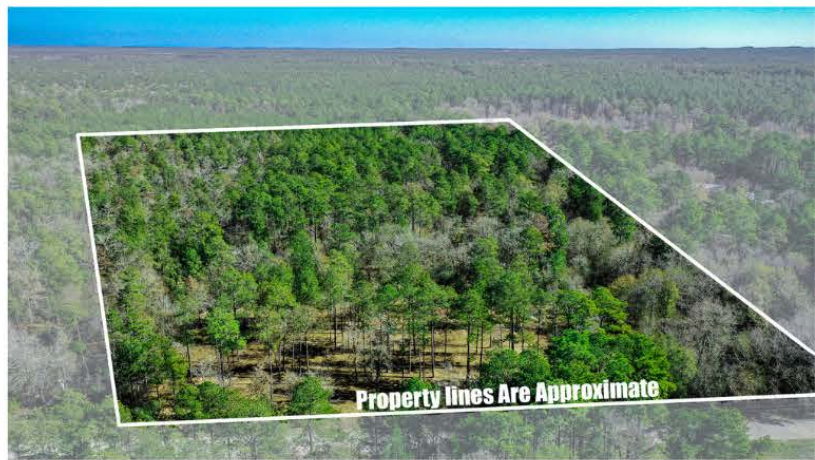




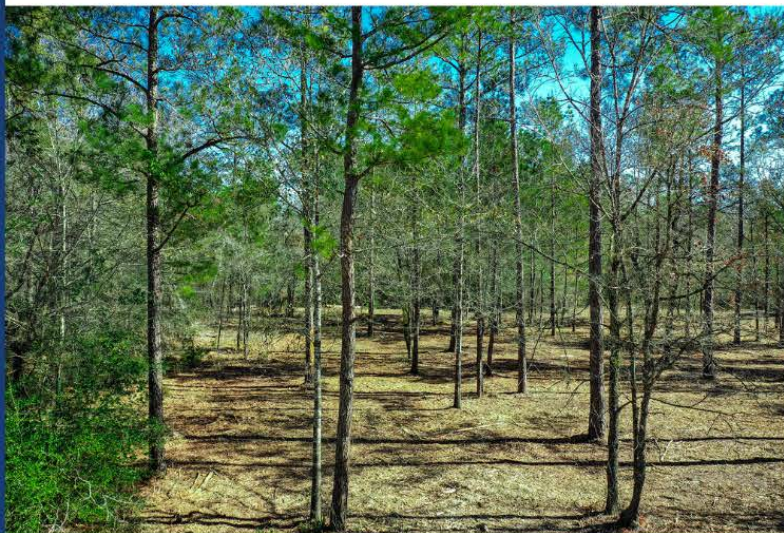
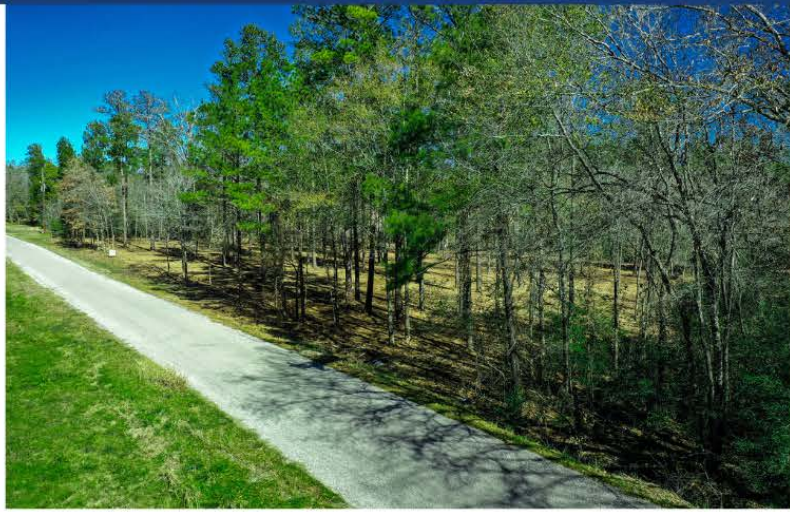
10 ACRES - 97 UTLEY RD  
HUNTSVILLE, TEXAS | 10 +/- ACRES

***Markham  
Realty***





# 10 ACRES - 97 UTLEY RD



10 pretty wooded acres northeast of Huntsville, fronting Utley Road. This rectangular shaped tract has approximately 398 feet of frontage on the county maintained road. A portion of the property has recently been underbrushed by a commercial service. A new fence has been constructed along the eastern boundary. Tree types vary to include all native hardwoods and pine. Elevations slope to the southeast corner. Water is available from Dodge/Oakhurst Supply Company. Located only minutes from Lake Livingston, Sam Houston National Forest, Huntsville and Conroe. An ideal setting for your country home. See attached restrictions.



Markham Realty  
Selling Quality Texas Properties Since 1970  
contact@markhamrealty.com  
936-295-5989 | markhamrealty.com



Scan here for additional  
information & photos.

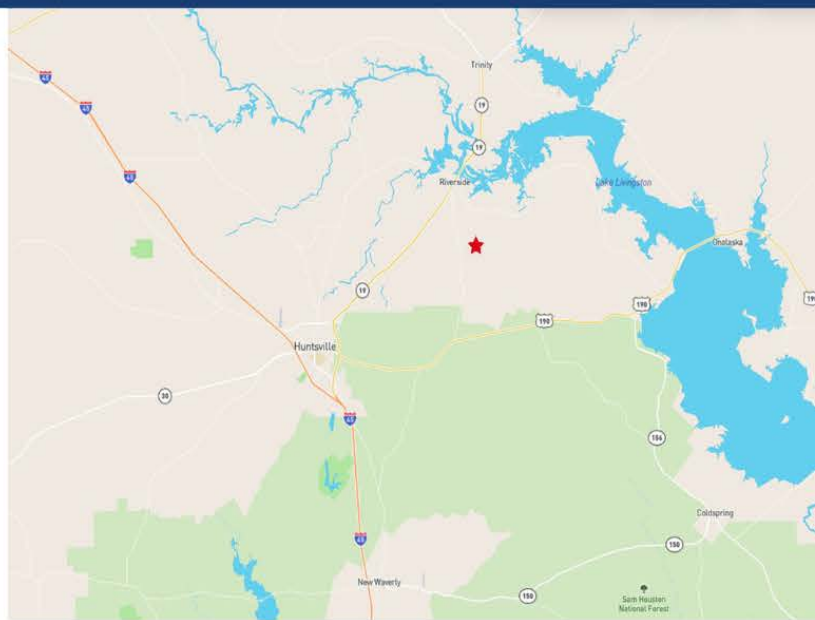
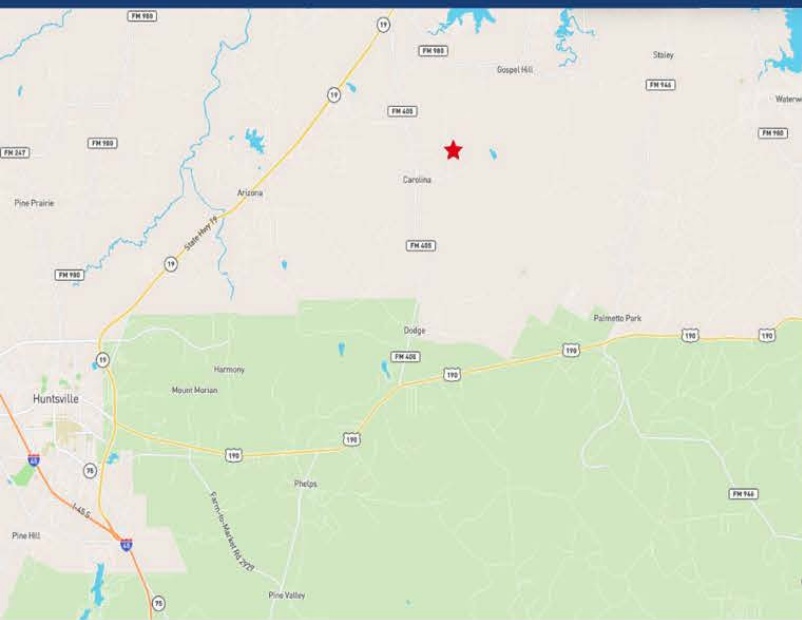


Information furnished is from sources deemed reliable, but is not guaranteed by Markham Realty, Inc. The offerings are subject to change in price, errors, omissions, prior sales, or withdrawal without notice. Square footage, acreage size and lot dimensions are approximate. All persons and firms named in this brochure are licensed brokers or salespersons. Markham Realty, Inc. will co-broker with any licensed Broker if Broker and/or agent accompanies his or her prospective buyer from the first (1st) showing forward.

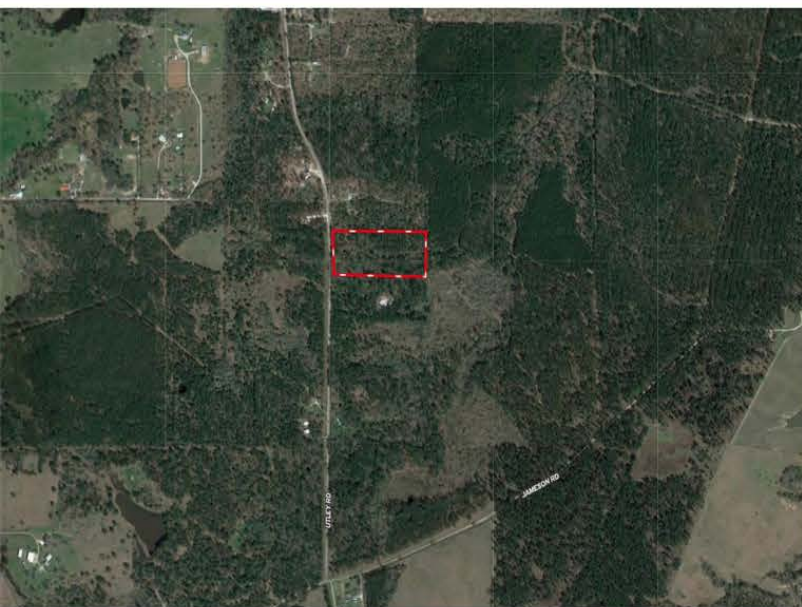


# 10 ACRES - 97 UTLEY RD HUNTSVILLE, TEXAS

***Markham  
Realty***



From the intersection of Highway 190 and FM 405, east of Huntsville, go north on FM 405 to Jameson Road, turn right and follow for 1 mile to Utley Road. Turn left and property will be approximately 1/4 mile on the right.



***Markham  
Realty***

Markham Realty  
Selling Quality Texas Properties Since 1970  
contact@markhamrealty.com  
936-295-5989 | markhamrealty.com



Scan here for additional  
information & photos.



Information furnished is from sources deemed reliable, but is not guaranteed by Markham Realty, Inc. The offerings are subject to change in price, errors, omissions, prior sales, or withdrawal without notice. Square footage, acreage size and lot dimensions are approximate. All persons and firms named in this brochure are licensed brokers or salespersons. Markham Realty, Inc. will co-broker with any licensed Broker if Broker and/or agent accompanies his or her prospective buyer from the first (1st) showing forward.