

Home on Acreage

Large Workshop

Decatur/Newton County/MS



\$550,000



JOSH WREN REALTOR®
O: 601.898.2772 | C: 601.497.9440
Josh@TomSmithLand.com

CHAD WILSON REALTOR®
O: 601.898.2772 | C: 601.750.1970
Chad@TomSmithLand.com

Expect More. Get More.

The Real Estate Experts You Can Trust!



TomSmithLandandHomes.com

Office: 601.898.2772

Property Information

Location:

- 2 miles North of Decatur

Property Use:

- Residential

Coordinates:

- 32.4783, -89.1147

Property Highlights

- 6.4± Acres
- 3,200± sq. ft
- 4 bedrooms/2.5 bathrooms
- 40'X60' Workshop with cedar cabinets and stained concrete floors
- Sunroom with outdoor kitchen
- 2 rental properties on site



JOSH WREN
REALTOR®

O: 601.898.2772 | C: 601.497.9440
Josh@TomSmithLand.com

CHAD WILSON
REALTOR®

O: 601.898.2772 | C: 601.750.1970
Chad@TomSmithLand.com

Expect More. Get More.

The Real Estate Experts You Can Trust!



TomSmithLandandHomes.com

Information is believed to be accurate but not guaranteed.

The Property

6.4± Acres

This 3,200± square foot house sits on 6.4± acres on Hwy 15, just two miles north of Decatur in Newton County, MS. When you turn into the property, you will instantly notice the beautiful oaks throughout. The home features four bedrooms with two and a half baths. The sunroom and custom outdoor kitchen has a gas grill, stove, custom wood cabinets, and a wood-burning stone fireplace! The property also features a two-car garage and a detached two-car carport, a 40'x60' shop with stained concrete floors, cedar cabinets, a full bath, and a tool room. There is also central heat and air, a tankless water heater, and Wi-fi. This property also features a private water well, meaning no more water bills. There are also two rental properties on the back of the property, bringing in around \$1,500 a month in income. All this could be yours just minutes from Decatur, MS! To schedule a private showing, call or text Josh or Chad!



JOSH WREN
REALTOR®

O: 601.898.2772 | C: 601.497.9440
Josh@TomSmithLand.com



CHAD WILSON
REALTOR®

O: 601.898.2772 | C: 601.750.1970
Chad@TomSmithLand.com

Expect More. Get More.

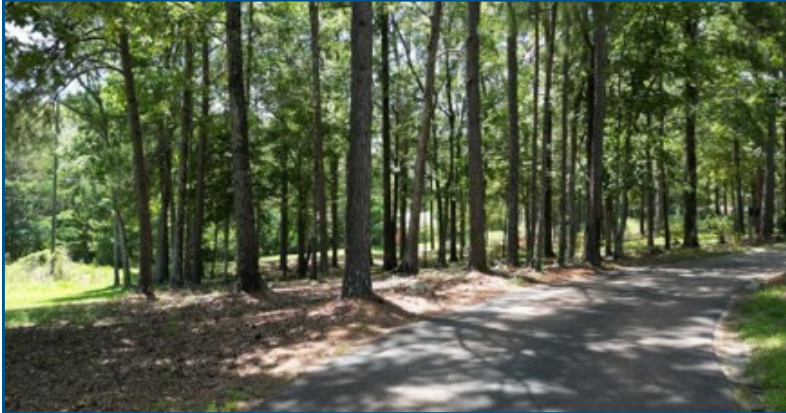
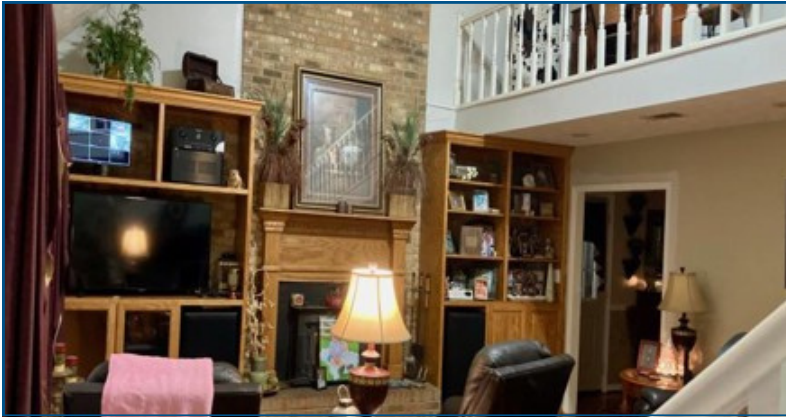
The Real Estate Experts You Can Trust!



TomSmithLandandHomes.com

Information is believed to be accurate but not guaranteed.

The Property



JOSH WREN

REALTOR®

O: 601.898.2772 | C: 601.497.9440

Josh@TomSmithLand.com



CHAD WILSON

REALTOR®

O: 601.898.2772 | C: 601.750.1970

Chad@TomSmithLand.com

Expect More. Get More.

The Real Estate Experts You Can Trust!

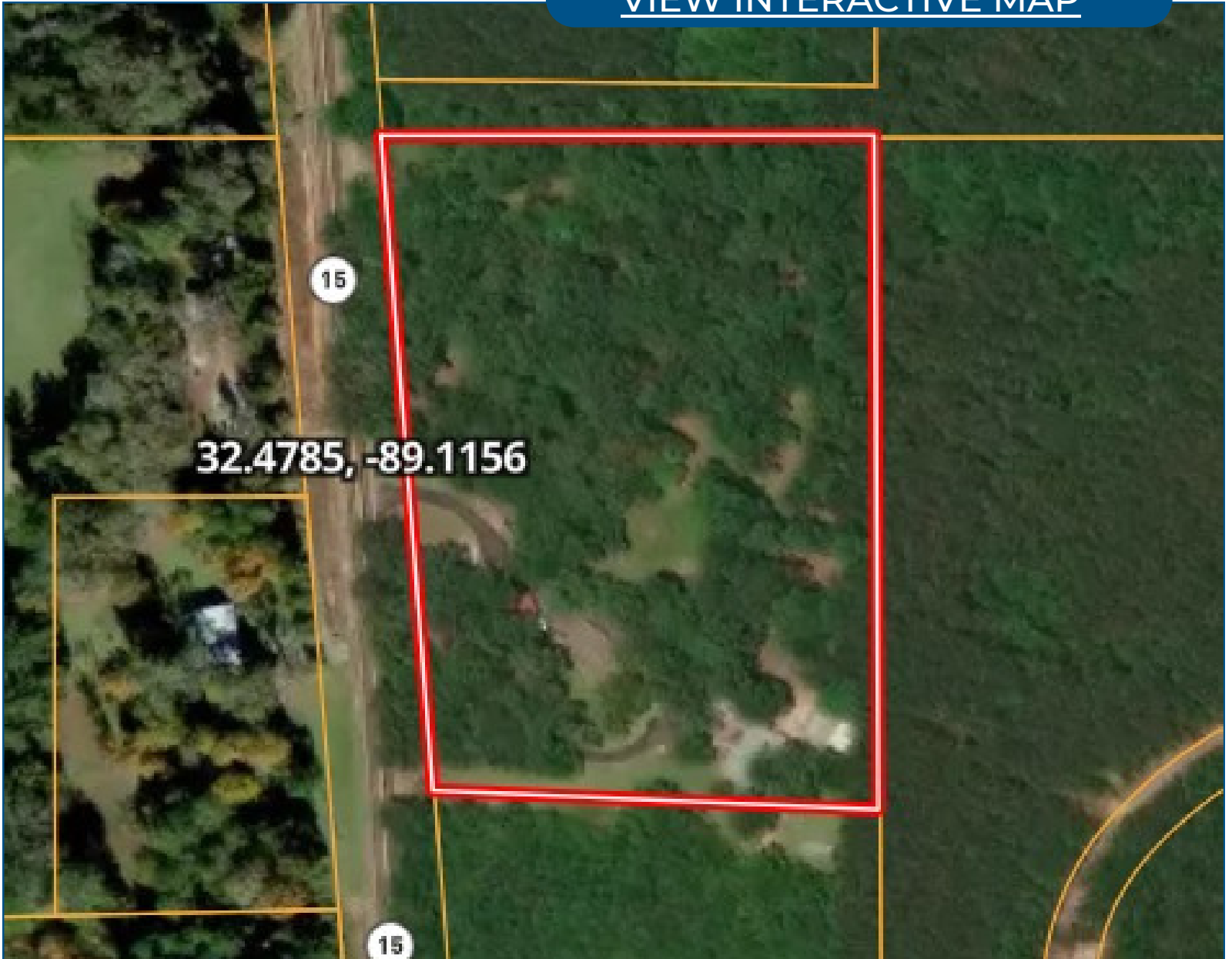
TomSmithLandandHomes.com

Information is believed to be accurate but not guaranteed.



Aerial Map

[VIEW INTERACTIVE MAP](#)



JOSH WREN

REALTOR®

O: 601.898.2772 | C: 601.497.9440

Josh@TomSmithLand.com



CHAD WILSON

REALTOR®

O: 601.898.2772 | C: 601.750.1970

Chad@TomSmithLand.com

Expect More. Get More.

The Real Estate Experts You Can Trust!

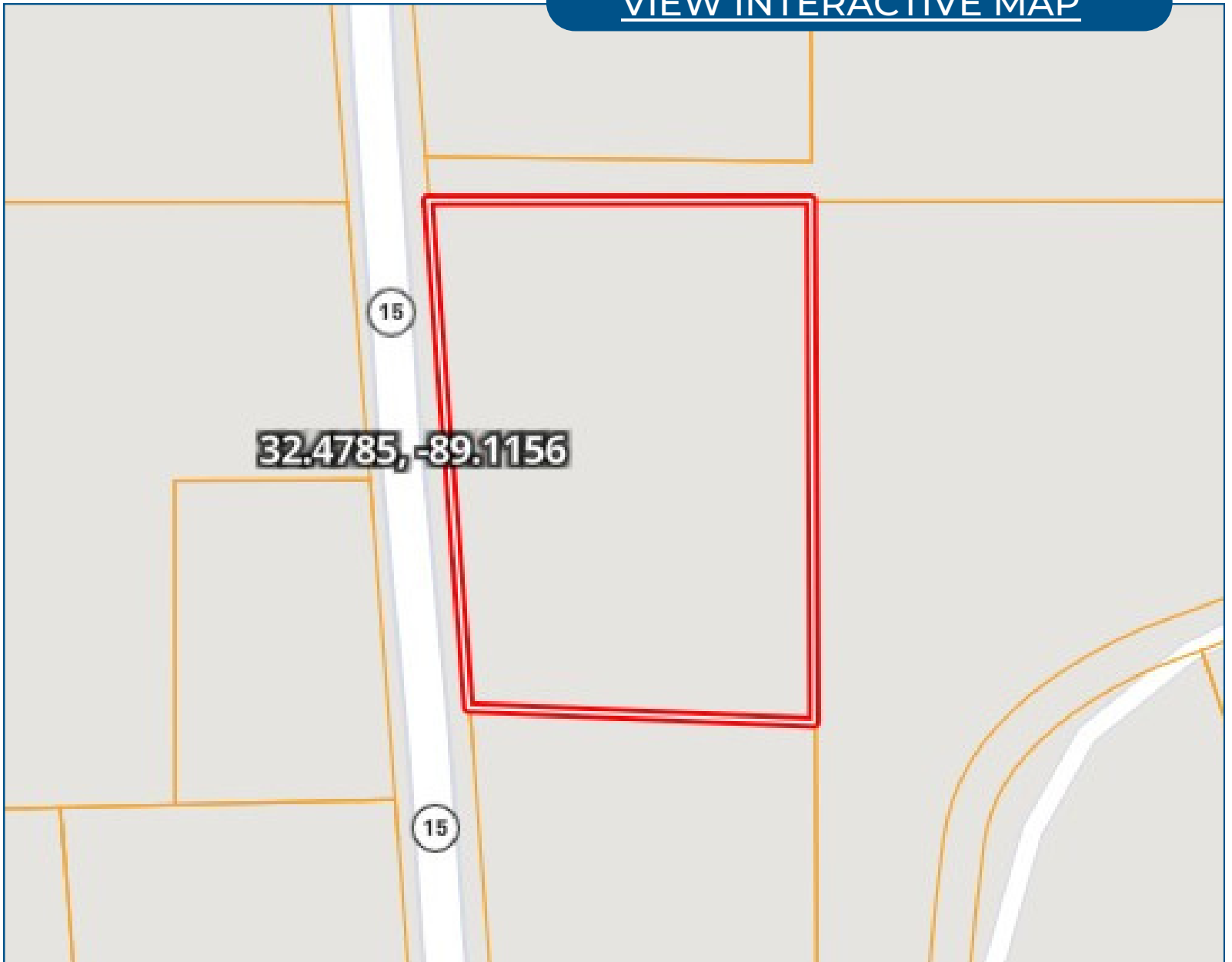
TomSmithLandandHomes.com

Information is believed to be accurate but not guaranteed.



Ownership Map

[VIEW INTERACTIVE MAP](#)



JOSH WREN

REALTOR®

O: 601.898.2772 | C: 601.497.9440

Josh@TomSmithLand.com



CHAD WILSON

REALTOR®

O: 601.898.2772 | C: 601.750.1970

Chad@TomSmithLand.com

Expect More. Get More.

The Real Estate Experts You Can Trust!

TomSmithLandandHomes.com

Information is believed to be accurate but not guaranteed.



Topo Map

[VIEW INTERACTIVE MAP](#)



JOSH WREN
REALTOR®

O: 601.898.2772 | C: 601.497.9440
Josh@TomSmithLand.com

CHAD WILSON
REALTOR®

O: 601.898.2772 | C: 601.750.1970
Chad@TomSmithLand.com

Expect More. Get More.

The Real Estate Experts You Can Trust!

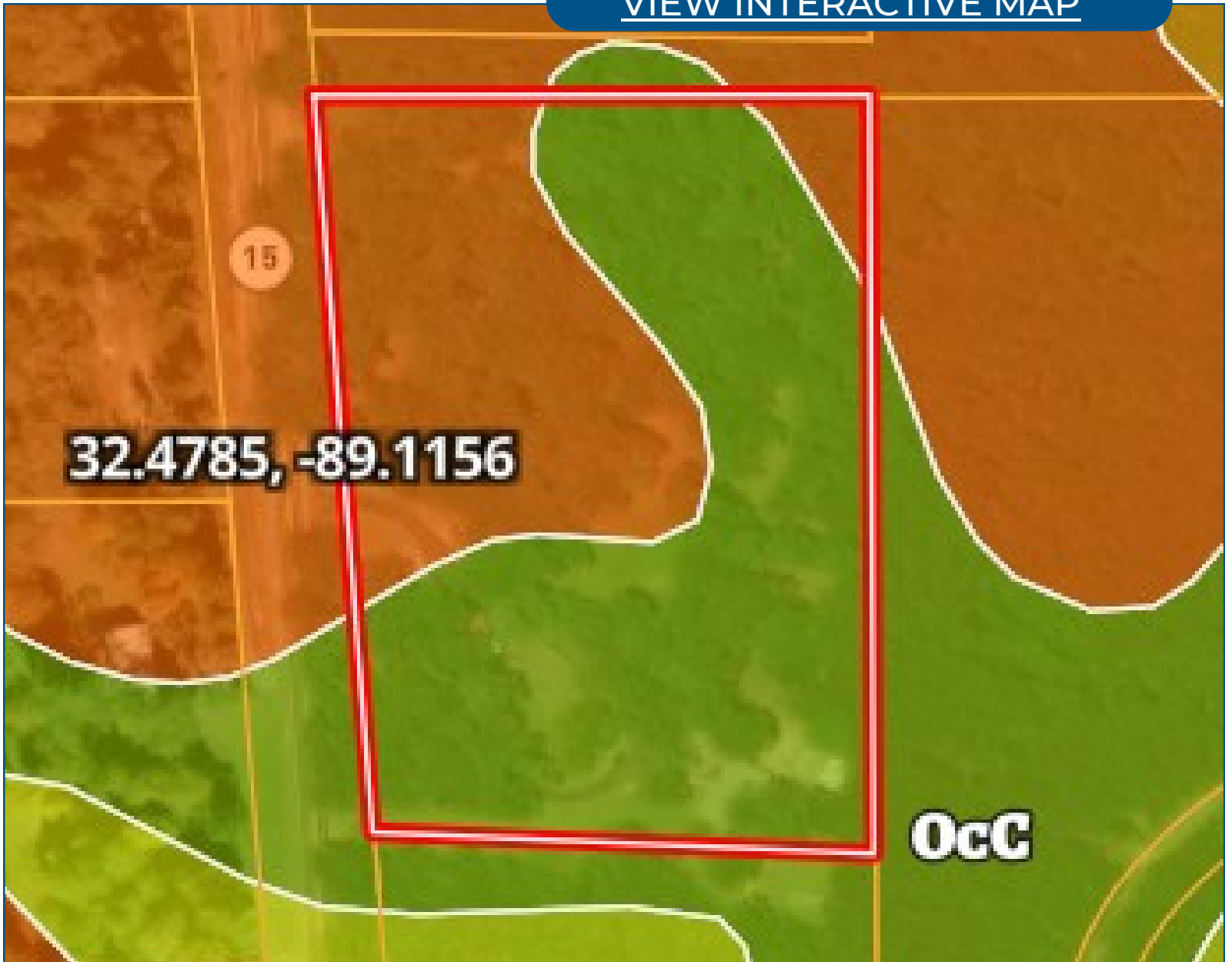


TomSmithLandandHomes.com

Information is believed to be accurate but not guaranteed.

Soil Map

[VIEW INTERACTIVE MAP](#)



JOSH WREN

REALTOR®

O: 601.898.2772 | C: 601.497.9440

Josh@TomSmithLand.com

CHAD WILSON

REALTOR®

O: 601.898.2772 | C: 601.750.1970

Chad@TomSmithLand.com

Expect More. Get More.

The Real Estate Experts You Can Trust!

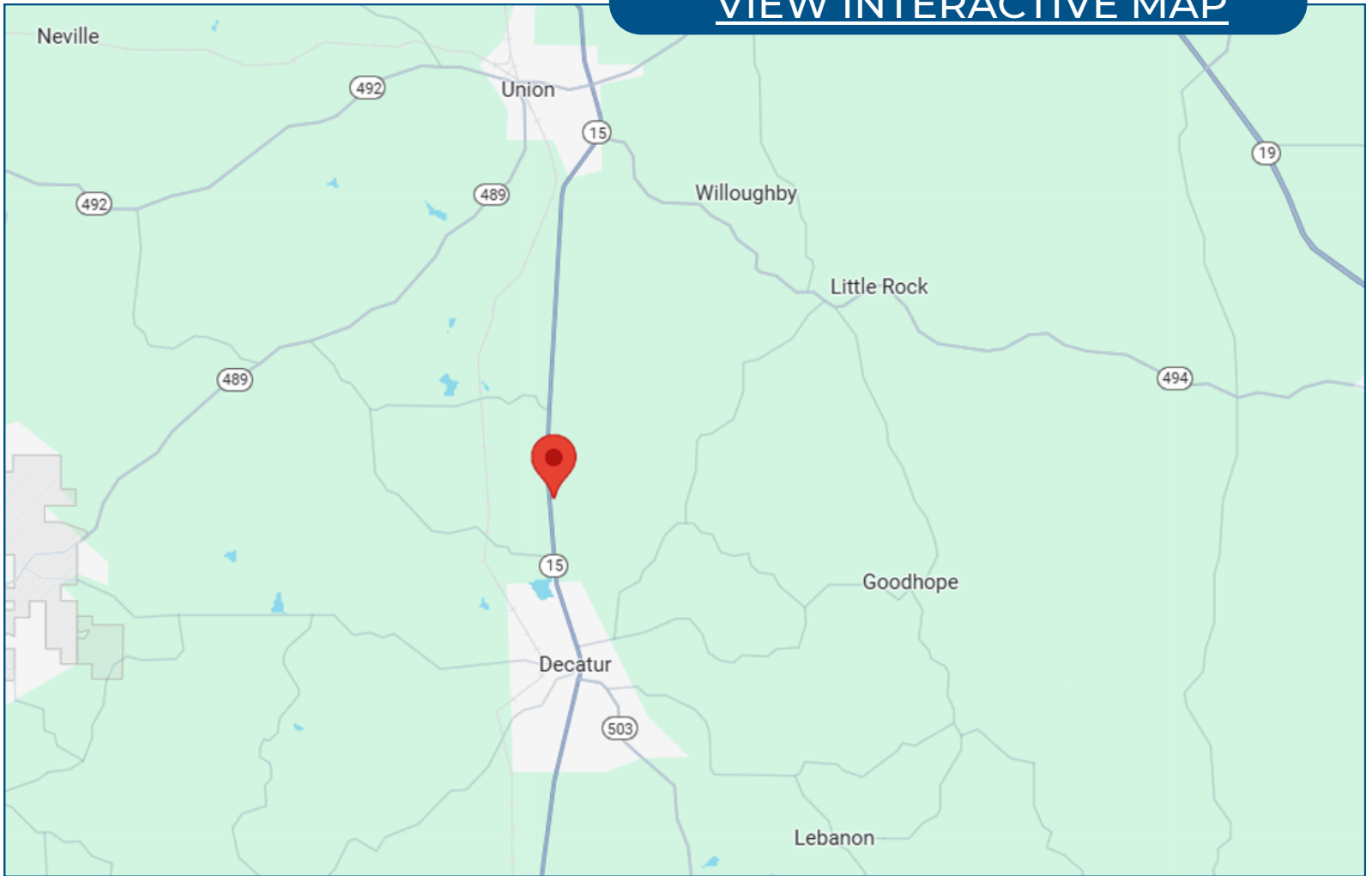
TomSmithLandandHomes.com

Information is believed to be accurate but not guaranteed.



Directional Map

[VIEW INTERACTIVE MAP](#)



Directions from Decatur, MS:

Travel Hwy MS-15 North for 2.8 miles. The house will be on your right.



JOSH WREN
REALTOR®

O: 601.898.2772 | C: 601.497.9440
Josh@TomSmithLand.com

CHAD WILSON
REALTOR®

O: 601.898.2772 | C: 601.750.1970
Chad@TomSmithLand.com

Expect More. Get More.

The Real Estate Experts You Can Trust!

TomSmithLandandHomes.com

Information is believed to be accurate but not guaranteed.

