

Prime Timber Tract

45.8± ACRES

Pelahatchie, MS-Rankin County



PotlatchDeltic

Preferred
BROKER

\$548,900



Expect More. Get More.

TomSmithLandandHomes.com

Office: 601.898.2772

Property Information

Location:

- Pelahatchie, MS

Coordinates:

- 32.4095, -89.7522

Property Use:

- Farming, Hunting, Recreational, Timber

Property Highlights

- 45.8± Acres
- Rankin County School District-Pisgah Zone
- Water and electricity available at the road
- Impressive amount of road frontage
- Excellent visibility and easy access
- Diverse mix of pine and mature hardwood



DAVID BELDEN ASSOCIATE BROKER, ALC®
O: 601.898.2772 | C: 601.415.3884
DBelden@TomSmithLand.com



DALE WILDS REALTOR®
O: 601.898.2772 | C: 662.715.7109
Dale@TomSmithLand.com

Expect More. Get More.

The Real Estate Experts You Can Trust!



TomSmithLandandHomes.com

Information is believed to be accurate but not guaranteed.

Prime Timber Tract

45.8± Acres

Look at this prime timber tract for sale in Rankin County, offering an exceptional opportunity for investment or development. Situated in the highly coveted Pisgah School District, this 45.8± acre property boasts a range of desirable features that make it an attractive prospect for various purposes. With water and electric utilities available on the road, this tract provides convenience and accessibility for potential buyers. This timber tract boasts an impressive amount of paved road frontage. The property offers excellent visibility and easy access, enhancing its appeal for development opportunities. The property comprises a diverse mix of planted pine stands. It features approximately 24± acres of 3-year-old pines, 15.4± acres of 21-year-old pines, and 6± acres of mature hardwood pine mix.



DAVID BELDEN
ASSOCIATE BROKER, ALC®
O: 601.898.2772 | C: 601.415.3884
DBelden@TomSmithLand.com

DALE WILDS
REALTOR®
O: 601.898.2772 | C: 662.715.7109
Dale@TomSmithLand.com

Expect More. Get More.

The Real Estate Experts You Can Trust!



TomSmithLandandHomes.com

Information is believed to be accurate but not guaranteed.



DAVID BELDEN
 ASSOCIATE BROKER, ALC®
 O: 601.898.2772 | C: 601.415.3884
 DBelden@TomSmithLand.com

DALE WILDS
 REALTOR®
 O: 601.898.2772 | C: 662.715.7109
 Dale@TomSmithLand.com

Expect More. Get More.

The Real Estate Experts You Can Trust!



TomSmithLandandHomes.com

Information is believed to be accurate but not guaranteed.



DAVID BELDEN
 ASSOCIATE BROKER, ALC®
 O: 601.898.2772 | C: 601.415.3884
 DBelden@TomSmithLand.com

DALE WILDS
 REALTOR®
 O: 601.898.2772 | C: 662.715.7109
 Dale@TomSmithLand.com

Expect More. Get More.

The Real Estate Experts You Can Trust!



TomSmithLandandHomes.com

Information is believed to be accurate but not guaranteed.

Aerial Map

VIEW INTERACTIVE MAP →



DAVID BELDEN
ASSOCIATE BROKER, ALC®
O: 601.898.2772 | C: 601.415.3884
DBelden@TomSmithLand.com

DALE WILDS
REALTOR®
O: 601.898.2772 | C: 662.715.7109
Dale@TomSmithLand.com

Expect More. Get More.

The Real Estate Experts You Can Trust!

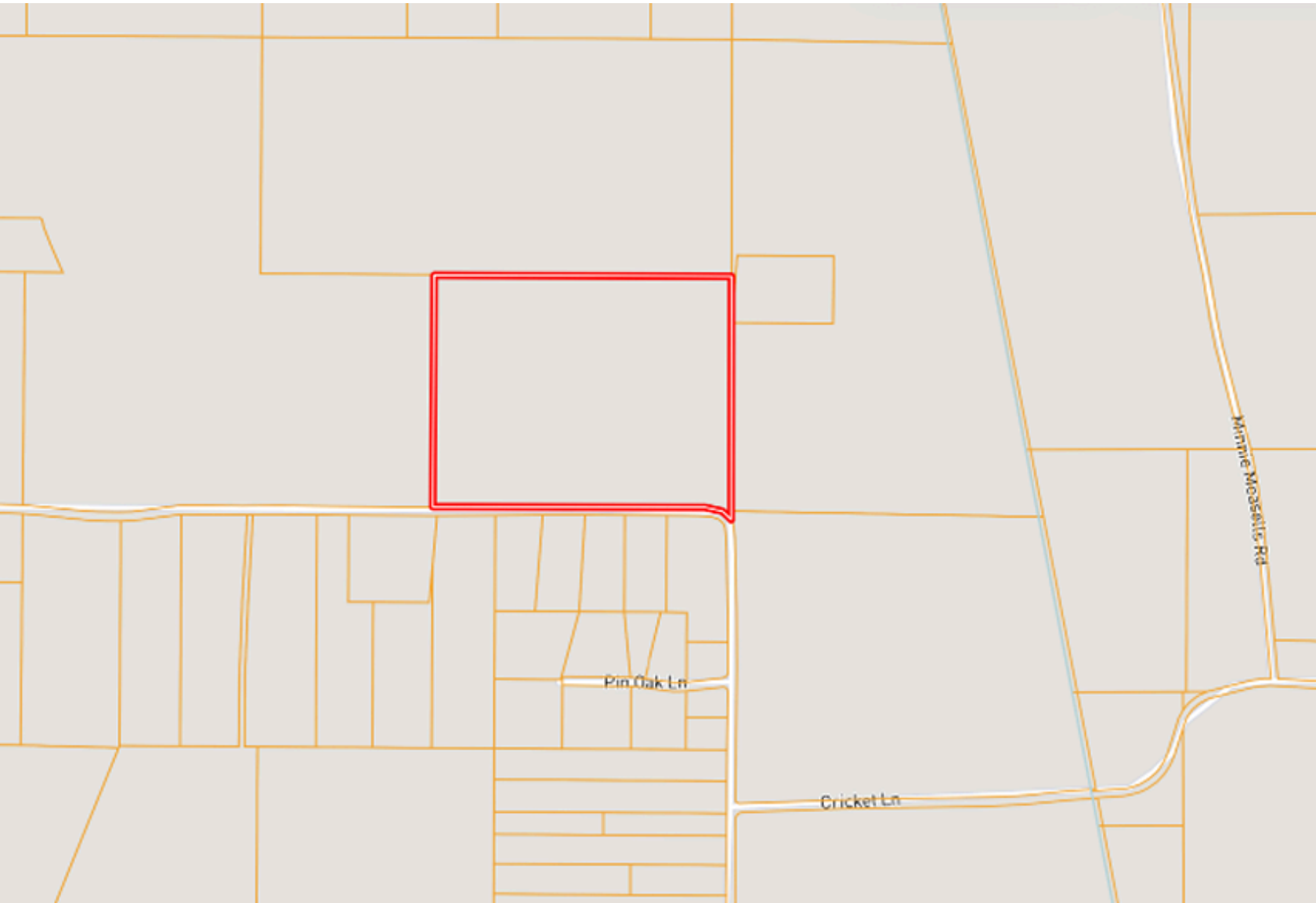


TomSmithLandandHomes.com

Information is believed to be accurate but not guaranteed.

Ownership Map

[VIEW INTERACTIVE MAP](#) →



DAVID BELDEN
ASSOCIATE BROKER, ALC®
O: 601.898.2772 | C: 601.415.3884
DBelden@TomSmithLand.com

DALE WILDS
REALTOR®
O: 601.898.2772 | C: 662.715.7109
Dale@TomSmithLand.com

Expect More. Get More.

The Real Estate Experts You Can Trust!

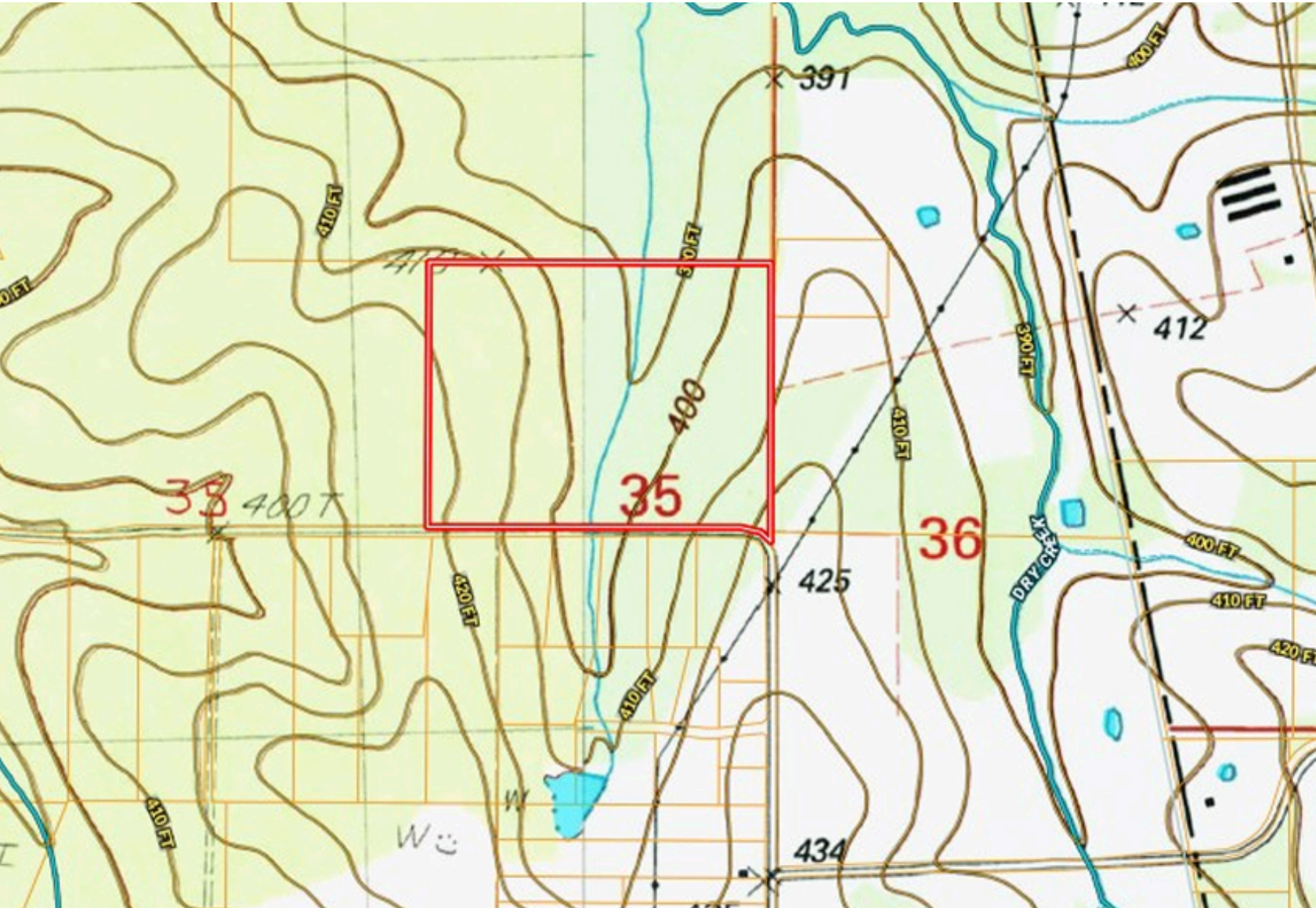


TomSmithLandandHomes.com

Information is believed to be accurate but not guaranteed.

Topo Map

VIEW INTERACTIVE MAP →



DAVID BELDEN
ASSOCIATE BROKER, ALC®
O: 601.898.2772 | C: 601.415.3884
DBelden@TomSmithLand.com

DALE WILDS
REALTOR®
O: 601.898.2772 | C: 662.715.7109
Dale@TomSmithLand.com

Expect More. Get More.

The Real Estate Experts You Can Trust!

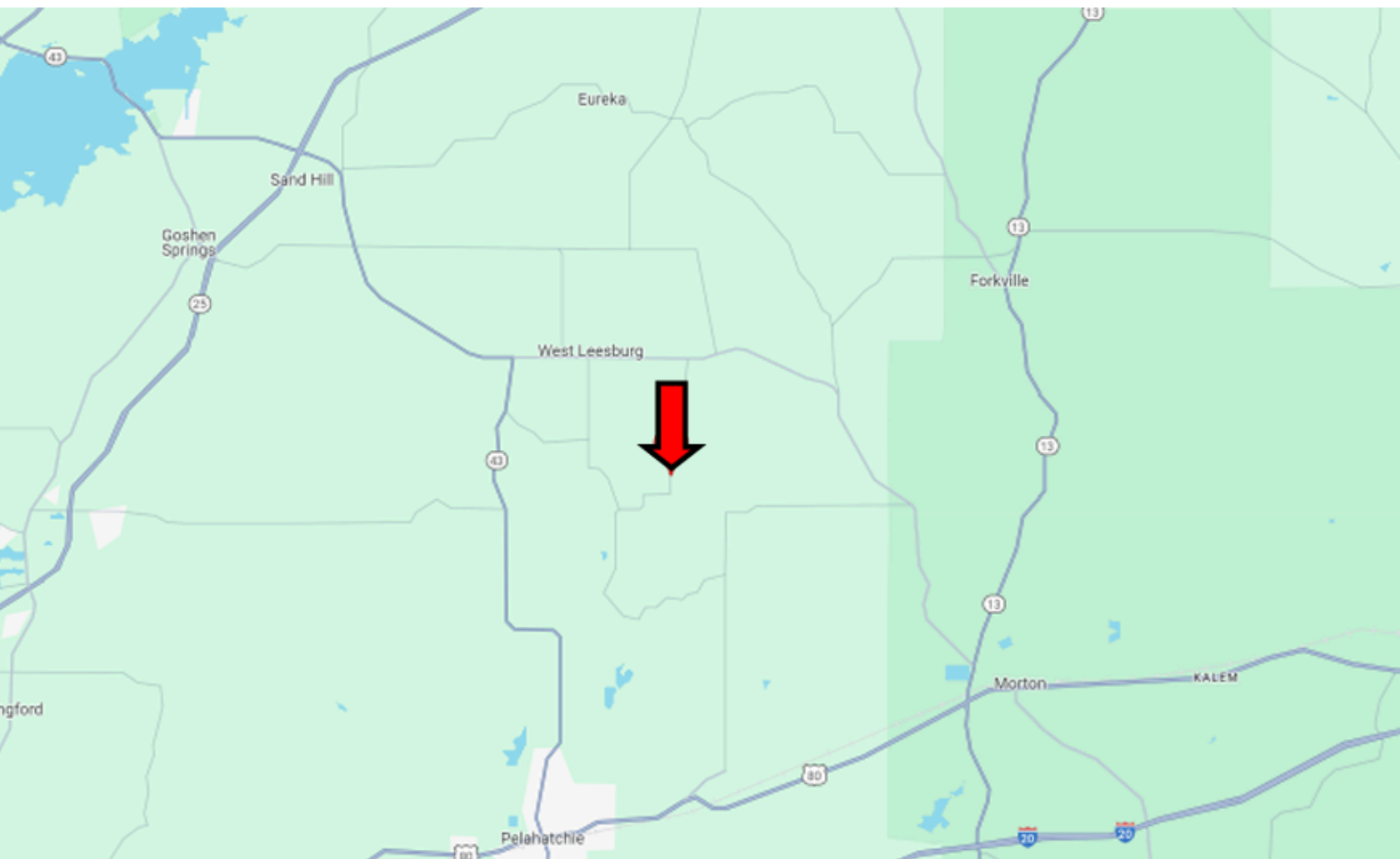
TomSmithLandandHomes.com

Information is believed to be accurate but not guaranteed.



Directional Map

[VIEW INTERACTIVE MAP](#)



DIRECTIONS FROM HWY 80 AND HWY 43 IN PELAHATCHIE MS: Travel Hwy 80 for 2.7 miles. Turn left onto Old Hwy 80 and travel 1 mile. Turn left onto Barker Rd. After 5.3 miles, the property will be on the right.



DAVID BELDEN
ASSOCIATE BROKER, ALC®
O: 601.898.2772 | C: 601.415.3884
DBelden@TomSmithLand.com

DALE WILDS
REALTOR®
O: 601.898.2772 | C: 662.715.7109
Dale@TomSmithLand.com

Expect More. Get More.

The Real Estate Experts You Can Trust!



TomSmithLandandHomes.com

Information is believed to be accurate but not guaranteed.