

Recreational or Development Property

42.7 ± ACRES

LAFAYETTE COUNTY, MS



PotlatchDeltic[®] | Preferred
BROKER

\$323,850



Expect More. Get More.

TomSmithLandandHomes.com

Office: 601.898.2772

Property Information

Location:

- Oxford, MS

Coordinates:

- 34°19'35.4"N 89°37'46.2"W

Property Use:

- Agricultural, Cattle, Development, Farm, Hunting, Residential, Timber

Property Highlights

- 42.7 ± Acres
- Located just 7.9 miles away from Vaught-Hemingway Stadium
- Ample recreational potential
- Outstanding hunting potential
- Utilities available



DAVID BELDEN ASSOCIATE BROKER, ALC®
O: 601.898.2772 | C: 601.415.3884
DBelden@TomSmithLand.com



DALE WILDS REALTOR®
O: 601.898.2772 | C: 662.715.7109
Dale@TomSmithLand.com

Expect More. Get More.

The Real Estate Experts You Can Trust!



TomSmithLandandHomes.com

Information is believed to be accurate but not guaranteed.

Recreational or Development Property

42.7 ± ACRES

Are you searching for a profitable investment opportunity in Lafayette County, MS? Look no further than this impressive 42.7± acre parcel of land just outside Oxford, Mississippi. Located just 7.9 miles from Vaught-Hemingway Stadium, this prime property is the perfect canvas for investors and developers seeking to make the most of its exceptional location. This land has ample recreational potential, offering hiking trails, horseback riding, and outstanding hunting opportunities. It is an ideal prospect for those with a vision. With utilities readily available, real estate developers will also find it an attractive investment. This investment opportunity is a must-have.



DAVID BELDEN
ASSOCIATE BROKER, ALC®
O: 601.898.2772 | C: 601.415.3884
DBelden@TomSmithLand.com

DALE WILDS
REALTOR®
O: 601.898.2772 | C: 662.715.7109
Dale@TomSmithLand.com

Expect More. Get More.

The Real Estate Experts You Can Trust!



TomSmithLandandHomes.com

Information is believed to be accurate but not guaranteed.



DAVID BELDEN
ASSOCIATE BROKER, ALC®
O: 601.898.2772 | C: 601.415.3884
DBelden@TomSmithLand.com

DALE WILDS
REALTOR®
O: 601.898.2772 | C: 662.715.7109
Dale@TomSmithLand.com

Expect More. Get More.

The Real Estate Experts You Can Trust!



TomSmithLandandHomes.com

Information is believed to be accurate but not guaranteed.



DAVID BELDEN
ASSOCIATE BROKER, ALC®
O: 601.898.2772 | C: 601.415.3884
DBelden@TomSmithLand.com

DALE WILDS
REALTOR®
O: 601.898.2772 | C: 662.715.7109
Dale@TomSmithLand.com

Expect More. Get More.

The Real Estate Experts You Can Trust!



TomSmithLandandHomes.com

Information is believed to be accurate but not guaranteed.

Aerial Map

VIEW INTERACTIVE MAP →



DAVID BELDEN
ASSOCIATE BROKER, ALC®
O: 601.898.2772 | C: 601.415.3884
DBelden@TomSmithLand.com



DALE WILDS
REALTOR®
O: 601.898.2772 | C: 662.715.7109
Dale@TomSmithLand.com

Expect More. Get More.

The Real Estate Experts You Can Trust!

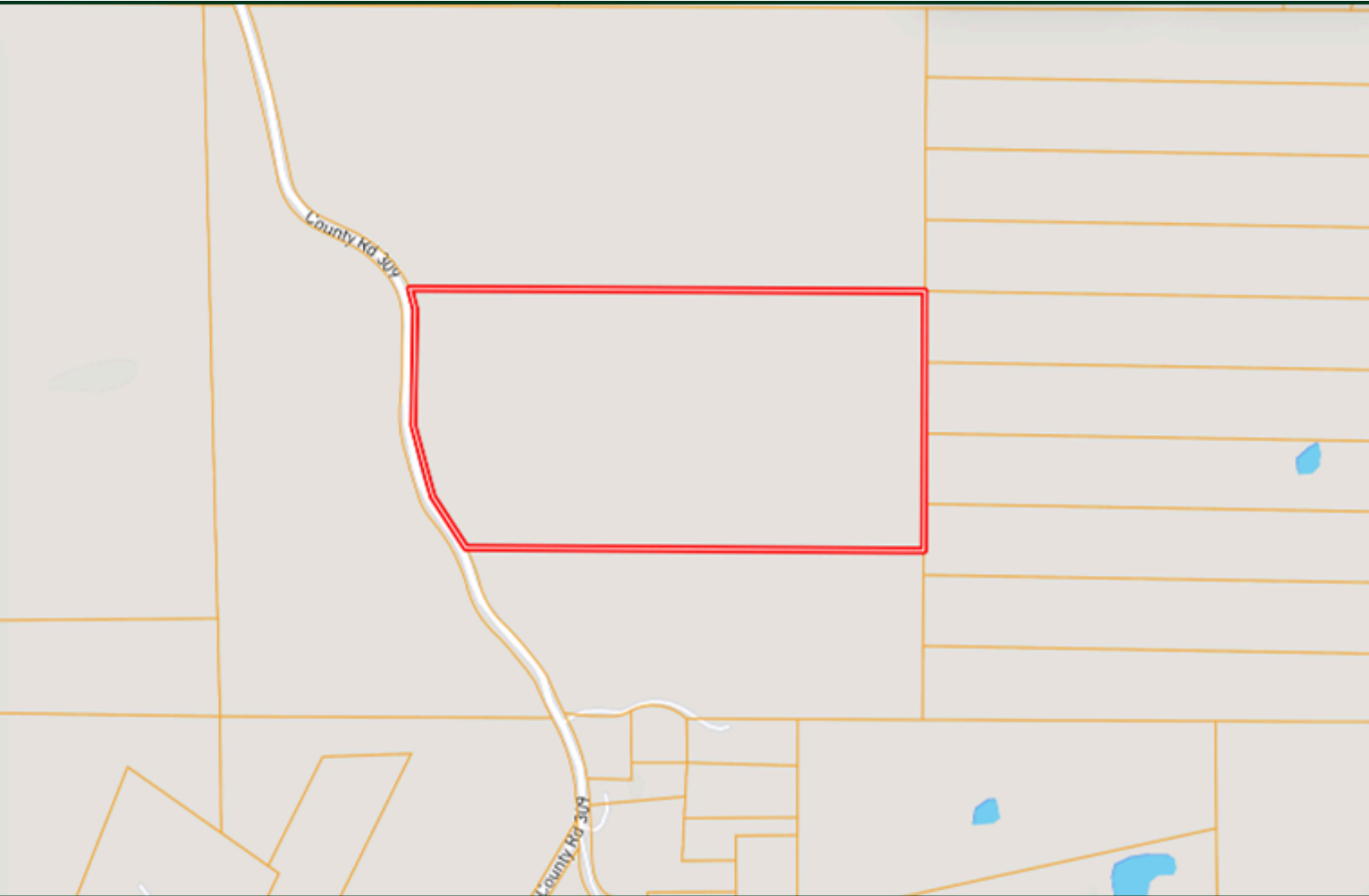


TomSmithLandandHomes.com

Information is believed to be accurate but not guaranteed.

Ownership Map

[VIEW INTERACTIVE MAP](#) →



DAVID BELDEN
ASSOCIATE BROKER, ALC®
O: 601.898.2772 | C: 601.415.3884
DBelden@TomSmithLand.com



DALE WILDS
REALTOR®
O: 601.898.2772 | C: 662.715.7109
Dale@TomSmithLand.com

Expect More. Get More.

The Real Estate Experts You Can Trust!

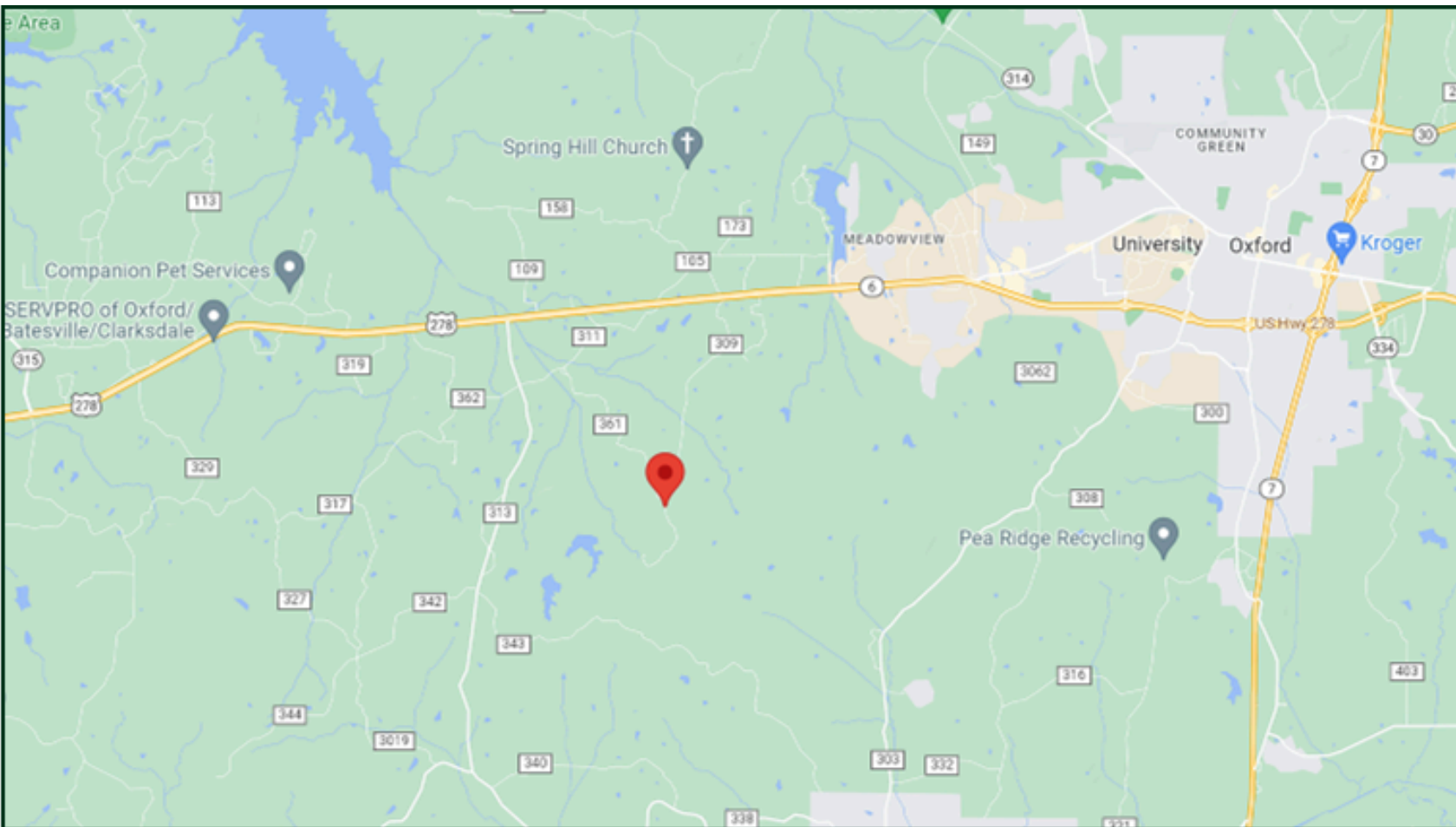


TomSmithLandandHomes.com

Information is believed to be accurate but not guaranteed.

Directional Map

[VIEW INTERACTIVE MAP](#)



From Highway 6 and Jackson Avenue in Oxford, MS: Travel Hwy 6 West for 2.7 miles. Turn left onto CR 309. After 2.8 miles, the property will be on your left.



DAVID BELDEN
ASSOCIATE BROKER, ALC®
O: 601.898.2772 | C: 601.415.3884
DBelden@TomSmithLand.com

DALE WILDS
REALTOR®
O: 601.898.2772 | C: 662.715.7109
Dale@TomSmithLand.com

Expect More. Get More.

The Real Estate Experts You Can Trust!

TomSmithLandandHomes.com

Information is believed to be accurate but not guaranteed.

