

Recreational or Development Property

25.3± ACRES

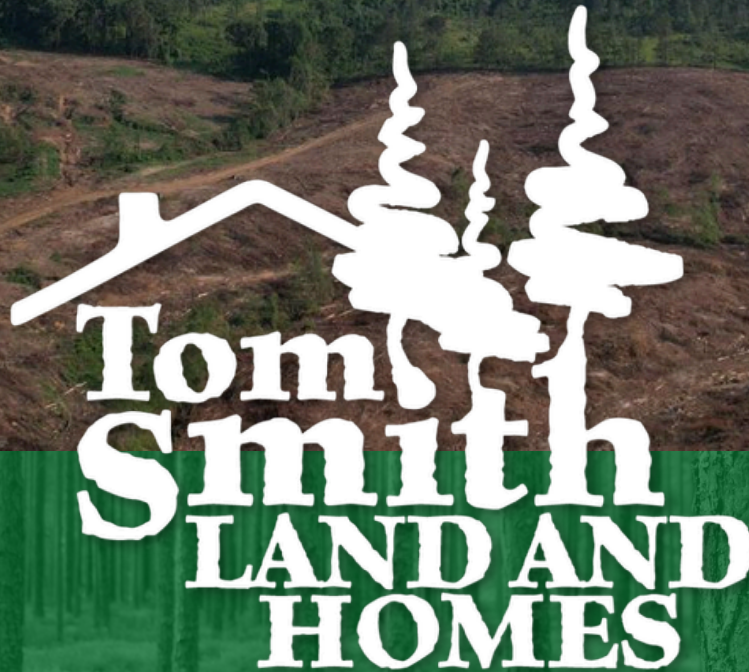
LAFAYETTE COUNTY, MS



PotlatchDeltic

Preferred
BROKER

\$275,150



Expect More. Get More.

TomSmithLandandHomes.com

Office: 601.898.2772

Property Information

Location:

- Oxford, MS

Coordinates:

- 34.3225, -89.6277

Property Use:

- Agriculture, Cattle, Farming Development, Hunting, Residential, Timber

Property Highlights

- 25.3± Acres
- Profitable investment opportunity
- 7.9 miles from Vaught-Hemingway Stadium/Ole Miss
- Recreational Opportunity
- Offers hiking trails, horseback riding, and hunting opportunities
- Utilities available



DAVID BELDEN ASSOCIATE BROKER, ALC®
O: 601.898.2772 | C: 601.415.3884
DBelden@TomSmithLand.com



DALE WILDS REALTOR®
O: 601.898.2772 | C: 662.715.7109
Dale@TomSmithLand.com

Expect More. Get More.

The Real Estate Experts You Can Trust!



TomSmithLandandHomes.com

Information is believed to be accurate but not guaranteed.

Recreational or Development Property

25.3± ACRES

Are you searching for a profitable investment opportunity in Lafayette County, MS? Look no further than this impressive 25.3± acre parcel of land just outside Oxford, Mississippi. Located just 7.9 miles from Vaught-Hemingway Stadium, this prime property is the perfect canvas for investors and developers seeking to make the most of its exceptional location. This land has ample recreational potential, offering hiking trails, horseback riding, and outstanding hunting opportunities. It is an ideal prospect for those with a vision. With utilities readily available, real estate developers will also find it an attractive investment. This investment opportunity is a must-have.



DAVID BELDEN
ASSOCIATE BROKER, ALC®
O: 601.898.2772 | C: 601.415.3884
DBelden@TomSmithLand.com

DALE WILDS
REALTOR®
O: 601.898.2772 | C: 662.715.7109
Dale@TomSmithLand.com

Expect More. Get More.

The Real Estate Experts You Can Trust!



TomSmithLandandHomes.com

Information is believed to be accurate but not guaranteed.



DAVID BELDEN
ASSOCIATE BROKER, ALC®
O: 601.898.2772 | C: 601.415.3884
DBelden@TomSmithLand.com

DALE WILDS
REALTOR®
O: 601.898.2772 | C: 662.715.7109
Dale@TomSmithLand.com

Expect More. Get More.

The Real Estate Experts You Can Trust!



TomSmithLandandHomes.com

Information is believed to be accurate but not guaranteed.



DAVID BELDEN
 ASSOCIATE BROKER, ALC®
 O: 601.898.2772 | C: 601.415.3884
 DBelden@TomSmithLand.com

DALE WILDS
 REALTOR®
 O: 601.898.2772 | C: 662.715.7109
 Dale@TomSmithLand.com

Expect More. Get More.

The Real Estate Experts You Can Trust!



TomSmithLandandHomes.com

Information is believed to be accurate but not guaranteed.

Aerial Map

VIEW INTERACTIVE MAP



DAVID BELDEN
ASSOCIATE BROKER, ALC®
O: 601.898.2772 | C: 601.415.3884
DBelden@TomSmithLand.com



DALE WILDS
REALTOR®
O: 601.898.2772 | C: 662.715.7109
Dale@TomSmithLand.com

Expect More. Get More.

The Real Estate Experts You Can Trust!

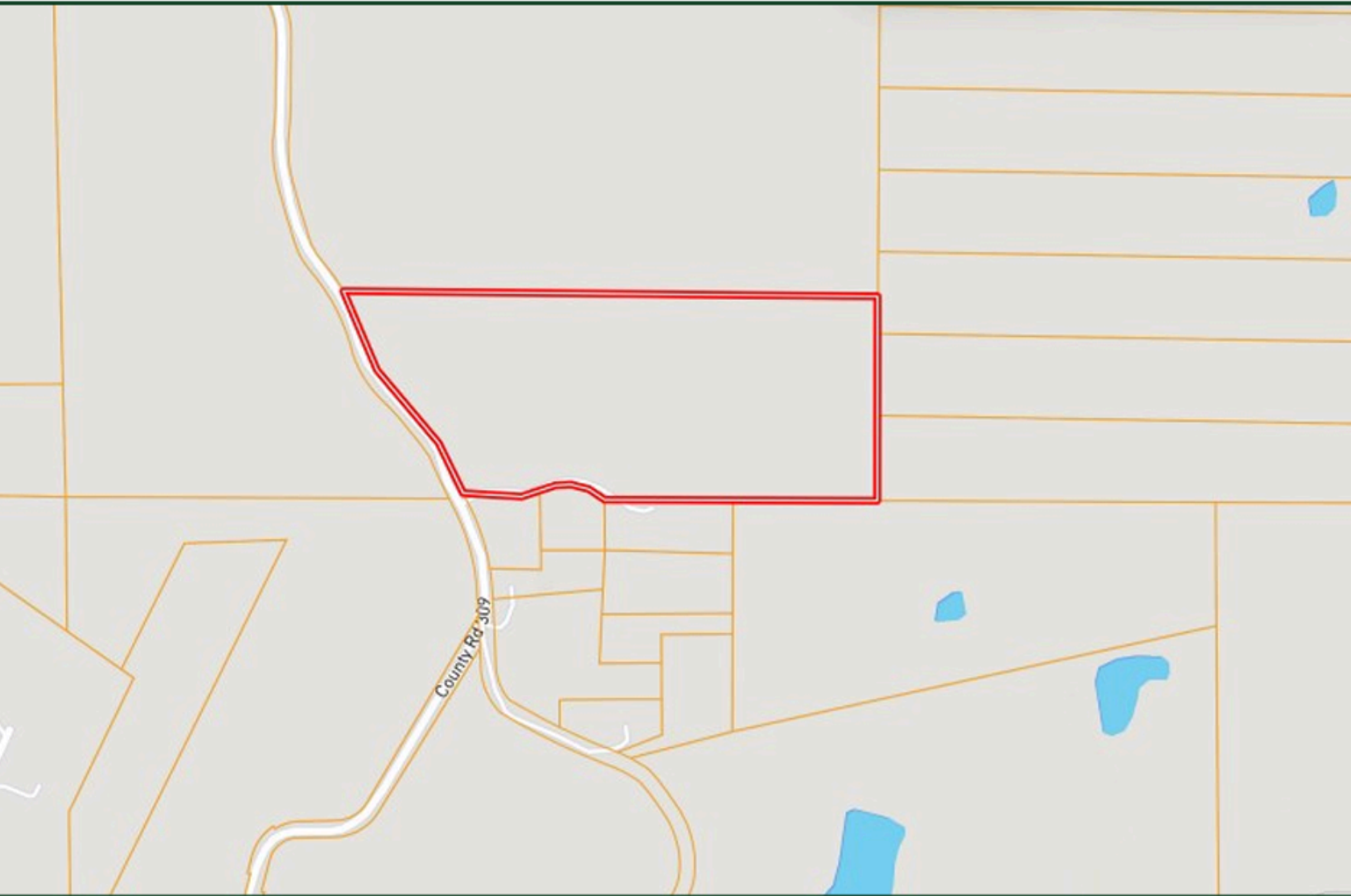


TomSmithLandandHomes.com

Information is believed to be accurate but not guaranteed.

Ownership Map

VIEW INTERACTIVE MAP →



DAVID BELDEN
ASSOCIATE BROKER, ALC®
O: 601.898.2772 | C: 601.415.3884
DBelden@TomSmithLand.com



DALE WILDS
REALTOR®
O: 601.898.2772 | C: 662.715.7109
Dale@TomSmithLand.com

Expect More. Get More.

The Real Estate Experts You Can Trust!

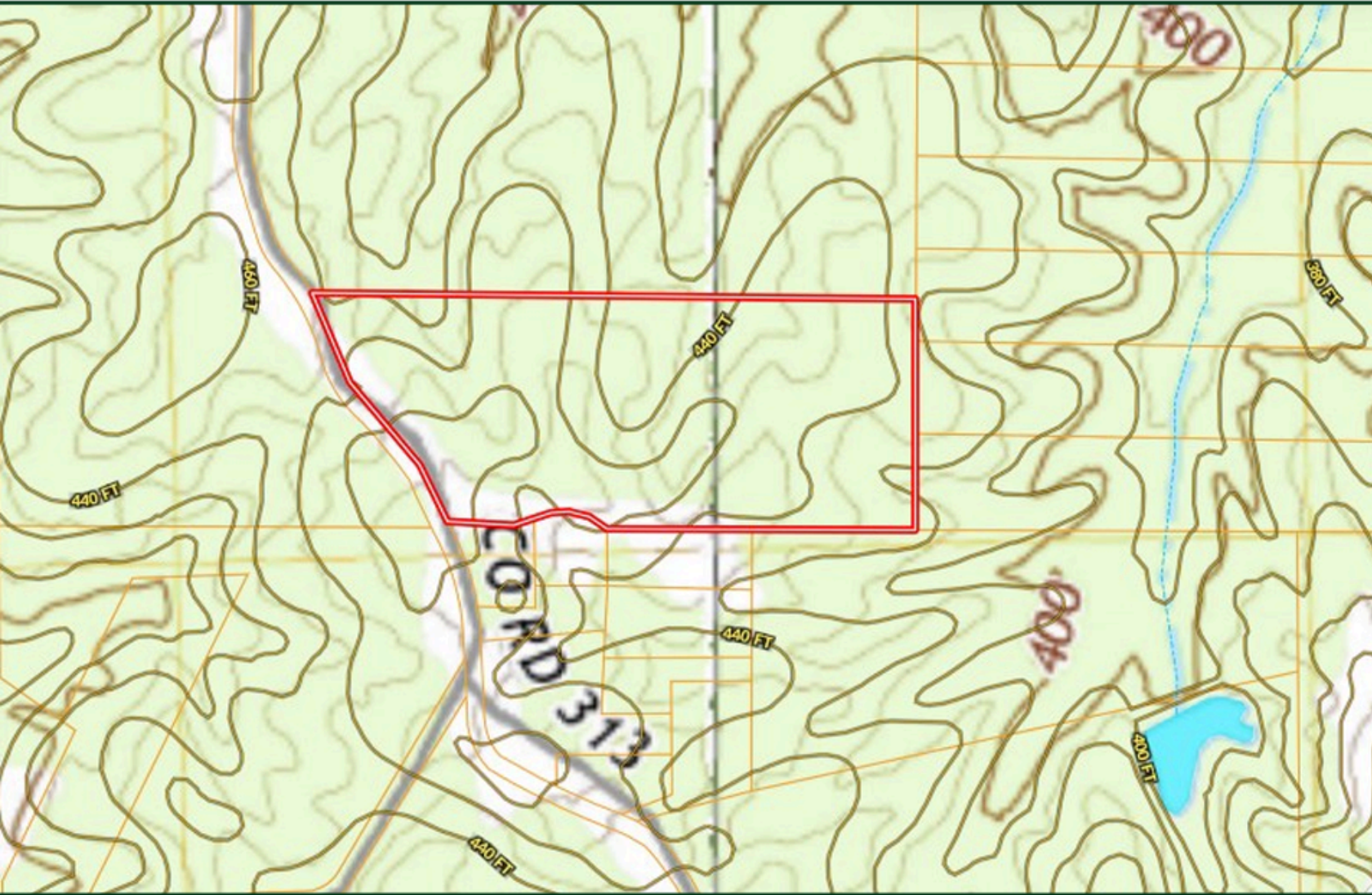


TomSmithLandandHomes.com

Information is believed to be accurate but not guaranteed.

Topo Map

VIEW INTERACTIVE MAP →



DAVID BELDEN
ASSOCIATE BROKER, ALC®
O: 601.898.2772 | C: 601.415.3884
DBelden@TomSmithLand.com

DALE WILDS
REALTOR®
O: 601.898.2772 | C: 662.715.7109
Dale@TomSmithLand.com

Expect More. Get More.

The Real Estate Experts You Can Trust!

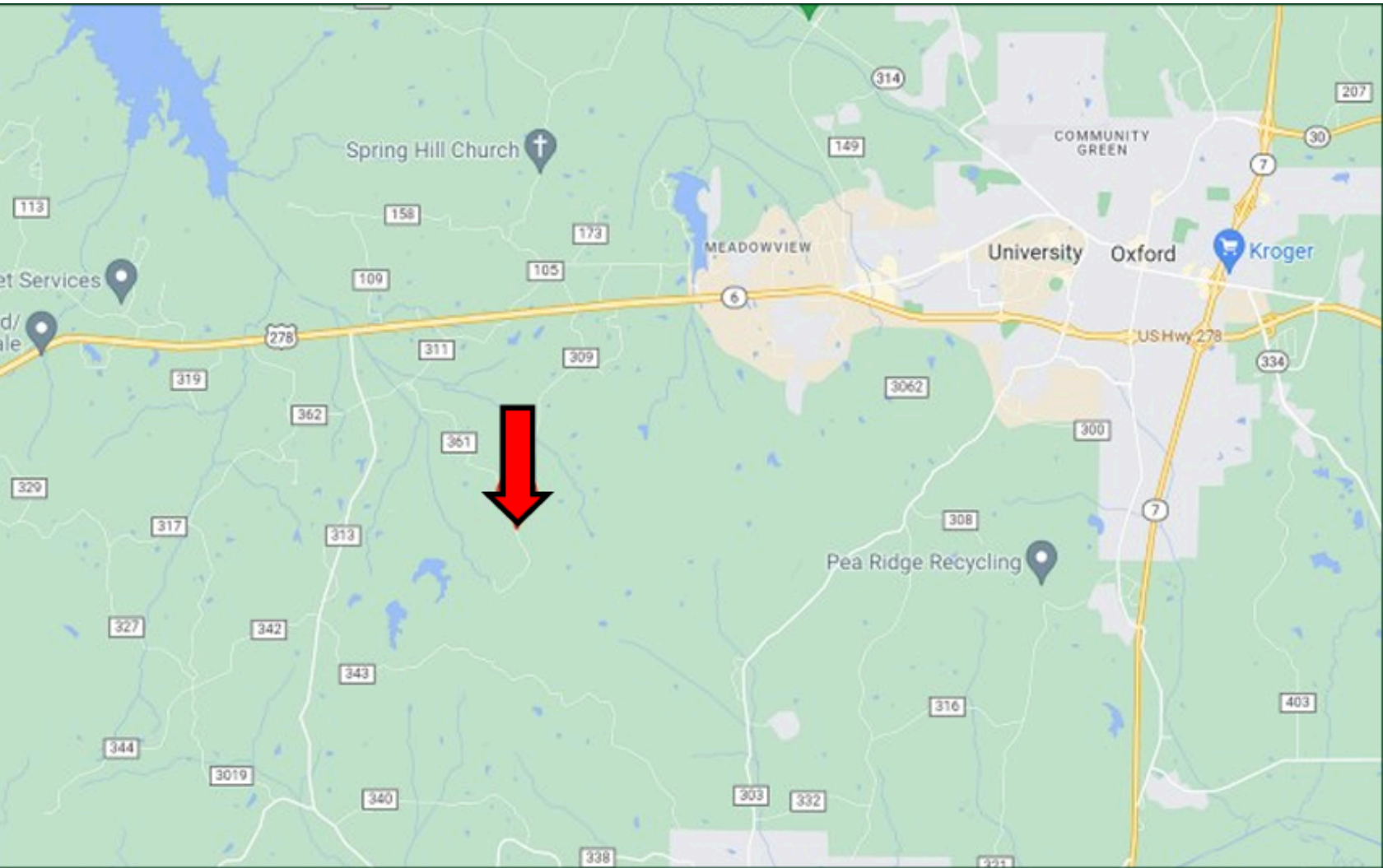


TomSmithLandandHomes.com

Information is believed to be accurate but not guaranteed.

Directional Map

[VIEW INTERACTIVE MAP](#)



DAVID BELDEN
ASSOCIATE BROKER, ALC®
O: 601.898.2772 | C: 601.415.3884
DBelden@TomSmithLand.com



DALE WILDS
REALTOR®
O: 601.898.2772 | C: 662.715.7109
Dale@TomSmithLand.com

Expect More. Get More.

The Real Estate Experts You Can Trust!



TomSmithLandandHomes.com

Information is believed to be accurate but not guaranteed.