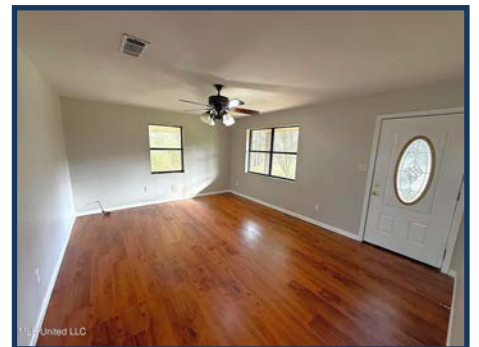




Freshly painted inside and out, new flooring, new stove and new dishwasher in this 3BR 1.5 BA Brick ranch style home for sale on 1 acre of land in Amite County MS. The home is situated about 4 miles west of Magnolia, MS on 1 acre with all boundaries marked. Brand new privacy fence, single carport, new Central AC and new septic system make this move in ready home FHA financing approved and ready to go. Call your favorite agent today for a viewing.

2027 Hamp Lea Road, Magnolia, MS

31.131524, -90.528408 GPS



\$129,900

3 Bed/1.5 Bath
1.0± Acres
MLS #4132413



Scott Campbell

Broker Associate
scottcampbell050@gmail.com
Office: (601) 250-0017
Cell: (601) 248-4595
SouthernStatesRealty.com