

PRIME WATERFRONT LOT NEAR MSU – PERFECT FOR YOUR INVESTMENT PROPERTY
.12± ACRE LOT IN THE HIGHLAND PLANTATIONS
SUBDIVISION OF OKTIBBEHA COUNTY, MS



\$19,500

Are you searching for the ideal spot to build your game day rental or Airbnb? This waterfront lot in Highlands Plantation is the perfect opportunity! As one of the last remaining lots available, this property offers an unbeatable location just minutes from Mississippi State University. Known for its appeal to college students, Highlands Plantation is a sought-after area for investment properties. With 0.12± acres of lake frontage, this lot is an excellent choice for anyone looking to capitalize on the demand for rental housing or create a thriving investment property. Don't miss this chance to secure a prime location in Oktibbeha County. Call or text Tom Wiseman today to schedule your private showing!



TOM
WISEMAN

ASSOCIATE BROKER

Office: 662.268.6333

Cell: 662.317.0467

TWiseman@TomSmithLand.com



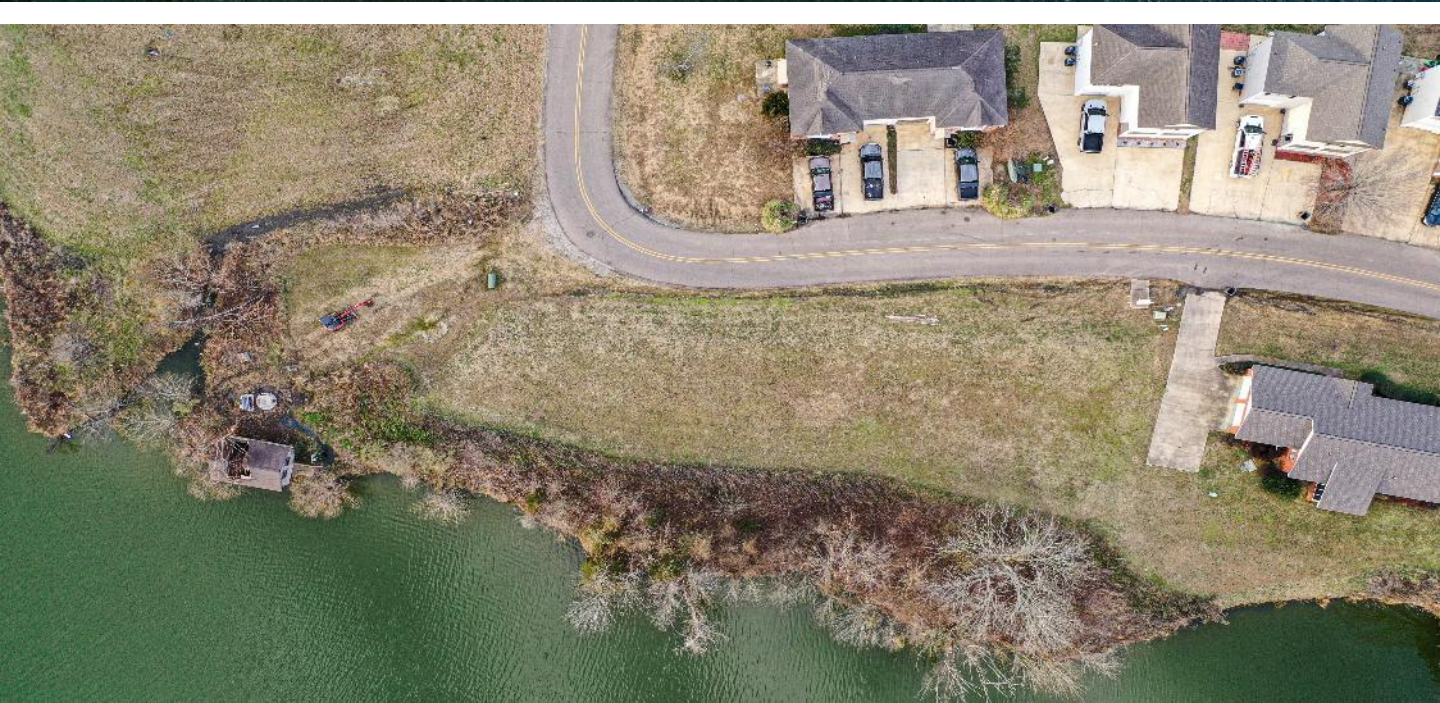
Expect More. Get More.

A Real Estate Expert You Can Trust

TomSmithLandandHomes.com

Information is believed to be accurate but not guaranteed.





A Real Estate Expert *You Can Trust!*

TOM WISEMAN

ASSOCIATE BROKER

O: 662.268.6333 C: 662.317.0467

TWiseman@TomSmithLand.com

TomSmithLandandHomes.com



Expect More. Get More.



Information is believed to be accurate but not guaranteed.

Aerial Map



Click [Here](#) for the Interactive Map Link

A Real Estate Expert
You Can Trust!

TOM WISEMAN

ASSOCIATE BROKER

O: 662.268.6333 C: 662.317.0467

TWiseman@TomSmithLand.com

TomSmithLandandHomes.com

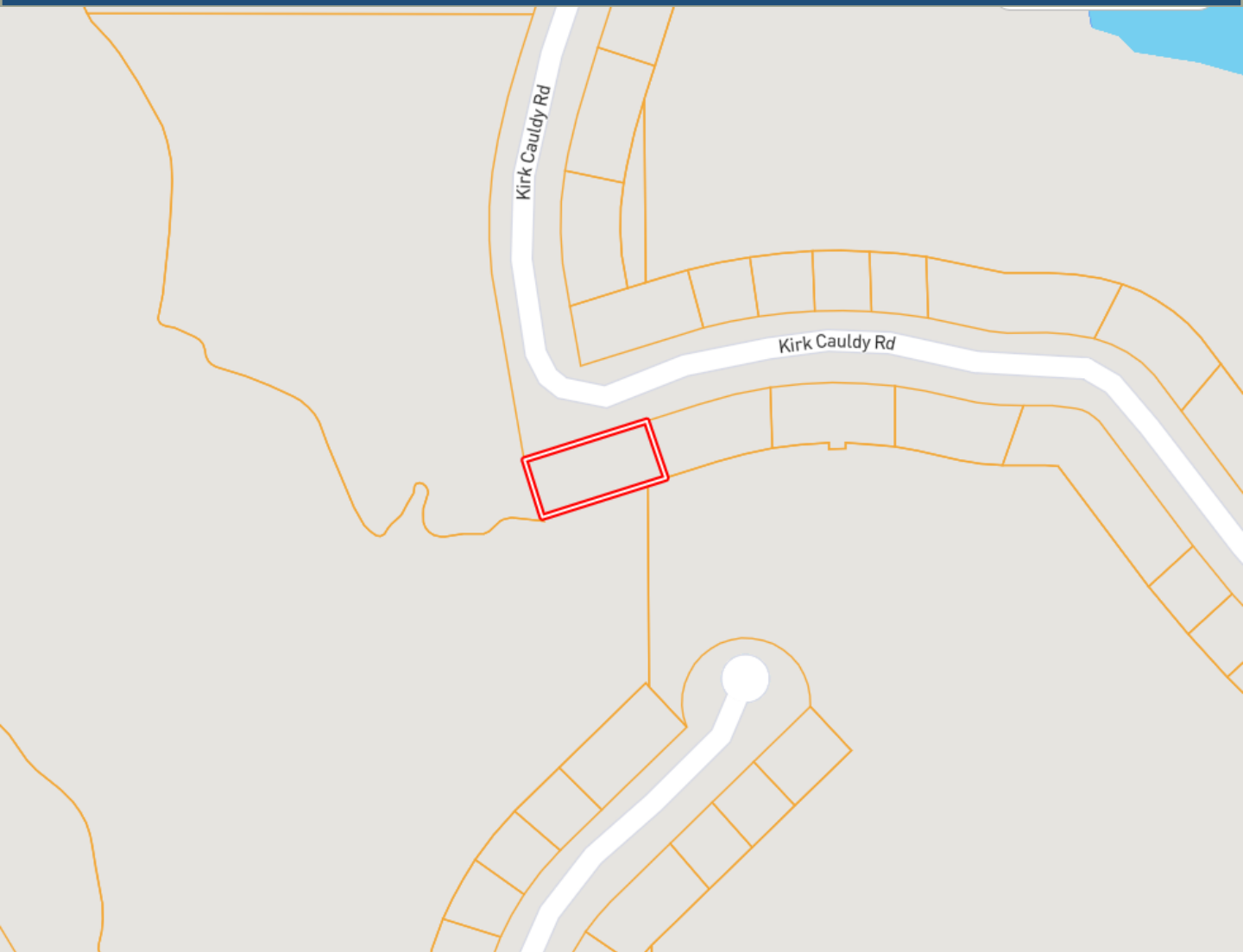


Expect More. Get More.



Information is believed to be accurate but not guaranteed.

Ownership Map



A Real Estate Expert
You Can Trust!

WALKER TRANUM

REALTOR®

O: 662.268.6333 C: 662.769.1442

Walker@TomSmithHomes.com

TomSmithLandandHomes.com

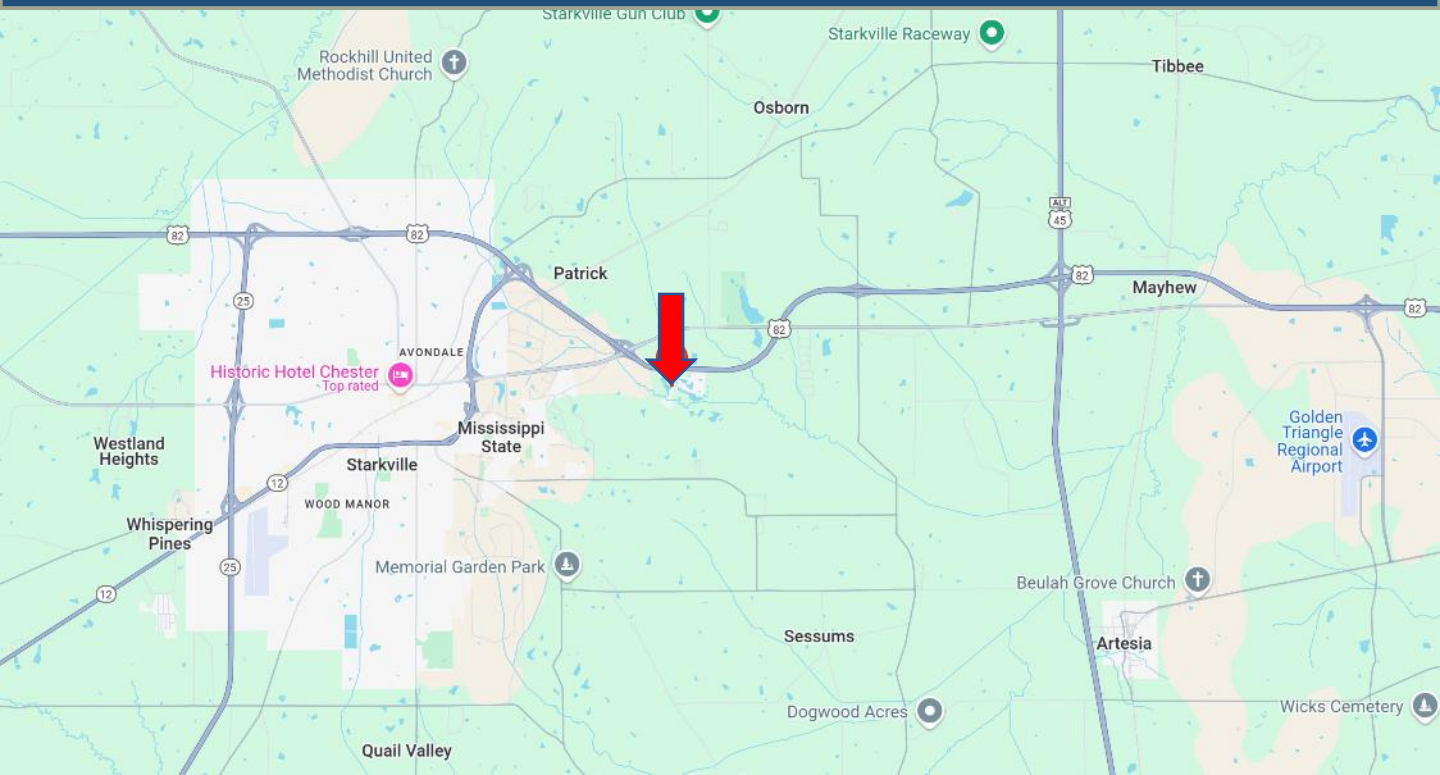


Expect More. Get More.



Information is believed to be accurate but not guaranteed.

Directional Map



Directions from Hwy 82 and Hwy 12 in Starkville, MS: Take exit 182 to merge onto Hwy 82/Hwy 25N and travel 1.3 miles. Take the exit to merge onto Hwy 182 E and travel 3.4 miles. Turn onto Saint Andrews Lane and travel 1.1 miles. Turn right onto Links Lane/Kirk Caudy Drive. After 39 feet, the property will be on your right.

[Google Map Link](#)

A Real Estate Expert
You Can Trust!

TOM WISEMAN

ASSOCIATE BROKER

O: 662.268.6333 C: 662.317.0467

TWiseman@TomSmithLand.com

TomSmithLandandHomes.com



Expect More. Get More.



Information is believed to be accurate but not guaranteed.