

DIVERSE RECREATIONAL TRACT

95.6± Acres in Newton County, MS



\$157,740

This 95.6± acre Newton County property is located off Hwy 15 and offers a prime location just outside the City of Newton on Clyde Evans Rd. Featuring a mix of pines and hardwoods of varying ages, it provides a beautiful natural setting for hunting, recreation, or a future home site. With utilities available, this property is well-suited for building a home or cabin while enjoying privacy and seclusion. Wildlife is abundant, making it an excellent hunting retreat with opportunities to spot deer, turkey, and small game. Contact Chad today to schedule a showing!

**CHAD
WILSON**

REALTOR®

Office: 601.898.2772

Cell: 601.750.1970

Chad@TomSmithLand.com



Expect More. Get More.

A Real Estate Expert You Can Trust

TomSmithLandandHomes.com

Information is believed to be accurate but not guaranteed.





A Real Estate Expert *You Can Trust!*

CHAD WILSON
REALTOR®

O: 601.898.2772 C: 601.750.1970

Chad@TomSmithLand.com

TomSmithLandandHomes.com



Expect More. Get More.

Information is believed to be accurate but not guaranteed.



AERIAL MAP



[Click Here for an Interactive Map](#)

A Real Estate Expert
You Can Trust!

CHAD WILSON
REALTOR®

O: 601.898.2772 C: 601.750.1970

Chad@TomSmithLand.com

TomSmithLandandHomes.com

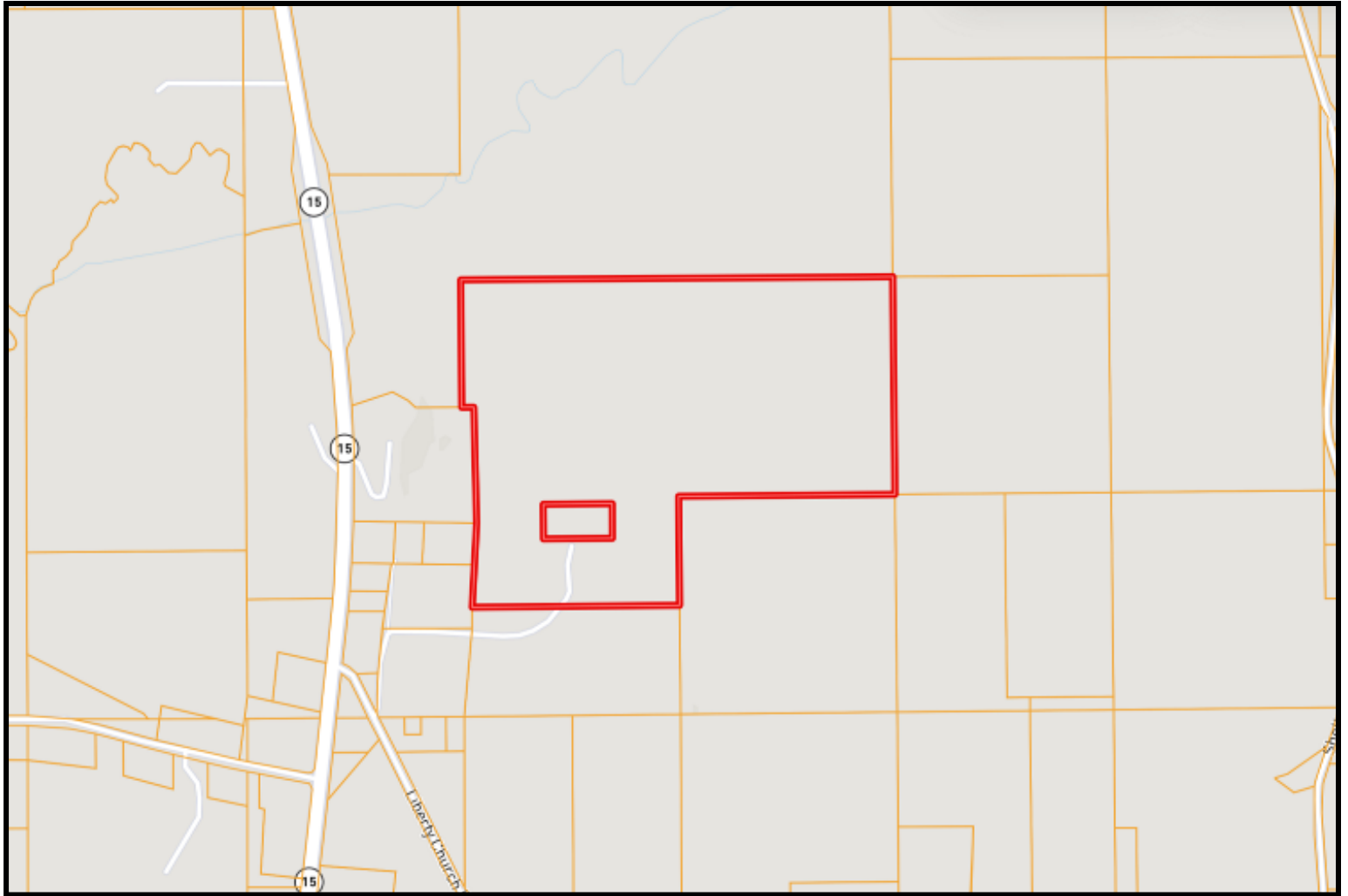


Expect More. Get More.

Information is believed to be accurate but not guaranteed.



OWNERSHIP MAP



A Real Estate Expert
You Can Trust!

CHAD WILSON
REALTOR®

O: 601.898.2772 C: 601.750.1970

Chad@TomSmithLand.com

TomSmithLandandHomes.com

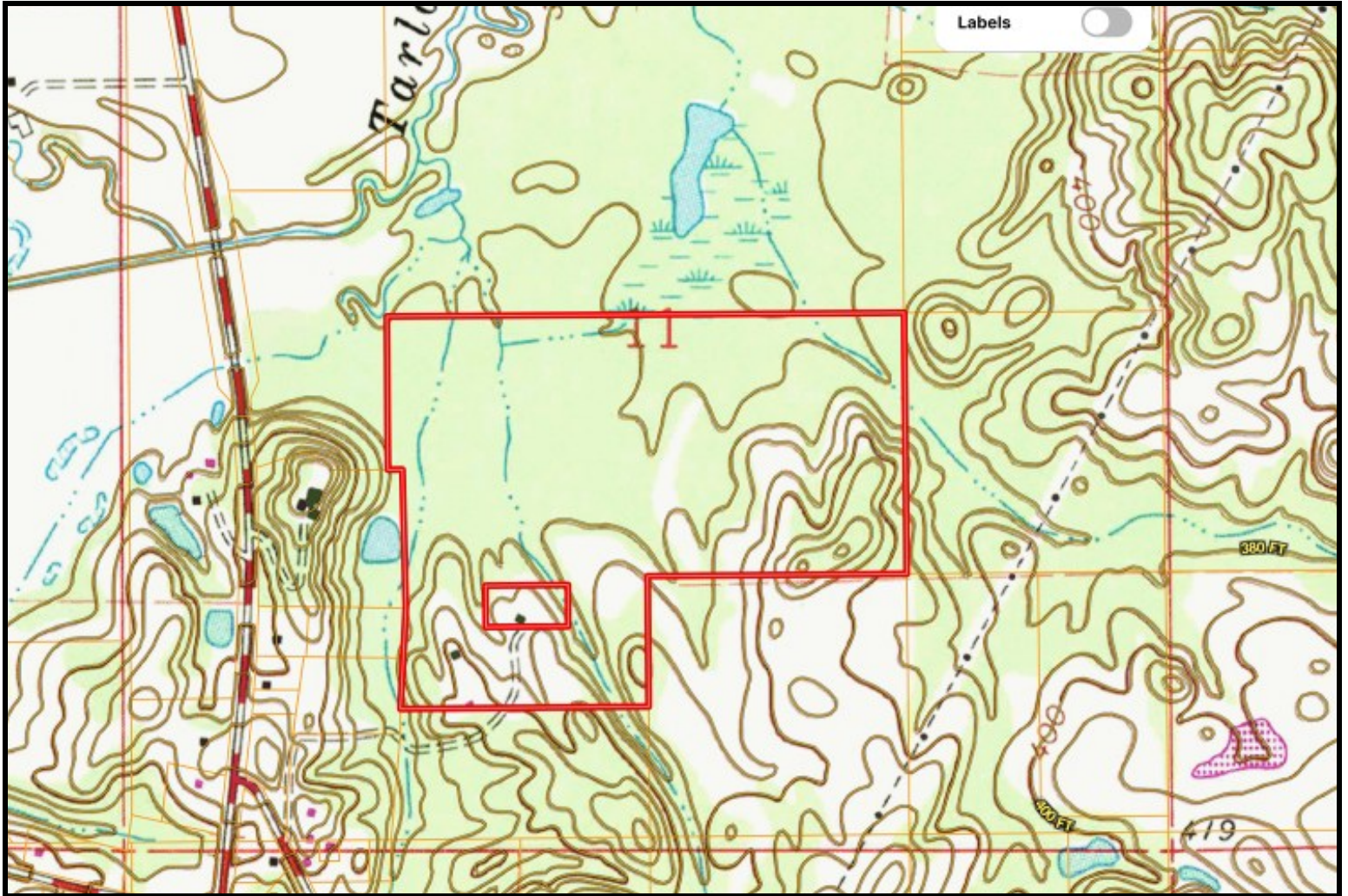


Expect More. Get More.

Information is believed to be accurate but not guaranteed.



TOPO MAP



A Real Estate Expert
You Can Trust!

CHAD WILSON
REALTOR®

O: 601.898.2772 C: 601.750.1970

Chad@TomSmithLand.com

TomSmithLandandHomes.com

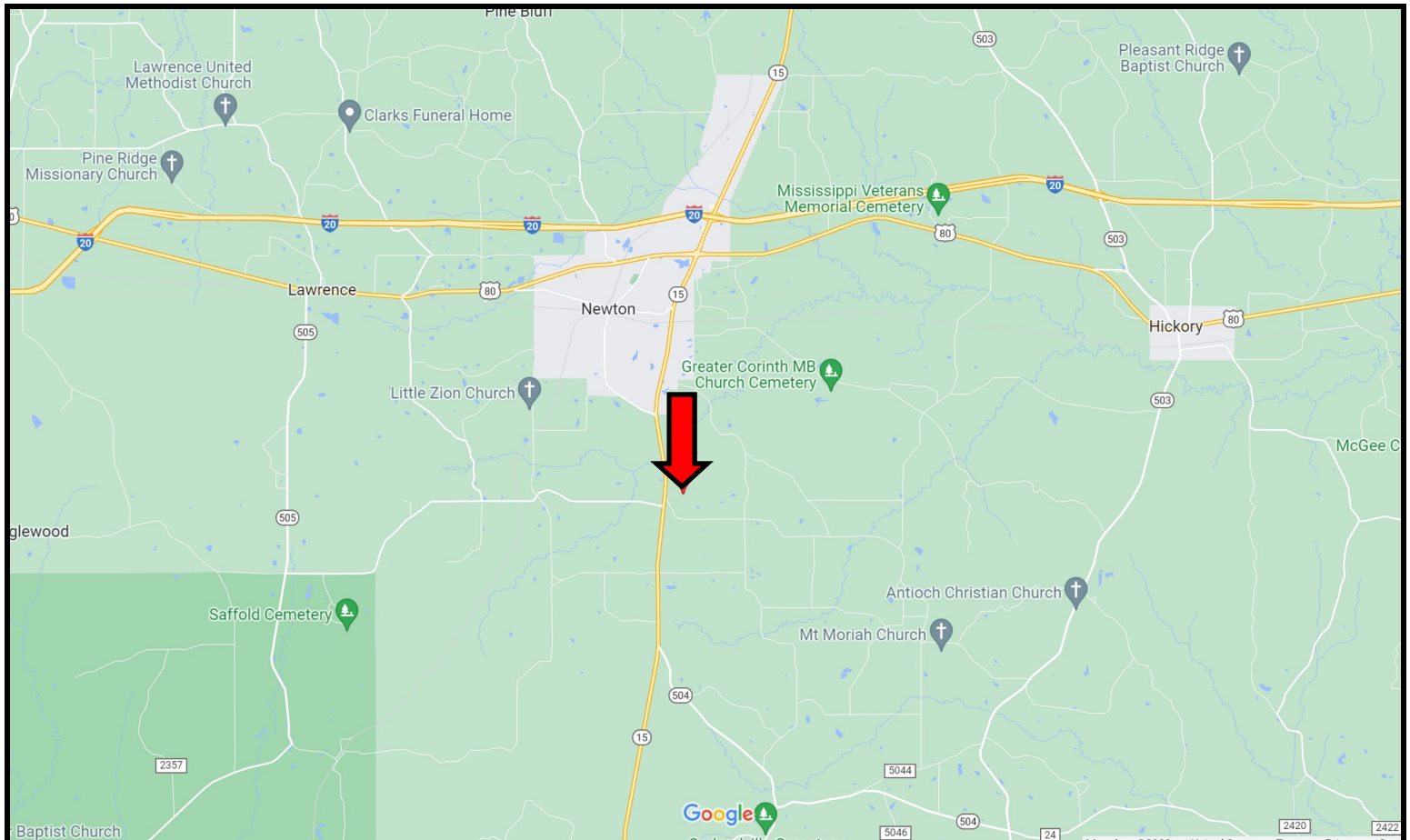


Expect More. Get More.

Information is believed to be accurate but not guaranteed.



DIRECTIONAL MAP



DIRECTIONS FROM I-20 AND HWY 15 IN NEWTON, MS: Travel Hwy 15 S for 3.6 miles. Turn left onto Liberty Church Rd. and immediately turn left onto Clyde Evans Rd. The property will be on your left. **[GOOGLE MAP LINK](#)**



**CHAD
WILSON**

REALTOR®

Office: 601.898.2772

Cell: 601.750.1970

Chad@TomSmithLand.com



Expect More. Get More.

A Real Estate Expert You Can Trust

TomSmithLandandHomes.com

Information is believed to be accurate but not guaranteed.

