

Hunting • Recreation • Homesite

105± Acres in Winston County, MS



\$191,625

Are you looking for a great recreational tract that offers excellent hunting? Well, here it is! 105± acres in Nanih Waiya, Winston County, MS! Part of this tract was clear cut in 2016, and the remaining acreage is hardwood bottomland and sloughs. There is an internal road system throughout, giving you access to most areas of the property. There is also a nice cabin or home site with water and power available nearby. This property features over 600 feet of road frontage on Highway 397 with multiple points of access. This tract is 22 minutes from Louisville, 15 minutes from Noxapater, and 26 minutes from Philadelphia. Call Johnny for your private showing today!



**JOHNNY
LUKE**
REALTOR®

Office: 662.268.6333

Cell: 662.803.2622

JohnnyLuke@TomSmithLand.com



Expect More. Get More.

A Real Estate Expert You Can Trust

TomSmithLandandHomes.com

Information is believed to be accurate but not guaranteed.





A Real Estate Expert
You Can Trust!

JOHNNY LUKE
REALTOR®

O: 662.268.6333 C: 662.803.2622

JohnnyLuke@TomSmithLand.com

TomSmithLandandHomes.com

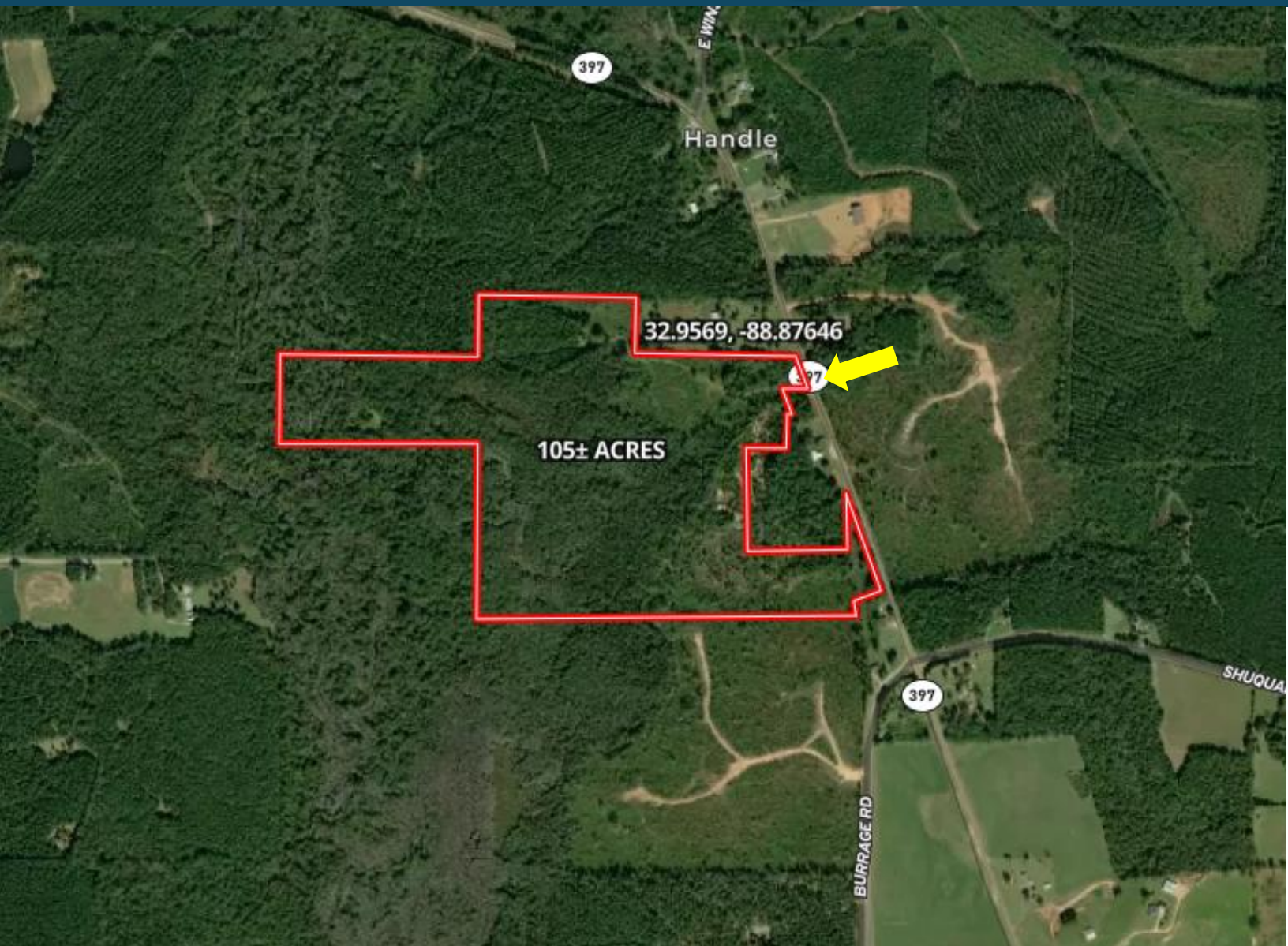


Expect More. Get More.

Information is believed to be accurate but not guaranteed.



Aerial Map



[Click Here for Interactive Map](#)

A Real Estate Expert
You Can Trust!

JOHNNY LUKE
REALTOR®

O: 662.268.6333 C: 662.803.2622

JohnnyLuke@TomSmithLand.com

TomSmithLandandHomes.com

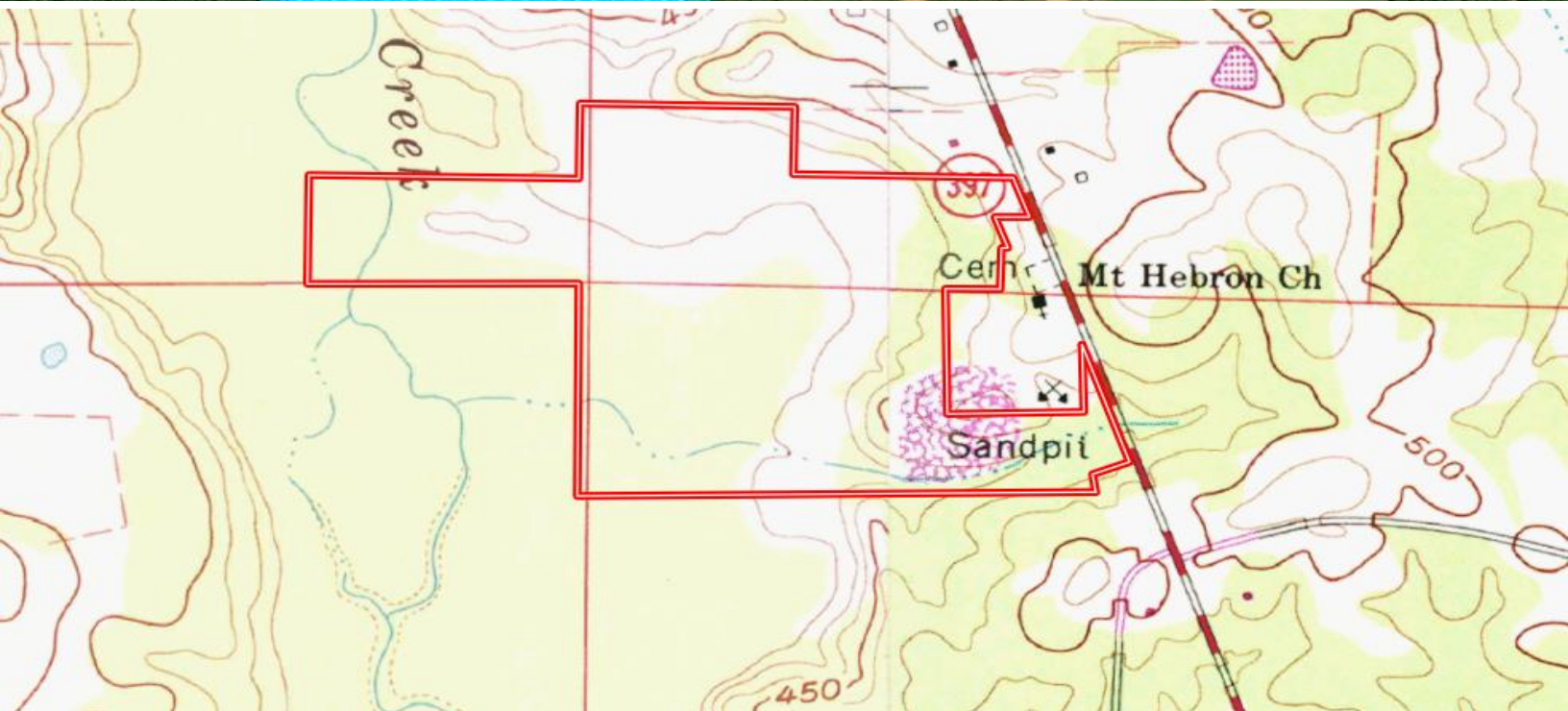
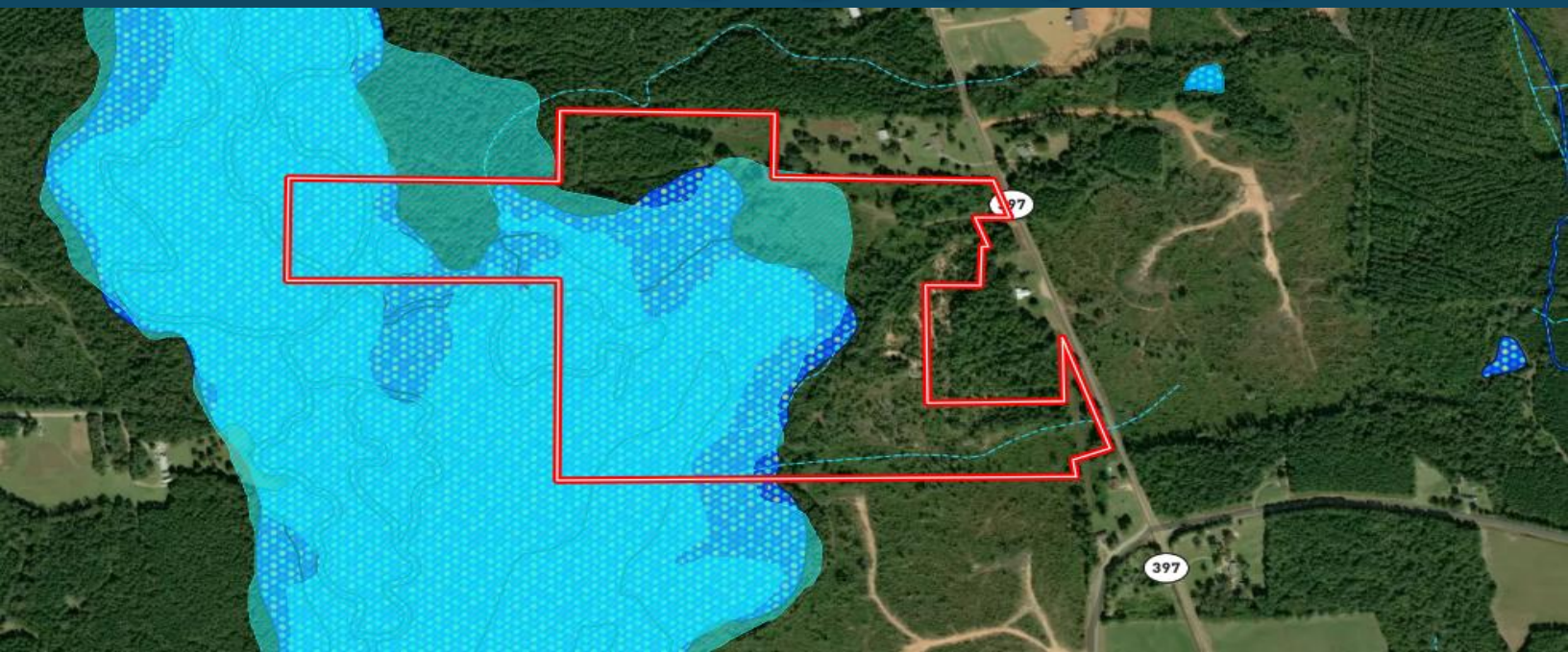


Expect More. Get More.

Information is believed to be accurate but not guaranteed.



Flood | Topography Map



A Real Estate Expert
You Can Trust!

JOHNNY LUKE

REALTOR®

O: 662.268.6333 C: 662.803.2622

JohnnyLuke@TomSmithLand.com

TomSmithLandandHomes.com

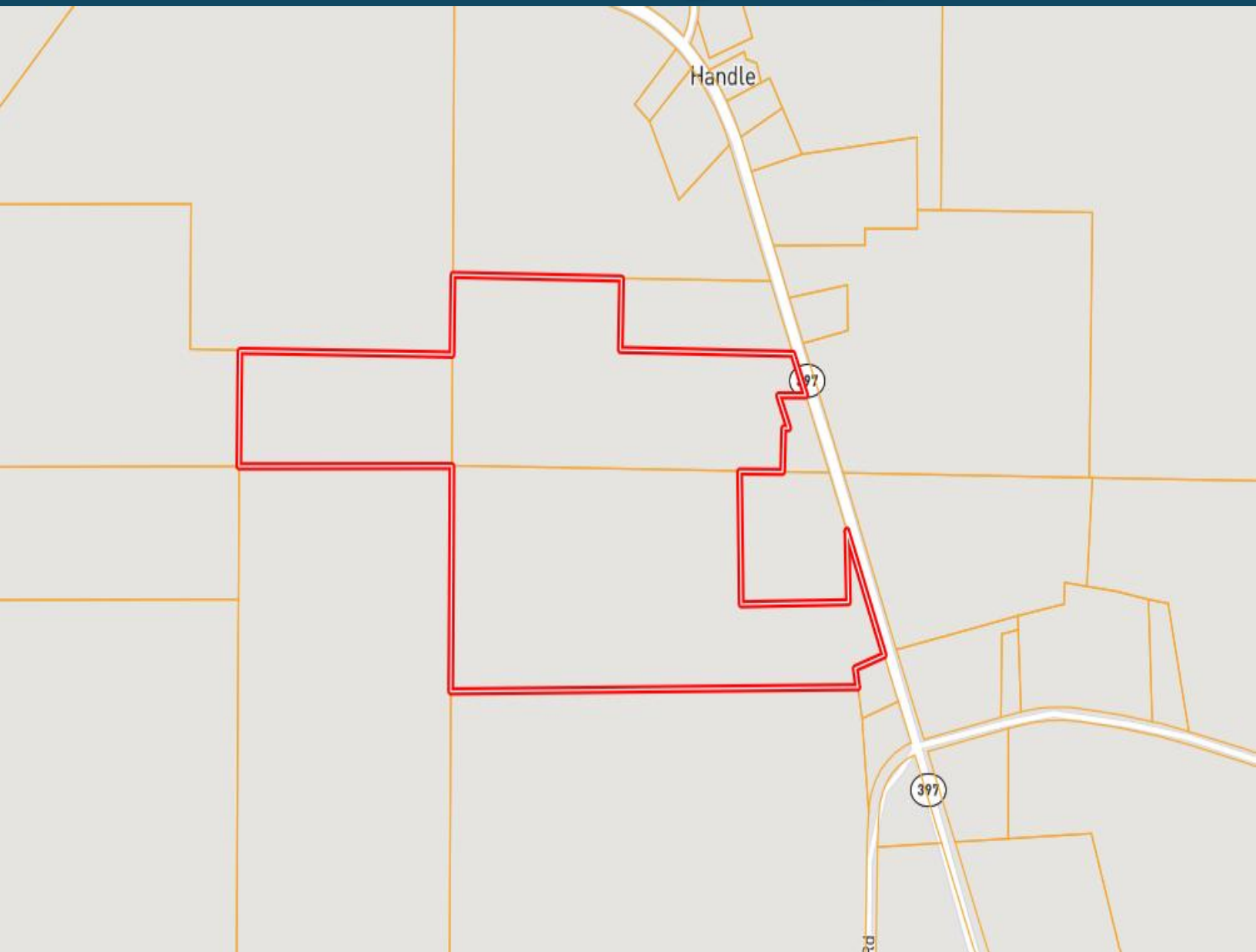


Expect More. Get More.

Information is believed to be accurate but not guaranteed.



Ownership Map



A Real Estate Expert
You Can Trust!

JOHNNY LUKE
REALTOR®

O: 662.268.6333 C: 662.803.2622

JohnnyLuke@TomSmithLand.com

TomSmithLandandHomes.com

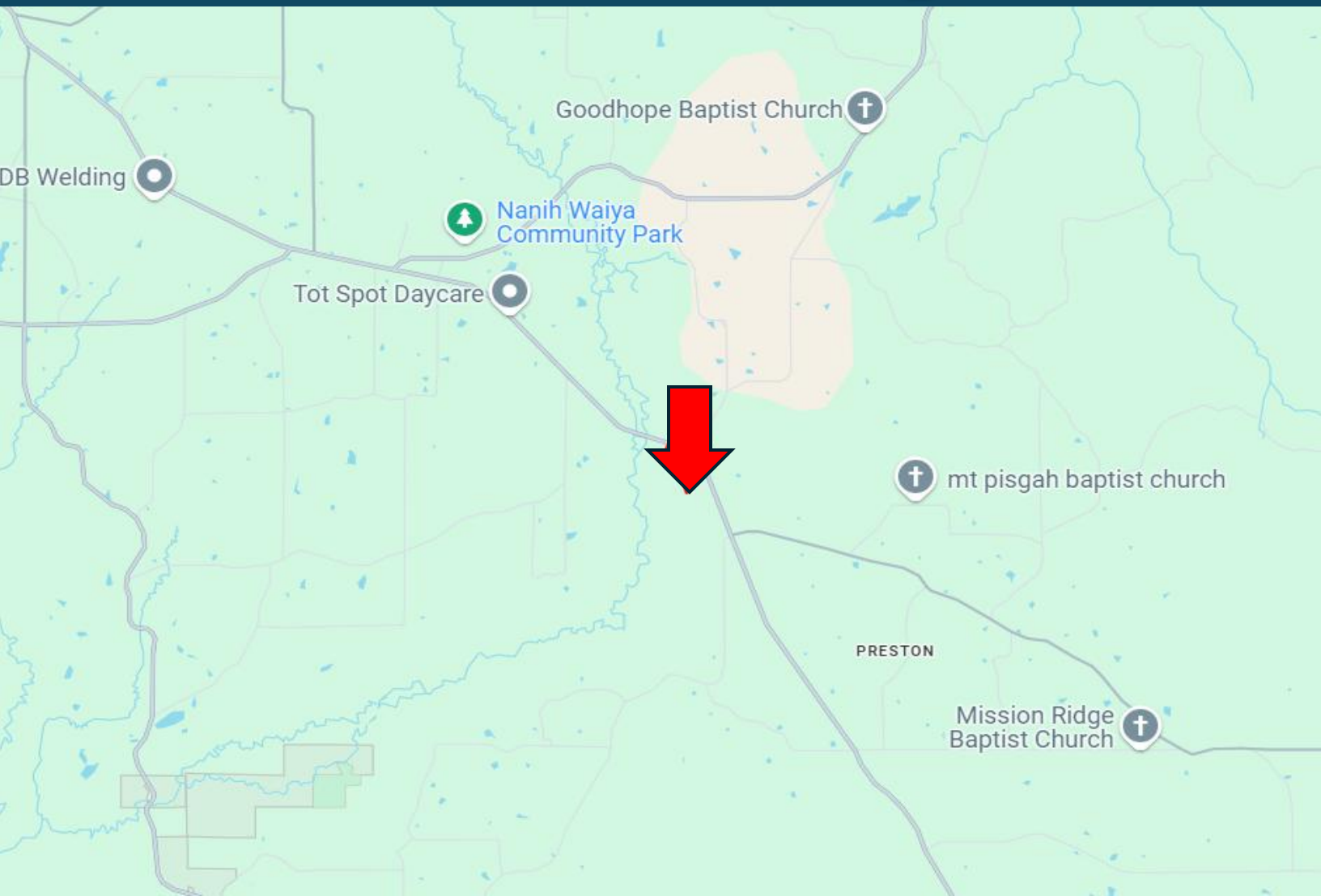


Expect More. Get More.

Information is believed to be accurate but not guaranteed.



Directional Map



Directions from MS-490 in Louisville, MS: Travel southwest on MS-490 toward MS-397 S for 39ft. Turn left onto MS-397 S for 3.2mi. The property will be on your right. [Google Map Link](#)



**JOHNNY
LUKE**
REALTOR®

Office: 662.268.6333

Cell: 662.803.2622

JohnnyLuke@TomSmithLand.com



A Real Estate Expert You Can Trust

TomSmithLandandHomes.com

Information is believed to be accurate but not guaranteed.

