



# ANDRUS

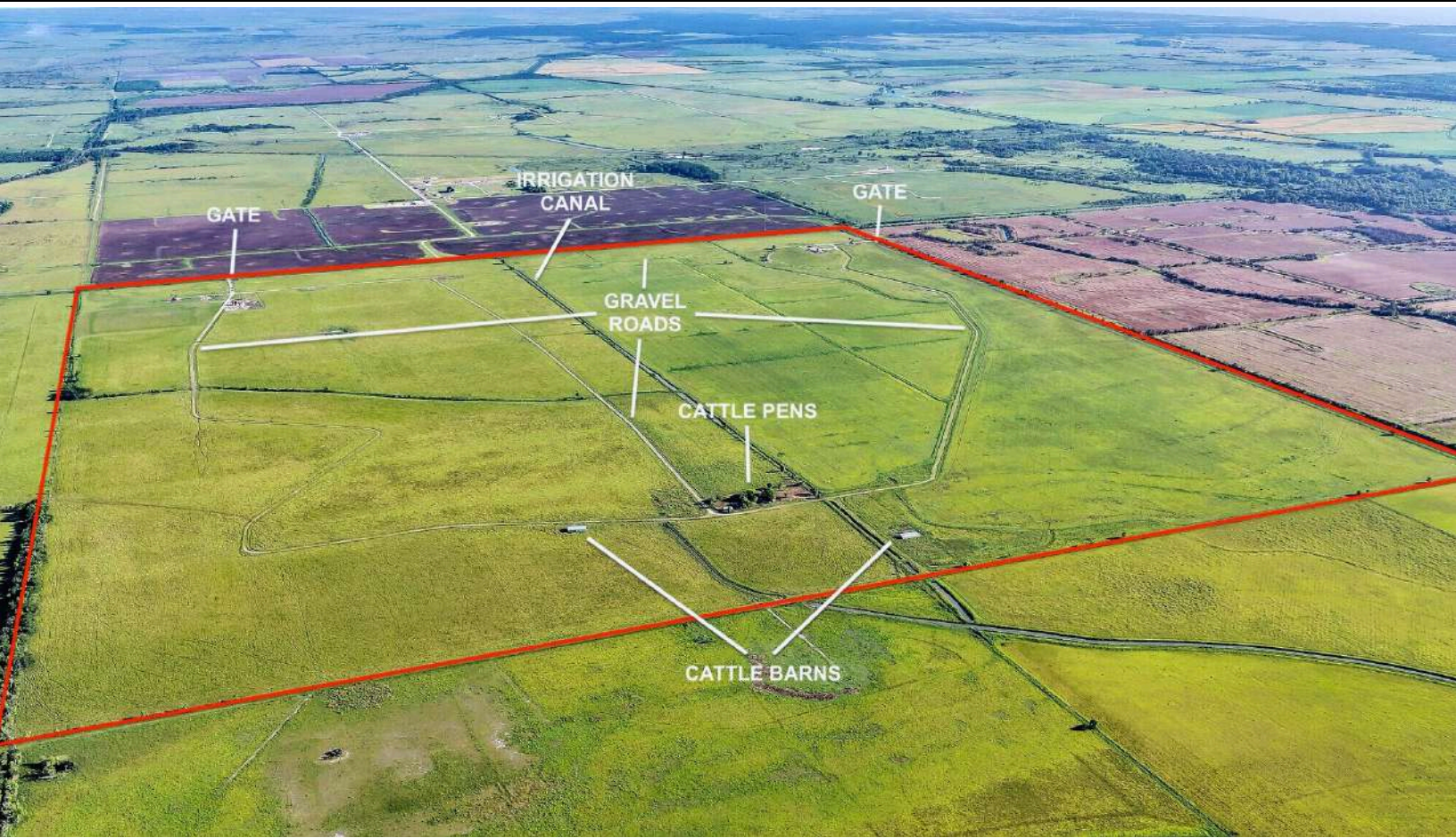
ESTD LAND GROUP 1824

## TBD HWY 65 & FM 1724 ANAHUAC, TX 77514 CHAMBERS COUNTY

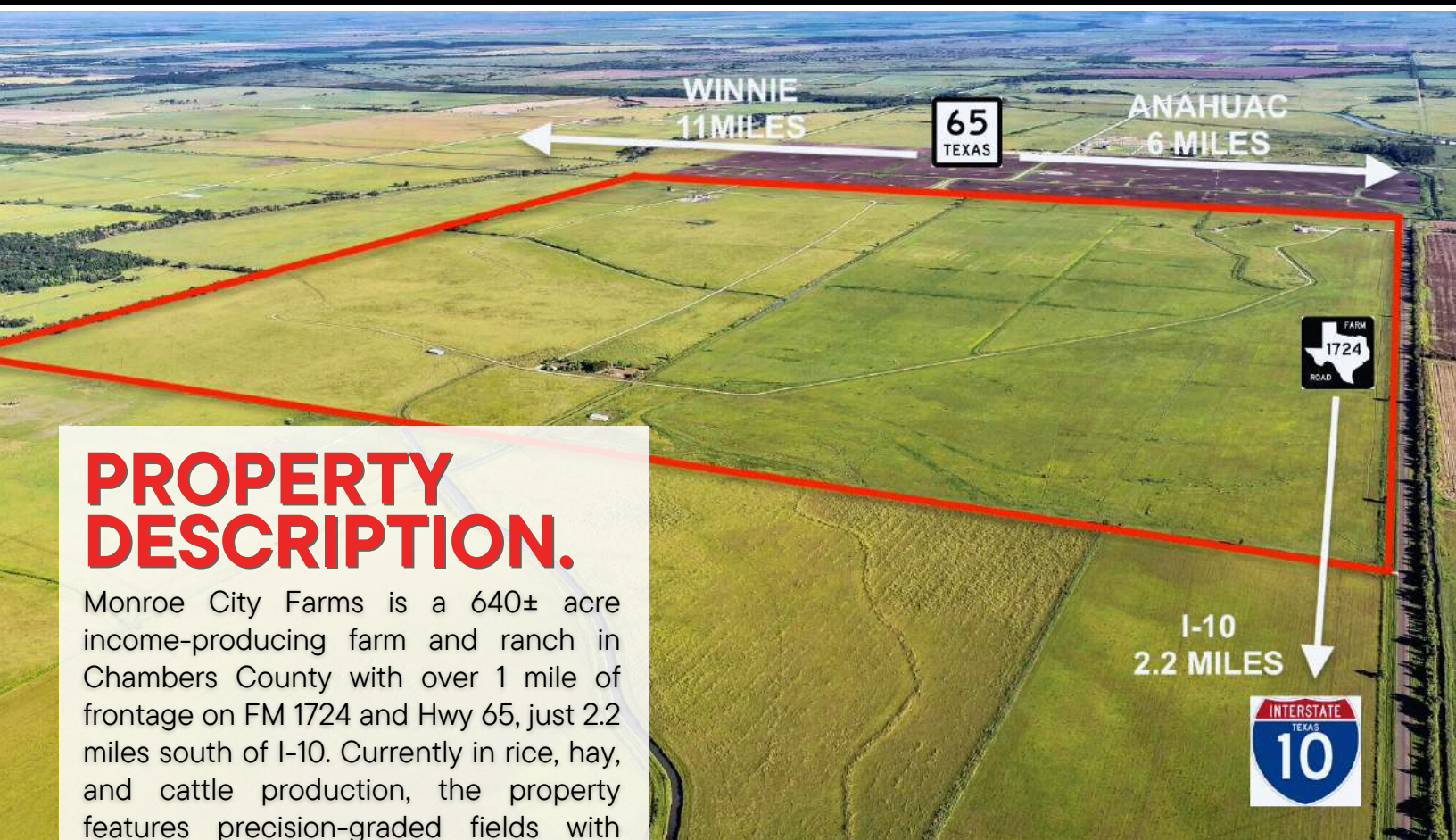
### 640± ACRES | \$4,992,000



**COLDWELL BANKER**  
D'ANN HARPER, REALTORS®  
LAND & RANCH



THE INFORMATION PROVIDED HEREIN IS BELIEVED TO BE ACCURATE BUT IS NOT GUARANTEED BY ANDRUS LAND GROUP. DETAILS ARE SUBJECT TO CHANGE AT ANY TIME WITHOUT NOTICE.

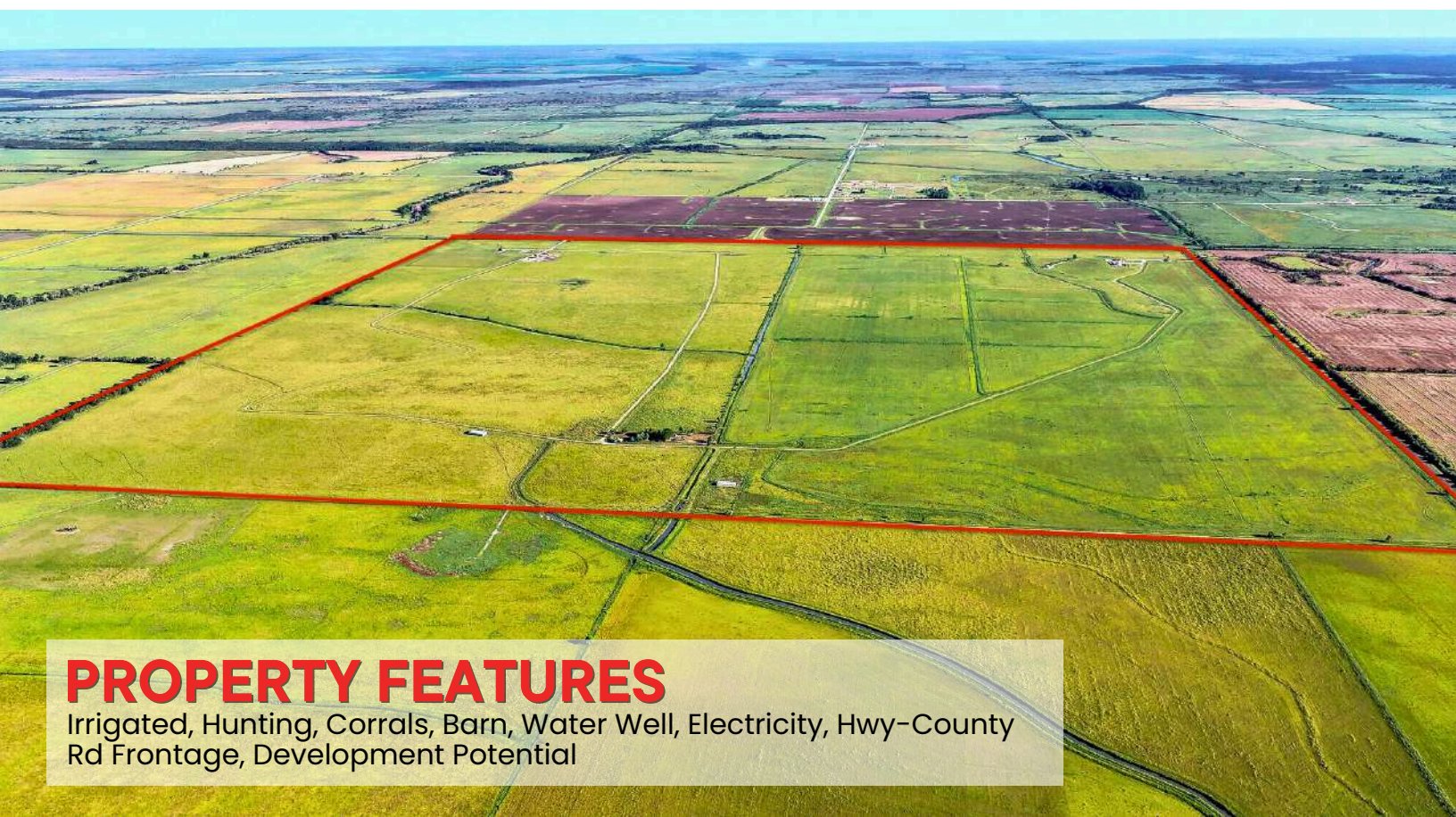


# PROPERTY DESCRIPTION.

Monroe City Farms is a 640± acre income-producing farm and ranch in Chambers County with over 1 mile of frontage on FM 1724 and Hwy 65, just 2.2 miles south of I-10. Currently in rice, hay, and cattle production, the property features precision-graded fields with irrigation water provided by CLCND, cross fencing, working pens, and three cattle loafing sheds. All-weather gravel roads offer year-round access throughout the ranch, ensuring ease of movement for equipment and livestock. The tract's layout and soil quality support high-yield cultivation, while its extensive infrastructure allows for seamless operation. With strong road access, dependable irrigation water, and multiple ag revenue streams, Monroe City Farms is a rare opportunity for producers, investors, and developers seeking a scalable, multifunctional property in the heart of Southeast Texas farming country. Contact us to schedule a showing!



THE INFORMATION PROVIDED HEREIN IS BELIEVED TO BE ACCURATE BUT IS NOT GUARANTEED BY ANDRUS LAND GROUP. DETAILS ARE SUBJECT TO CHANGE AT ANY TIME WITHOUT NOTICE.



## PROPERTY FEATURES

Irrigated, Hunting, Corrals, Barn, Water Well, Electricity, Hwy-County Rd Frontage, Development Potential



THE INFORMATION PROVIDED HEREIN IS BELIEVED TO BE ACCURATE BUT IS NOT GUARANTEED BY ANDRUS LAND GROUP. DETAILS ARE SUBJECT TO CHANGE AT ANY TIME WITHOUT NOTICE.

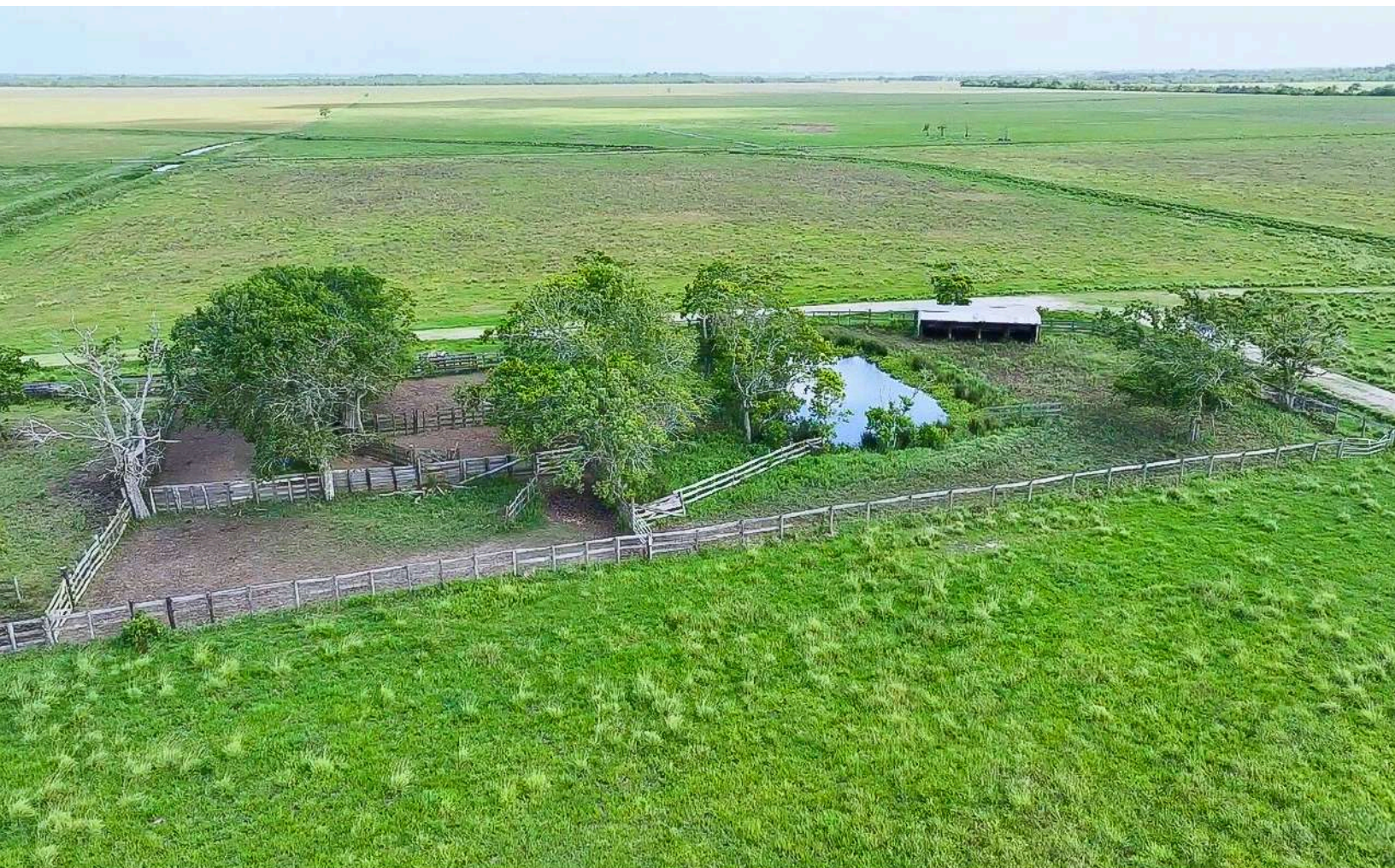


## PROPERTY TYPE

Acreage, Hunting Land, Recreational Land, Ranch, Farm, Agriculture Business, Cattle Ranch



THE INFORMATION PROVIDED HEREIN IS BELIEVED TO BE ACCURATE BUT IS NOT GUARANTEED BY ANDRUS LAND GROUP. DETAILS ARE SUBJECT TO CHANGE AT ANY TIME WITHOUT NOTICE.

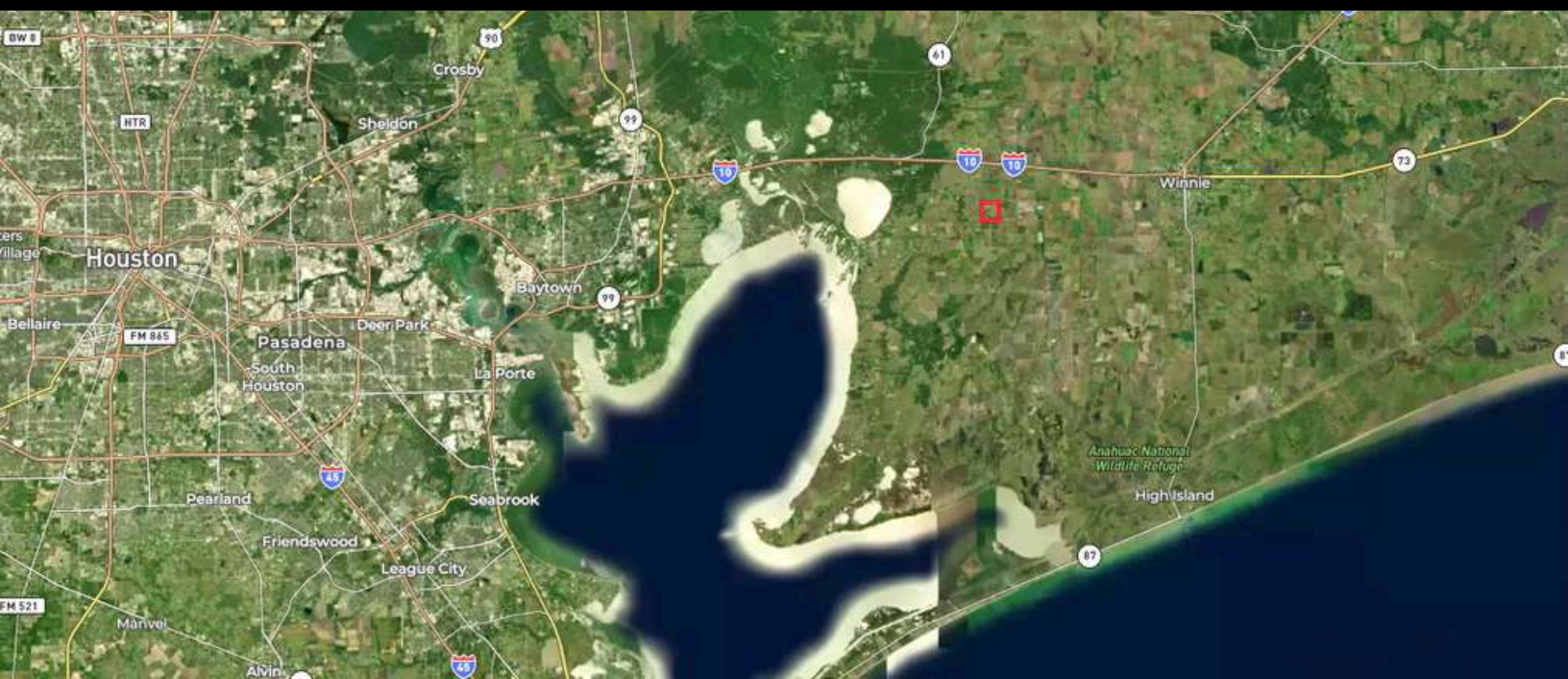
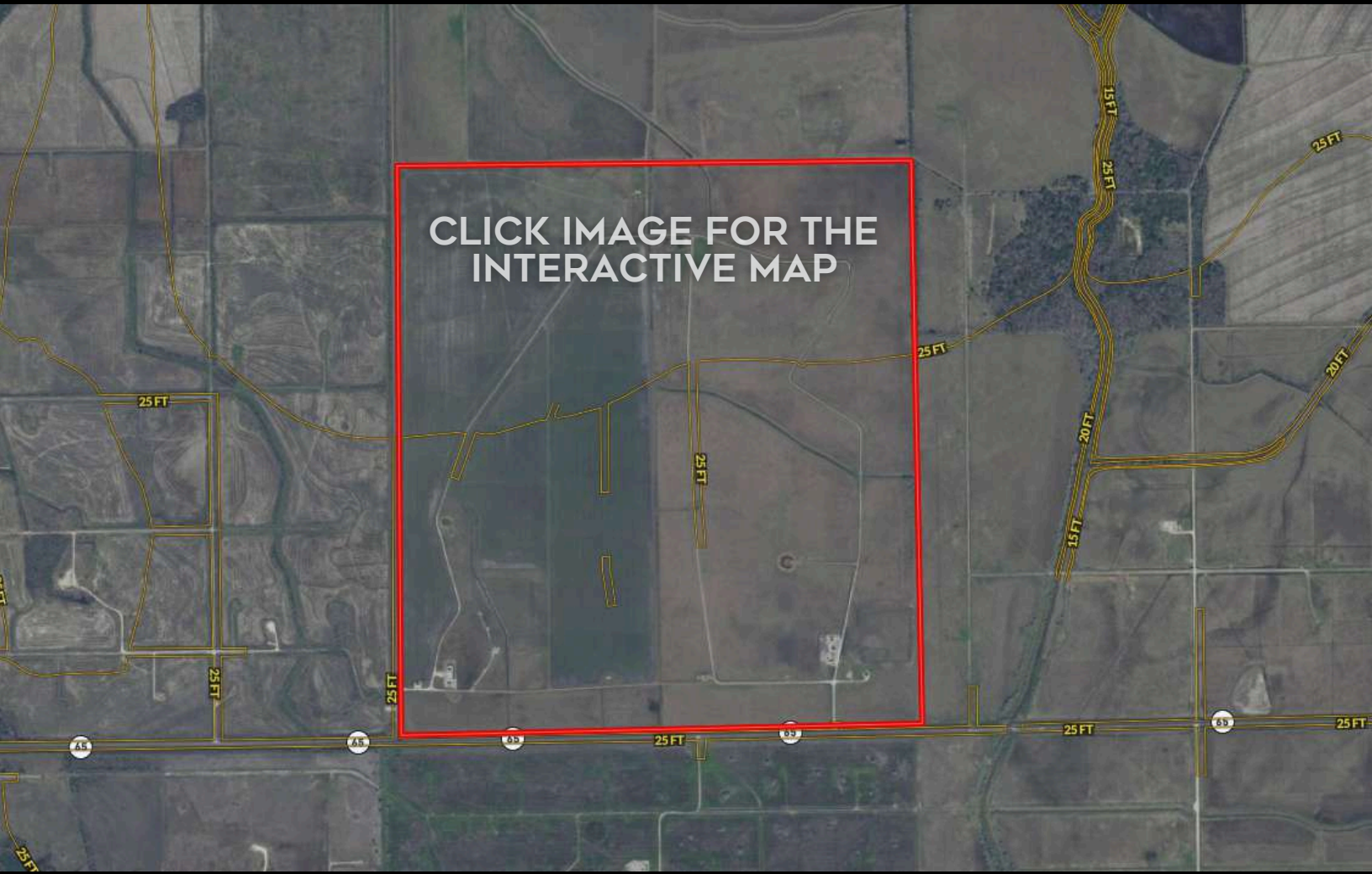


THE INFORMATION PROVIDED HEREIN IS BELIEVED TO BE ACCURATE BUT IS NOT GUARANTEED BY ANDRUS LAND GROUP. DETAILS ARE SUBJECT TO CHANGE AT ANY TIME WITHOUT NOTICE.

# TBD HWY 65 & FM 1724 ANAHUAC, TX 77514

## CHAMBERS COUNTY





## NAVIGATION DIRECTIONS

Whether traveling on I-10 from the east or west, take exit 817 FM 1724 and head south for 2.2 miles. Property will be on your left

# CHAD ANDRUS, ALC ACCREDITED LAND CONSULTANT

chad@andruslandgroup.com  
832-402-9211  
www.andruslandgroup.com



ALL MATERIALS AND INFORMATION RECEIVED OR DERIVED FROM ANDRUS LAND GROUP AND ITS DIRECTORS, OFFICERS, AGENTS, ADVISORS, AFFILIATES AND/OR ANY THIRD PARTY SOURCES ARE PROVIDED WITHOUT REPRESENTATION OR WARRANTY AS TO COMPLETENESS, VERACITY, OR ACCURACY, CONDITION OF THE PROPERTY, COMPLIANCE OR LACK OF COMPLIANCE WITH APPLICABLE GOVERNMENTAL REQUIREMENTS, DEVELOPABILITY OR SUITABILITY, FINANCIAL PERFORMANCE OF THE PROPERTY, PROJECTED FINANCIAL PERFORMANCE OF THE PROPERTY FOR ANY PARTY'S INTENDED USE OR ANY AND ALL OTHER MATTERS. NEITHER ANDRUS LAND GROUP, ITS DIRECTORS, OFFICERS, AGENTS, ADVISORS, OR AFFILIATES MAKES ANY REPRESENTATION OR WARRANTY, EXPRESS OR IMPLIED, AS TO ACCURACY OR COMPLETENESS OF THE MATERIALS OR INFORMATION PROVIDED, DERIVED, OR RECEIVED. MATERIALS AND INFORMATION FROM ANY SOURCE, WHETHER WRITTEN OR VERBAL, THAT MAY BE FURNISHED FOR REVIEW ARE NOT A SUBSTITUTE FOR A PARTY'S ACTIVE CONDUCT OF ITS OWN DUE DILIGENCE TO DETERMINE THESE AND OTHER MATTERS OF SIGNIFICANCE TO SUCH PARTY. ANDRUS LAND GROUP WILL NOT INVESTIGATE OR VERIFY ANY SUCH MATTERS OR CONDUCT DUE DILIGENCE FOR A PARTY UNLESS OTHERWISE AGREED IN WRITING. EACH PARTY SHALL CONDUCT ITS OWN INDEPENDENT INVESTIGATION AND DUE DILIGENCE.

# Ranch. financing made simple



Anthony Vaughan

WINNIE OFFICE

NMLS493828 | 409.400.4066 | capitalfarmcredit.com