

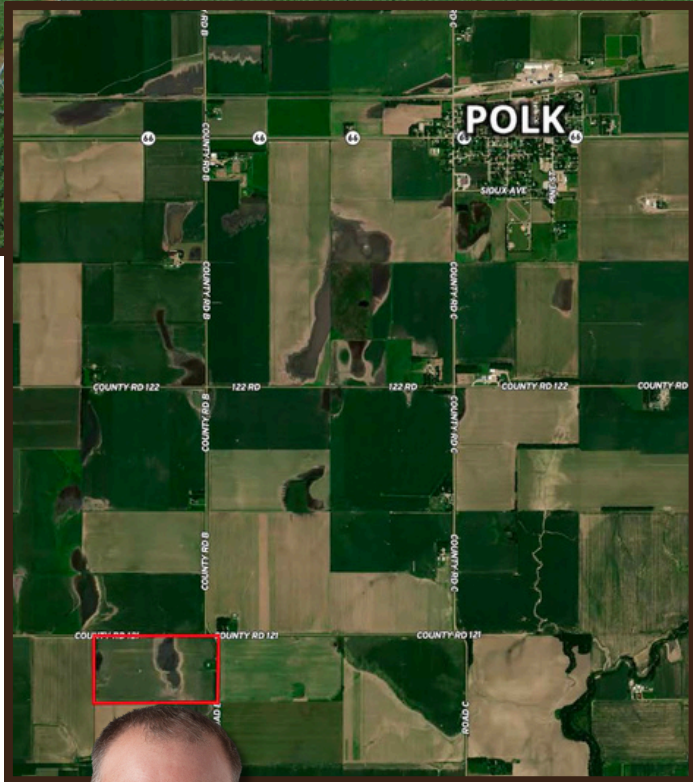
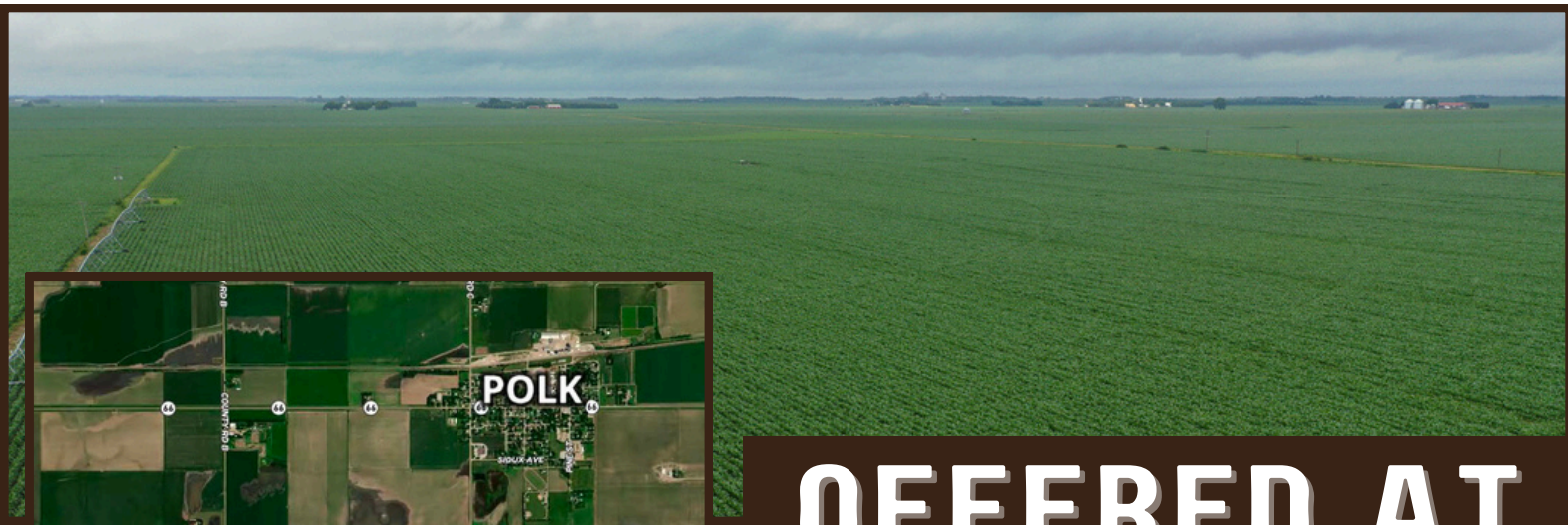
# FOR SALE

## 86.45 +/- IRRIGATED ACRES + BUILDING

### — YORK COUNTY, NEBRASKA —



IF YOU ARE LOOKING TO EXPAND YOUR OPERATION INTO A HIGHLY PRODUCTIVE AREA CLOSE TO MULTIPLE ELEVATORS AND ETHANOL PLANTS, THIS IS THE PROPERTY FOR YOU. THE PROPERTY IS SET UP TO WATER A MAJORITY OF THE FARM WITH THE PIVOT, BUT ALSO HAS UNDERGROUND PIPE BURIED TO THE 2 CORNERS TO GRAVITY WATER THEM. COME TAKE A LOOK AT THIS NICE PROPERTY.



**OFFERED AT**  
**\$916,400**  
**(\$10,600/ACRE)**

### PROPERTY DIRECTIONS

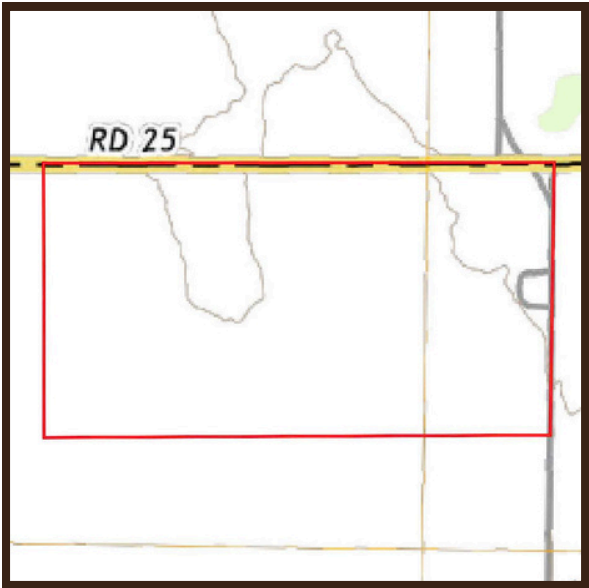
TAKE HIGHWAY 66 WEST OUT OF POLK FOR 1 MILE TO COUNTY ROAD B. TURN AND GO SOUTH 2 MILES TO COUNTY ROAD 121. THE PROPERTY IS LOCATED TO THE SOUTHWEST OF THIS INTERSECTION.



**KRAIG URKOSKI**  
FARM & RANCH SPECIALIST  
CLARKS, NEBRASKA  
KRAIG.URKOSKI@AGWESTLAND.COM  
(308) 548-8431







**TOTAL ACRES (PER ASSESSOR) - 86.45 +/-**

- IRRIGATED ACRES - 82.30 +/-
- OTHER ACRES - 3.23 +/-
- BUILDING SITE - 0.92 +/-

**LEGAL DESCRIPTION**

**NORTH HALF OF THE NORTHEAST QUARTER OF SECTION 6,  
TOWNSHIP 12, RANGE 4 WEST, YORK COUNTY, NEBRASKA**

**PROPERTY TAXES**

**\$3,886.70**

**IRRIGATION INFORMATION**

**WELL G-004026**

- DRILLED 4/11/57, 700 GPM, 77' STATIC LEVEL, 95' PUMPING LEVEL, 155' WELL DEPTH, 25 HP ELECTRIC MOTOR

**LOCATED IN UPPER BIG BLUE NRD**

**2005 ZIMMATIC 7 TOWER PIVOT**

**FSA INFORMATION**

**TOTAL CROPLAND ACRES - 83.99**  
**WHEAT - 4.3 BASE ACES - 37 PLC YIELD**  
**CORN - 63.1 BASE ACRES - 151 PLC YIELD**  
**GRAIN SORGHUM - 1.8 BASE ACRES - 84 PLC YIELD**  
**SOYBEANS - 3.7 BASE ACRES - 51 PLC YIELD**  
**TOTAL BASE ACRES - 72.9**

**STORAGE/BARN**

**BEHLEN CURVET MACHINE SHED**  
 • ROUGHLY 40' X 60'

**\*ALL MINERAL RIGHTS OWNED BY SELLER, IF ANY, CONVEY TO BUYER.**



The information contained herein is as obtained by AgWest Land Brokers LLC-Holdrege, NE from the owner and other sources. Even though this information is considered reliable, neither broker nor owner make any guarantee, warranty or representation as to the correctness of any data or descriptions. The accuracy of such statements should be determined through independent investigation made by the prospective purchaser. This offer for sale is subject to prior sale, errors and omissions, change of price, terms or other conditions or withdrawal from sale in whole or in part, by seller without notice and at the sole discretion of seller. Readers are urged to form their own independent conclusions and evaluations in consultation with legal counsel, accountants, and/or investment advisors concerning any and all material contained herein. Maps are for illustrative purposes only and are not intended to represent actual property lines.