

Country Living in Sunflower County on 9.32± Acres



*Welcome to 17 Neal Robinson Road
Drew, MS 38737 / \$99,000*

This country home is situated on 9.32± acres, complete with your very own duck hole. The brick home features three bedrooms and two bathrooms, providing a total of 2,132± square feet of heated and cooled living space. One of the standout features of this property is the spacious bonus room, which could be ideal for adding bunk beds for a hunting camp, or it could be transformed into a playroom for your kids—the possibilities are endless. The primary bedroom includes a private bathroom and a walk-in closet.
Call Anthony Steen today for a private tour of this property!



**ANTHONY
STEEN**
REALTOR®

Office: 601.898.2772

Cell: 662.645.5151

Anthony@TomSmithLand.com



Expect More. Get More.

A Real Estate Expert You Can Trust

TomSmithLandandHomes.com

Information is believed to be accurate but not guaranteed.





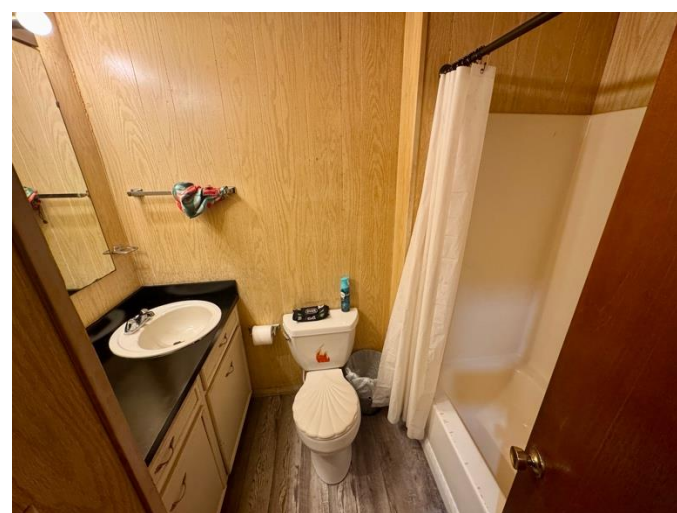
A Real Estate Expert
You Can Trust!

ANTHONY STEEN
REALTOR®
O: 601.898.2772 C: 662.645.5151
Anthony@TomSmithLand.com
TomSmithLandandHomes.com

Tom Smith
LAND AND HOMES
Expect More. Get More.

LandReport
2011-2025
AMERICA'S
BEST
BROKERAGES

Information is believed to be accurate but not guaranteed.



A Real Estate Expert
You Can Trust!

ANTHONY STEEN

REALTOR®

O: 601.898.2772 C: 662.645.5151

Anthony@TomSmithLand.com

TomSmithLandandHomes.com

Tom Smith
LAND AND HOMES

Expect More. Get More.

LandReport
2011-2025
AMERICA'S
BEST
BROKERAGES

Information is believed to be accurate but not guaranteed.



A Real Estate Expert
You Can Trust!

ANTHONY STEEN

REALTOR®

O: 601.898.2772 C: 662.645.5151

Anthony@TomSmithLand.com

TomSmithLandandHomes.com



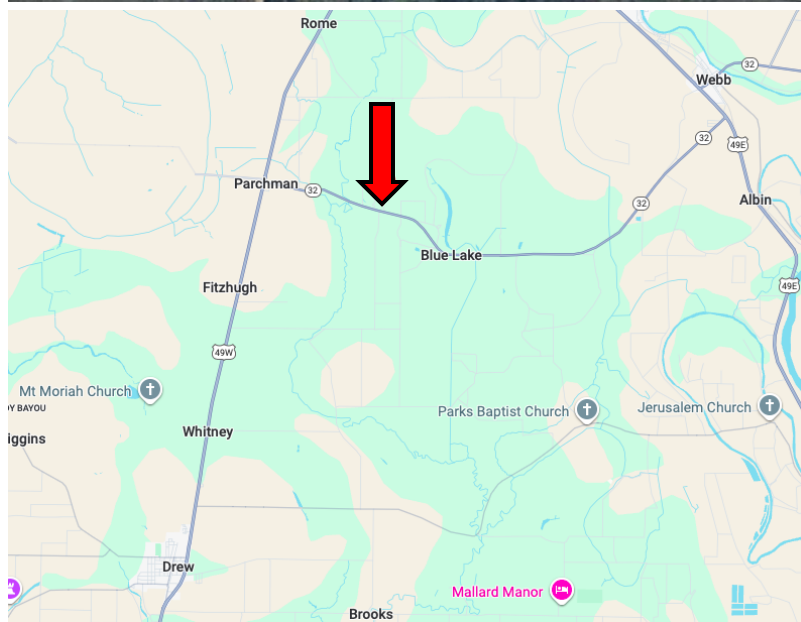
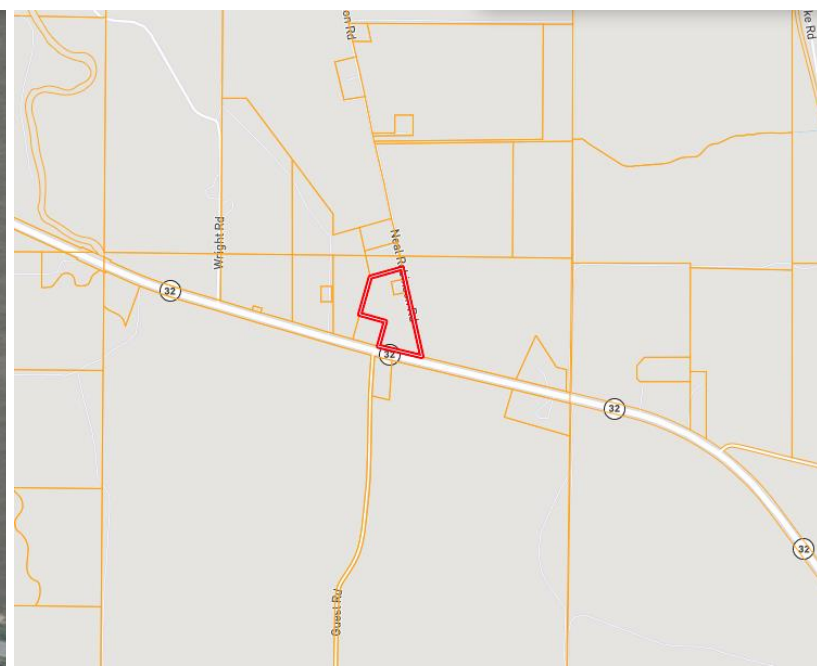
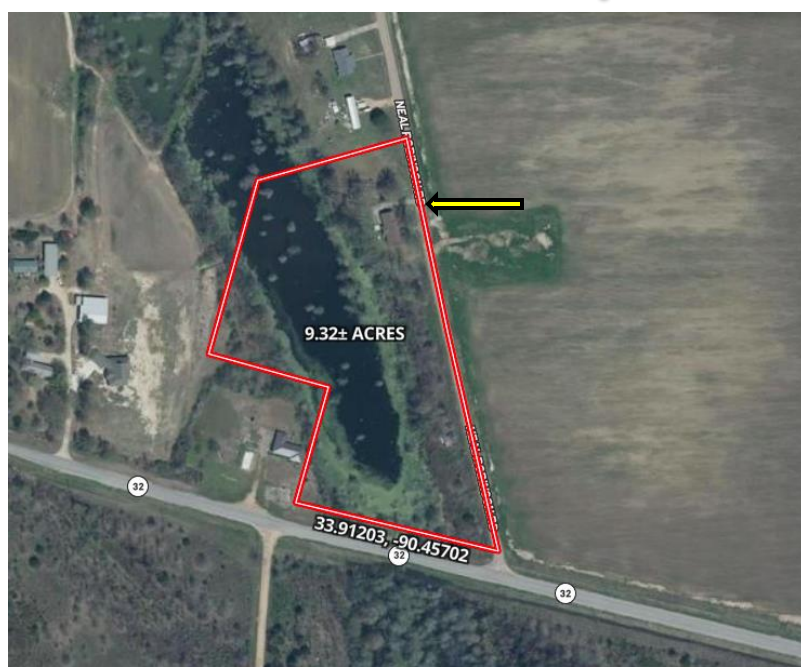
Expect More. Get More.



Information is believed to be accurate but not guaranteed.

MAPS

[Click for the Interactive Map](#)



Address: 17 Neal Robinson Road
Drew, MS 38737

**Directions from Hwy 3 & MS-8,
Ruleville, MS:**

Travel north on Hwy 3 for 13.3 miles.

Turn right onto Hwy 32 E for 2.5 miles. Turn left onto Neal Robinson Road. After 0.2 miles, the home will be on the left. [Google Maps Link](#)



**ANTHONY
STEEN**
REALTOR®

Office: 601.898.2772

Cell: 662.645.5151

Anthony@TomSmithLand.com



Expect More. Get More.

A Real Estate Expert You Can Trust

TomSmithLandandHomes.com

Information is believed to be accurate but not guaranteed.

