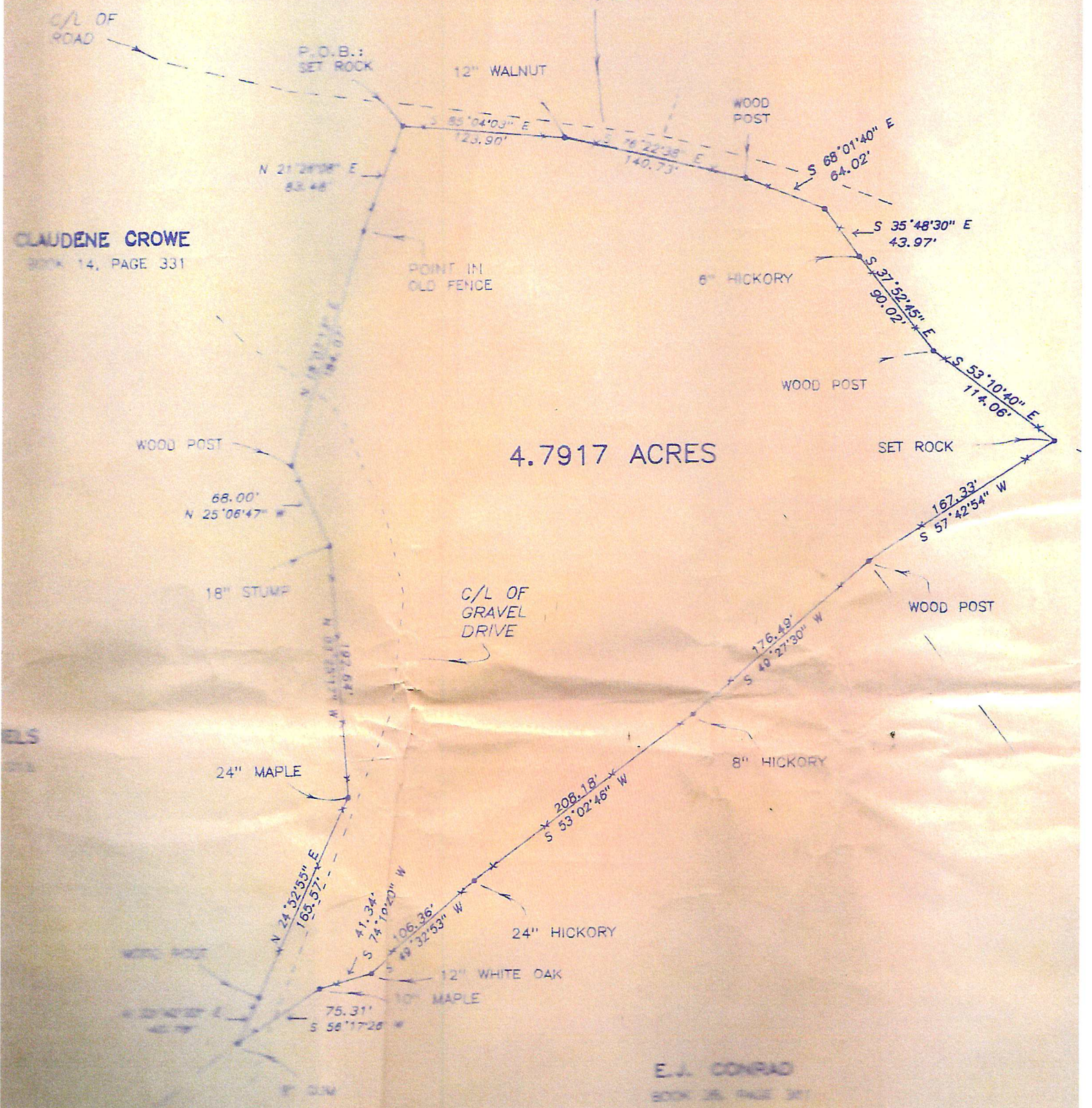


FLETCHER
RIDGE
ROAD

CLAUDENE CROWE
BOOK 14, PAGE 331

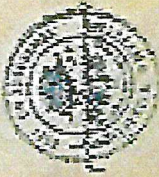
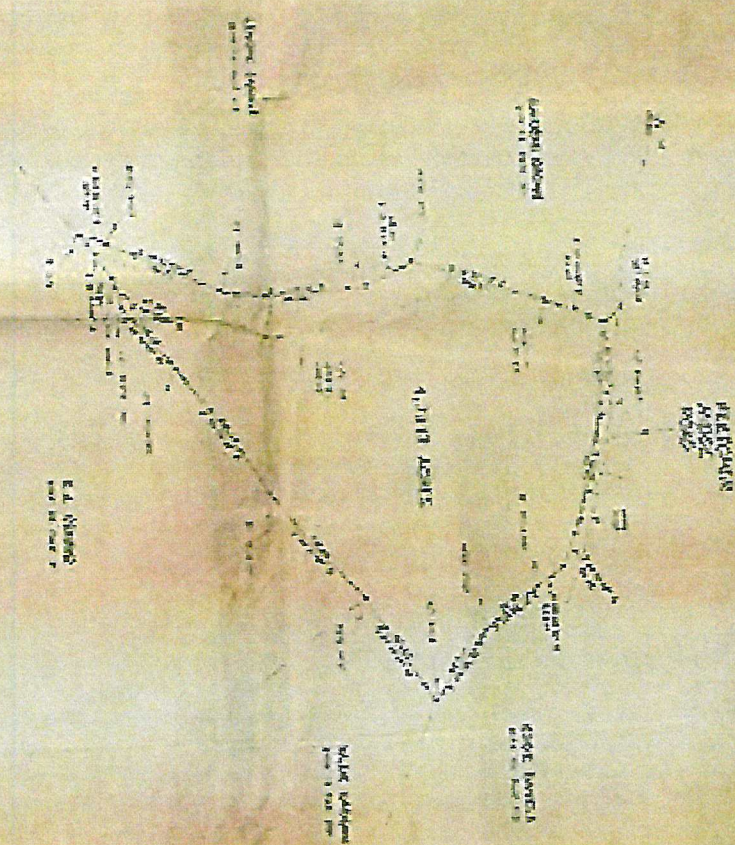
4.7917 ACRES

E.J. CONRAD
BOOK 26, PAGE 311

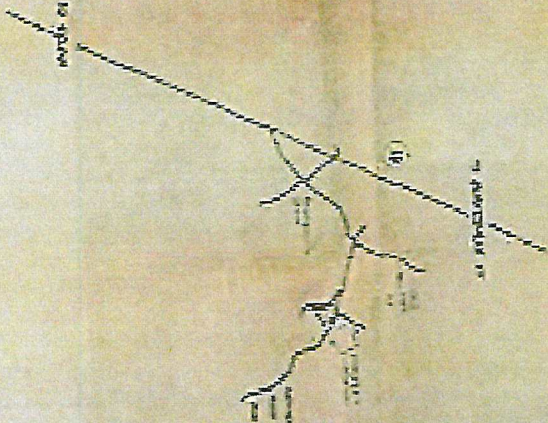




This map was prepared by the
 U.S. Army Corps of Engineers
 from aerial photographs
 taken in 1954.
 William A. J. ...



SCALE 1" = 2000'



ROAD NETWORK AND OTHER FEATURES OF THE AREA	
ROAD TYPE (As shown on map)	ROAD TYPE (As shown on map)
ROAD TYPE (As shown on map)	ROAD TYPE (As shown on map)
ROAD TYPE (As shown on map)	ROAD TYPE (As shown on map)
ROAD TYPE (As shown on map)	ROAD TYPE (As shown on map)