

19.5± ACRES
KEMPER COUNTY, MS
\$39,000



SMALLTOWN
HUNTING PROPERTIES
& REAL ESTATE

OFFICE (769) 760-0005 | WWW.SMALLTOWNPROPERTIES.COM

THE KEMPER 19.5

PROPERTY PROFILE

LOCATION:

- Bloomfield Road
Preston, MS 39354
- Access via Deeded Easement
- Kemper County
- 3.5± Miles N of Kemper Lake
- 11.7± Miles NW of DeKalb
- 28.3± Miles SE of Louisville
- 42.4± Miles N of Meridian

COORDINATES:

- 32.8602, -88.7504

PROPERTY USE:

- Hunting
- Recreational
- Timber Investment

PROPERTY INFORMATION:

- 19.5± Total Acres
- 7± Acres of Bottomland
- Mixed Timber
- Deer/Turkey/Small Game

TAX INFORMATION:

- Parcel 039-27-15.000
- 2025 Taxes: \$53.90



SMALLTOWN
HUNTING PROPERTIES
& REAL ESTATESM

DEREK EAVES

LAND SPECIALIST

C: 662-803-2001

O: 769-760-0005

derek@smalltownproperties.com

2121 5th St., Suite 206 - Meridian, MS 39301

smalltownproperties.com

Information is believed to be accurate but not guaranteed.

WELCOME TO THE KEMPER 19.5

WELCOME TO THE KEMPER 19.5 IN PRESTON, MISSISSIPPI. This 19.5± acre tract in Kemper County is the kind of place where you can slip away from the hustle and enjoy a little peace and quiet. Located just 3.5± miles north of Kemper Lake, this property features naturally regenerated pines and mixed hardwoods with approximately 7± acres of bottomland that provide excellent habitat for deer, turkey, and other small game. Access is provided by a deeded easement from Bloomfield Road, giving the property a private, off-the-beaten-path feel that's hard to come by these days.

Whether you're looking for a hunting spot to call your own, a place to spend weekends outdoors, or a tract to tuck away as a timber investment, this property has plenty to offer. The mix of young timber, thick cover, and bottomland creates a setup that wildlife naturally gravitates to, and there's plenty of room to make it fit your vision.

Conveniently located 11.7± miles northwest of DeKalb, 28.3± miles southeast of Louisville, and 42.4± miles north of Meridian, this is a good, honest piece of East Mississippi ground with all the makings of a place you'll enjoy for years to come.

Contact Derek Eaves today to schedule a private showing and experience #TheSmallTownWay.



SMALLTOWN
HUNTING PROPERTIES
& REAL ESTATESM

DEREK EAVES

LAND SPECIALIST

C: 662-803-2001

O: 769-760-0005

derek@smalltownproperties.com

2121 5th St., Suite 206 - Meridian, MS 39301

smalltownproperties.com

Information is believed to be accurate but not guaranteed.

19.5± ACRES

KEMPER COUNTY, MISSISSIPPI



SMALLTOWN
HUNTING PROPERTIES
& REAL ESTATESM

DEREK EAVES

LAND SPECIALIST

C: 662-803-2001

O: 769-760-0005

derek@smalltownproperties.com

2121 5th St., Suite 206 - Meridian, MS 39301

smalltownproperties.com

Information is believed to be accurate but not guaranteed.

19.5± ACRES

KEMPER COUNTY, MISSISSIPPI



SMALLTOWN
HUNTING PROPERTIES
& REAL ESTATESM

DEREK EAVES

LAND SPECIALIST

C: 662-803-2001

O: 769-760-0005

derek@smalltownproperties.com

2121 5th St., Suite 206 - Meridian, MS 39301

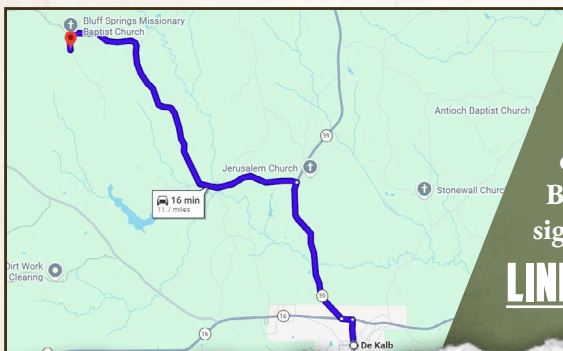
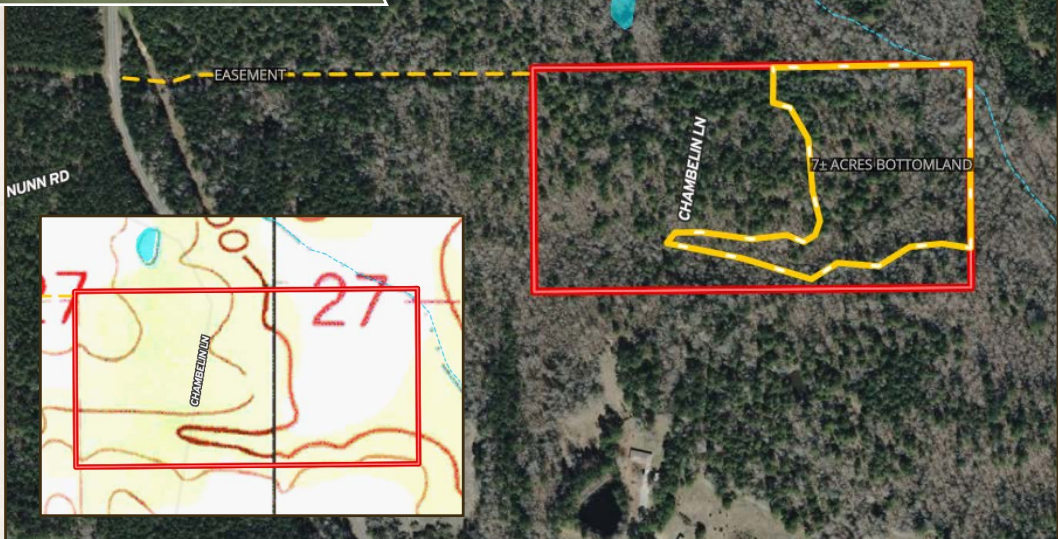
smalltownproperties.com

Information is believed to be accurate but not guaranteed.

19.5± ACRES

KEMPER COUNTY, MISSISSIPPI

land id. LINK



Directions From DeKalb, MS:
 Travel north on MS-39 for 3.3 miles.
 Turn left onto Kellis Store Road and
 continue for 7.2 miles. Turn left onto
 Bloomfield Road, and the property and
 sign will be on the left in 0.4 miles.

[LINK TO GOOGLE MAP DIRECTIONS](#)



SMALLTOWN
 HUNTING PROPERTIES
 & REAL ESTATESM

DEREK EAVES

LAND SPECIALIST

C: 662-803-2001

O: 769-760-0005

derek@smalltownproperties.com

2121 5th St., Suite 206 - Meridian, MS 39301

smalltownproperties.com

Information is believed to be accurate but not guaranteed.