

Charming Home in Cleveland, MS

Bolivar County

412 S Victoria Ave, Cleveland, MS 38732



\$190,000



**Tom
Smith
LAND AND
HOMES**

Expect More. Get More.

Property Information

Location:

- 2 Minutes to Downtown Cleveland, MS (0.6 Miles)

Property Use:

- Residential

Coordinates:

- 33.73805, -90.72745

Property Highlights

- 0.27± Acres
- 3 Bedrooms
- 2 Bathrooms
- 1,952± Sq Ft
- Built in 1955
- Covered 1 Car Carport
- Bonus Room
- Fenced In Backyard
- Shed
- Deck



Expect More. Get More.

**ANTHONY
STEEN**

ALC®, REALTOR®

Office: 601.898.2772

Cell: 662.645.5151

Anthony@TomSmithLand.com

**A Real Estate Expert
You Can Trust!**



The Residence

1,952± Sq Ft

Charming home located at 412 S Victoria Avenue in Cleveland, Bolivar County. This residence features three bedrooms and two bathrooms, along with a bonus room, providing a total of 1,952± square feet of heated and cooled living space. The kitchen offers ample cabinet and counter space, along with stainless steel appliances. The home includes two cozy living spaces, both equipped with fireplaces, making them perfect for relaxation. The bonus room is versatile and can serve as an office, a kids' play area, or a storage area for extra belongings. Outside, you'll find a covered one-car carport, a fenced-in backyard complete with a shed, and a deck ideal for grilling and enjoying time with friends and family, all situated on a 0.27± acre lot. Call Anthony Steen today to schedule a private tour of this incredibly charming home!



**ANTHONY
STEEN**

ALC®, REALTOR®

Office: 601.898.2772

Cell: 662.645.5151

Anthony@TomSmithLand.com



Expect More. Get More.

The Residence



**ANTHONY
STEEN**

ALC®, REALTOR®

Office: 601.898.2772

Cell: 662.645.5151

Anthony@TomSmithLand.com



Expect More. Get More.

The Residence



**ANTHONY
STEEN**

ALC®, REALTOR®

Office: 601.898.2772

Cell: 662.645.5151

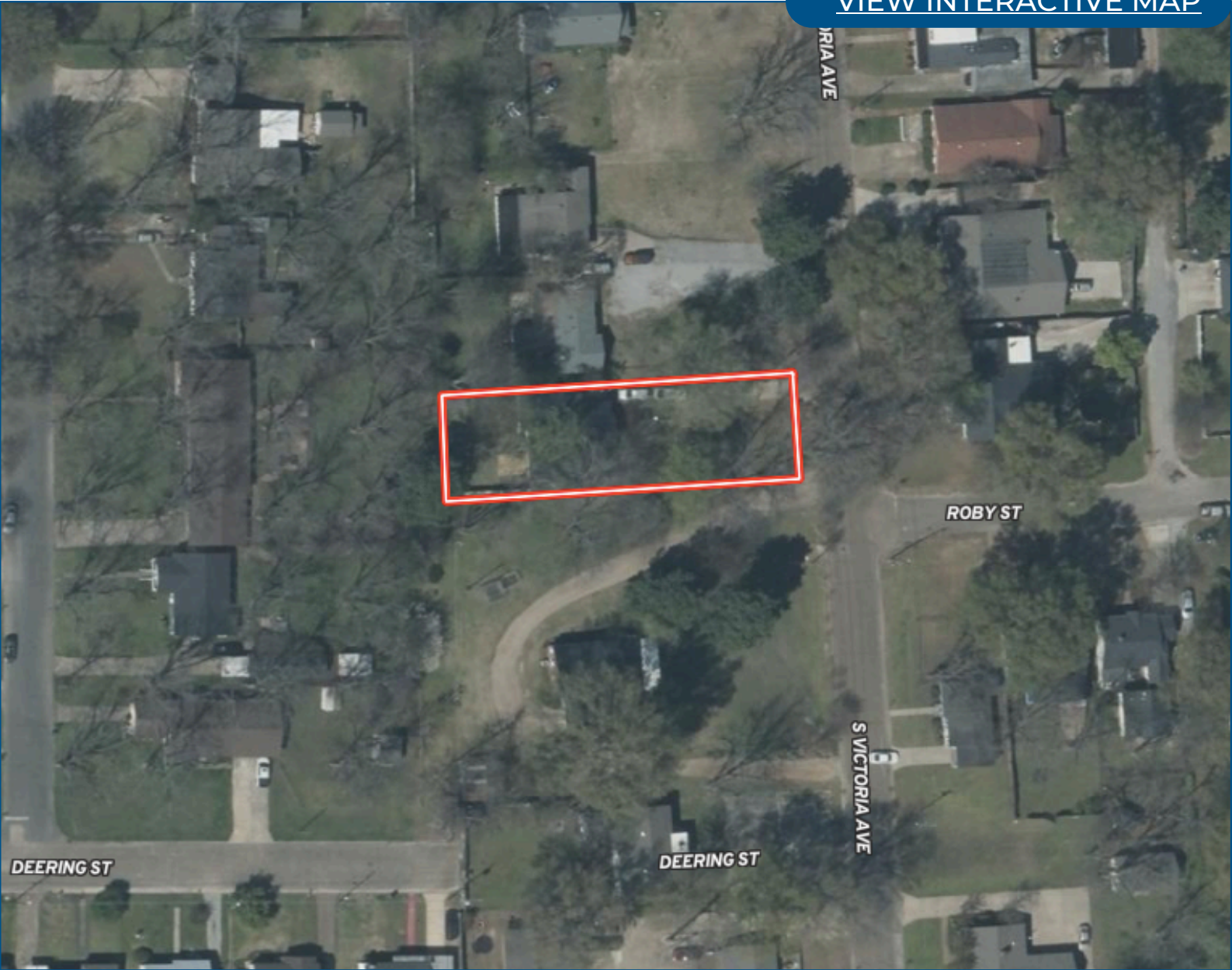
Anthony@TomSmithLand.com



Expect More. Get More.

Aerial Map

[VIEW INTERACTIVE MAP](#)



**ANTHONY
STEEN**

ALC®, REALTOR®

Office: 601.898.2772

Cell: 662.645.5151

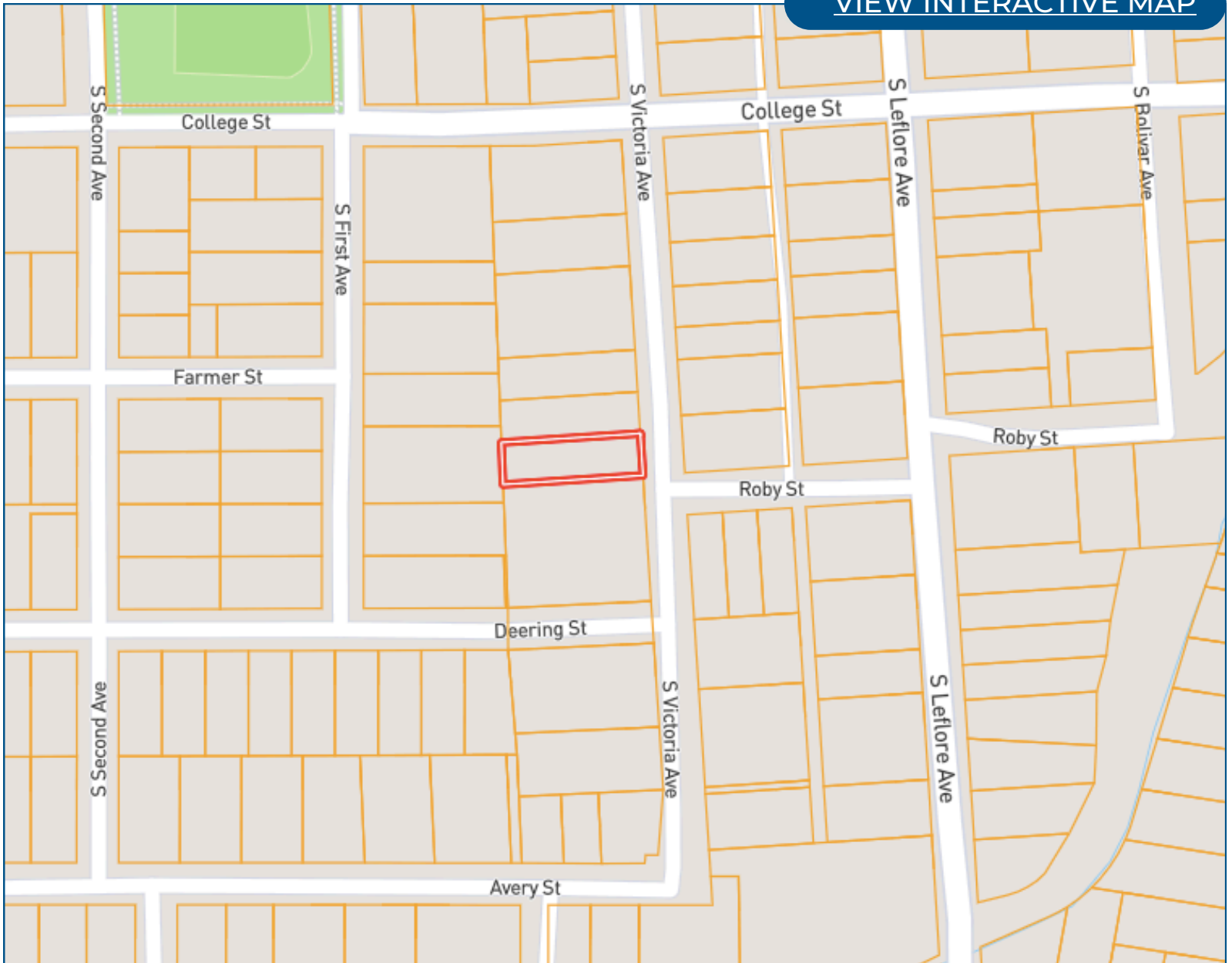
Anthony@TomSmithLand.com



Expect More. Get More.

Ownership Map

[VIEW INTERACTIVE MAP](#)



**ANTHONY
STEEN**

ALC®, REALTOR®

Office: 601.898.2772

Cell: 662.645.5151

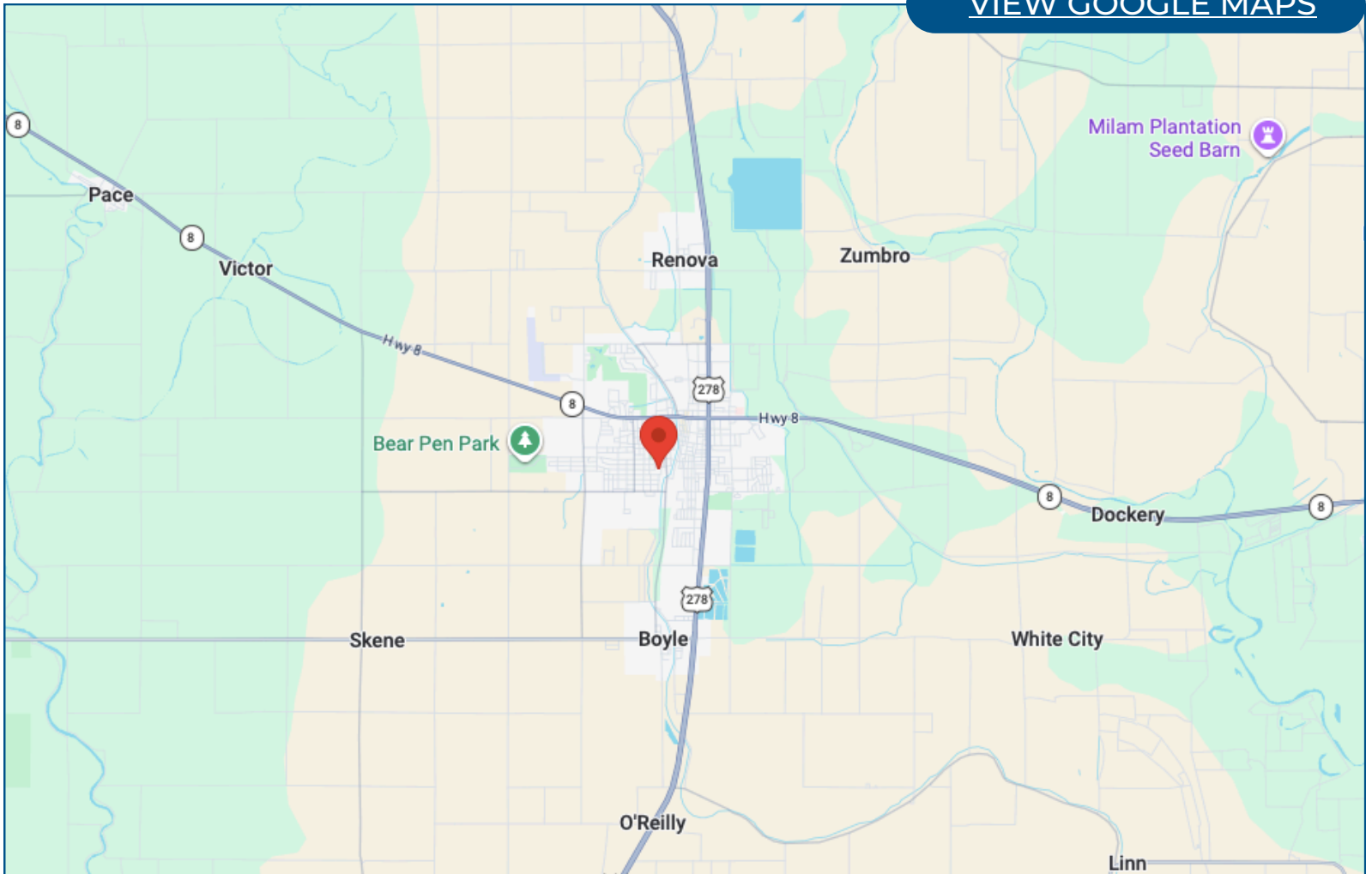
Anthony@TomSmithLand.com



Expect More. Get More.

Directional Map

[VIEW GOOGLE MAPS](#)



Directions from US-61 & MS-8, Cleveland, MS 38732

Travel south on Hwy 61 for 0.6 miles. Turn right onto Lee Street for 0.4 miles, then continue onto College Street for 0.2 miles. Turn left onto S Victoria Ave. After 440 feet, the house will be on the right.

**ANTHONY
STEEN**

ALC®, REALTOR®

Office: 601.898.2772

Cell: 662.645.5151

Anthony@TomSmithLand.com



Expect More. Get More.

Listing Agent



Anthony Steen

ALC, Realtor & Land Specialist

Anthony was born in Bolivar County, but his family moved shortly after to Clarksdale, MS. He spent his primary educational and athletic years attending and playing sports at Lee Academy. As a child, he played baseball, football, basketball, soccer and even threw shot put and disc for track. After graduating in 2009, Anthony continued his education and athletic career for the next five years at the University of Alabama on a football scholarship. He majored in Health Environmental Science and completed his bachelor's degree and was a part of two SEC Championship and three National Championship teams with the Crimson Tide. After college, Anthony played for the Arizona Cardinals and the Miami Dolphins in the National Football League for 4 years until he decided to retire and come back to the Mississippi Delta where he grew up.

Growing up, Anthony was an avid hunter and fisherman who loved spending time helping his grandfather on the farm growing cotton and soybeans. His father and grandfather helped instill the importance of and a love for taking care of the land and wildlife around him. He enjoys all types of hunting from deer, duck, and turkey, to hogs, frogs, and pheasant. After retiring from the NFL, Anthony knew he wanted to come back home to the land he loved so much as a child.

Anthony currently resides in Tallahatchie County where he farmed soybeans with his family for a few years. After much deliberation and praying, Anthony knew it was time to start a new career path. He was certain he wanted to find a way to share his passion for the outdoors with others while staying true to his country roots. As a college athlete, Anthony learned hard work, dedication, discipline, trust, and how to work with others. These traits along with Anthony's personality, honesty, and knowledge of the land make him the perfect agent for you.

OFFICE: 601.898.2772

CELL: 662.645.5151

Anthony@TomSmithLand.com

**CALL ANTHONY STEEN
TODAY!**

