

# 20,000 Bushel Grain Storage

4325 Vaughan Road

Yazoo County, Vaughan, MS



**\$500,000**



**Tom  
Smith  
LAND AND  
HOMES**

Expect More. Get More.

[TomSmithLandandHomes.com](http://TomSmithLandandHomes.com)

662-771-1101

# Property Information

## Location:

- 4325 Vaughan Road, Vaughan, MS

## Coordinates:

- 32,79309,-90.1408

## Property Use:

- 4-50,000 Bushel Grain Bins with Loop System

# Property Highlights

- 2.2± Acres Verified with Survey
- 4-50,000 Bushel Grain Bins
- Loop System
- Gravel Drive with Concrete Dive Over Dump



**BRUCE WEST** ASSOCIATE BROKER, ALC®  
O: 662.771.1101 | C: 662.873.3007  
Bruce@TomSmithLand.com



**JAMIE PEASTER** REALTOR®  
O: 601.898.2772 | C: 662.571.7824  
Jamie@TomSmithLand.com

**Expect More. Get More.**

**TomSmithLandandHomes.com**

*The Real Estate Experts You Can Trust!*

Information is believed to be accurate but not guaranteed.



# The Property

## 2.2± Acres

Four 50,000-bushel GSI grain bins with a loop system situated on approximately 2.05 acres, located 17.5 miles east of Yazoo City, Mississippi. The first three bins were constructed in 2002, with the fourth added in 2009. The property features a gravel drive and a concrete drive-over dump. The bins are conveniently located 5.8 miles west of I-55 on Vaughan Road and offer excellent access to major grain markets—62 miles to Morton, MS, 70 miles to Crystal Springs, MS, and 57 miles to Bolton, MS. The Mississippi River at Vicksburg is only 65 miles away. This well-maintained property presents a great opportunity for grain storage near ready markets, helping protect crops from harvest-time delivery delays and the typical price depression at harvest. Priced at only \$2.75 per bushel, this offering is at great value for farmers looking to get the most bang for their buck. The property also includes a shop converted from an old cotton gin and additional sheds, which may be purchased separately.



**BRUCE WEST**  
ASSOCIATE BROKER, ALC®  
O: 662.771.1101 | C: 662.873.3007  
Bruce@TomSmithLand.com



**JAMIE PEASTER**  
REALTOR®  
O: 601.898.2772 | C: 662.571.7824  
Jamie@TomSmithLand.com

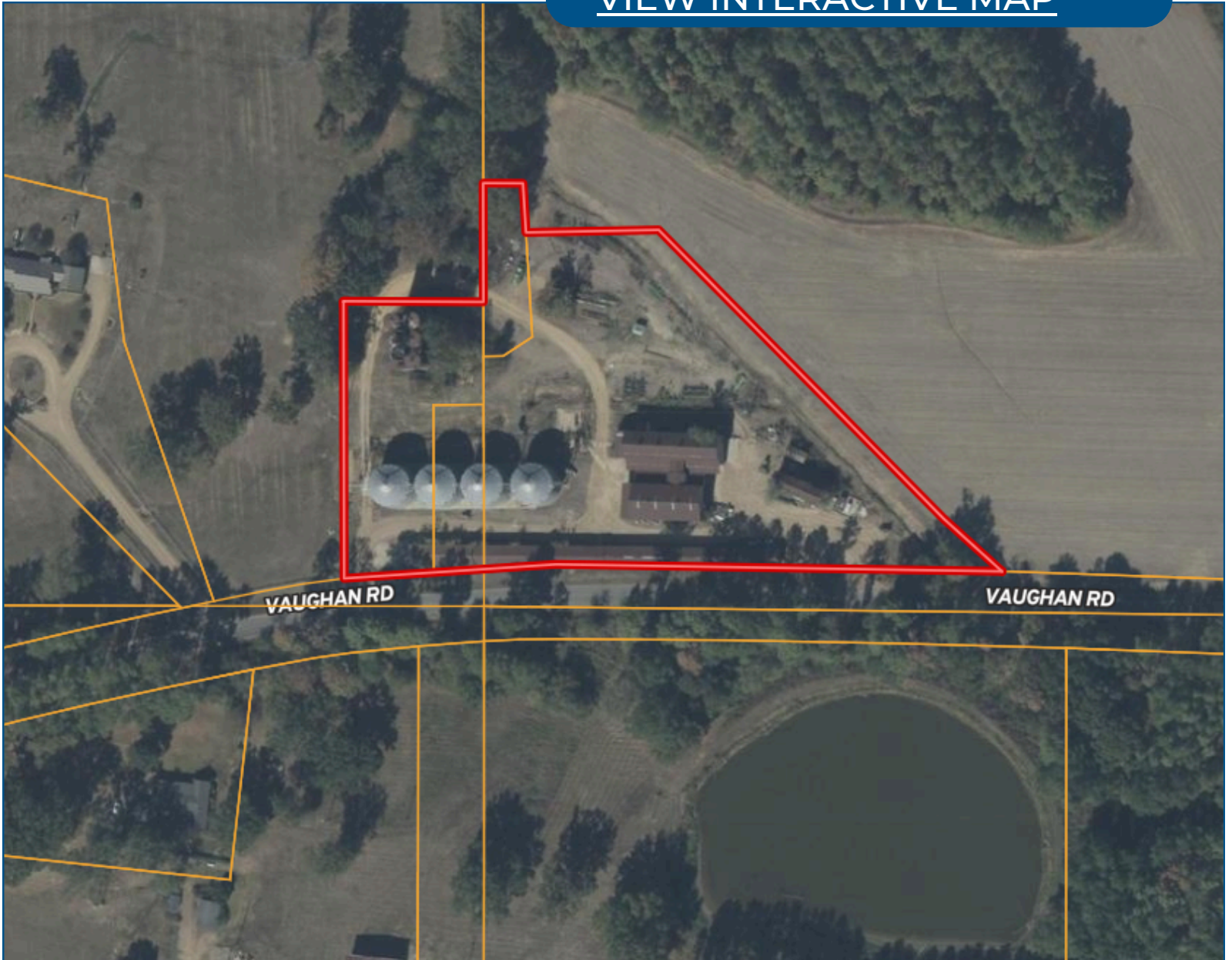
**Expect More. Get More.**

*The Real Estate Experts You Can Trust!*



# Aerial Map

[VIEW INTERACTIVE MAP](#)



**BRUCE WEST**  
ASSOCIATE BROKER, ALC®  
O: 662.771.1101 | C: 662.873.3007  
Bruce@TomSmithLand.com



**JAMIE PEASTER**  
REALTOR®  
O: 601.898.2772 | C: 662.571.7824  
Jamie@TomSmithLand.com

**Expect More. Get More.**

*The Real Estate Experts You Can Trust!*

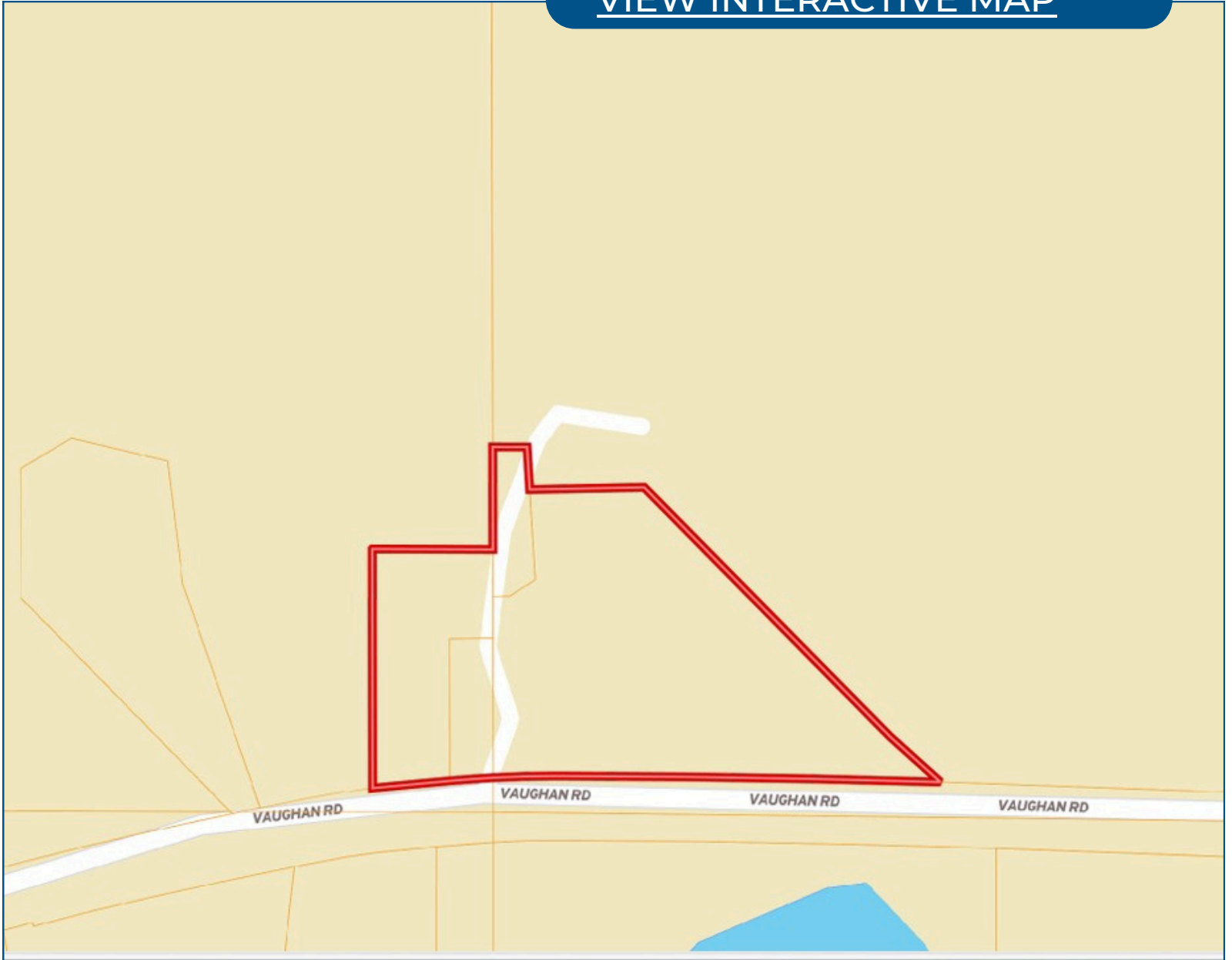


[TomSmithLandandHomes.com](http://TomSmithLandandHomes.com)

Information is believed to be accurate but not guaranteed.

# Ownership Map

[VIEW INTERACTIVE MAP](#)



**BRUCE WEST**  
ASSOCIATE BROKER, ALC®  
O: 662.771.1101 | C: 662.873.3007  
Bruce@TomSmithLand.com

**JAMIE PEASTER**  
REALTOR®  
O: 601.898.2772 | C: 662.571.7824  
Jamie@TomSmithLand.com

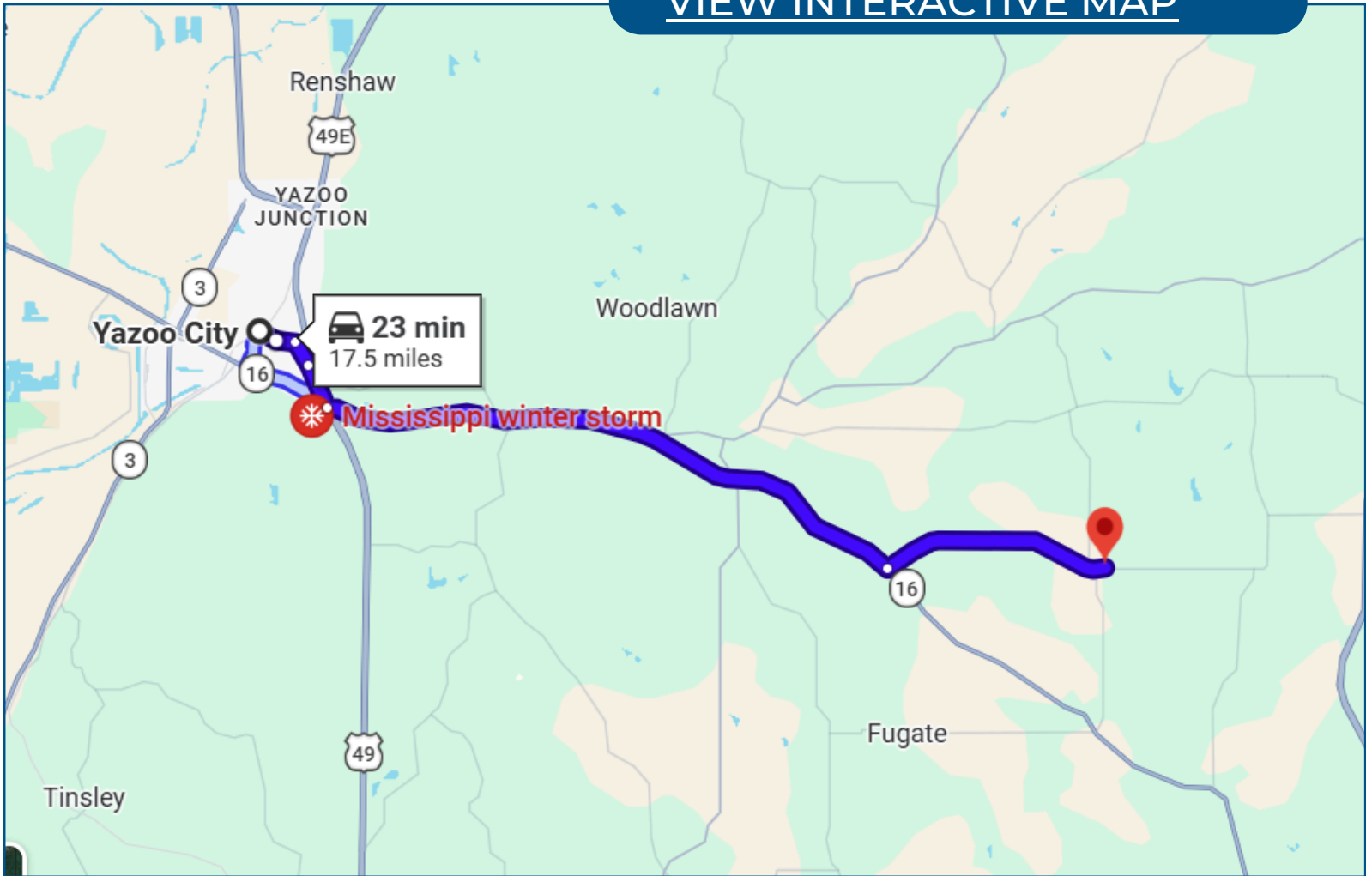
**Expect More. Get More.**

*The Real Estate Experts You Can Trust!*



# Directional Map

[VIEW INTERACTIVE MAP](#)



From the intersection of Grand Avenue and Highway 49S in Yazoo City, MS: Travel South for .9 miles. Turn left onto Highway 16 and go 11.1 miles then turn left onto Vaughan road for 4.4 miles and the destination will be on your left.



**BRUCE WEST**  
ASSOCIATE BROKER, ALC®  
O: 662.771.1101 | C: 662.873.3007  
Bruce@TomSmithLand.com

**JAMIE PEASTER**  
REALTOR®  
O: 601.898.2772 | C: 662.571.7824  
Jamie@TomSmithLand.com

**Expect More. Get More.**

*The Real Estate Experts You Can Trust!*



[TomSmithLandandHomes.com](http://TomSmithLandandHomes.com)

Information is believed to be accurate but not guaranteed.