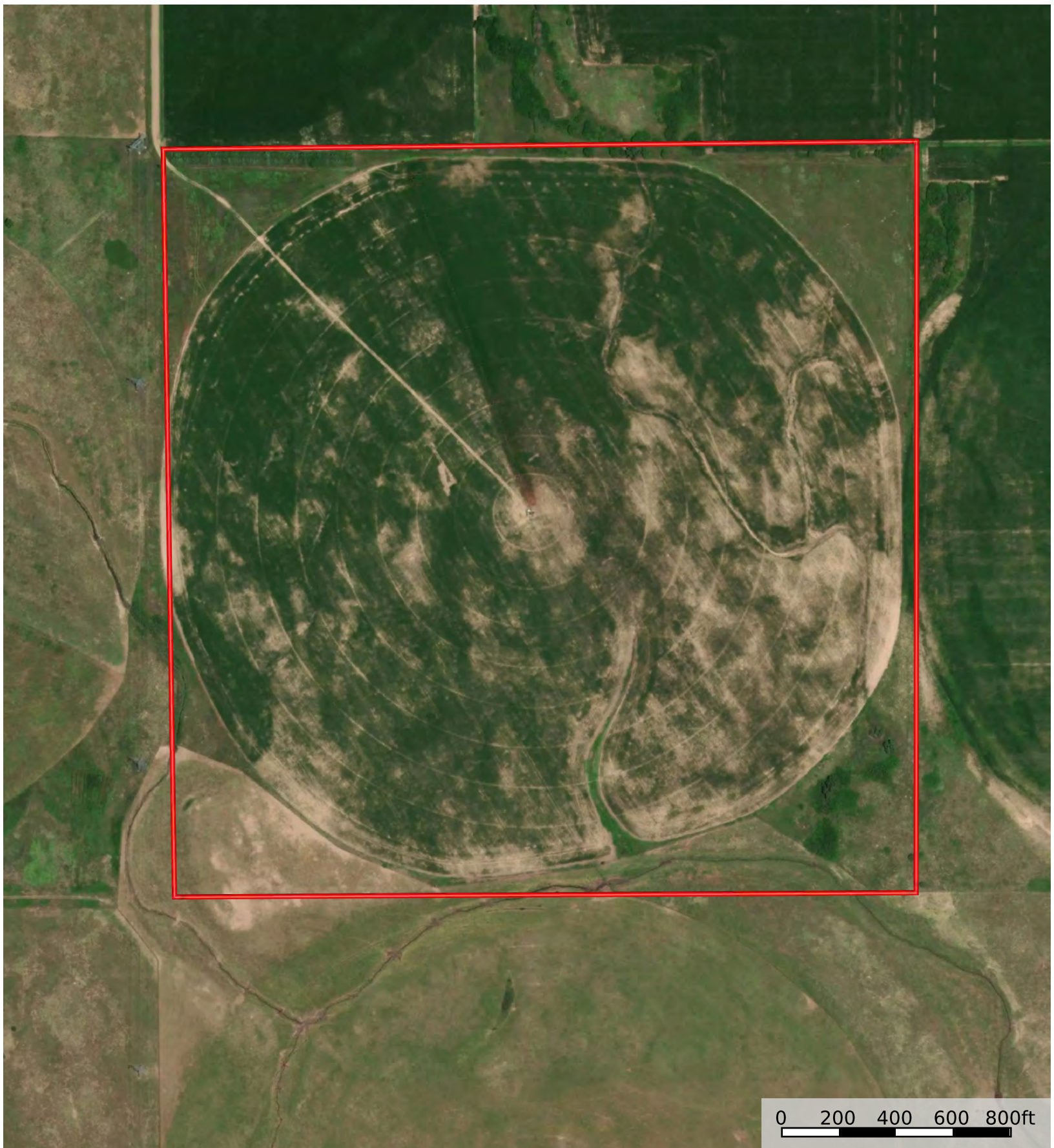
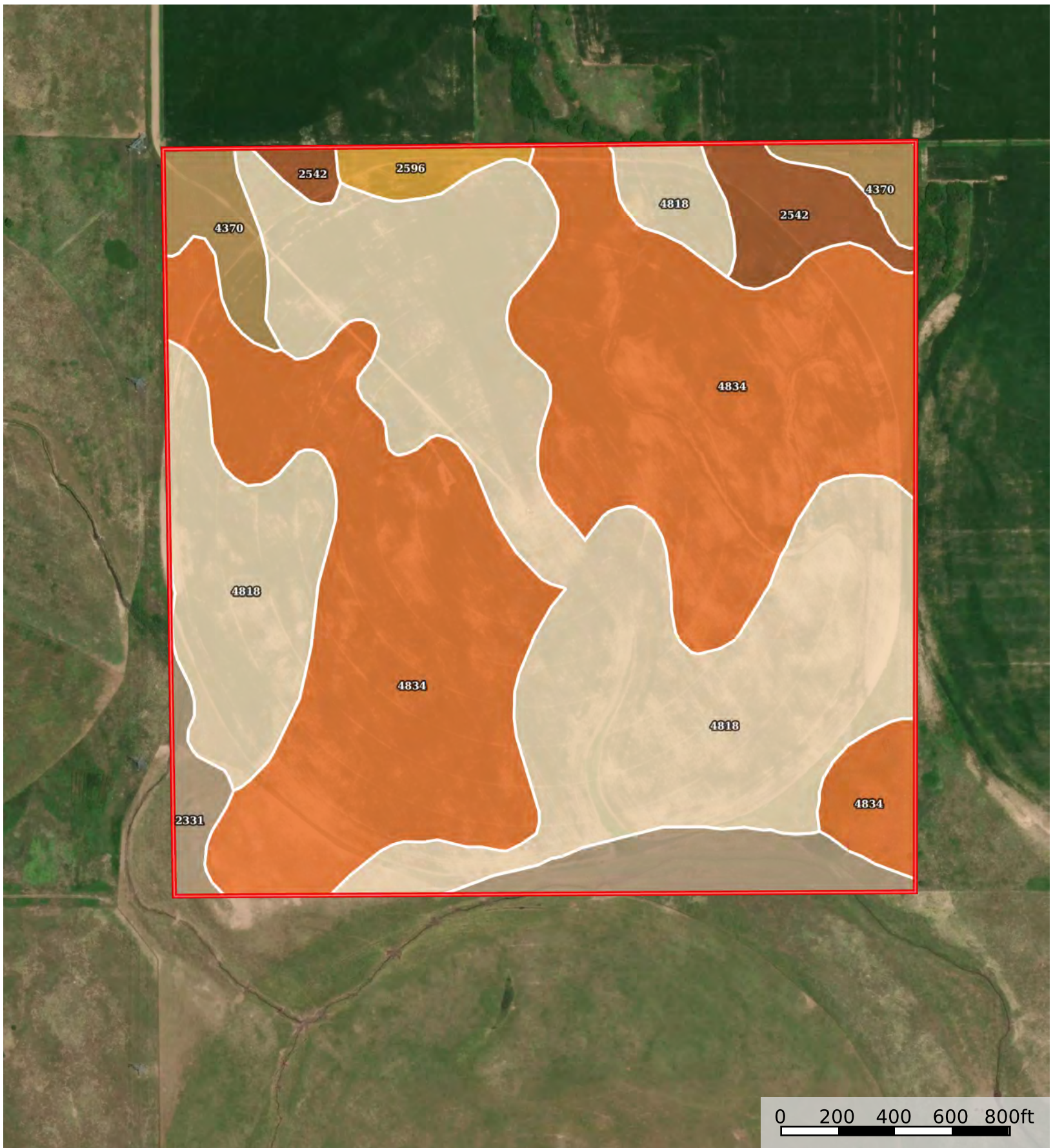



 Boundary





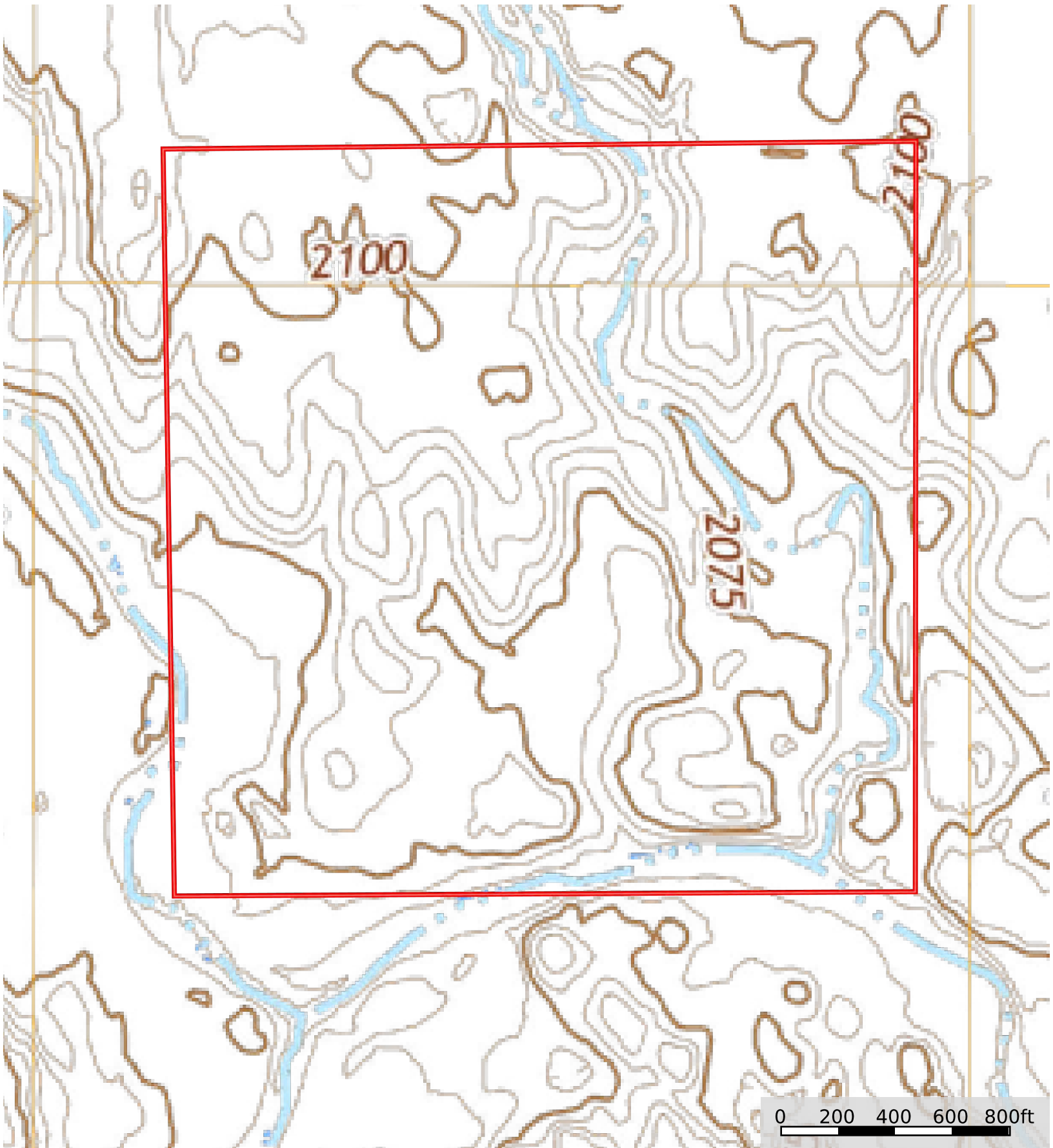
 Boundary

Boundary 157.85 ac

SOIL CODE	SOIL DESCRIPTION	ACRES	%	CPI	NCCPI	CAP
4834	Valentine loamy fine sand, rolling	70.54	44.69	0	25	6e
4818	Valentine loamy fine sand, 3 to 9 percent slopes	65.91	41.76	0	24	6e
2331	Inavale loamy fine sand, rarely flooded	8.21	5.2	0	28	4e
2542	Coly-Kenesaw silt loams, 0 to 3 percent slopes	5.66	3.59	0	70	2e
4370	Libory loamy fine sand, 0 to 3 percent slopes	5.47	3.47	0	46	3e
2596	Hersh fine sandy loam, 3 to 6 percent slopes	2.06	1.31	0	59	3e
TOTALS		157.85(*)	100%	-	27.53	5.61

(\*) Total acres may differ in the second decimal compared to the sum of each acreage soil. This is due to a round error because we only show the acres of each soil with two decimal.





 Boundary