

SILVER MOON RANCH

WALLER COUNTY

26± ACRES | \$1,899,995



SCAN FOR
PROPERTY
TOUR



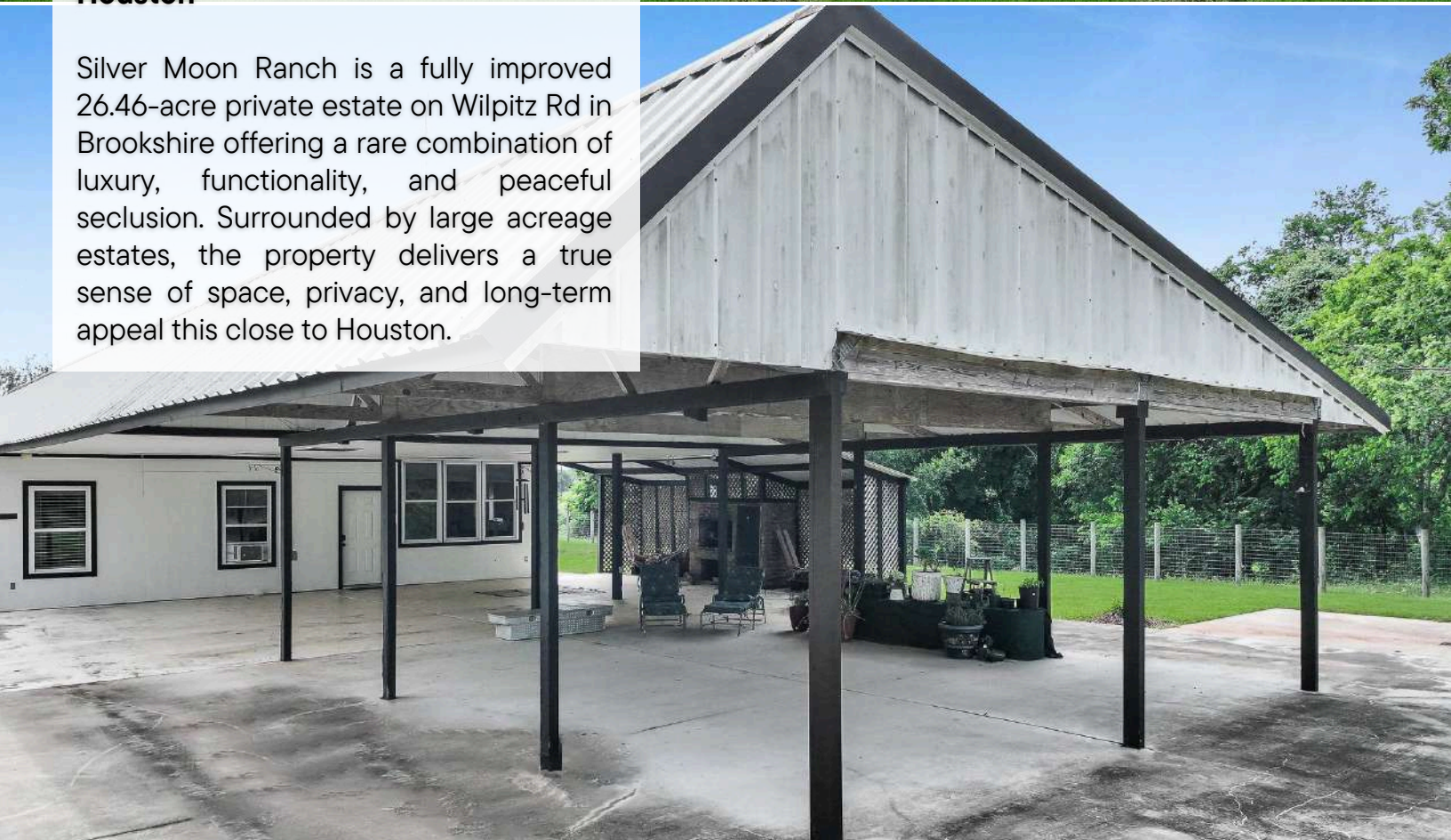
THE INFORMATION PROVIDED HEREIN IS BELIEVED TO BE ACCURATE BUT IS NOT GUARANTEED BY ANDRUS LAND GROUP. DETAILS ARE SUBJECT TO CHANGE AT ANY TIME WITHOUT NOTICE.



PROPERTY DESCRIPTION.

Silver Moon Ranch | 26.46-Acre Turnkey Estate 45 Minutes from Houston

Silver Moon Ranch is a fully improved 26.46-acre private estate on Wilpitz Rd in Brookshire offering a rare combination of luxury, functionality, and peaceful seclusion. Surrounded by large acreage estates, the property delivers a true sense of space, privacy, and long-term appeal this close to Houston.



THE INFORMATION PROVIDED HEREIN IS BELIEVED TO BE ACCURATE BUT IS NOT GUARANTEED BY ANDRUS LAND GROUP. DETAILS ARE SUBJECT TO CHANGE AT ANY TIME WITHOUT NOTICE.



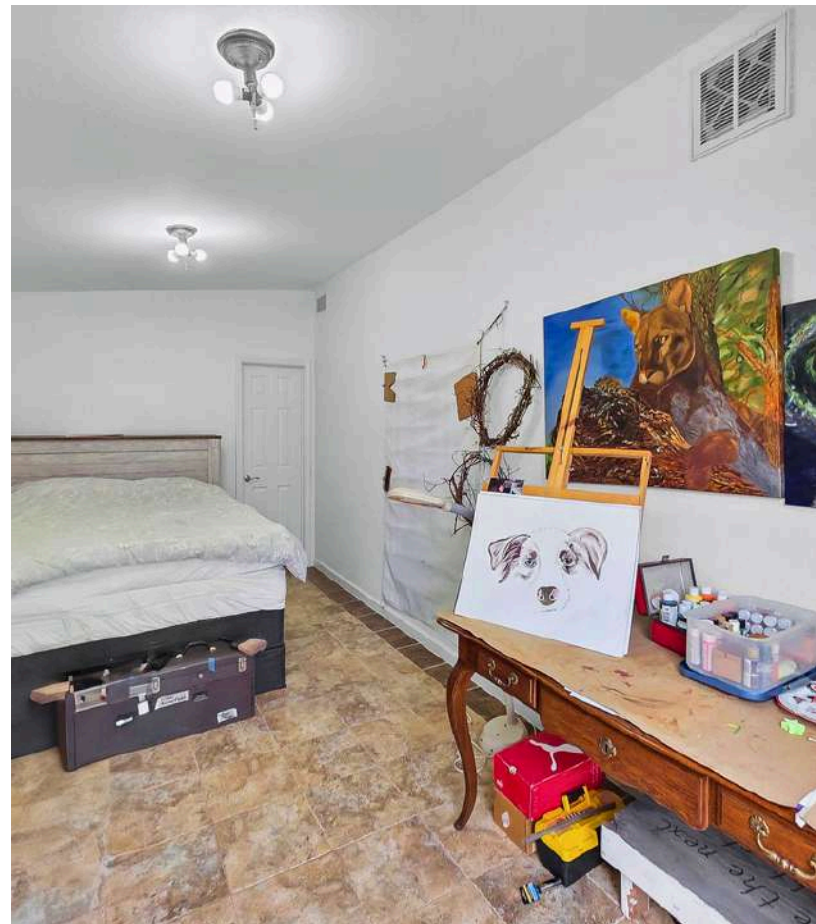
ESTATE LIVING.

At the center of the ranch is a thoughtfully designed 1,752 SF custom ranch residence featuring 3 bedrooms and 3 full bathrooms. The open-concept kitchen, equipped with stainless steel appliances, flows into a spacious living area ideal for everyday living and entertaining.

The primary suite offers a private retreat with a large jacuzzi tub and custom tiled walk-in shower.



THE INFORMATION PROVIDED HEREIN IS BELIEVED TO BE ACCURATE BUT IS NOT GUARANTEED BY ANDRUS LAND GROUP. DETAILS ARE SUBJECT TO CHANGE AT ANY TIME WITHOUT NOTICE.



THE INFORMATION PROVIDED HEREIN IS BELIEVED TO BE ACCURATE BUT IS NOT GUARANTEED BY ANDRUS LAND GROUP. DETAILS ARE SUBJECT TO CHANGE AT ANY TIME WITHOUT NOTICE.



BUILT FOR LIVING, DESIGNED FOR USE.

Silver Moon Ranch is built to function as both a private estate and highly usable ranch:

- 80x40 shop with five automatic roll-up doors, ideal for equipment, vehicles, or a private collection
- 30x40 covered entertaining area/carport with built-in BBQ pit and smoker
- 100+ year-old barn ready for refinishing, offering historic character and restoration potential
- Fully fenced and cross-fenced with wildlife-proof fencing for controlled land use and management



THE INFORMATION PROVIDED HEREIN IS BELIEVED TO BE ACCURATE BUT IS NOT GUARANTEED BY ANDRUS LAND GROUP. DETAILS ARE SUBJECT TO CHANGE AT ANY TIME WITHOUT NOTICE.



THE INFORMATION PROVIDED HEREIN IS BELIEVED TO BE ACCURATE BUT IS NOT GUARANTEED BY ANDRUS LAND GROUP. DETAILS ARE SUBJECT TO CHANGE AT ANY TIME WITHOUT NOTICE.



LAND, WATER & OPPORTUNITY.

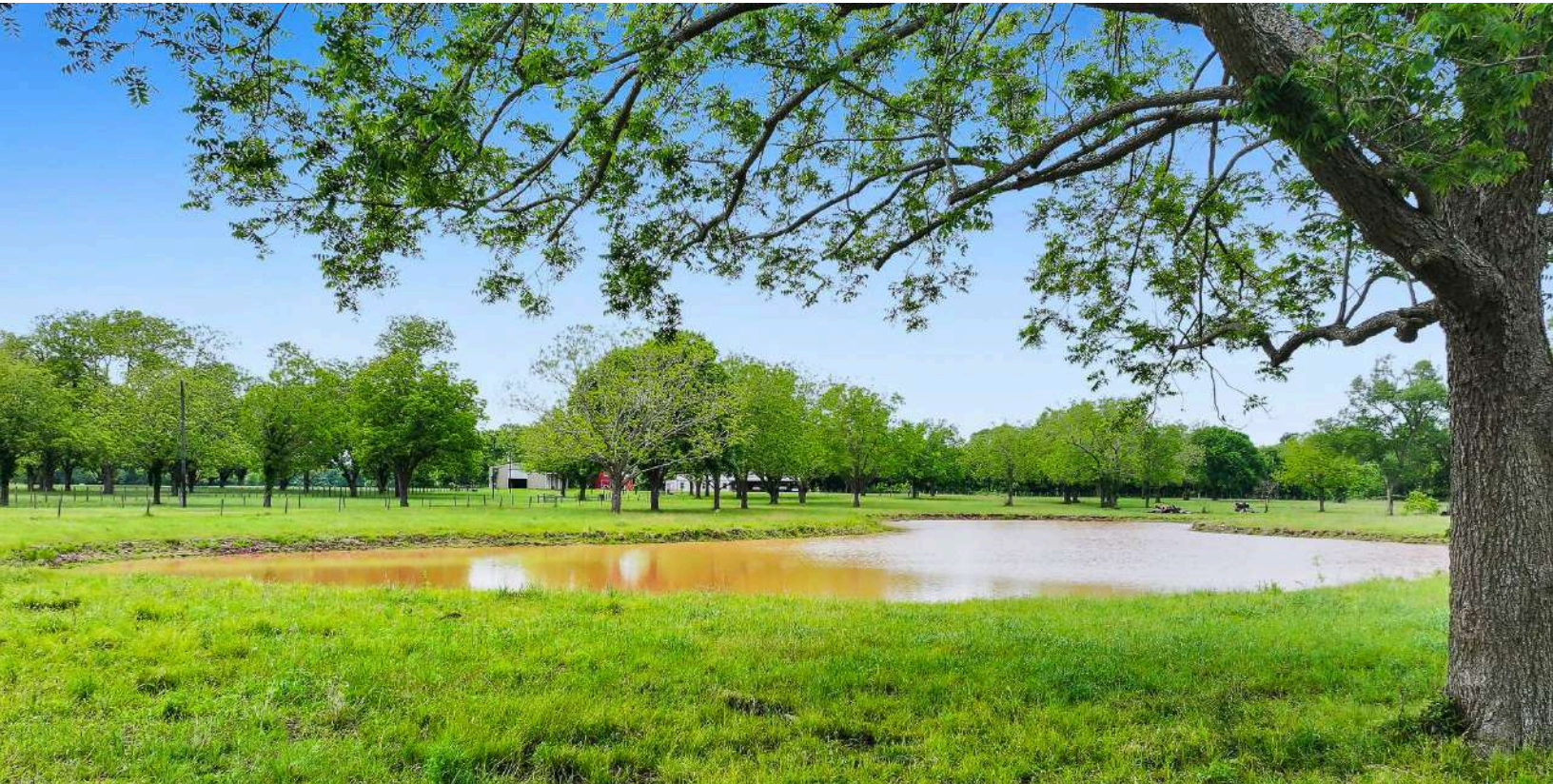
The land offers a balanced mix of open pasture, natural habitat, and future flexibility:

- 42 producing pecan trees
- Large stocked pond for fishing and recreation
- Abundant native wildlife
- Quiet, low-traffic setting
- Several ideal custom home sites positioned throughout the property for expansion, guest homes, or a multi-generational compound

THE INFORMATION PROVIDED HEREIN IS BELIEVED TO BE ACCURATE BUT IS NOT GUARANTEED BY ANDRUS LAND GROUP. DETAILS ARE SUBJECT TO CHANGE AT ANY TIME WITHOUT NOTICE.

1771 WILPITZ RD. BROOKSHIRE, TX 77423

WALLER COUNTY

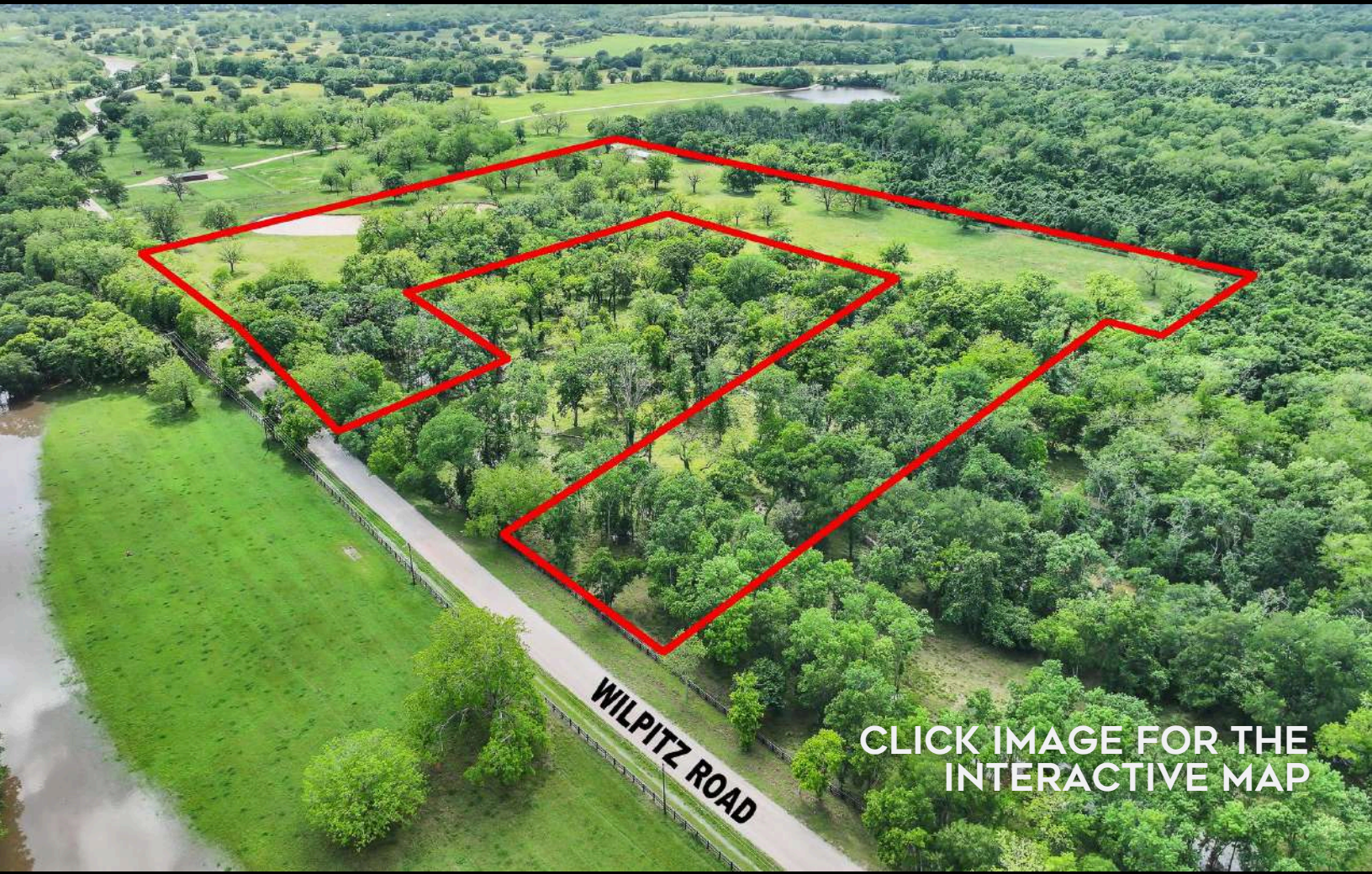


LOCATION.

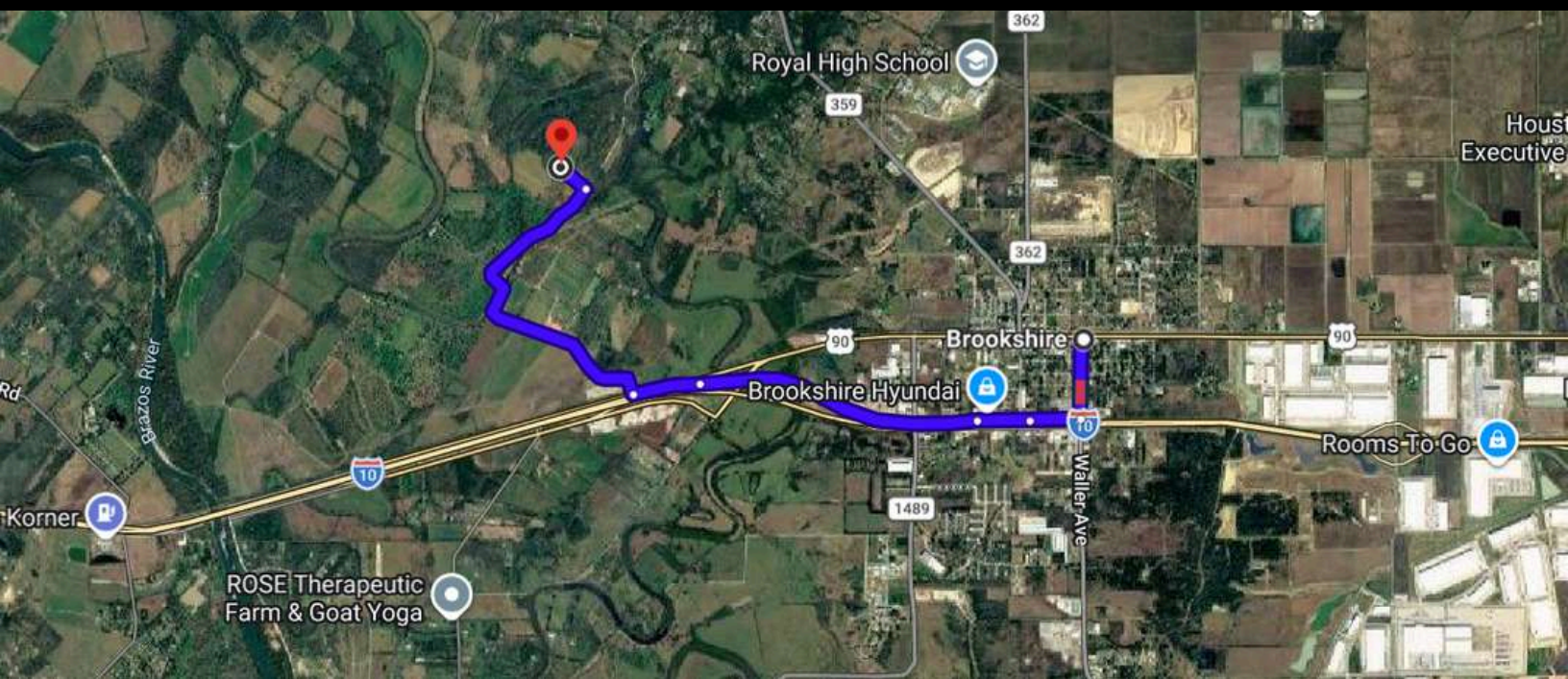
Located just minutes from Brookshire Polo Club and Hemi Hideout, Silver Moon Ranch sits among some of the area's most distinctive and high-end rural properties.

- Approximately 5 minutes to Brookshire Polo Club and Hemi Hideout
- Approximately 45 minutes to Houston
- Convenient access to major corridors while maintaining privacy and seclusion





CLICK IMAGE FOR THE INTERACTIVE MAP

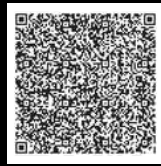


NAVIGATION DIRECTIONS

Take 10W, merge onto US-90W, turn right onto Wilpitz Rd, property is 2 miles down right on the left side.

CHAD ANDRUS, ALC ACCREDITED LAND CONSULTANT

chad@andruslandgroup.com
832-402-9211
www.andruslandgroup.com



ALL MATERIALS AND INFORMATION RECEIVED OR DERIVED FROM ANDRUS LAND GROUP AND ITS DIRECTORS, OFFICERS, AGENTS, ADVISORS, AFFILIATES AND/OR ANY THIRD PARTY SOURCES ARE PROVIDED WITHOUT REPRESENTATION OR WARRANTY AS TO COMPLETENESS, VERACITY, OR ACCURACY, CONDITION OF THE PROPERTY, COMPLIANCE OR LACK OF COMPLIANCE WITH APPLICABLE GOVERNMENTAL REQUIREMENTS, DEVELOPABILITY OR SUITABILITY, FINANCIAL PERFORMANCE OF THE PROPERTY, PROJECTED FINANCIAL PERFORMANCE OF THE PROPERTY FOR ANY PARTY'S INTENDED USE OR ANY AND ALL OTHER MATTERS. NEITHER ANDRUS LAND GROUP, ITS DIRECTORS, OFFICERS, AGENTS, ADVISORS, OR AFFILIATES MAKES ANY REPRESENTATION OR WARRANTY, EXPRESS OR IMPLIED, AS TO ACCURACY OR COMPLETENESS OF THE MATERIALS OR INFORMATION PROVIDED, DERIVED, OR RECEIVED. MATERIALS AND INFORMATION FROM ANY SOURCE, WHETHER WRITTEN OR VERBAL, THAT MAY BE FURNISHED FOR REVIEW ARE NOT A SUBSTITUTE FOR A PARTY'S ACTIVE CONDUCT OF ITS OWN DUE DILIGENCE TO DETERMINE THESE AND OTHER MATTERS OF SIGNIFICANCE TO SUCH PARTY. ANDRUS LAND GROUP WILL NOT INVESTIGATE OR VERIFY ANY SUCH MATTERS OR CONDUCT DUE DILIGENCE FOR A PARTY UNLESS OTHERWISE AGREED IN WRITING. EACH PARTY SHALL CONDUCT ITS OWN INDEPENDENT INVESTIGATION AND DUE DILIGENCE.

Ranch. financing made simple



Anthony Vaughan

NMLS1988136

WINNIE OFFICE

NMLS493828 | 409.400.4066 | capitalfarmcredit.com