

INVESTMENT OPPORTUNITY IN HUMPHREYS COUNTY



111 & 113 E JACKSON STREET
BELZONI, MS 39038 • \$119,500

- 7,800 SF BUILDING
- TWO SEPARATE UNITS
- REAR WAREHOUSE/ STORAGE SPACE
- 3 UPSTAIRS APARTMENTS THAT COULD OFFER POTENTIAL RENTAL INCOME AFTER SOME RENOVATIONS
- HIGH VISIBILITY LOCATION
- SOLD AS IS



**BRUCE
WEST**

ALC®, ASSOCIATE BROKER
ACCREDITED LAND CONSULTANT

Office: 662.441.2500

Cell: 662.873.3007

Bruce@TomSmithLand.com



Expect More. Get More.

A Real Estate Expert You Can Trust

TomSmithLandandHomes.com

Information is believed to be accurate but not guaranteed.





If you're looking for a smart investment that brings in steady income and has room to grow, this mixed-use commercial building in Humphreys County, MS, could be just what you need. Downstairs, you'll find two separate business spaces: one side is a roomy showroom with a kitchen and storage, while the other is set up as a salon with its own bathroom and tanning room. Out back, there's a big warehouse for extra storage and easy deliveries, thanks to the oversized loading door. Upstairs, there are three apartments that, with some renovations, could generate additional rental income, making this property an excellent fit for anyone wanting to invest. It sits right on the main street in Belzoni, so you'll get plenty of drive-by traffic and visibility. With several ways to earn money already set up and room to grow, this place has significant long-term potential. The property is being sold as is. Don't miss out! Call Bruce to schedule your tour today!

A Real Estate Expert
You Can Trust!

BRUCE WEST
REALTOR®

O: 662.441.2500 C: 662.873.3007

Bruce@TomSmithLand.com

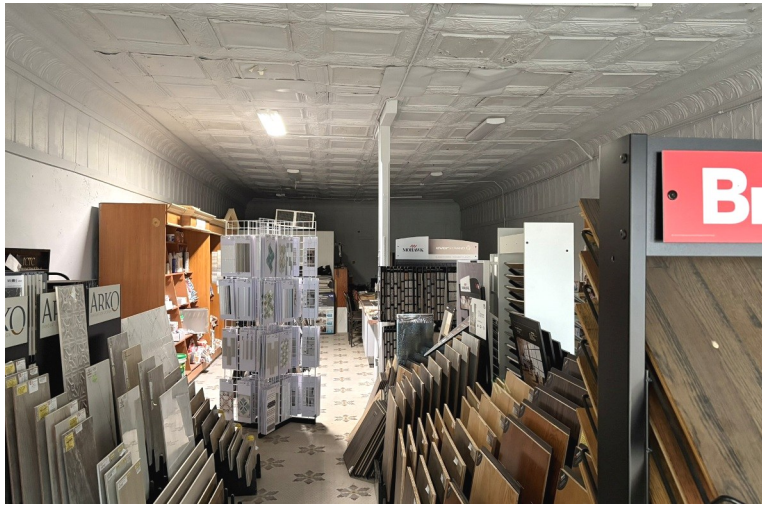
TomSmithLandandHomes.com



Expect More. Get More.



Information is believed to be accurate but not guaranteed.



**A Real Estate Expert
You Can Trust!**

BRUCE WEST

ALC®, ASSOCIATE BROKER
ACCREDITED LAND CONSULTANT

O: 662.441.2500 C: 662.873.3007

Bruce@TomSmithLand.com

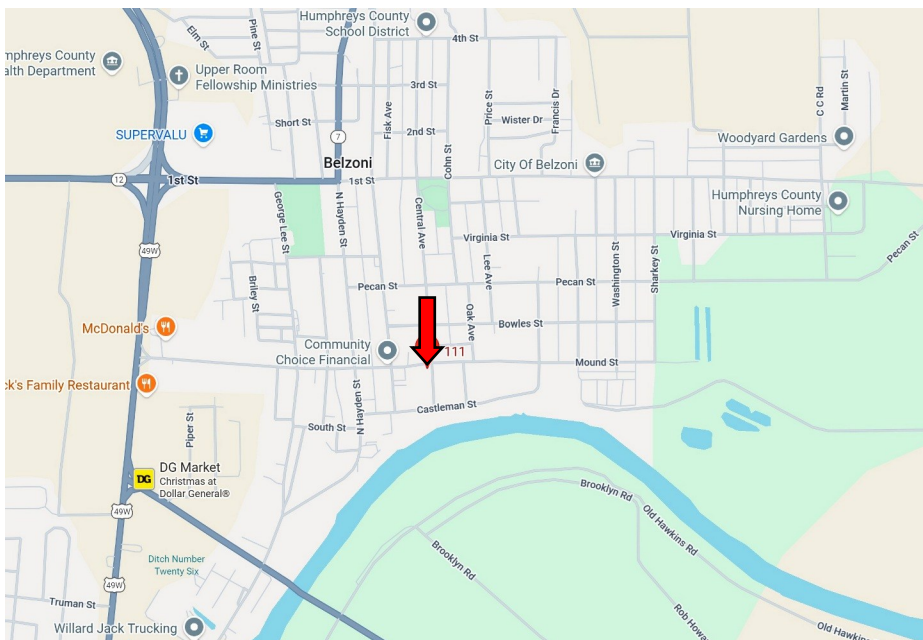
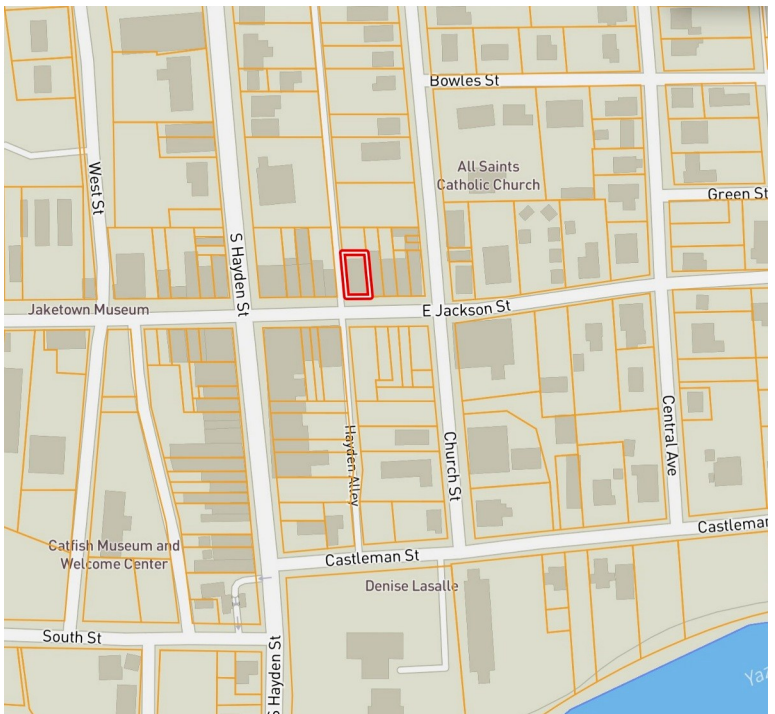
TomSmithLandandHomes.com

**Tom
Smith
LAND AND
HOMES**

Expect More. Get More.

2011-2025
AMERICAN
BEST
BROKERAGES

Information is believed to be accurate but not guaranteed.



land id. [Click Here for the Land id Interactive Map Link](#)

Directions from Hwy 12 E and Hwy 49 W in Belzoni, MS: Travel South on Hwy 49 W for 0.4 miles. Turn left onto W Jackson Street. After 0.5 miles, the property will be on the left, at the corner of E Jackson and Hayden Alley.

**111 & 113 E Jackson Street
Belzoni, MS 39038 [Google Map Link](#)**



**BRUCE
WEST**

ALC®, ASSOCIATE BROKER
ACCREDITED LAND CONSULTANT

Office: 662.441.2500

Cell: 662.873.3007

Bruce@TomSmithLand.com



Expect More. Get More.

A Real Estate Expert You Can Trust

TomSmithLandandHomes.com

Information is believed to be accurate but not guaranteed.

