

LAND FOR SALE



310 ± ACRES | LINCOLN COUNTY, NEBRASKA

White Horse Creek Meadow

Highly productive wet meadow offering high-quality grass hay in a prime location with excellent access.

Zoned Traditional Agriculture, allowing for continued agricultural use, investment potential, or rural residential opportunities - just outside of North Platte city limits.



Jerry Weaver, AFM

LISTING AGENT:

JERRY WEAVER

C: 308.539.4456 | E: Jerry@AgriAffiliates.com

D.J. Lunkwitz, Faith Correll, Don Walker, Mike Polk, Bonnie Downing, Chase Dodson, Bruce Dodson, Kent Richter

Offered exclusively by:



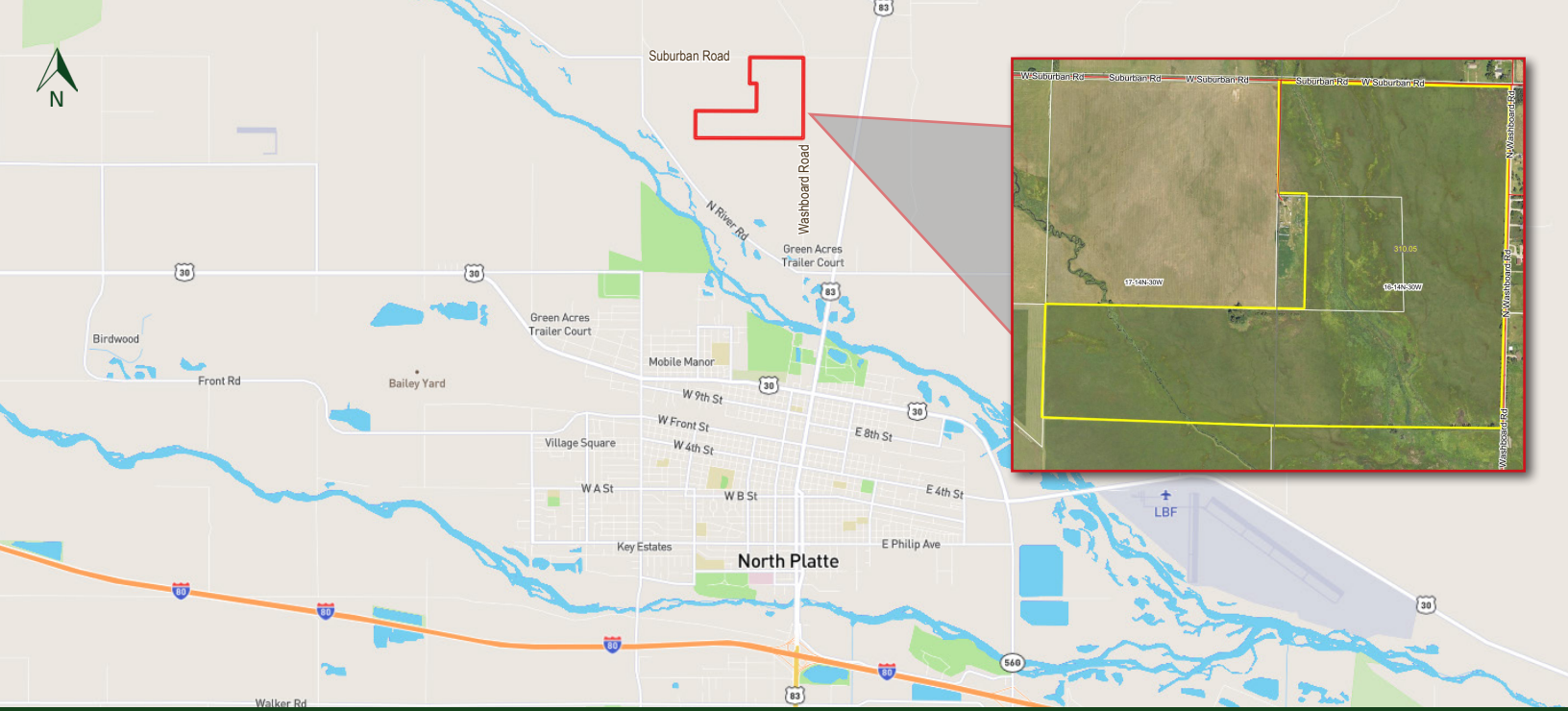
AGRI AFFILIATES®

North Platte, NE • AgriAffiliates.com • 308.534.9240



See Full Online Listing

Information contained herein was obtained from sources deemed reliable. We have no reason to doubt the accuracy, but the information is not guaranteed. Prospective Buyers should verify all information. All maps provided by Agri Affiliates, Inc. are approximations only, to be used as a general guideline, and not intended as survey accurate. As with any agricultural land, this property may include noxious weeds. Agri Affiliates, Inc. and all agents are acting as Agent of the Seller.



LEGAL DESCRIPTION:	NW¼, except for Albrecht outage, N½SW¼ Section 16; N½SE¼ Section 17, Township 14 North, Range 30 West of the 6th P.M. in Lincoln County, Nebraska.
LOCATION & ACCESS:	From North Platte, travel north on U.S. Highway 83 for approximately 3¼ miles. Turn west onto West Suburban Road and continue for ¾ mile. The property is located on the south side of the road. Access is from Suburban Road on the north and Washboard Road on the east.
TAXES & ACRES:	310 ± Tax-assessed acres. Taxes paid in 2025: \$2,586.
LAND USE:	310 acres of wet meadow and wetlands along White Horse Creek. Zoned as Agriculture and Transitional Agriculture.
FENCING:	Perimeter has fair, mostly 3-strand barb wire fence.
POSSESSION:	Possession at closing, subject to lease ending February 28th, 2026.
PRICE:	\$989,000 OR \$3,190 / Taxed Acre!

