

Home in Sunflower County

299 W Shaw Ave

Drew, MS 38737



\$55,000



**Tom
Smith
LAND AND
HOMES**

Expect More. Get More.

Property Information

Location:

- 299 W Shaw Avenue
Drew, MS 39837

Property Use:

- Investment
- Residential

Coordinates:

- 33.81005, -90.53495

Property Highlights

- 0.41± Acres
- 2,320± Square Feet
- 4 Bedrooms, 2.5 Bathrooms
- Convenient Location



JAKE CALLENDER REALTOR®

O: 601.898.2772 | C: 601.955.2559

Jake@TomSmithLand.com

DIAMOND SPILLER REALTOR®

O: 662.441.2500 | C: 636.484.1985

Diamond@TomSmithLand.com

Expect More. Get More.

The Real Estate Experts You Can Trust!

601.898.2772 | TomSmithLandandHomes.com

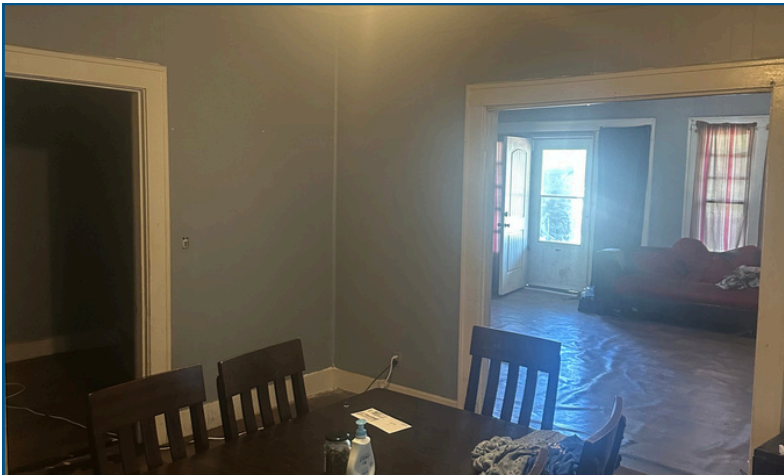
Information is believed to be accurate but not guaranteed.



The Residence

2,320± Sq Ft

This 4-bedroom, 2.5-bath home located in the heart of Drew, MS, offers a great investment opportunity with a highly convenient location. Spanning approximately 2,320± square feet, this property provides ample space and a functional layout ready for your vision. With solid bones and plenty of potential, this home is ideal for investors or buyers looking to renovate and add value. Whether you're considering a rental property or a resale project, the size and location make this a promising option. Don't miss the chance to transform this property into something special—opportunities like this in Drew don't come around often! Call Jake or Diamond today to schedule a showing!



JAKE CALLENDER
REALTOR®
O: 601.898.2772 | C: 601.955.2559
Jake@TomSmithLand.com

DIAMOND SPILLER
REALTOR®
O: 662.441.2500 | C: 636.484.1985
Diamond@TomSmithLand.com

Expect More. Get More.

The Real Estate Experts You Can Trust!

601.898.2772 | TomSmithLandandHomes.com

Information is believed to be accurate but not guaranteed.



The Residence



JAKE CALLENDER
REALTOR®
O: 601.898.2772 | C: 601.955.2559
Jake@TomSmithLand.com



DIAMOND SPILLER
REALTOR®
O: 662.441.2500 | C: 636.484.1985
Diamond@TomSmithLand.com

Expect More. Get More.

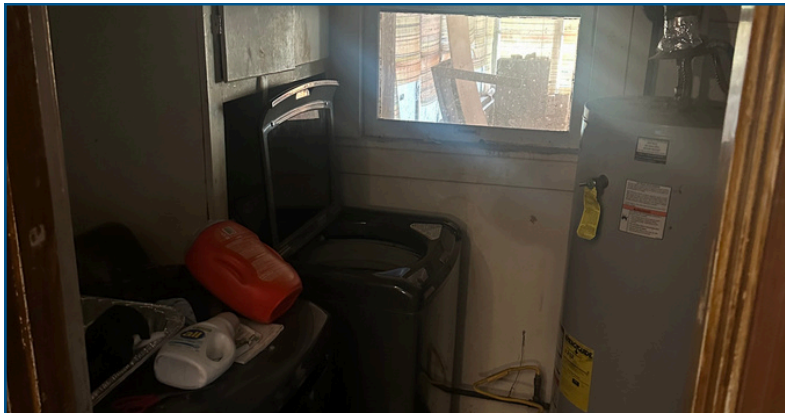
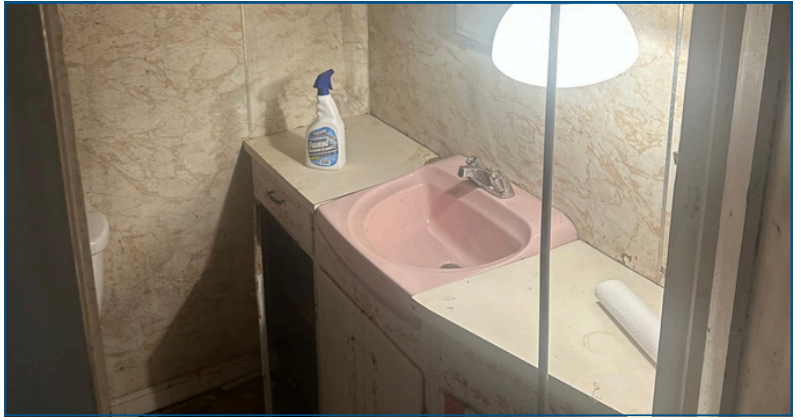
The Real Estate Experts You Can Trust!

TomSmithLandandHomes.com

Information is believed to be accurate but not guaranteed.



The Residence



JAKE CALLENDER
REALTOR®
O: 601.898.2772 | C: 601.955.2559
Jake@TomSmithLand.com

DIAMOND SPILLER
REALTOR®
O: 662.441.2500 | C: 636.484.1985
Diamond@TomSmithLand.com

Expect More. Get More.

The Real Estate Experts You Can Trust!

TomSmithLandandHomes.com

Information is believed to be accurate but not guaranteed.



The Residence



JAKE CALLENDER

REALTOR®

O: 601.898.2772 | C: 601.955.2559

Jake@TomSmithLand.com



DIAMOND SPILLER

REALTOR®

O: 662.441.2500 | C: 636.484.1985

Diamond@TomSmithLand.com

Expect More. Get More.

The Real Estate Experts You Can Trust!

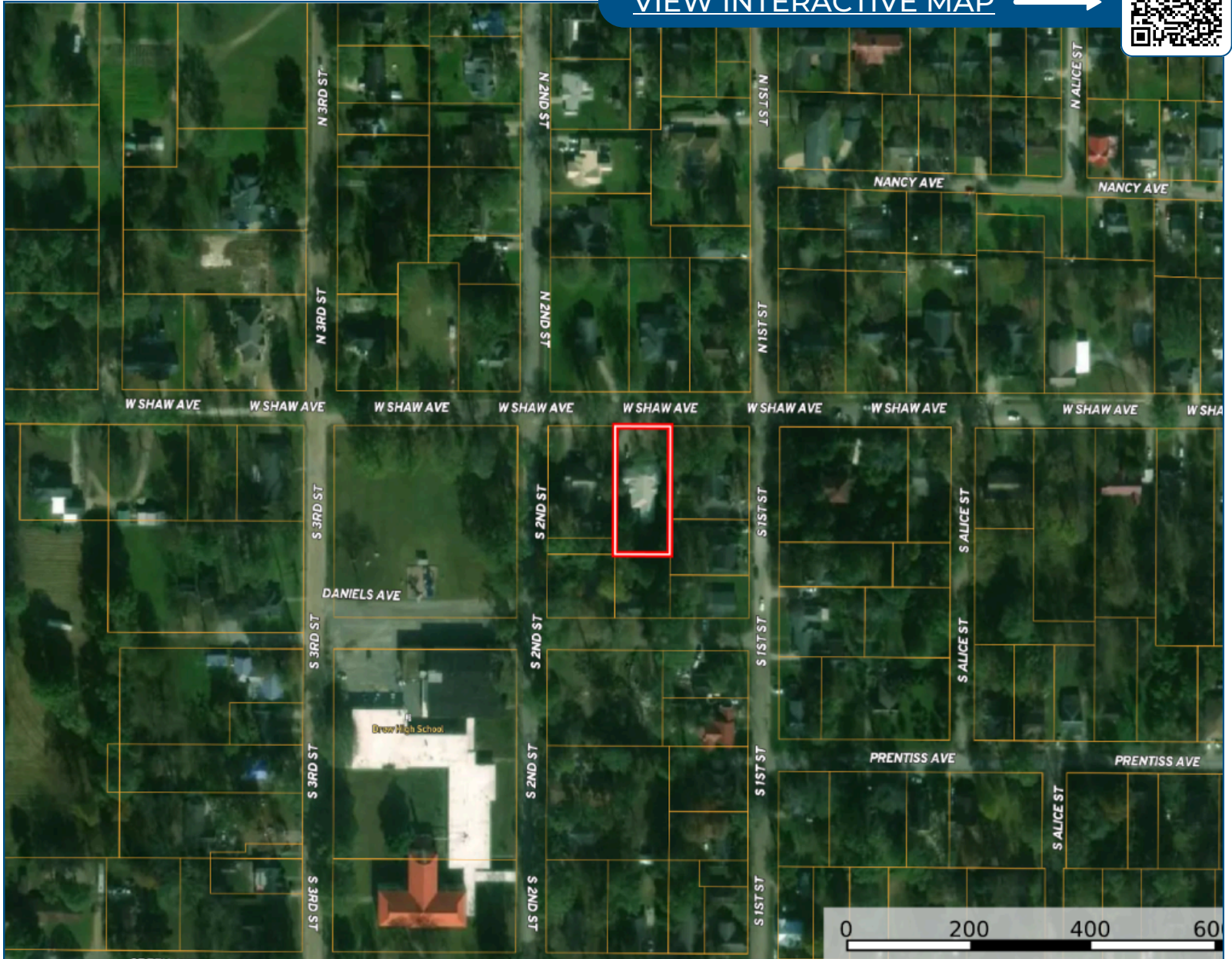
TomSmithLandandHomes.com

Information is believed to be accurate but not guaranteed.



Aerial Map

VIEW INTERACTIVE MAP →



JAKE CALLENDER

REALTOR®

O: 601.898.2772 | C: 601.955.2559

Jake@TomSmithLand.com

DIAMOND SPILLER

REALTOR®

O: 662.441.2500 | C: 636.484.1985

Diamond@TomSmithLand.com

Expect More. Get More.

The Real Estate Experts You Can Trust!

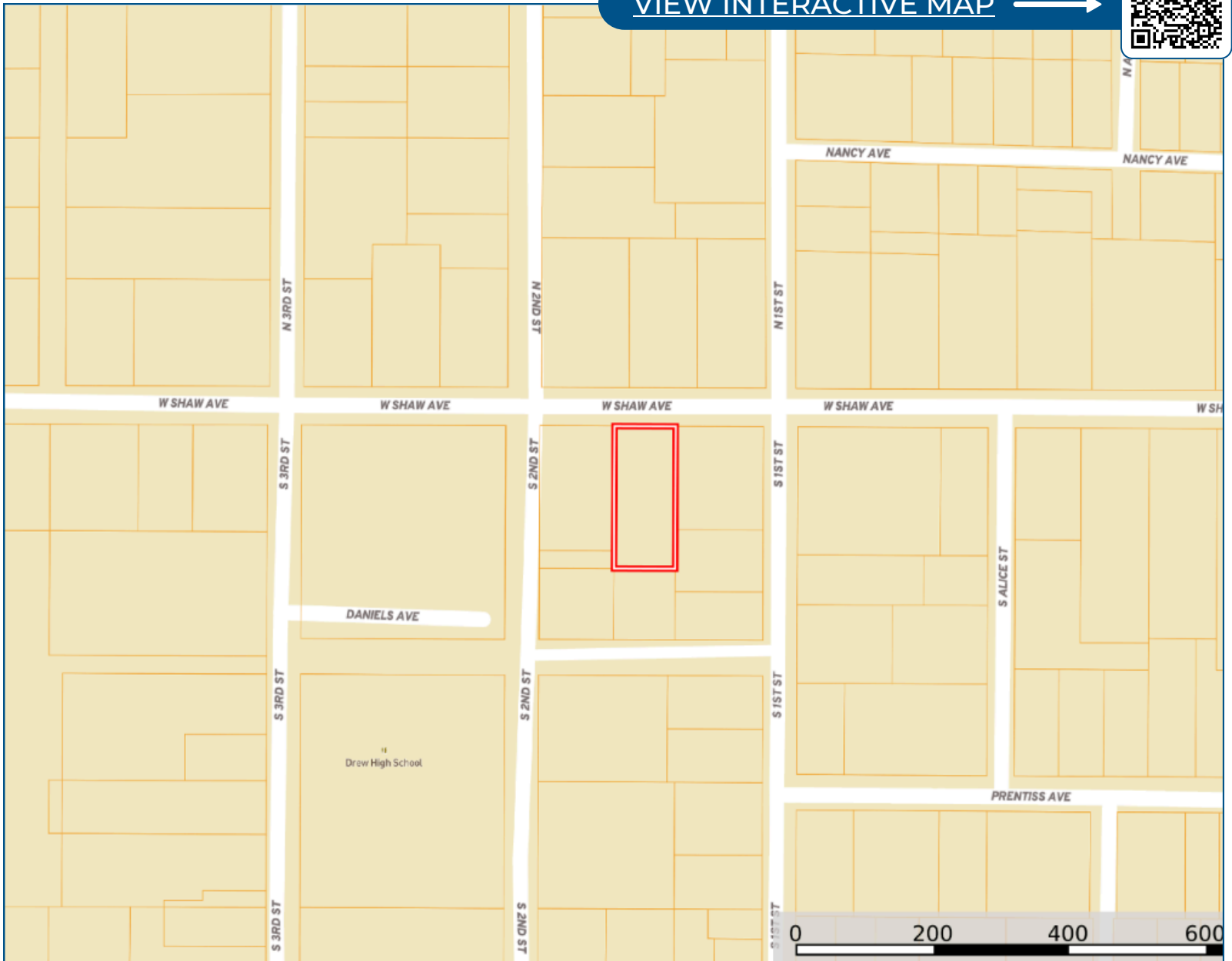
TomSmithLandandHomes.com

Information is believed to be accurate but not guaranteed.



Ownership Map

[VIEW INTERACTIVE MAP](#) →



JAKE CALLENDER
REALTOR®
O: 601.898.2772 | C: 601.955.2559
Jake@TomSmithLand.com

DIAMOND SPILLER
REALTOR®
O: 662.441.2500 | C: 636.484.1985
Diamond@TomSmithLand.com

Expect More. Get More.

The Real Estate Experts You Can Trust!

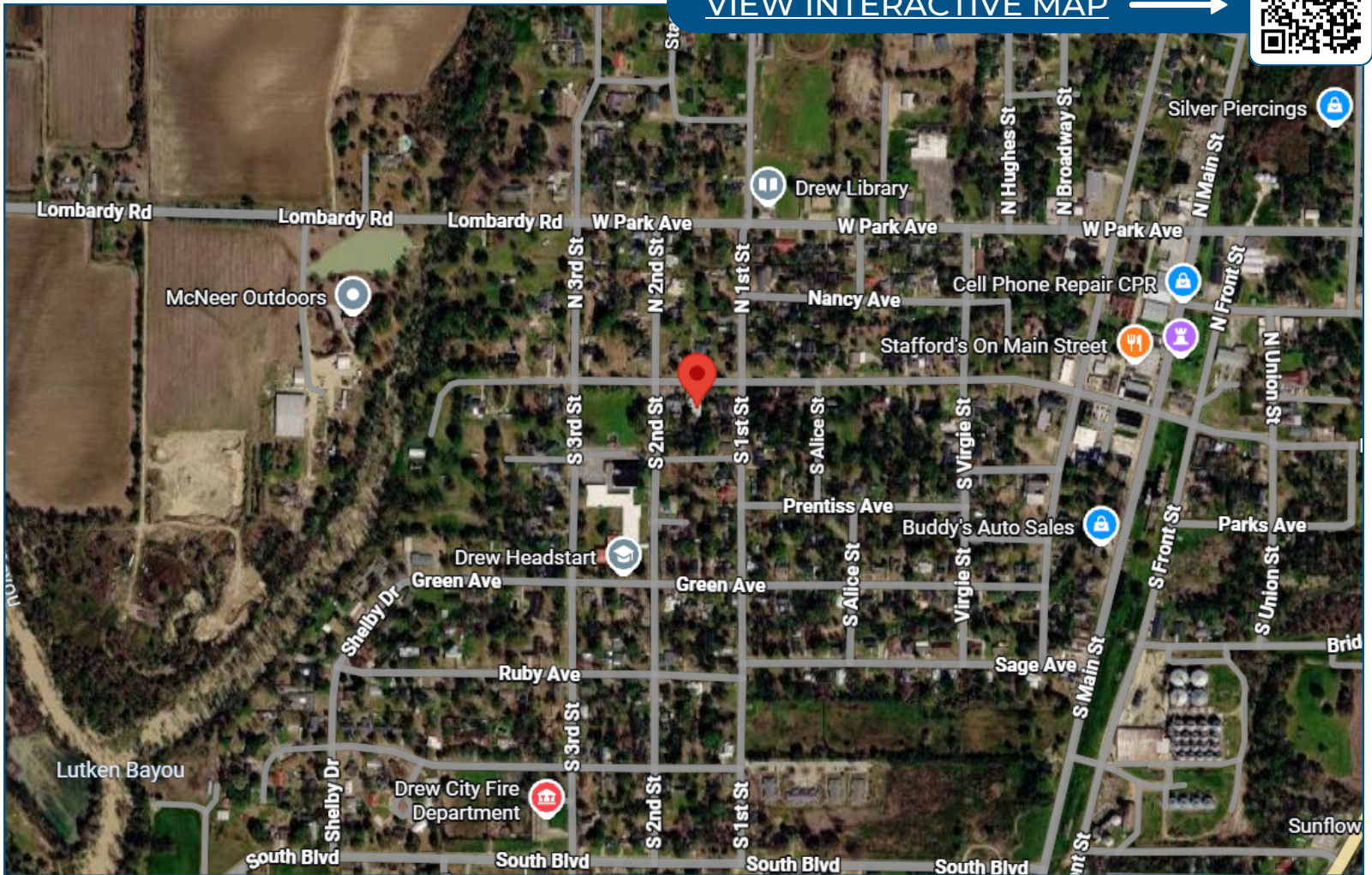


TomSmithLandandHomes.com

Information is believed to be accurate but not guaranteed.

Directional Map

VIEW INTERACTIVE MAP →



From the intersection of Hwy 49W & E Shaw Ave.: Turn left onto E Shaw Ave. Continue straight for 0.6 miles and the property will be on your left.



JAKE CALLENDER
REALTOR®
O: 601.898.2772 | C: 601.955.2559
Jake@TomSmithLand.com

DIAMOND SPILLER
REALTOR®
O: 662.441.2500 | C: 636.484.1985
Diamond@TomSmithLand.com

Expect More. Get More.

The Real Estate Experts You Can Trust!

TomSmithLandandHomes.com

Information is believed to be accurate but not guaranteed.

