

# Premier Grenada Lake Area Land Opportunity

**Timber Investment • Recreational • Hunting**

108.6± Acres • Loblolly Pine • Hardwoods & Mixed Timber

**Grenada County, Mississippi**

**\$271,500**



# Property Information

## Location

- Grenada County, MS
- Located South of Grenada Lake
- North of the Gore Springs Community
- 46± Miles to Oxford
- 116± Miles to Memphis
- 122± Miles to Jackson

## Property Use:

- Recreational
- Timber Investment
- Hunting
- Investment

## Coordinates:

- 33.7875, -89.6194

# Property Highlights

- 108.6± Acres
- Excellent Timber Investment Opportunity
- 99± Acres of Loblolly Pine
- 15± Acres of Hardwoods
- 6± Acres of Mixed Timber
- Excellent Wildlife Habitat
- Close Proximity to Grenada Lake
- Private & Secluded Setting
- Great Hunting & Recreational Potential
- Established Pine Plantation
- Multiple Potential Homesites
- Easy Access to Nearby Cities
- Ideal Weekend Retreat or Long-Term Investment



**LESLIE PINNIX** REALTOR®  
O: 662.771.1101 | C: 662.820.2205  
Leslie@TomSmithLand.com

**BRUCE WEST** MANAGING BROKER  
O: 662.441.2500 | C: 662.873.3007  
Bruce@TomSmithLand.com

**Expect More. Get More.**

**TomSmithLandandHomes.com**

*The Real Estate Experts You Can Trust!*



Information is believed to be accurate but not guaranteed.

# The Property

# 108.6± Acres

Located just south of Grenada Lake and north of the Gore Springs community, this exceptional 108.6± acre Grenada County tract offers a rare combination of timber investment, recreation, and hunting potential.

The property features a diverse timber composition including approximately 99± acres of loblolly pine, 15± acres of hardwoods, and 6± acres of mixed timber, creating strong long-term investment value while also providing excellent wildlife habitat.

The diverse landscape offers a beautiful setting for outdoor recreation, hunting, and future enjoyment. Whether you are seeking a private retreat, hunting property, or long-term timber investment, this tract presents outstanding potential in a desirable North Mississippi location.

Conveniently positioned within driving distance of Oxford, Memphis, and Jackson, the property offers seclusion without sacrificing accessibility. Its close proximity to Grenada Lake further enhances the recreational appeal, making it ideal for outdoor enthusiasts and investors alike.

This versatile property offers an excellent opportunity to own a premier recreational and timber tract in Grenada County.



**LESLIE PINNIX**  
REALTOR®

O: 662.771.1101 | C: 662.820.2205  
Leslie@TomSmithLand.com

**BRUCE WEST**  
MANAGING BROKER

O: 662.441.2500 | C: 662.873.3007  
Bruce@TomSmithLand.com

**Expect More. Get More.**

*The Real Estate Experts You Can Trust!*



**TomSmithLandandHomes.com**

Information is believed to be accurate but not guaranteed.

# The Property



**LESLIE PINNIX**

REALTOR®

O: 662.771.1101 | C: 662.820.2205

Leslie@TomSmithLand.com

**BRUCE WEST**

MANAGING BROKER

O: 662.441.2500 | C: 662.873.3007

Bruce@TomSmithLand.com

**Expect More. Get More.**

*The Real Estate Experts You Can Trust!*

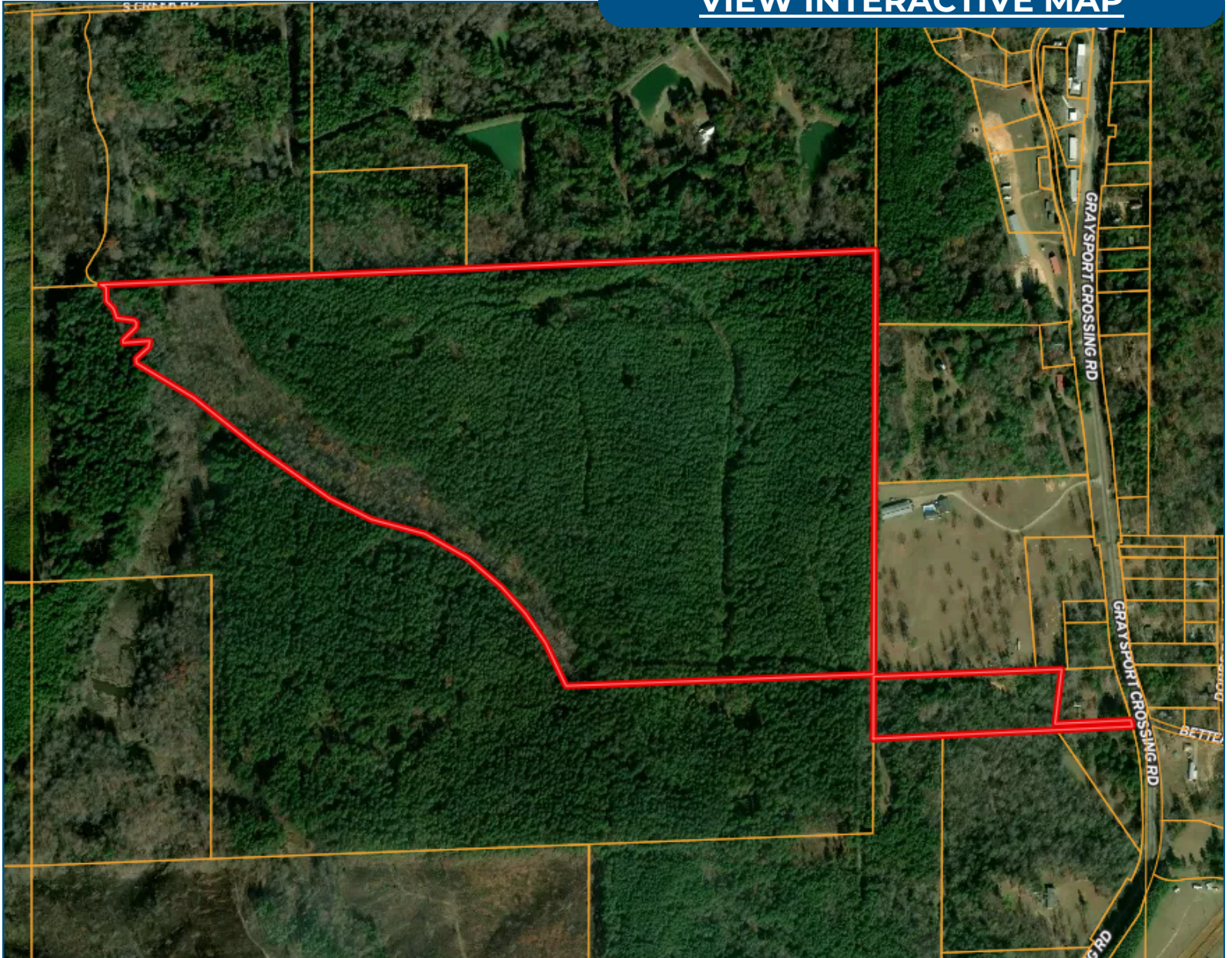


**TomSmithLandandHomes.com**

Information is believed to be accurate but not guaranteed.

# Aerial Map

[VIEW INTERACTIVE MAP](#)



**LESLIE PINNIX**

REALTOR®

O: 662.771.1101 | C: 662.820.2205

Leslie@TomSmithLand.com

**BRUCE WEST**

MANAGING BROKER

O: 662.441.2500 | C: 662.873.3007

Bruce@TomSmithLand.com

**Expect More. Get More.**

*The Real Estate Experts You Can Trust!*

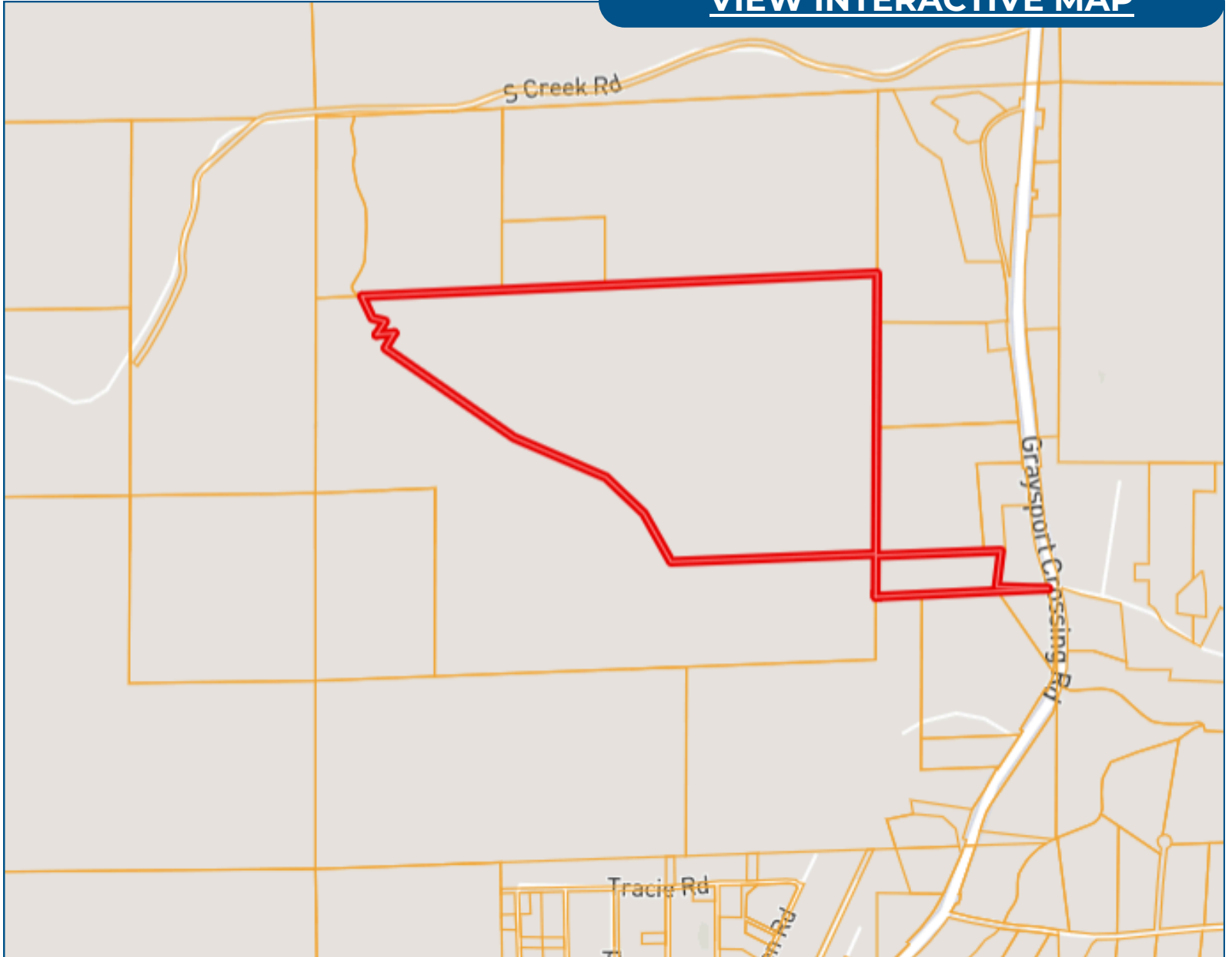


[TomSmithLandandHomes.com](http://TomSmithLandandHomes.com)

Information is believed to be accurate but not guaranteed.

# Ownership Map

[VIEW INTERACTIVE MAP](#)



**LESLIE PINNIX**

REALTOR®

O: 662.771.1101 | C: 662.820.2205

Leslie@TomSmithLand.com

**BRUCE WEST**

MANAGING BROKER

O: 662.441.2500 | C: 662.873.3007

Bruce@TomSmithLand.com

**Expect More. Get More.**

*The Real Estate Experts You Can Trust!*

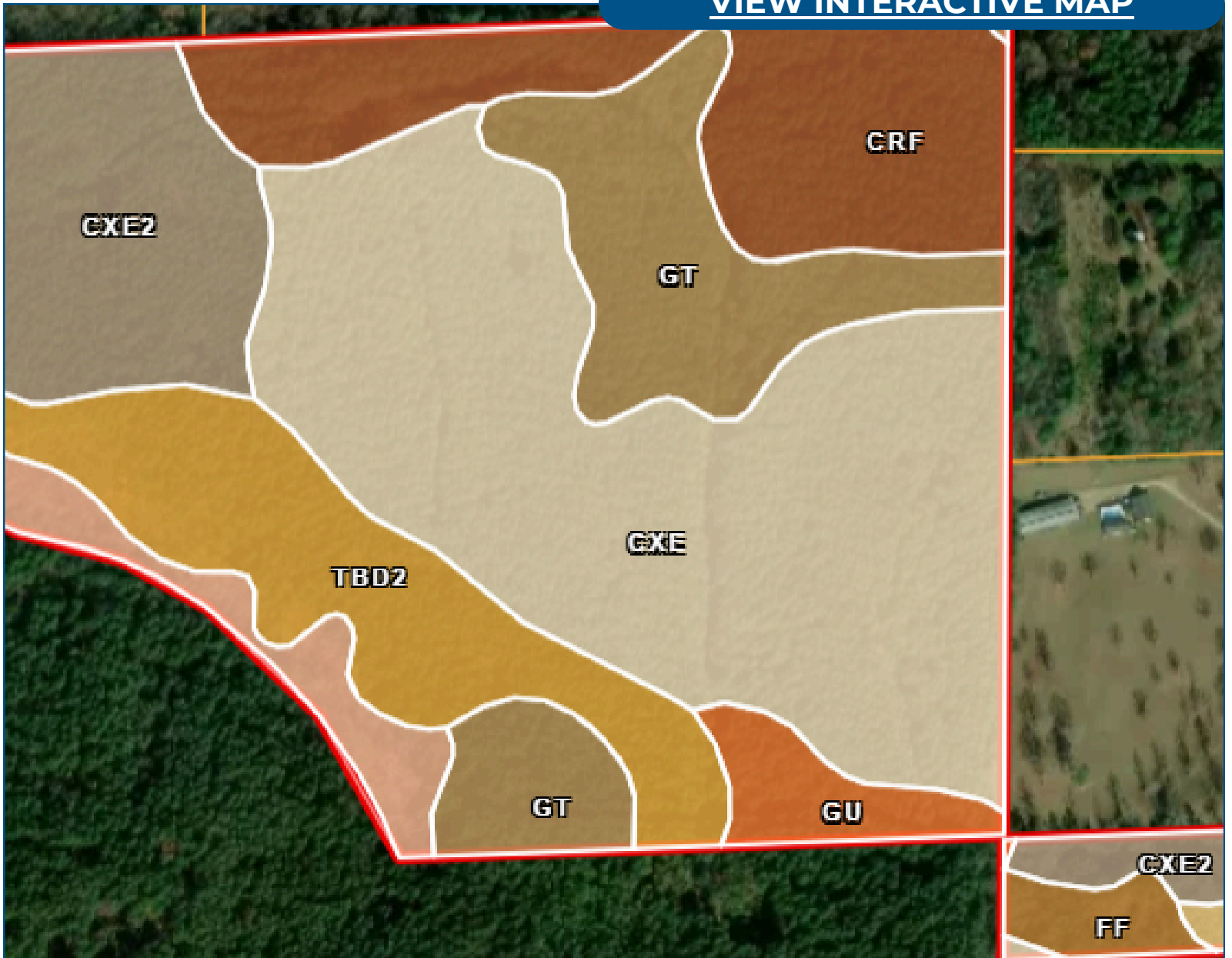
[TomSmithLandandHomes.com](http://TomSmithLandandHomes.com)

Information is believed to be accurate but not guaranteed.



# Soil Map

[VIEW INTERACTIVE MAP](#)



**LESLIE PINNIX**  
REALTOR®  
O: 662.771.1101 | C: 662.820.2205  
Leslie@TomSmithLand.com

**BRUCE WEST**  
MANAGING BROKER  
O: 662.441.2500 | C: 662.873.3007  
Bruce@TomSmithLand.com

**Expect More. Get More.**

*The Real Estate Experts You Can Trust!*

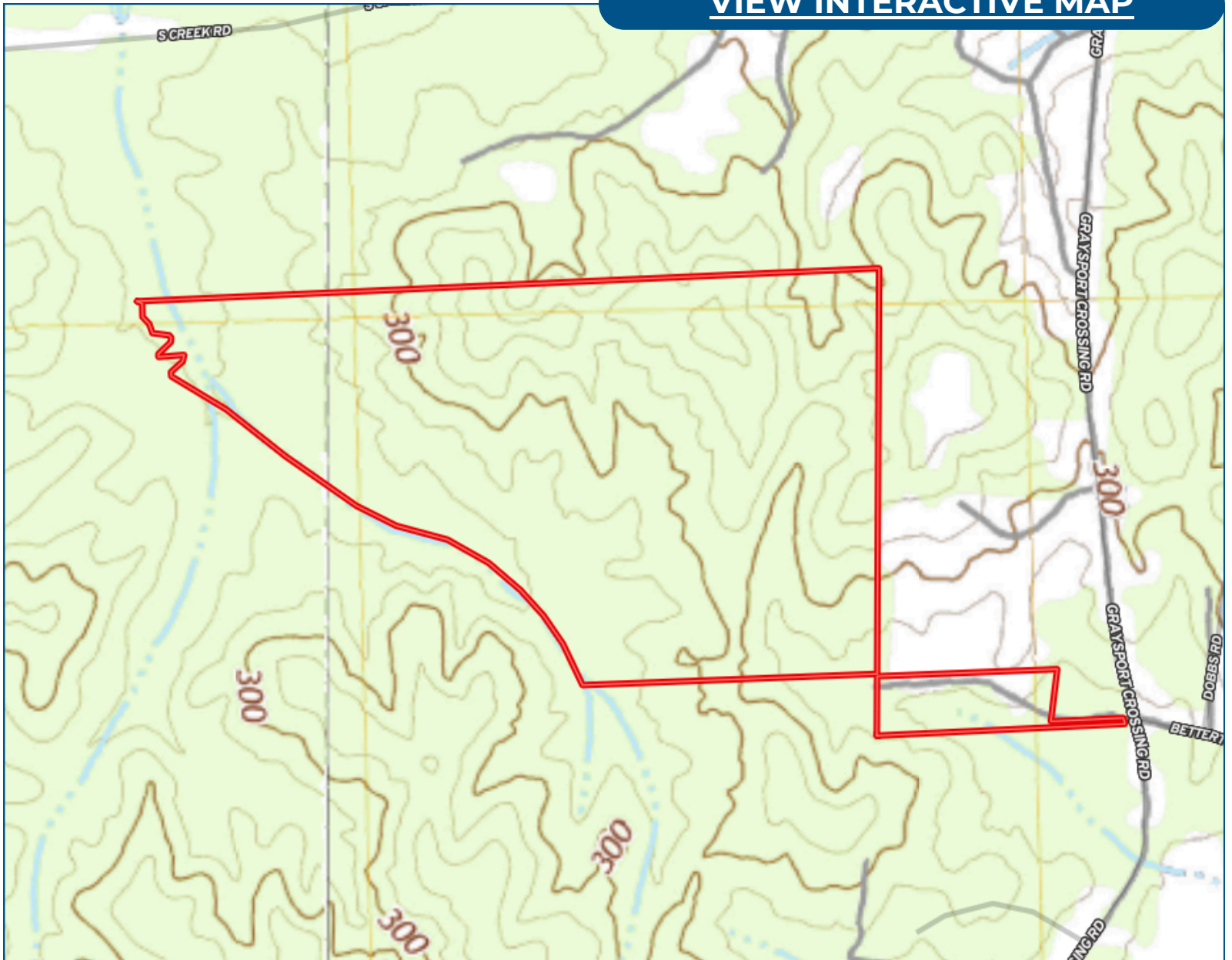
[TomSmithLandandHomes.com](http://TomSmithLandandHomes.com)

Information is believed to be accurate but not guaranteed.



# Topography Map

[VIEW INTERACTIVE MAP](#)



**LESLIE PINNIX**

REALTOR®

O: 662.771.1101 | C: 662.820.2205

Leslie@TomSmithLand.com

**BRUCE WEST**

MANAGING BROKER

O: 662.441.2500 | C: 662.873.3007

Bruce@TomSmithLand.com

**Expect More. Get More.**

*The Real Estate Experts You Can Trust!*

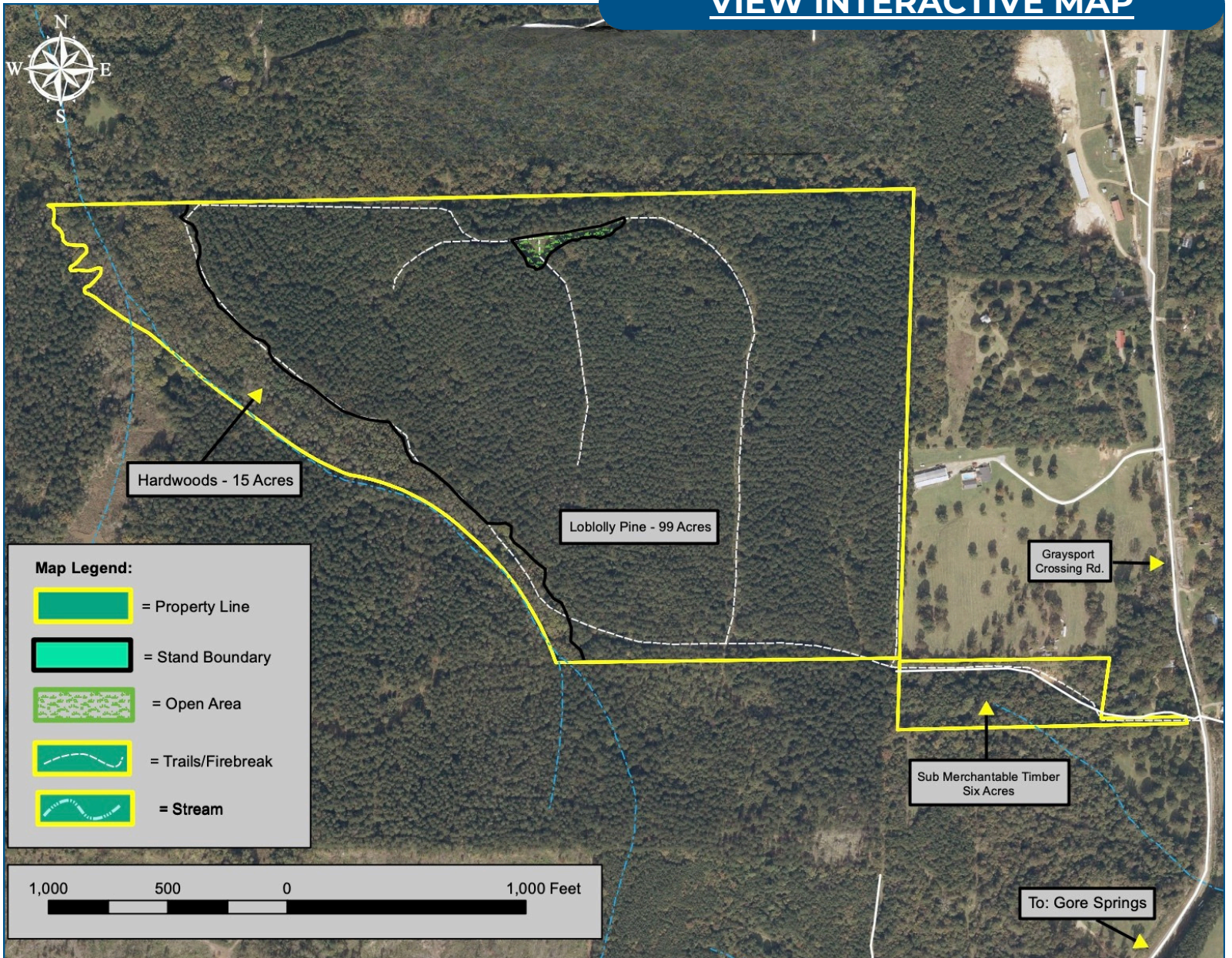
[TomSmithLandandHomes.com](http://TomSmithLandandHomes.com)

Information is believed to be accurate but not guaranteed.



# Timber Map

[VIEW INTERACTIVE MAP](#)



**LESLIE PINNIX**

REALTOR®

O: 662.771.1101 | C: 662.820.2205

Leslie@TomSmithLand.com

**BRUCE WEST**

MANAGING BROKER

O: 662.441.2500 | C: 662.873.3007

Bruce@TomSmithLand.com

**Expect More. Get More.**

*The Real Estate Experts You Can Trust!*

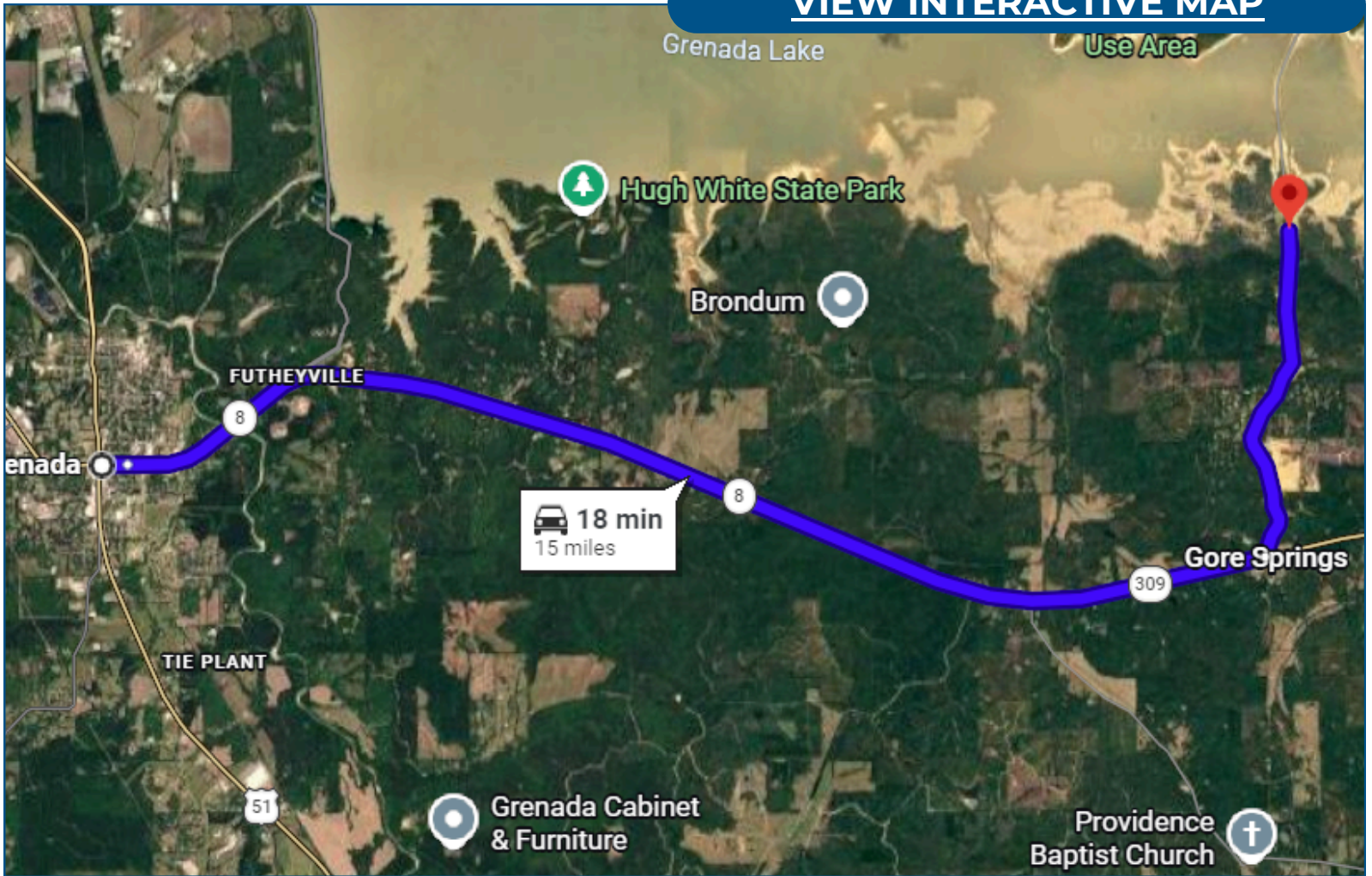
[TomSmithLandandHomes.com](http://TomSmithLandandHomes.com)

Information is believed to be accurate but not guaranteed.



# Directional Map

[VIEW INTERACTIVE MAP](#)



From Grenada, MS:

Travel east from Grenada via MS-8 E/Lakeview Drive and continue approximately 11.5 miles. Turn left onto Graysport Crossing Road and proceed for approximately 3.3 miles to the property area. The tract is conveniently located just south of Grenada Lake and north of the Gore Springs community. Use the coordinates 33.7875, -89.6194 for exact property location.



**LESLIE PINNIX**

REALTOR®

O: 662.771.1101 | C: 662.820.2205

Leslie@TomSmithLand.com

**BRUCE WEST**

MANAGING BROKER

O: 662.441.2500 | C: 662.873.3007

Bruce@TomSmithLand.com

**Expect More. Get More.**

*The Real Estate Experts You Can Trust!*



[TomSmithLandandHomes.com](http://TomSmithLandandHomes.com)

Information is believed to be accurate but not guaranteed.