

Move-In Ready Home

Bolivar County

1464 Memorial Drive, Boyle, MS 38730



\$299,000



Expect More. Get More.

Property Information

Location:

- 5 Minutes to Downtown Cleveland, MS (2.2 Miles)

Property Use:

- Residential

Coordinates:

- 33.7142, -90.72765

Property Highlights

- 0.7± Acres
- 3 Bedrooms
- 2 Bathrooms
- 2,304± SqFt
- Built in 1991
- 2-Car Garage
- 2 Sheds
- Front Porch



Expect More. Get More.

**ANTHONY
STEEN**

ALC®, REALTOR®

Office: 601.898.2772

Cell: 662.645.5151

Anthony@TomSmithLand.com

**A Real Estate Expert
You Can Trust!**



The Residence

2,304± SqFt

Move-in ready home for sale in Boyle, MS, located at 1464 Memorial Drive in Bolivar County. This property features three bedrooms, two bathrooms, and walk-in closets. One bathroom includes a walk-in shower with a bench, while the other has a bathtub, both providing plenty of counter space. Set on 0.70± acres, the home was built in 1991 and offers 2,304± square feet of heated and cooled living space. The exterior includes a two-car garage, two sheds, and a cozy front porch that is perfect for relaxing. The spacious backyard provides plenty of room, and the two sheds offer additional storage for lawn equipment or any other items you may have. Call Anthony Steen today to schedule a private showing of this exceptional home!



**ANTHONY
STEEN**

ALC®, REALTOR®

Office: 601.898.2772

Cell: 662.645.5151

Anthony@TomSmithLand.com



Expect More. Get More.

The Residence



**ANTHONY
STEEN**

ALC®, REALTOR®

Office: 601.898.2772

Cell: 662.645.5151

Anthony@TomSmithLand.com

**Tom
Smith
LAND AND
HOMES**

Expect More. Get More.

The Residence



**ANTHONY
STEEN**

ALC®, REALTOR®

Office: 601.898.2772

Cell: 662.645.5151

Anthony@TomSmithLand.com



Expect More. Get More.

The Residence



**ANTHONY
STEEN**

ALC®, REALTOR®

Office: 601.898.2772

Cell: 662.645.5151

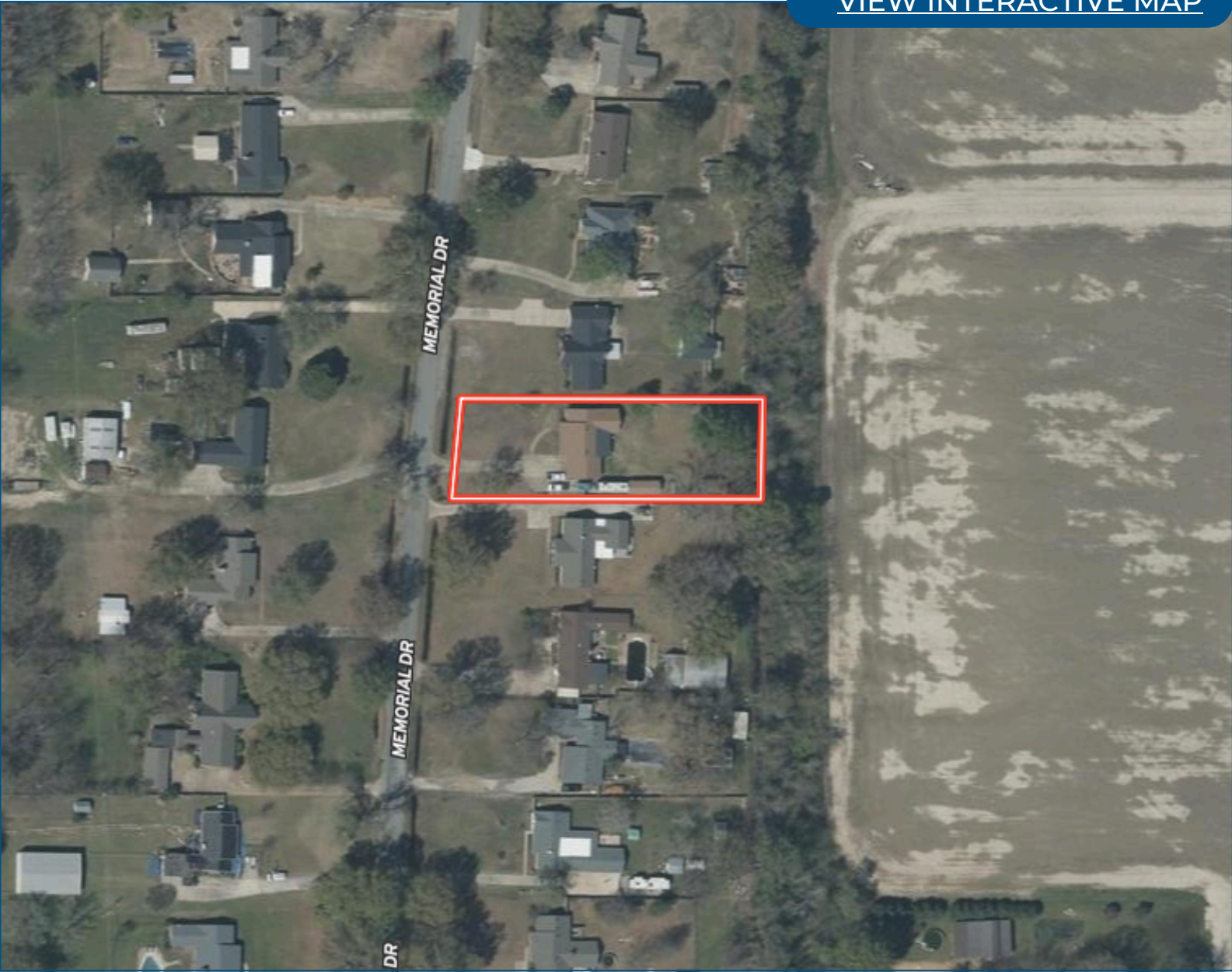
Anthony@TomSmithLand.com



Expect More. Get More.

Aerial Map

[VIEW INTERACTIVE MAP](#)



**ANTHONY
STEEN**

ALC®, REALTOR®

Office: 601.898.2772

Cell: 662.645.5151

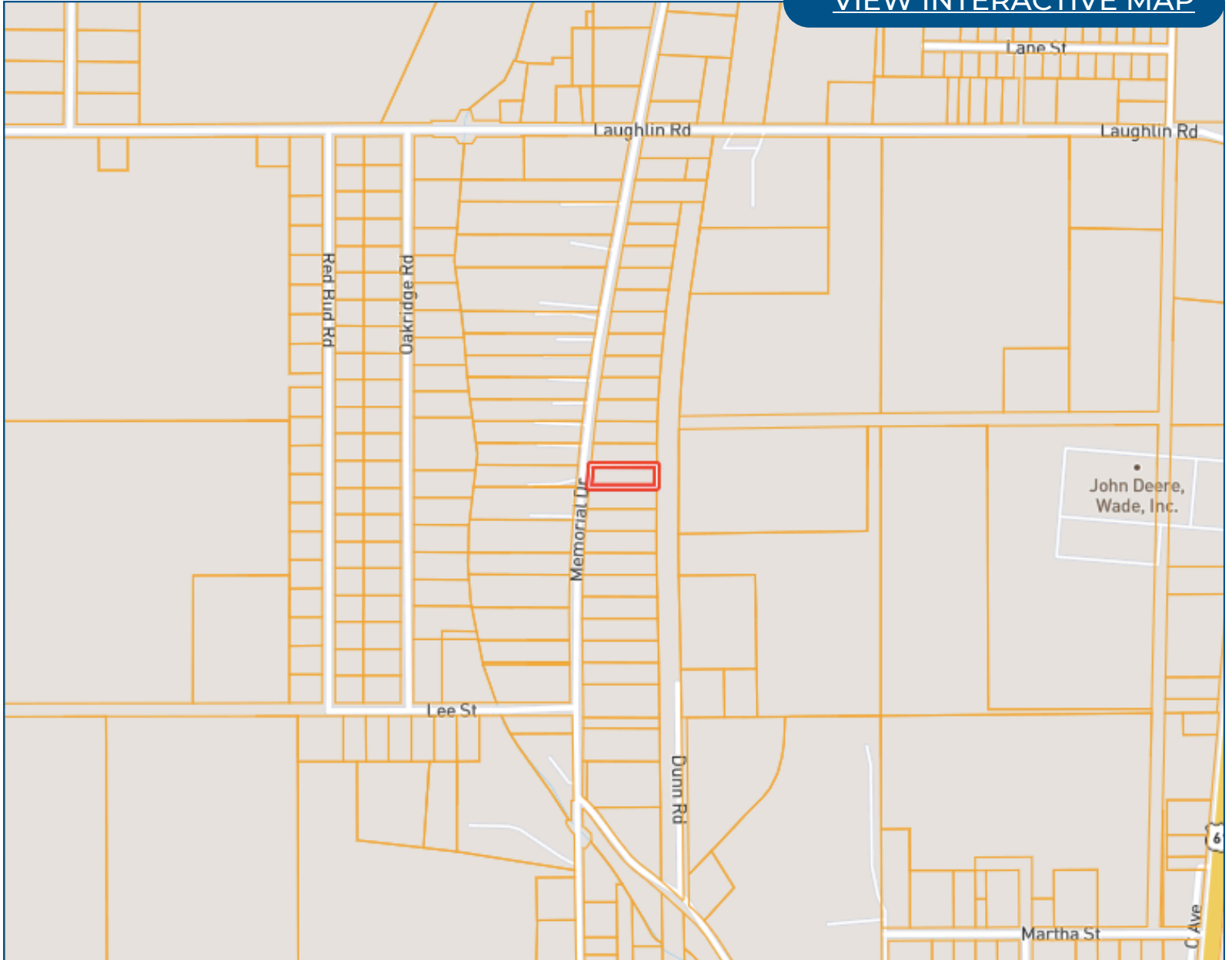
Anthony@TomSmithLand.com



Expect More. Get More.

Ownership Map

[VIEW INTERACTIVE MAP](#)



**ANTHONY
STEEN**

ALC®, REALTOR®

Office: 601.898.2772

Cell: 662.645.5151

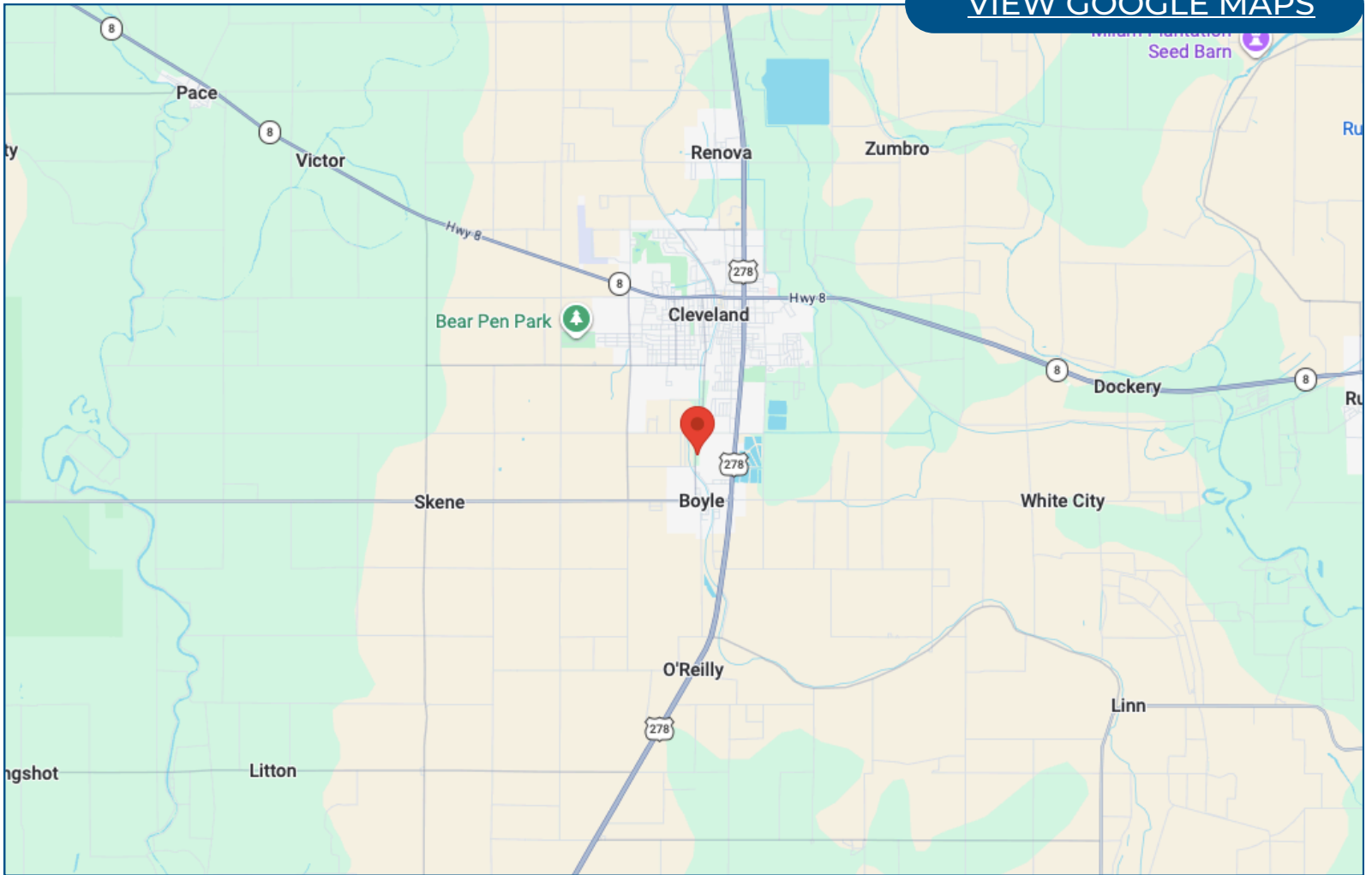
Anthony@TomSmithLand.com



Expect More. Get More.

Directional Map

[VIEW GOOGLE MAPS](#)



Directions from US-61 & MS-8, Cleveland, MS 38732

Travel south on US-61 S for 2.0 miles. Turn right onto Laughlin Road for 0.6 miles. Turn left onto Memorial Drive. After 0.3 miles, the home will be on the left.

**ANTHONY
STEEN**

ALC®, REALTOR®

Office: 601.898.2772

Cell: 662.645.5151

Anthony@TomSmithLand.com



Expect More. Get More.

Listing Agent



Anthony Steen

ALC, Realtor & Land Specialist

Anthony was born in Bolivar County, but his family moved shortly after to Clarksdale, MS. He spent his primary educational and athletic years attending and playing sports at Lee Academy. As a child, he played baseball, football, basketball, soccer and even threw shot put and disc for track. After graduating in 2009, Anthony continued his education and athletic career for the next five years at the University of Alabama on a football scholarship. He majored in Health Environmental Science and completed his bachelor's degree and was a part of two SEC Championship and three National Championship teams with the Crimson Tide. After college, Anthony played for the Arizona Cardinals and the Miami Dolphins in the National Football League for 4 years until he decided to retire and come back to the Mississippi Delta where he grew up.

Growing up, Anthony was an avid hunter and fisherman who loved spending time helping his grandfather on the farm growing cotton and soybeans. His father and grandfather helped instill the importance of and a love for taking care of the land and wildlife around him. He enjoys all types of hunting from deer, duck, and turkey, to hogs, frogs, and pheasant. After retiring from the NFL, Anthony knew he wanted to come back home to the land he loved so much as a child.

Anthony currently resides in Tallahatchie County where he farmed soybeans with his family for a few years. After much deliberation and praying, Anthony knew it was time to start a new career path. He was certain he wanted to find a way to share his passion for the outdoors with others while staying true to his country roots. As a college athlete, Anthony learned hard work, dedication, discipline, trust, and how to work with others. These traits along with Anthony's personality, honesty, and knowledge of the land make him the perfect agent for you.

OFFICE: 601.898.2772

CELL: 662.645.5151

Anthony@TomSmithLand.com

**CALL ANTHONY STEEN
TODAY!**

