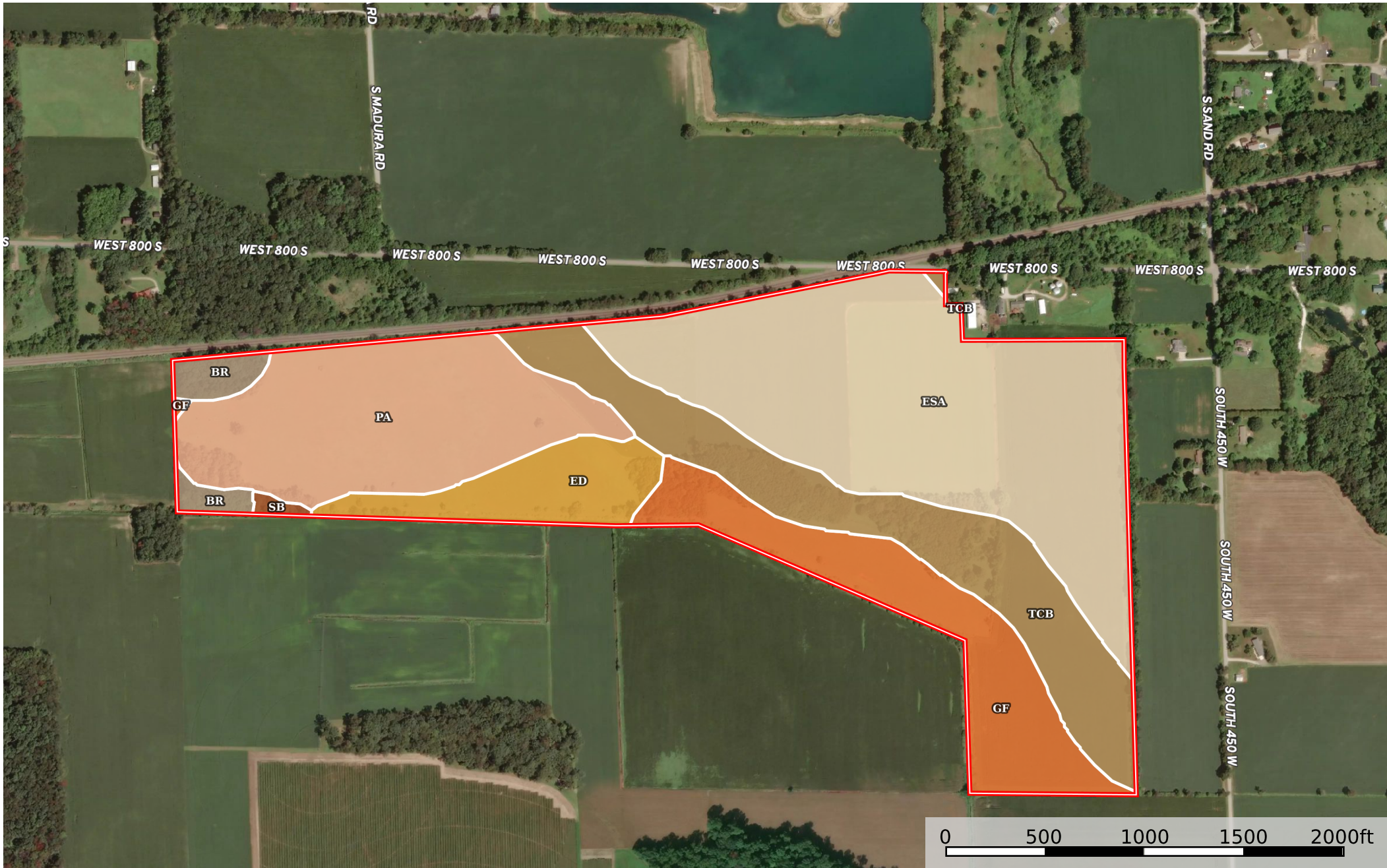


# Parkman

Indiana, AC +/-



 Boundary

Boundary 144.28 ac

SOIL CODE	SOIL DESCRIPTION	ACRES	%	CPI	NCCPI	CAP
EsA	Elston loam, 0 to 2 percent slopes	54.04	37.46	0	68	2s
Pa	Palms muck, sandy substratum	29.89	20.72	0	90	3w
TcB	Tracy sandy loam, 2 to 6 percent slopes	26.26	18.2	0	56	2e
Gf	Gilford fine sandy loam, 0 to 1 percent slopes	20.13	13.95	0	77	2w
Ed	Edwards muck, drained	10.09	6.99	0	83	4w
Br	Bourbon sandy loam	3.35	2.32	0	57	2w
Sb	Sebewa loam, shaly sand substratum	0.52	0.36	0	63	2w
TOTALS		144.28(*)	100%	-	72.41	2.35

(\*) Total acres may differ in the second decimal compared to the sum of each acreage soil. This is due to a round error because we only show the acres of each soil with two decimal.

