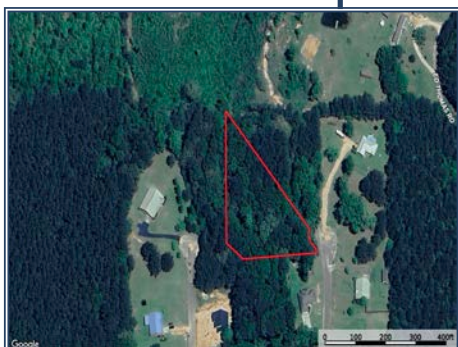




Welcome to peaceful country living with modern comfort in this mobile home, perfectly situated on 1.42 spacious acres at the end of a quiet dead-end street in Summit, MS. Located just minutes from Southwest Mississippi Community College and zoned for the highly regarded North Pike School District, this property offers both well-kept 2020 Southern double-wide convenience and privacy. Step inside to an inviting open floor plan featuring a bright, airy living area that flows seamlessly into the kitchen and dining space—ideal for family living and entertaining. The home includes 4 generous bedrooms and 2 full bathrooms, providing plenty of room for everyone. The primary suite boasts a large walk-in closet and a comfortable ensuite bath. If you're looking for a move-in ready home with space, privacy, and a great location near schools and shopping, this Summit property is a must-see!

1033 Spike Lane, Summit, MS

31.307244, -90.436444 GPS



1.42± Acres  
4 Bed/2 Bath  
MLS #4132658  
**\$149,900**



**Danielle Burnette**  
dandyburn@gmail.com  
Office: (601) 250-0017  
Cell: (601) 249-7061  
SouthernStatesRealty.com



**Scott Campbell**  
Broker Associate  
scottcampbell050@gmail.com  
Office: (601) 250-0017  
Cell: (601) 248-4595  
SouthernStatesRealty.com