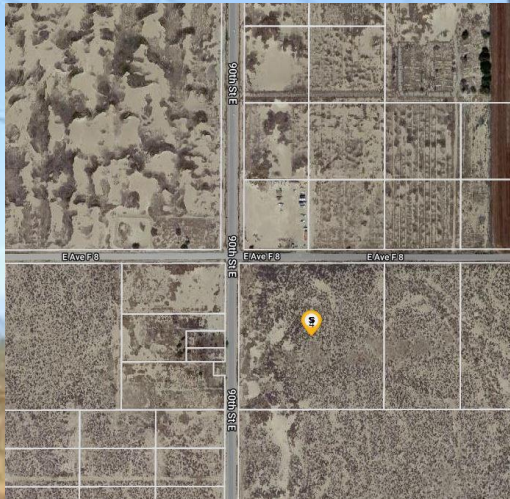
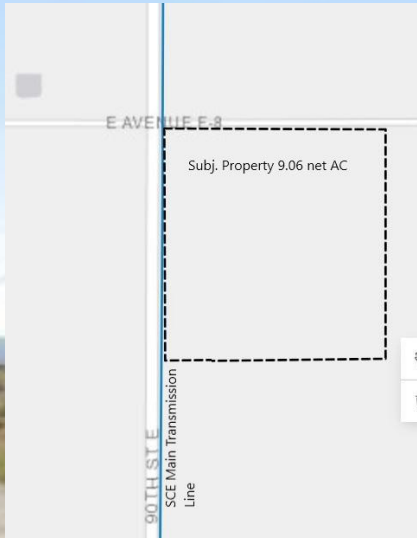


9.37 AC (9.09 Net AC) Redman, CA. North of Los Angeles Lake, East of Lancaster \$198,898



SMOKE TREE COMMERCIAL
Commercial - Residential - Land
www.SmokeTreeCommercial.com
949.667.0322
stcrealestate@mail.com DRE CA 01135909

Information

A Canvas for Your Dreams

The land's generous size and versatile **LCA21 zoning** allow for a wide range of uses, including:

- A **single-family residence** (manufactured homes welcome)
- **Barns, workshops, garages**, and other outbuildings
- **Equestrian facilities** such as corrals, arenas, and shelters
- **Livestock and small-animal setups** including pens and coops
- **Agricultural pursuits**—row crops, orchards, gardens, and more
- **Alternative energy production facility** – Existing solar field/farm nearby

Whether you envision horses grazing at sunset, a productive homestead, or a quiet getaway surrounded by open skies, this property offers the space and flexibility to bring it to life.

Rural Living with Real Convenience

- Enjoy the serenity of country living without sacrificing access to essentials. Shopping, fuel, and services are just **10–16 miles away**, giving you the perfect balance of seclusion and practicality.

Property Highlights

- **±9 (9.09 Net) acres** of flat, usable land
- **Two paved-road access points**
- **Highly flexible LCA21 zoning**
- Ideal for ranching, farming, homesteading, or alternative energy production facility/farm
- Expansive views and peaceful surroundings
- Convenient proximity to nearby amenities

Location Coordinates

- **34.741334N, -117.969644W**