

Prime Commercial Bank Building

Bolivar County

100 Sharpe Street, Cleveland, MS 38732



\$650,000



Expect More. Get More.

Property Information

Location:

- 100 Sharpe Street,
Cleveland, MS 38732

Coordinates:

- 33.74725, -90.72085

Property Use:

- Investment Opportunity
- Bank
- Office

Property Highlights

- 0.42± Acres
- 2,726± Sq Ft
- Five Private Offices
- Two Vaults
- Computer Room with Cooling Unit
- Two Teller Windows
- Drive-Thru



Expect More. Get More.

**BRUCE
WEST**

MANAGING BROKER, ALC®

Office: 662.771.1101

Cell: 662.873.3007

Bruce@TomSmithLand.com

**A Real Estate Expert
You Can Trust!**



Commercial Property

Located in Downtown Cleveland, Mississippi, at the corner of Sharpe Street and E. Sunflower Road, this 2,726± sq. ft. commercial property offers a prime, highly visible location ideal for a variety of business uses. Previously operated as a bank, the building features five private offices, a breakroom with a kitchenette, and a dedicated computer room with its own cooling system. Additional highlights include two vaults for secure storage, along with two teller windows and a drive-thru, providing convenience and efficiency for customer service operations.



**BRUCE
WEST**
REALTOR®

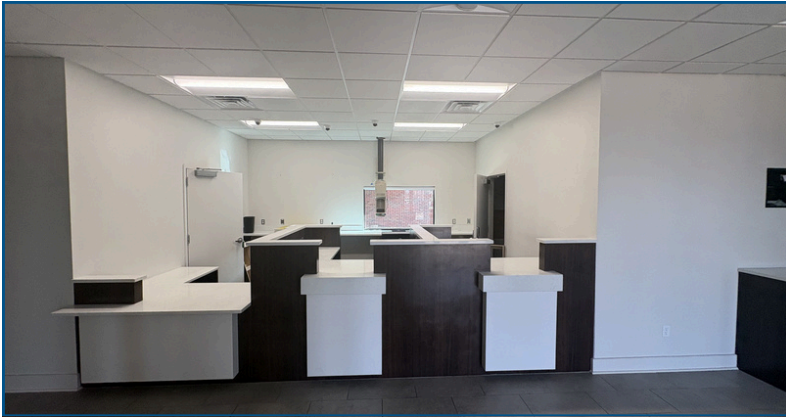
Office: 662.771.1101
Cell: 662.873.3007

Bruce@TomSmithLand.com



Expect More. Get More.

Commercial Property



**BRUCE
WEST**
REALTOR®

Office: 662.771.1101
Cell: 662.873.3007

Bruce@TomSmithLand.com


**Tom
Smith
LAND AND
HOMES**

Expect More. Get More.

Commercial Property



**BRUCE
WEST**
REALTOR®

Office: 662.771.1101
Cell: 662.873.3007

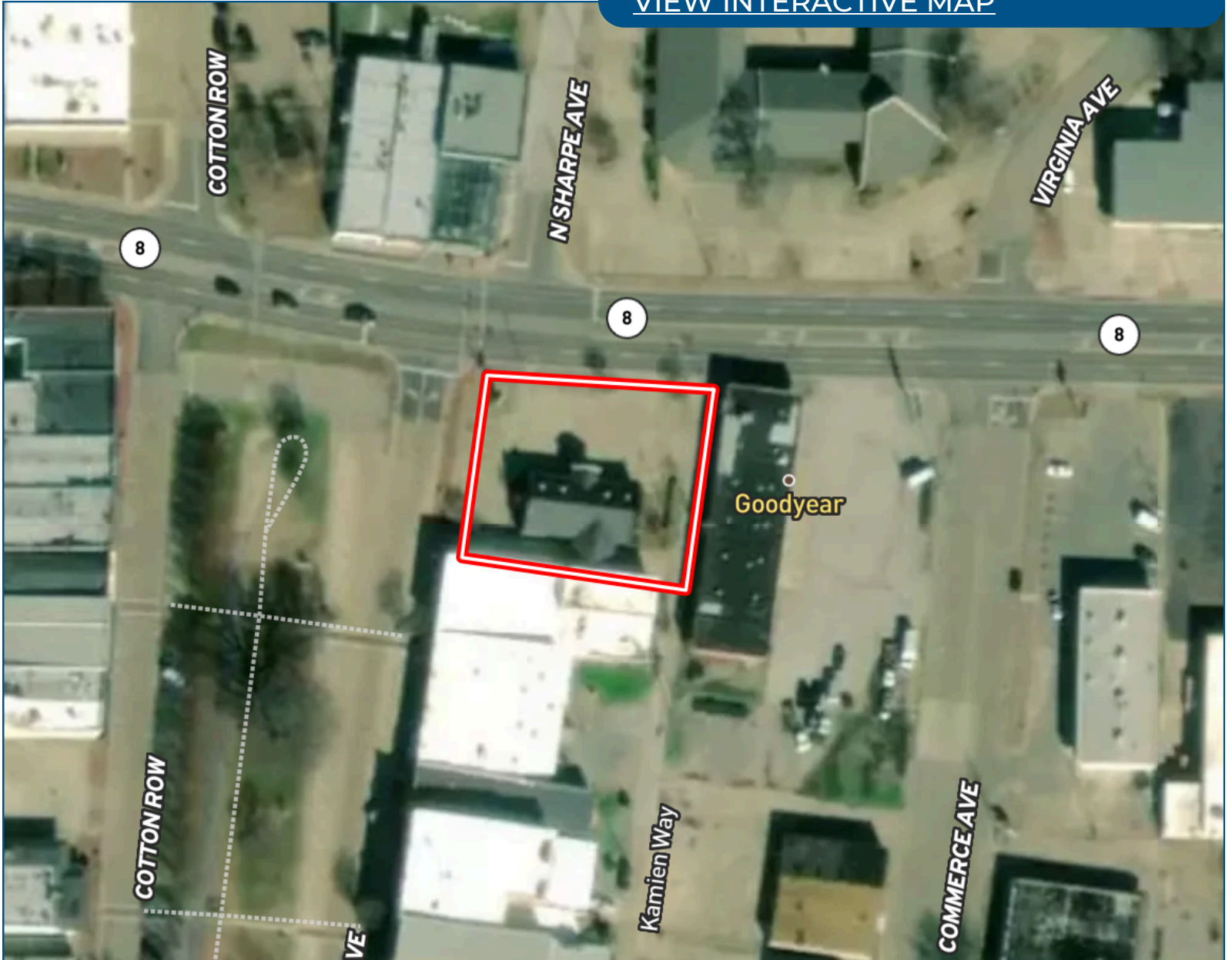
Bruce@TomSmithLand.com



Expect More. Get More.

Aerial Map

[VIEW INTERACTIVE MAP](#)



**BRUCE
WEST**
REALTOR®

Office: 662.771.1101
Cell: 662.873.3007

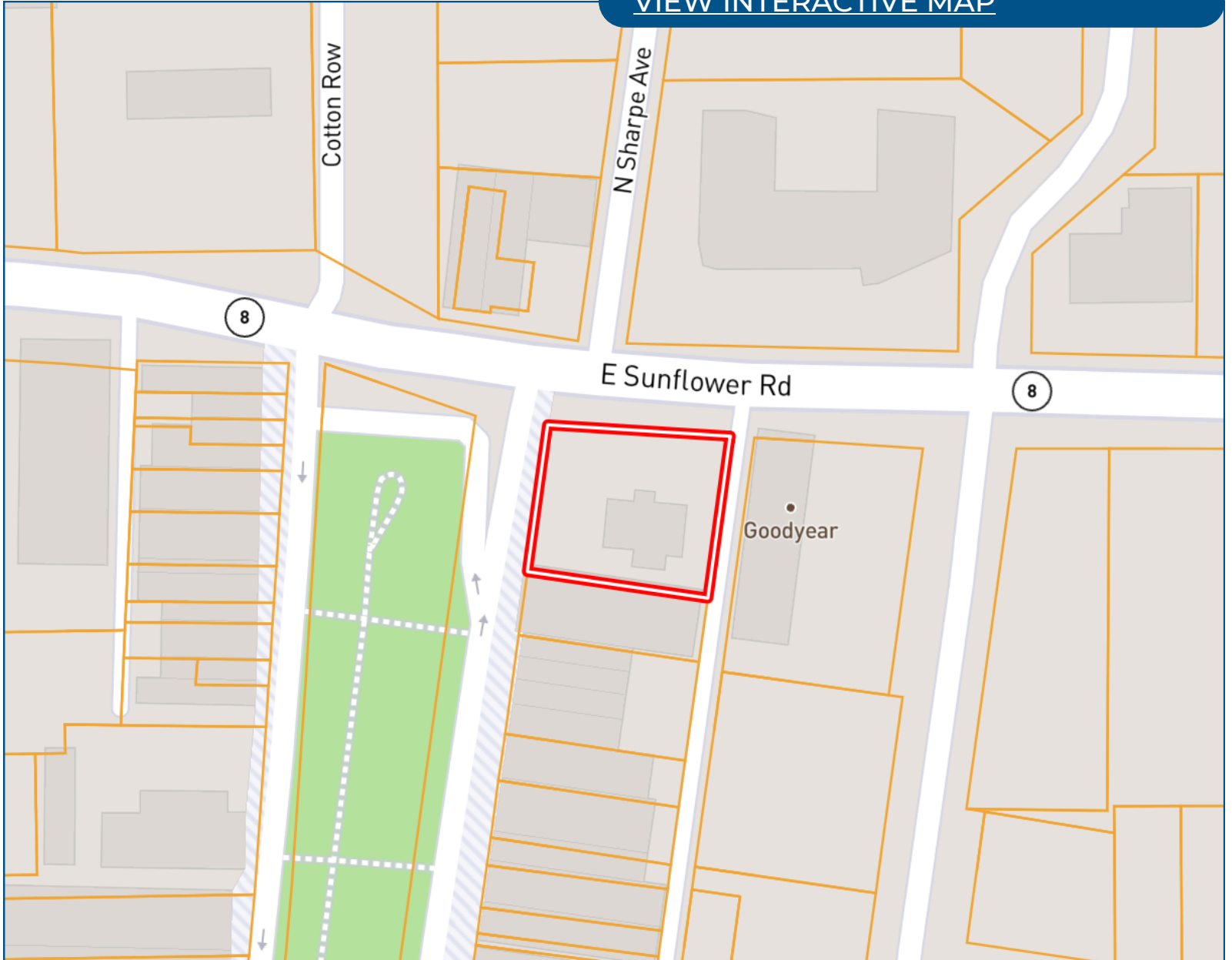
Bruce@TomSmithLand.com



Expect More. Get More.

Ownership Map

[VIEW INTERACTIVE MAP](#)



**BRUCE
WEST**
REALTOR®

Office: 662.771.1101
Cell: 662.873.3007

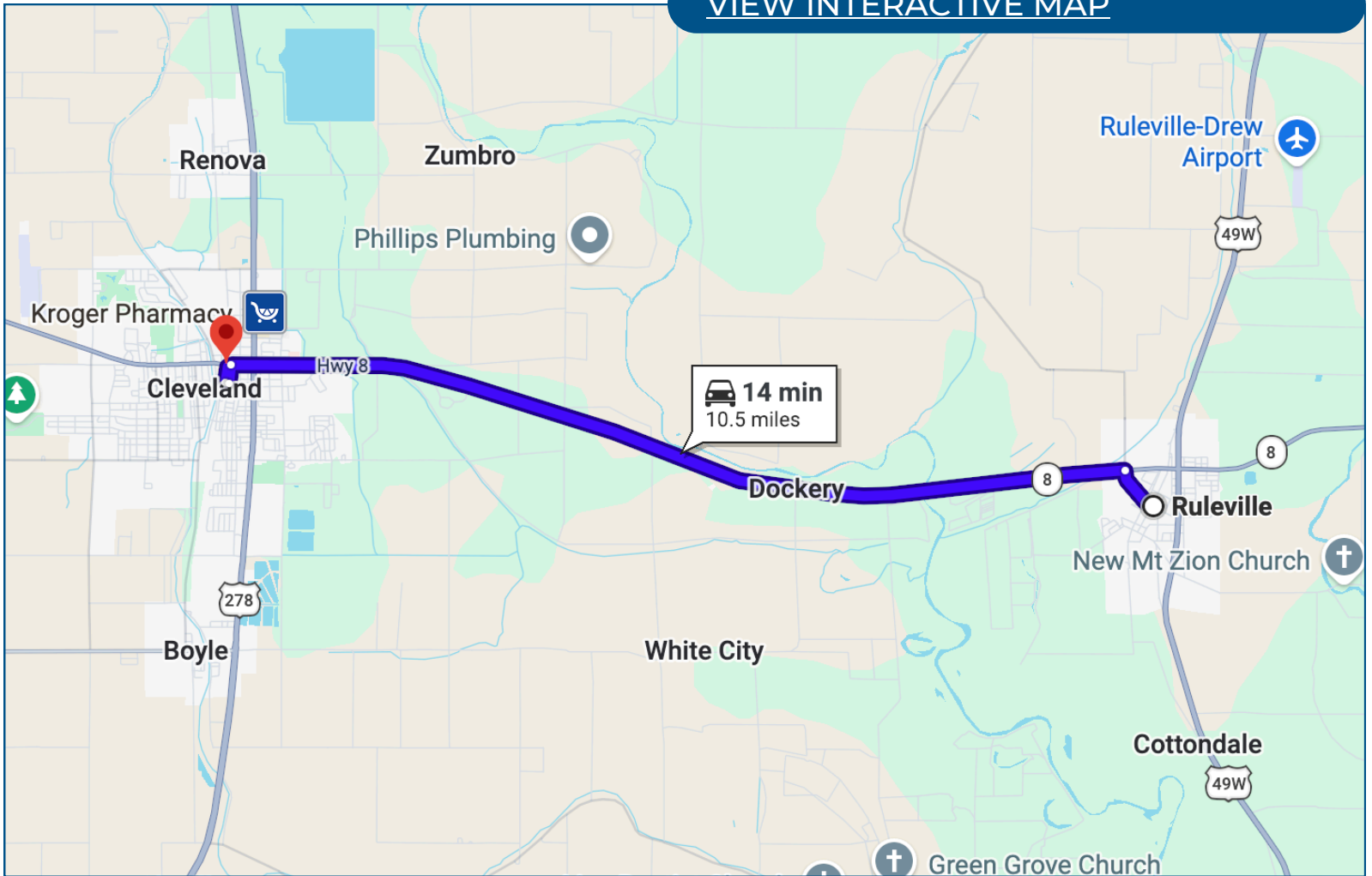
Bruce@TomSmithLand.com



Expect More. Get More.

Directional Map

[VIEW INTERACTIVE MAP](#)



Directions from Ruleville, MS:

Head toward N Ruby Ave for 0.5 miles. Turn left onto MS-8 W/Quiver St for 9.6 miles. Turn left onto Commerce Ave for 0.2 miles. In 200 feet, turn right onto North St, and in 0.2 miles, turn right onto Kamien Way. The destination will be on the left.

**BRUCE
WEST**
REALTOR®

Office: 662.771.1101
Cell: 662.873.3007

Bruce@TomSmithLand.com



Expect More. Get More.