

# Spacious 3-Story Home

Grenada County

2025 Hendrix Road, Coffeeville, MS 38922



**\$210,000**



**Tom  
Smith  
LAND AND  
HOMES**

**Expect More. Get More.**

# Property Information

## Location:

- 27 Minutes to Grenada, MS (20.5 Miles)

## Coordinates:

- 33.8543, -89.58515

## Property Use:

- Residential

# Property Highlights

- 9.7± Acres
- 3 Bedrooms
- 2.5 Bathrooms
- 2,450± SqFt
- Built in 2005
- Mixed Hardwoods
- Double Sink Vanity
- Walk-In Shower
- Front Porch



**ANTHONY STEEN**

REALTOR®, ALC®

O: 662.441.2500 | C: 662.645.5151

Anthony@TomSmithLand.com

**THOMAS LANG**

REALTOR®

O: 662.441.2500 | C: 662.715.1385

Thomas@TomSmithLand.com

**Expect More. Get More.**

*The Real Estate Experts You Can Trust!*

**601.898.2772 | TomSmithLandandHomes.com**

Information is believed to be accurate but not guaranteed.



# The Residence

2,450± SqFt

For sale is a 3-story home situated at 2025 Hendrix Road in the charming community of Coffeerville, Grenada County. This spacious residence has 2,450± square feet of heated and cooled living space, thoughtfully designed to provide comfort and style. Inside, you will find three generously sized bedrooms, offering plenty of room for relaxation and privacy. The home features two and a half well-appointed bathrooms, with the primary bathroom being a true highlight. It includes a jetted corner tub, a walk-in shower, and a double vanity, providing a perfect retreat for self-care and relaxation. Nestled on a 9.7± acre lot, the property is surrounded by beautiful mixed hardwoods, creating a serene and wooded atmosphere. This expansive outdoor space offers plenty of opportunities for recreation, gardening, or simply enjoying nature. Don't miss the chance to make this beautiful home and property your own! Call Anthony Steen or Thomas Lang today for a private showing of this great property!



**ANTHONY STEEN**

REALTOR®

O: 662.441.2500 | C: 662.645.5151

Anthony@TomSmithLand.com

**THOMAS LANG**

REALTOR®

O: 662.441.2500 | C: 662.715.1385

Thomas@TomSmithLand.com

**Expect More. Get More.**

*The Real Estate Experts You Can Trust!*

601.898.2772 | TomSmithLandandHomes.com

Information is believed to be accurate but not guaranteed.



# The Residence



**ANTHONY STEEN**

REALTOR®

O: 662.441.2500 | C: 662.645.5151

Anthony@TomSmithLand.com



**THOMAS LANG**

REALTOR®

O: 662.441.2500 | C: 662.715.1385

Thomas@TomSmithLand.com

**Expect More. Get More.**

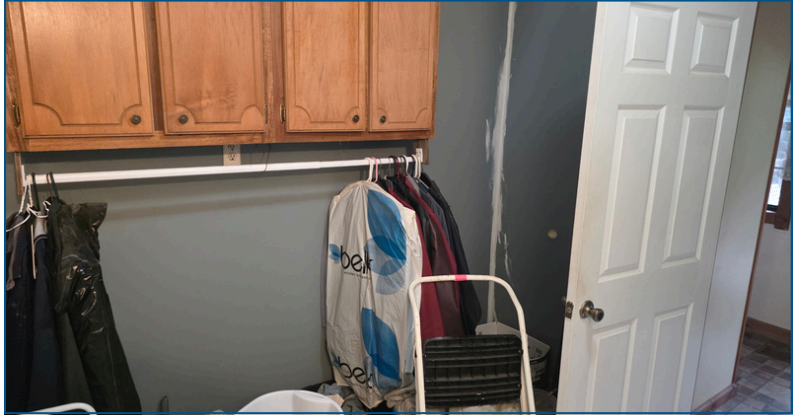
*The Real Estate Experts You Can Trust!*

[TomSmithLandandHomes.com](http://TomSmithLandandHomes.com)

Information is believed to be accurate but not guaranteed.



# The Residence



**ANTHONY STEEN**

REALTOR®

O: 662.441.2500 | C: 662.645.5151

Anthony@TomSmithLand.com

**THOMAS LANG**

REALTOR®

O: 662.441.2500 | C: 662.715.1385

Thomas@TomSmithLand.com

**Expect More. Get More.**

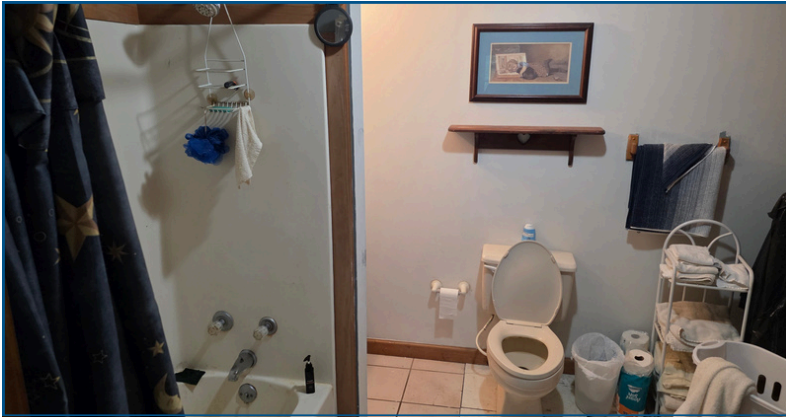
*The Real Estate Experts You Can Trust!*

**TomSmithLandandHomes.com**

Information is believed to be accurate but not guaranteed.



# The Residence



**ANTHONY STEEN**  
REALTOR®  
O: 662.441.2500 | C: 662.645.5151  
Anthony@TomSmithLand.com



**THOMAS LANG**  
REALTOR®  
O: 662.441.2500 | C: 662.715.1385  
Thomas@TomSmithLand.com

**Expect More. Get More.**

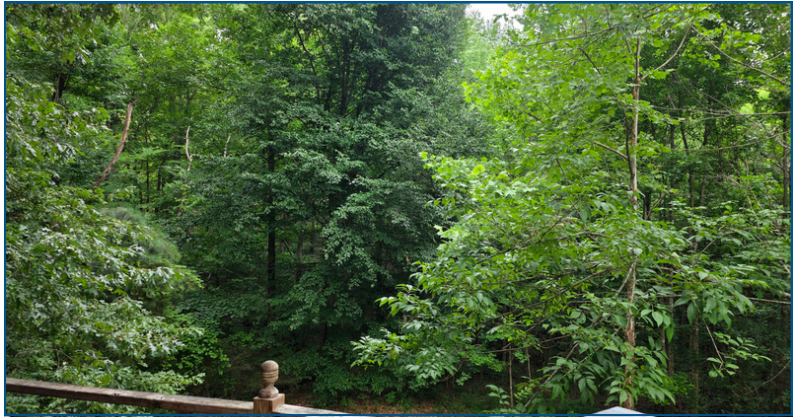
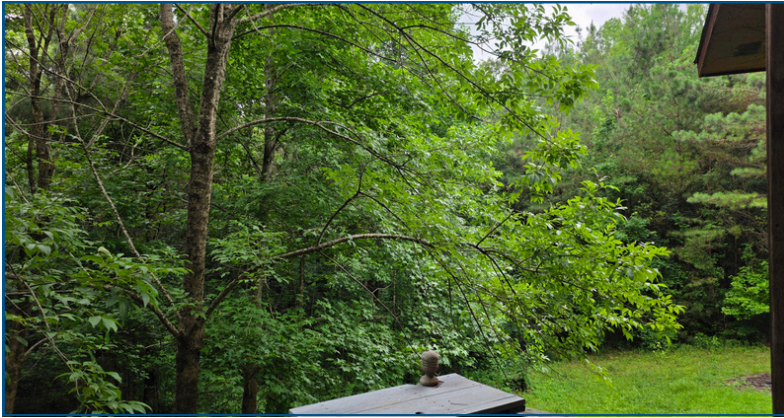
*The Real Estate Experts You Can Trust!*

[TomSmithLandandHomes.com](http://TomSmithLandandHomes.com)

Information is believed to be accurate but not guaranteed.



# The Residence



**ANTHONY STEEN**

REALTOR®

O: 662.441.2500 | C: 662.645.5151

Anthony@TomSmithLand.com



**THOMAS LANG**

REALTOR®

O: 662.441.2500 | C: 662.715.1385

Thomas@TomSmithLand.com

**Expect More. Get More.**

*The Real Estate Experts You Can Trust!*

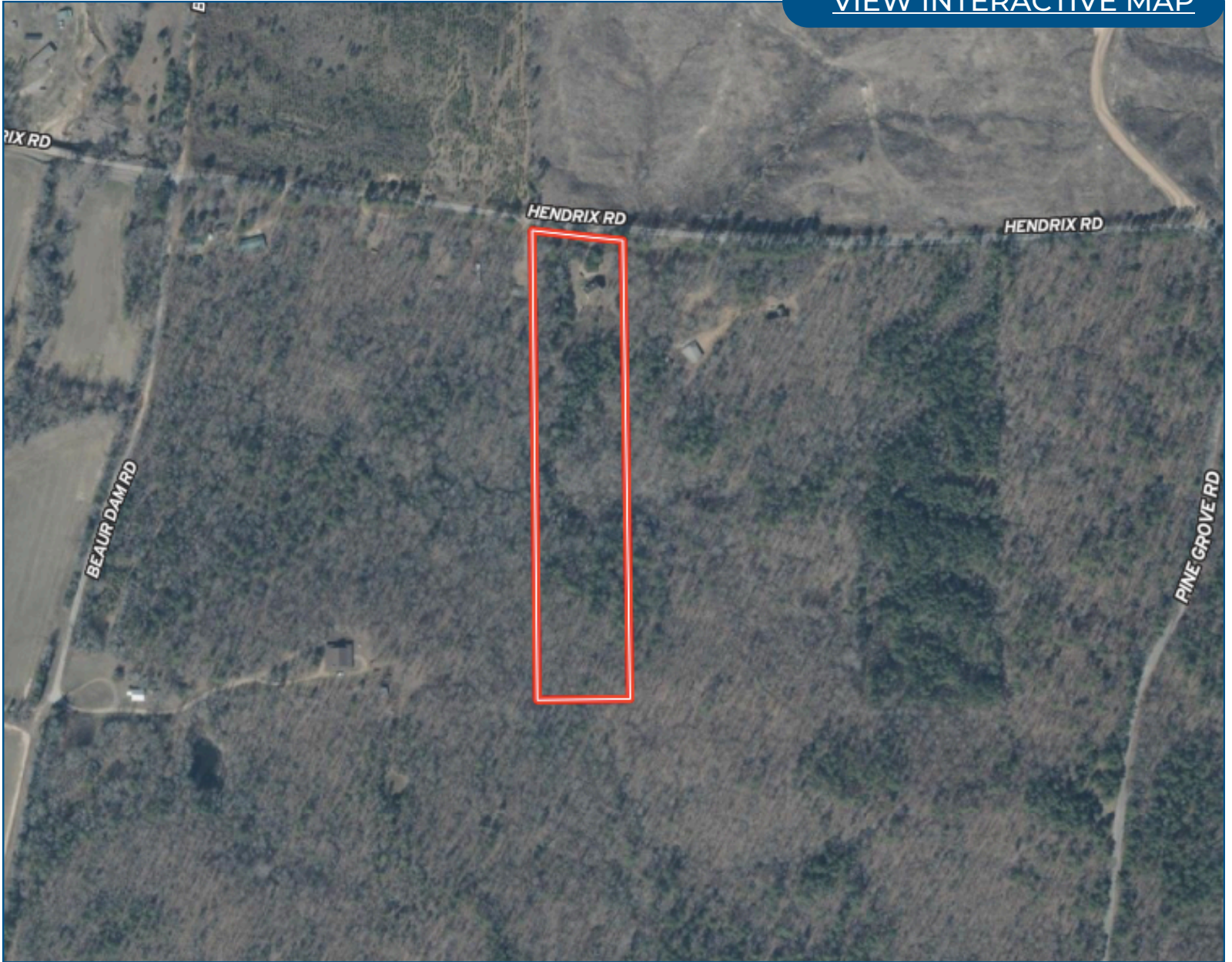
**TomSmithLandandHomes.com**

Information is believed to be accurate but not guaranteed.



# Aerial Map

[VIEW INTERACTIVE MAP](#)



**ANTHONY STEEN**

REALTOR®

O: 662.441.2500 | C: 662.645.5151

Anthony@TomSmithLand.com



**THOMAS LANG**

REALTOR®

O: 662.441.2500 | C: 662.715.1385

Thomas@TomSmithLand.com

**Expect More. Get More.**

*The Real Estate Experts You Can Trust!*

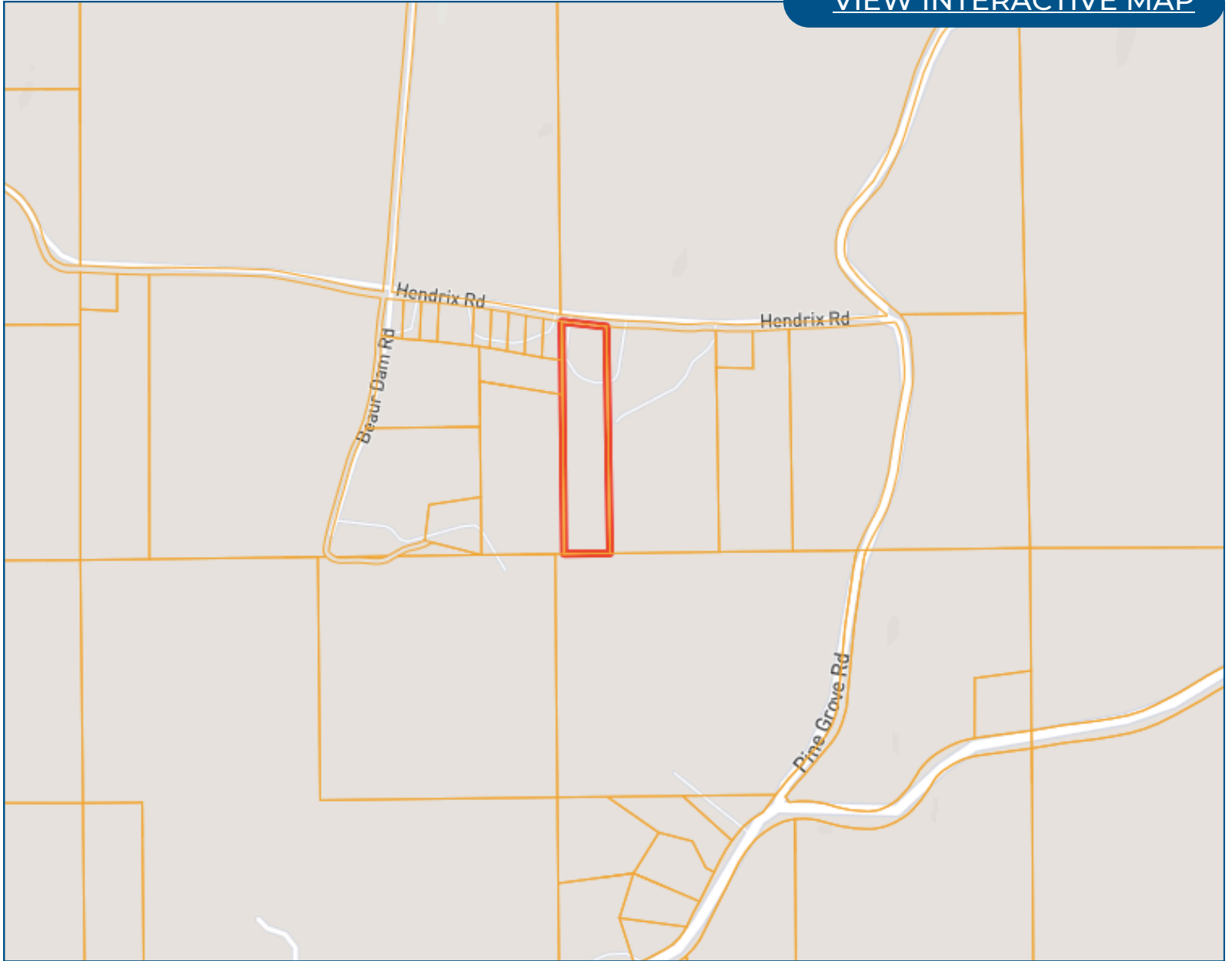
[TomSmithLandandHomes.com](http://TomSmithLandandHomes.com)

Information is believed to be accurate but not guaranteed.



# Ownership Map

[VIEW INTERACTIVE MAP](#)



**ANTHONY STEEN**

REALTOR®

O: 662.441.2500 | C: 662.645.5151

Anthony@TomSmithLand.com



**THOMAS LANG**

REALTOR®

O: 662.441.2500 | C: 662.715.1385

Thomas@TomSmithLand.com

**Expect More. Get More.**

*The Real Estate Experts You Can Trust!*

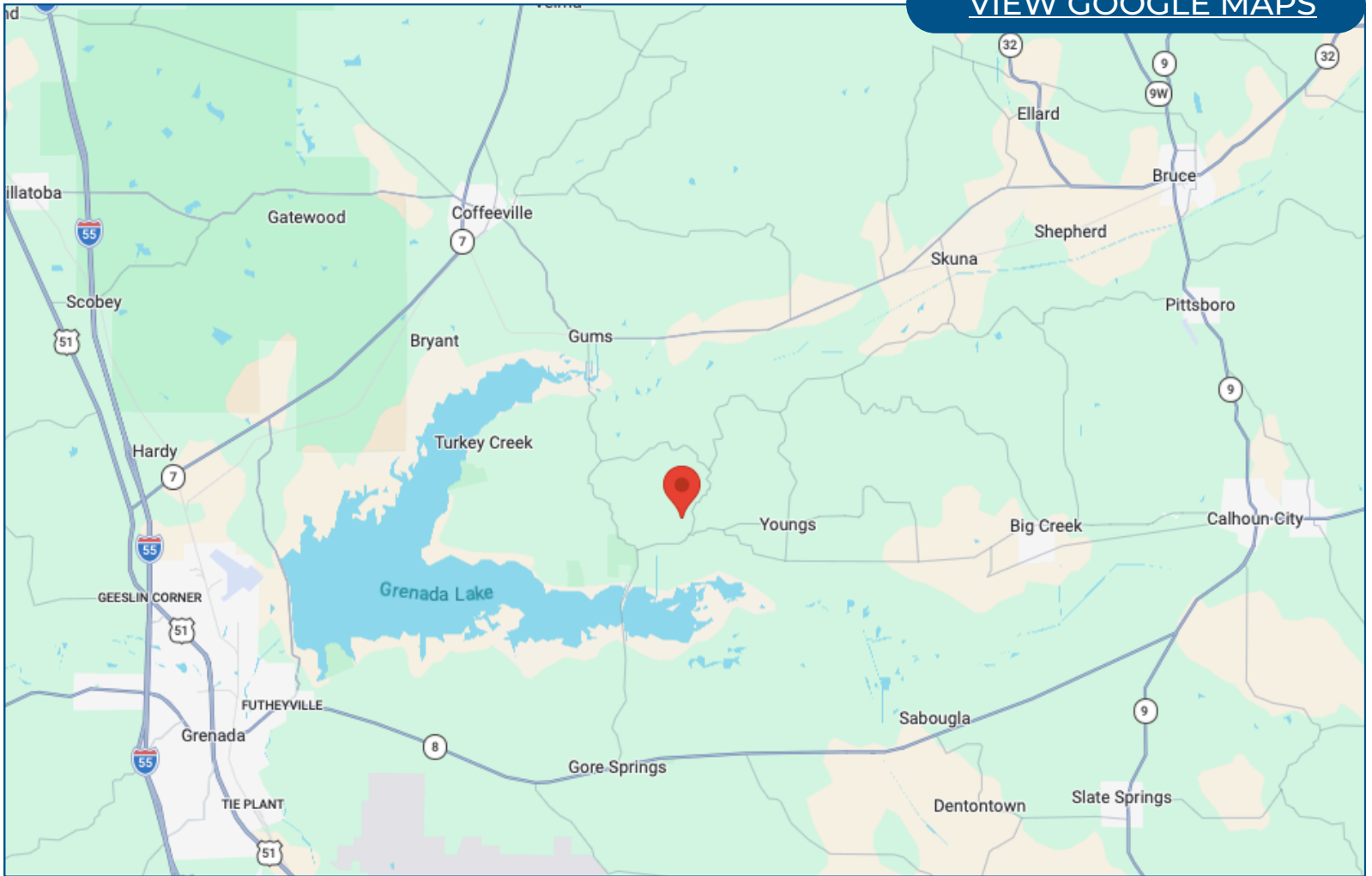
[TomSmithLandandHomes.com](http://TomSmithLandandHomes.com)

Information is believed to be accurate but not guaranteed.



# Directional Map

[VIEW GOOGLE MAPS](#)



## Directions from MS-7 & MS-330, Coffeerville, MS 38922

Travel toward Brower Road for 0.8 miles, then turn left onto Okahoma Street for 479 feet. Turn right onto MS-330 E for 4.6 miles. Turn right onto Elam S Road for 4.6 miles, then continue onto Gums Crossing Road for 0.7 miles. Turn left onto Hendrix Road. After 2.1 miles, the house will be on the right.



**ANTHONY STEEN**

REALTOR®

O: 662.441.2500 | C: 662.645.5151

Anthony@TomSmithLand.com

**THOMAS LANG**

REALTOR®

O: 662.441.2500 | C: 662.715.1385

Thomas@TomSmithLand.com

**Expect More. Get More.**

*The Real Estate Experts You Can Trust!*

[TomSmithLandandHomes.com](http://TomSmithLandandHomes.com)

Information is believed to be accurate but not guaranteed.

