

# Newly Renovated Home in Lake Caroline

122 Prescott Ridge  
Madison, MS 39110



**\$309,900**



Expect More. Get More.



# Property Highlights

- Located in the Villages at Lake Caroline
- 1,670 Sq Ft
- 3 Bedroom | 2 Bathrooms
- Newly Renovated
- 2-Car Garage
- Fenced Backyard

## Lake Caroline Amenities

- 835 Acre Lake
  - 120 Acres of dedicated fishing areas
- 59 Acre Lake designated for fishing and non-motorized boating
- Two Clubhouses
- Three Saltwater Pools
- Golf Course & Club
- Two Playgrounds
- 11 Acre Park with Walking Trail
- Tennis Courts
- Pickleball Courts
- Local Restaurant
- Three Marinas & A Dry Storage Facility



**ELLEN  
SMITH**

MANAGING BROKER

Office: 601.898.2772

Cell: 601.954.9395

Ellen@TomSmithHomes.com



Expect More. Get More.

**A Real Estate Expert You Can Trust**

TomSmithLandandHomes.com

Information is believed to be accurate but not guaranteed.

**601.898.2772 | TomSmithLandandHomes.co**

Information is believed to be accurate but not guaranteed.

2011-2021  
BEST  
BROKERAGE



# The Residence

1,670 Sq Ft

Newly renovated and move-in ready home in Lake Caroline! This 3 bedroom, 2 bath split plan offers an open, comfortable layout with a cozy fireplace anchoring the living area. The primary suite is privately located, with the additional bedrooms on the opposite side, perfect for a true split plan. Step outside to enjoy a fenced backyard that's great for pets, play, or relaxing evenings at home. Conveniently located in one of Madison County's most loved communities with fantastic neighborhood amenities.



**A Real Estate Expert  
You Can Trust!**

**ELLEN SMITH**

MANAGING BROKER

O: 601.898.2772 C: 601.954.9395

Ellen@TomSmithHomes.com

TomSmithLandandHomes.com



Expect More. Get More.

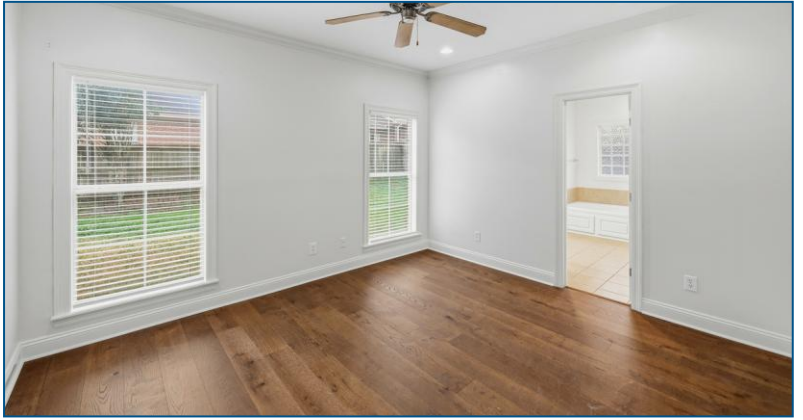
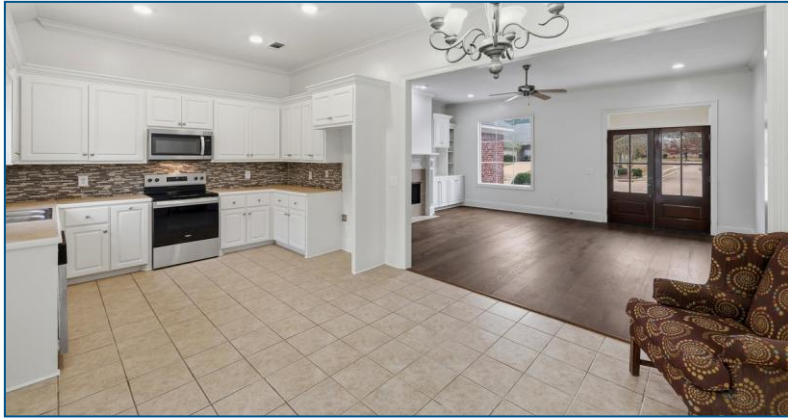


Information is believed to be accurate but not guaranteed.

**601.898.2772 | TomSmithLandandHomes.co**

Information is believed to be accurate but not guaranteed.

# The Residence



**A Real Estate Expert**  
*You Can Trust!*

**ELLEN SMITH**

MANAGING BROKER

O: 601.898.2772 C: 601.954.9395

Ellen@TomSmithHomes.com

TomSmithLandandHomes.com



Expect More. Get More.



Information is believed to be accurate but not guaranteed.

**TomSmithLandandHomes.co**

Information is believed to be accurate but not guaranteed.



# Exterior Photos



**A Real Estate Expert**  
*You Can Trust!*

**ELLEN SMITH**

MANAGING BROKER

O: 601.898.2772 C: 601.954.9395

Ellen@TomSmithHomes.com

TomSmithLandandHomes.com



Expect More. Get More.



Information is believed to be accurate but not guaranteed.

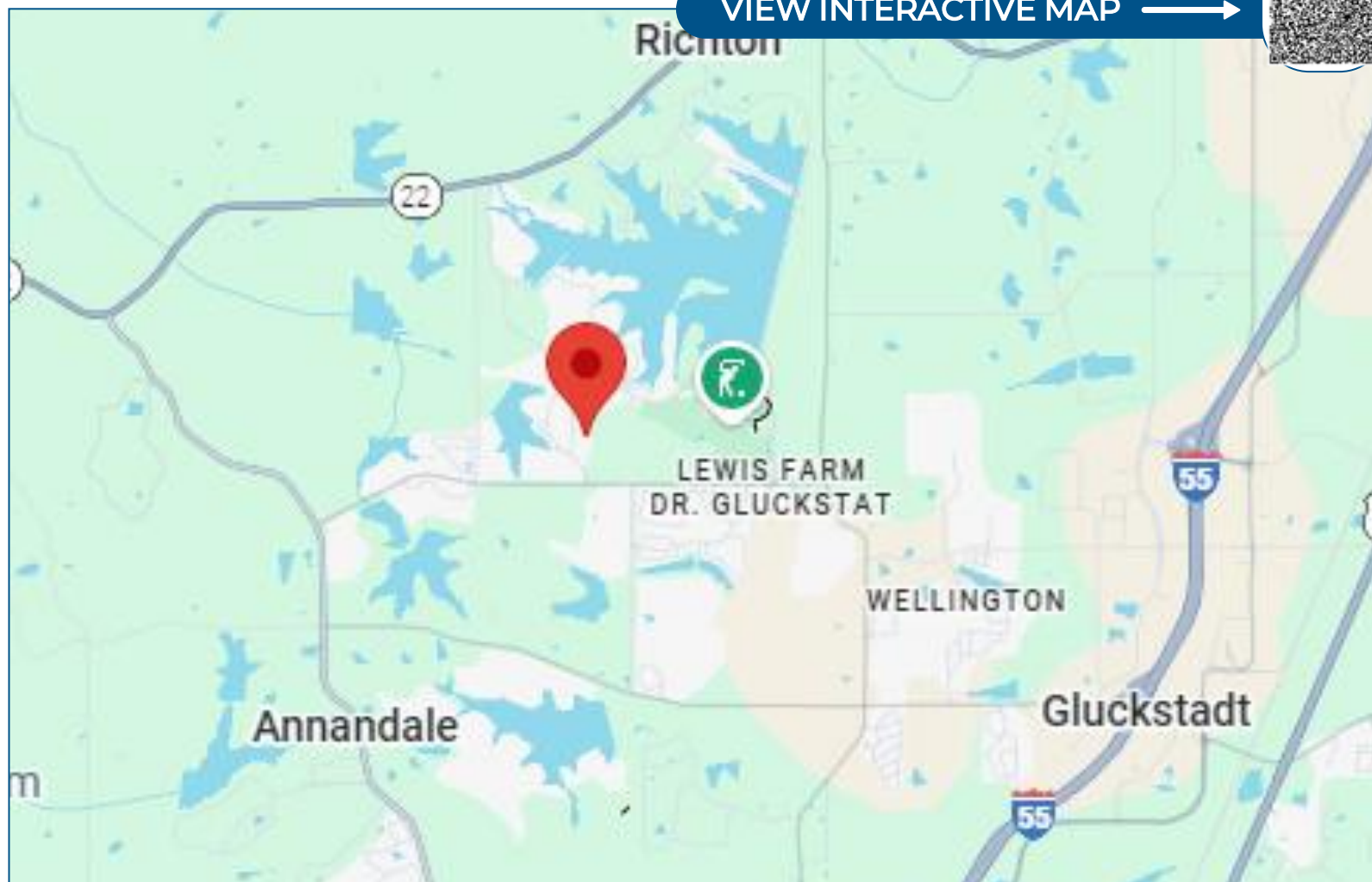
**TomSmithLandandHomes.co**

Information is believed to be accurate but not guaranteed.



# Directional Map

[VIEW INTERACTIVE MAP](#) →



**Directions from I-55 North:** Take the Gluckstadt Exit and turn left onto Gluckstadt Rd. In 1.8 mi, turn right onto Catlett Rd. In 1.5 mi, turn left onto Stribling Rd. Then in 1.5 mi, take a right onto Camden Crossing. After 0.2 mi, turn right onto Caroline Crossing. In 0.3 mi, take a right onto Prescott Ridge, and the destination will be on the left.

**A Real Estate Expert**  
*You Can Trust!*

**ELLEN SMITH**

MANAGING BROKER

O: 601.898.2772 C: 601.954.9395

Ellen@TomSmithHomes.com

TomSmithLandandHomes.com



Expect More. Get More.



Information is believed to be accurate but not guaranteed.

**TomSmithLandandHomes.com**

Information is believed to be accurate but not guaranteed.

# Listing Agent



## ELLEN SMITH

### OWNER & MANAGING BROKER

Ellen Brand Smith is originally from Chicago, Illinois and graduated from the University of Illinois, Champaign-Urbana, in 1988 with a BS in Economics. She then moved out to California, where she earned her MBA from Pepperdine University and began her business career with a Fortune 500 company in Los Angeles. Ellen later formed her own company, Brand Merchandising, which became a leading service company in the Western United States.

Ellen has lived all over the country, but has lived in Madison, MS with her husband, Tom, and their two daughters (one is married and one is in college) for 20 years. Mississippi is also where she discovered her passion for the real estate business and the local outdoor lifestyle. Together, Ellen and Tom opened Tom Smith Land & Homes to be the area's premier real estate brokerage. She manages the residential side of the business with a focus on homes and commercial properties throughout the region. Ellen has been selling real estate for 20 years to satisfied clients, periodically flipping houses, and has sold properties all over the State.

Naturally, Ellen brings her strong business savvy and detail-oriented approach to real estate. She loves helping clients make the most of their opportunities in this market. With Ellen as your real estate guide, you get the knowledge you need, the protection you deserve.

**OFFICE: 601.898.2772**

**CELL: 601.954.9395**

**Ellen@TomSmithHomes.com**

**CALL ELLEN  
TODAY!**

