

# 645 South Columbus Avenue

Louisville, MS

Winston County



## \$295,000



Expect More. Get More.

**DOYES  
HOLLAND**  
REALTOR®

Office: 662.268.6333  
Cell: 662.312.2165

**A Real Estate Expert  
You Can Trust!**

[TomSmithLandandHomes.co](http://TomSmithLandandHomes.co)

Information is believed to be accurate but not guaranteed.



# Property Information

## Location:

- Louisville, MS

## Property Use:

- Residential

## Coordinates:

- 33.1193, -89.05375

# Property Highlights

- 0.99 Acres
- 3,449 Sq. Feet, 5 BR/3B with a heated and cooled living space.
- Updated kitchen, sunroom sitting area, screened in back porch
- Property also features a fresh water 18 x36 foot pool
- Covered carport with separate storage room and firepit area
- Shaded backyard with partial privacy fence



Expect More. Get More.

**DOYES  
HOLLAND**  
REALTOR®

Office: 662.268.6333  
Cell: 662.312.2165

DHolland@TomSmithLand.com

**A Real Estate Expert  
You Can Trust!**



# The Residence

3,449 Sq. Feet

Step into timeless character and exceptional versatility with this beautifully maintained historic home, formerly operated as a successful Airbnb. Located just three blocks from Downtown Louisville, Mississippi, this spacious one-story residence offers a rare blend of charm, comfort, and income potential. The home features 5 bedrooms, 3 full bathrooms, and 3,449 square feet of heated and cooled living space. Original hardwood floors run throughout, adding warmth and authenticity to every room. The expansive layout includes a large main living area plus a separate second living space, ideal for entertaining, hosting guests, or accommodating multi-generational living. The updated kitchen is both functional and inviting, offering abundant cabinetry and a separate dining area. Additional interior highlights include a sunroom sitting area, perfect for relaxing year-round and enjoying natural light.



**DOYES  
HOLLAND**  
REALTOR®

Office: 662.268.6333

Cell: 662.312.2165

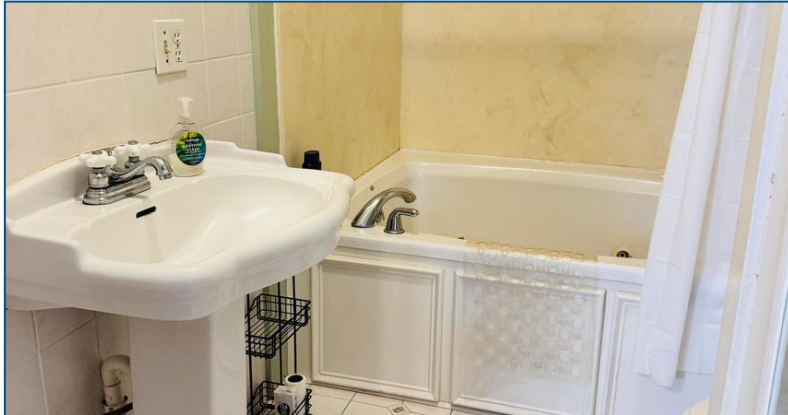
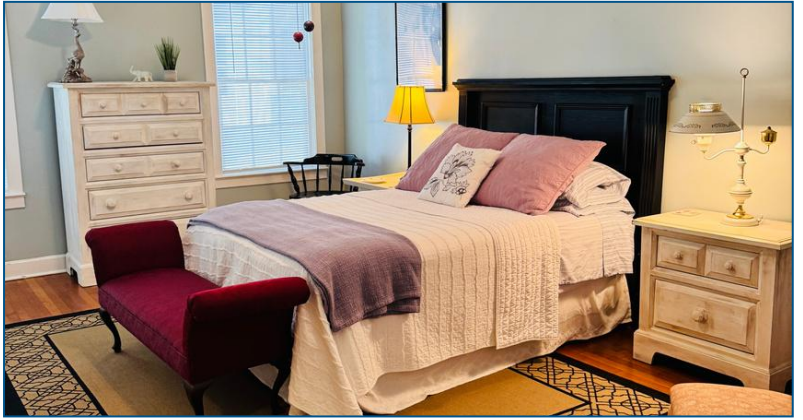
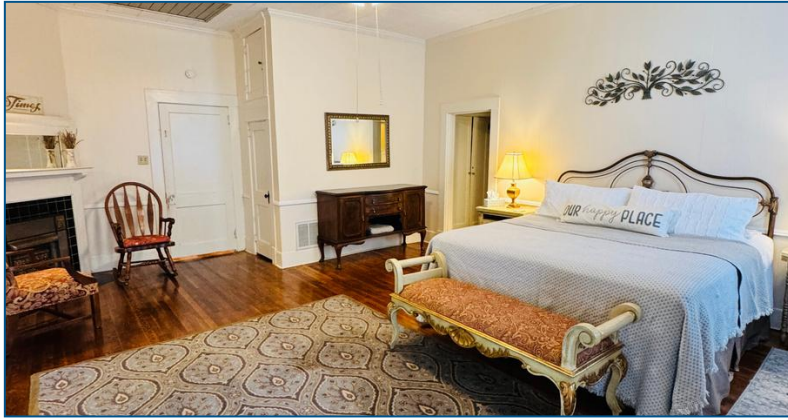
DHolland@TomSmithLand.com

**Tom  
Smith  
LAND AND  
HOMES**

Expect More. Get More.



# The Residence



**DOYES  
HOLLAND**  
REALTOR®

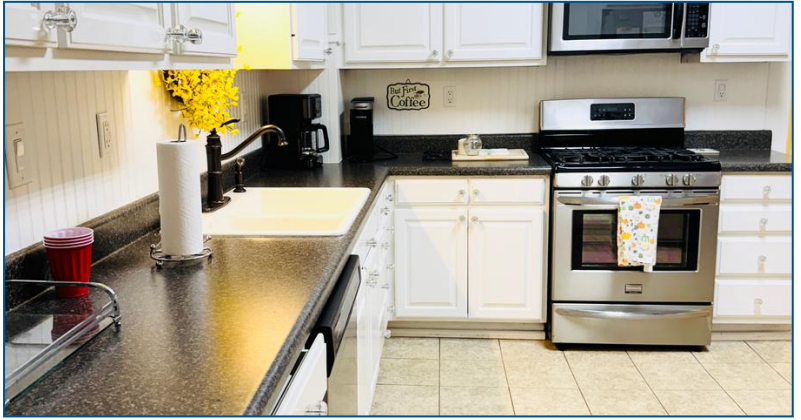
Office: 662.268.6333  
Cell: 662.312.2165

DHolland@TomSmithLand.com





# The Residence



**DOYES  
HOLLAND**  
REALTOR®

Office: 662.268.6333

Cell: 662.312.2165

DHolland@TomSmithLand.com

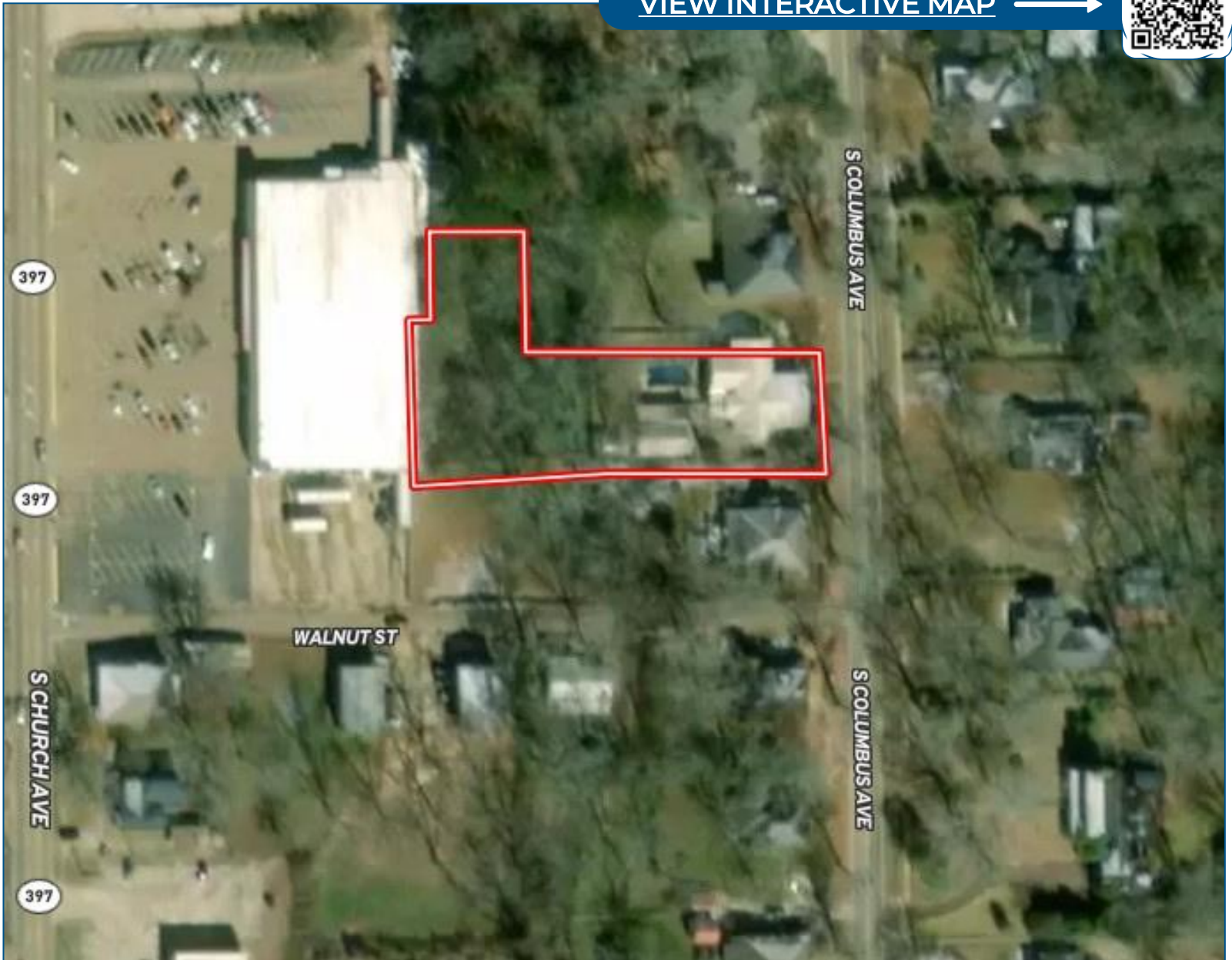
**Tom  
Smith  
LAND AND  
HOMES**

Expect More. Get More.



# Aerial Map

[VIEW INTERACTIVE MAP](#) →



**DOYES  
HOLLAND**  
REALTOR®

Office: 662.268.6333

Cell: 662.312.2165

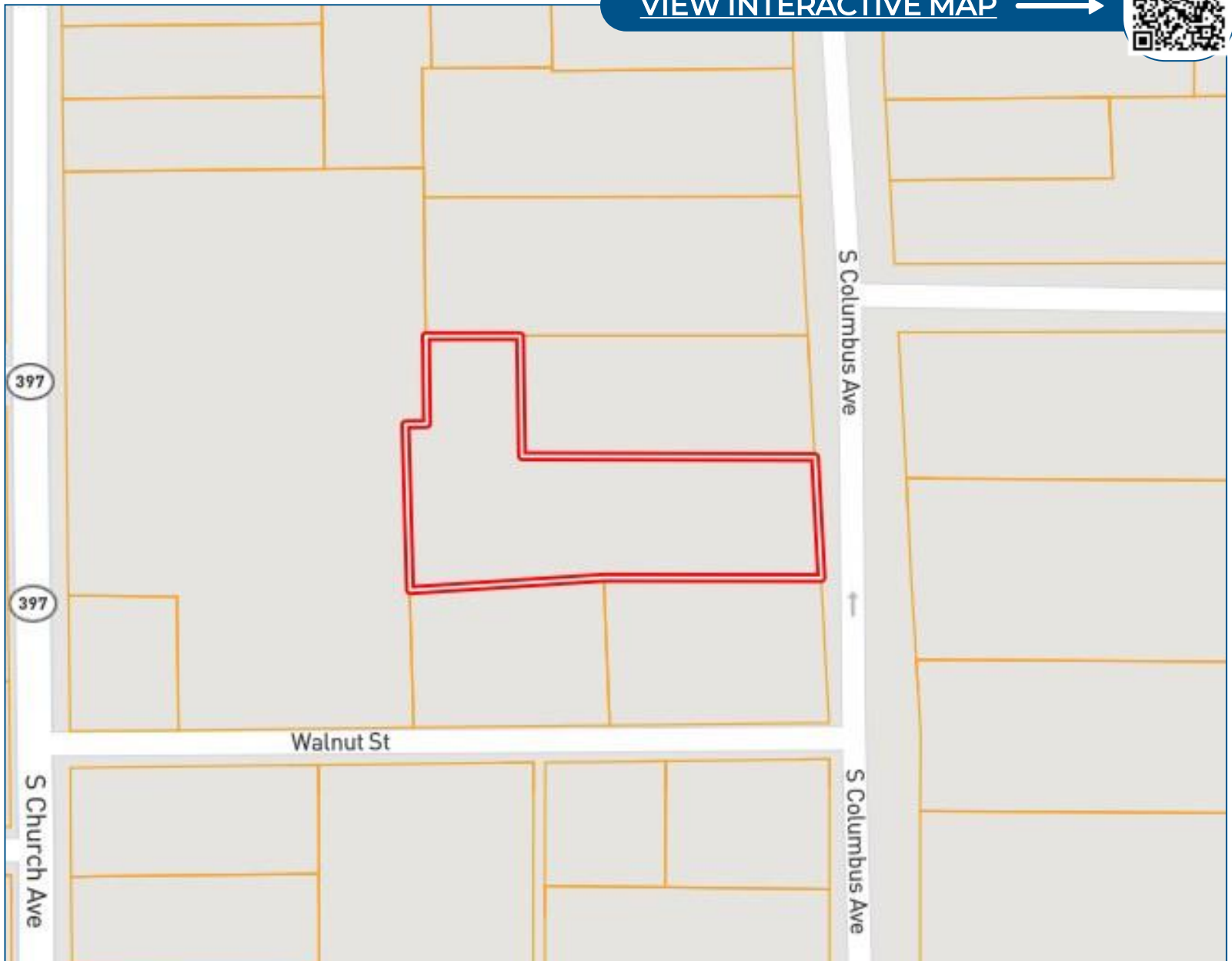
DHolland@TomSmithLand.com



Expect More. Get More.

# Ownership Map

[VIEW INTERACTIVE MAP](#) →



**DOYES  
HOLLAND**  
REALTOR®

Office: 662.268.6333

Cell: 662.312.2165

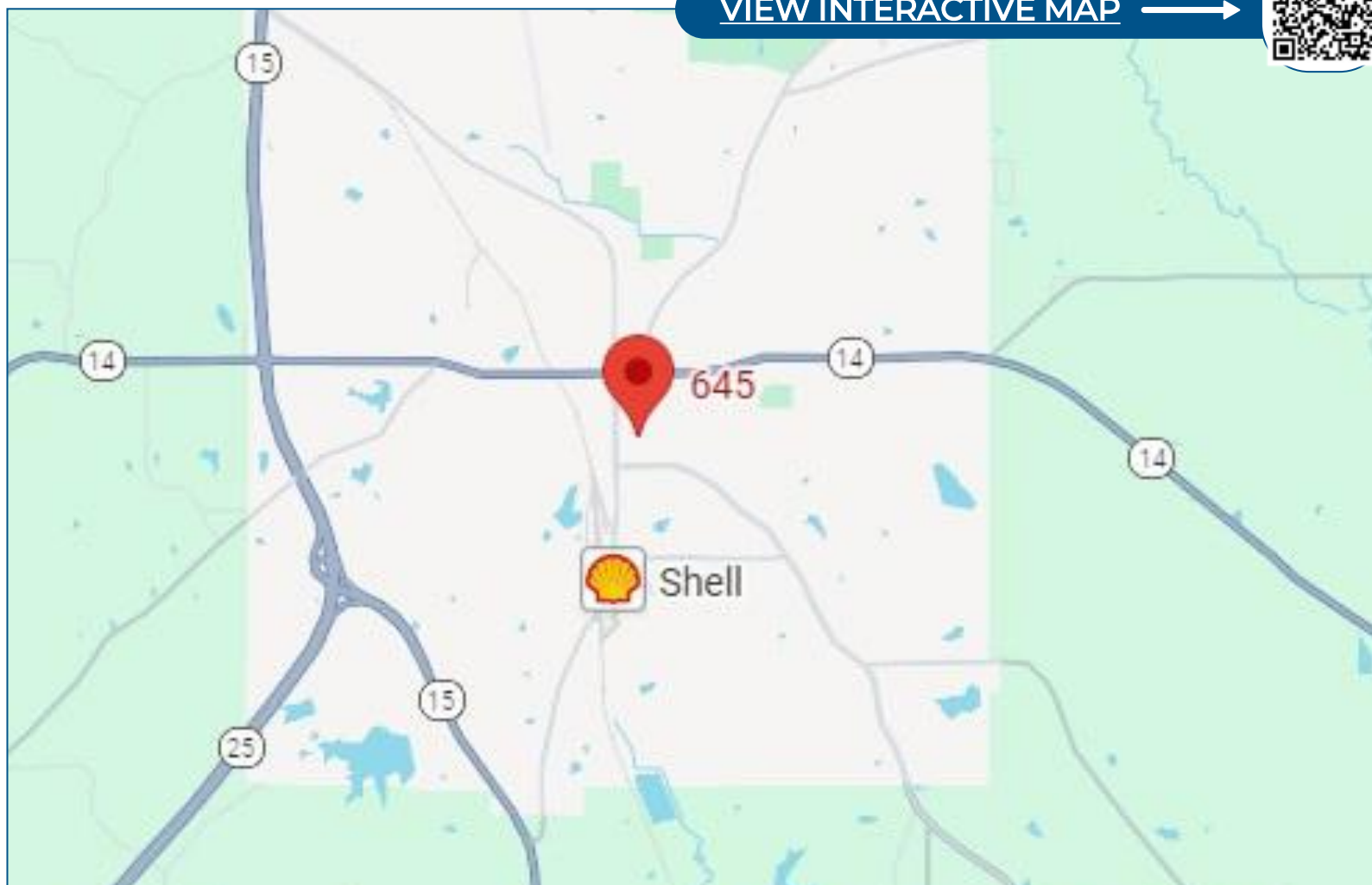
DHolland@TomSmithLand.com



Expect More. Get More.

# Directional Map

[VIEW INTERACTIVE MAP](#) →



Directions from HWY 25 and 14 Intersection: Head east toward W Main St for 1.9 miles. Turn right onto S Columbus Ave and continue for 0.3 Miles. Continue for 3 blocks and the property will be on the right side of the road.

**DOYES  
HOLLAND**  
REALTOR®

Office: 662.268.6333

Cell: 662.312.2165

DHolland@TomSmithLand.com



Expect More. Get More.