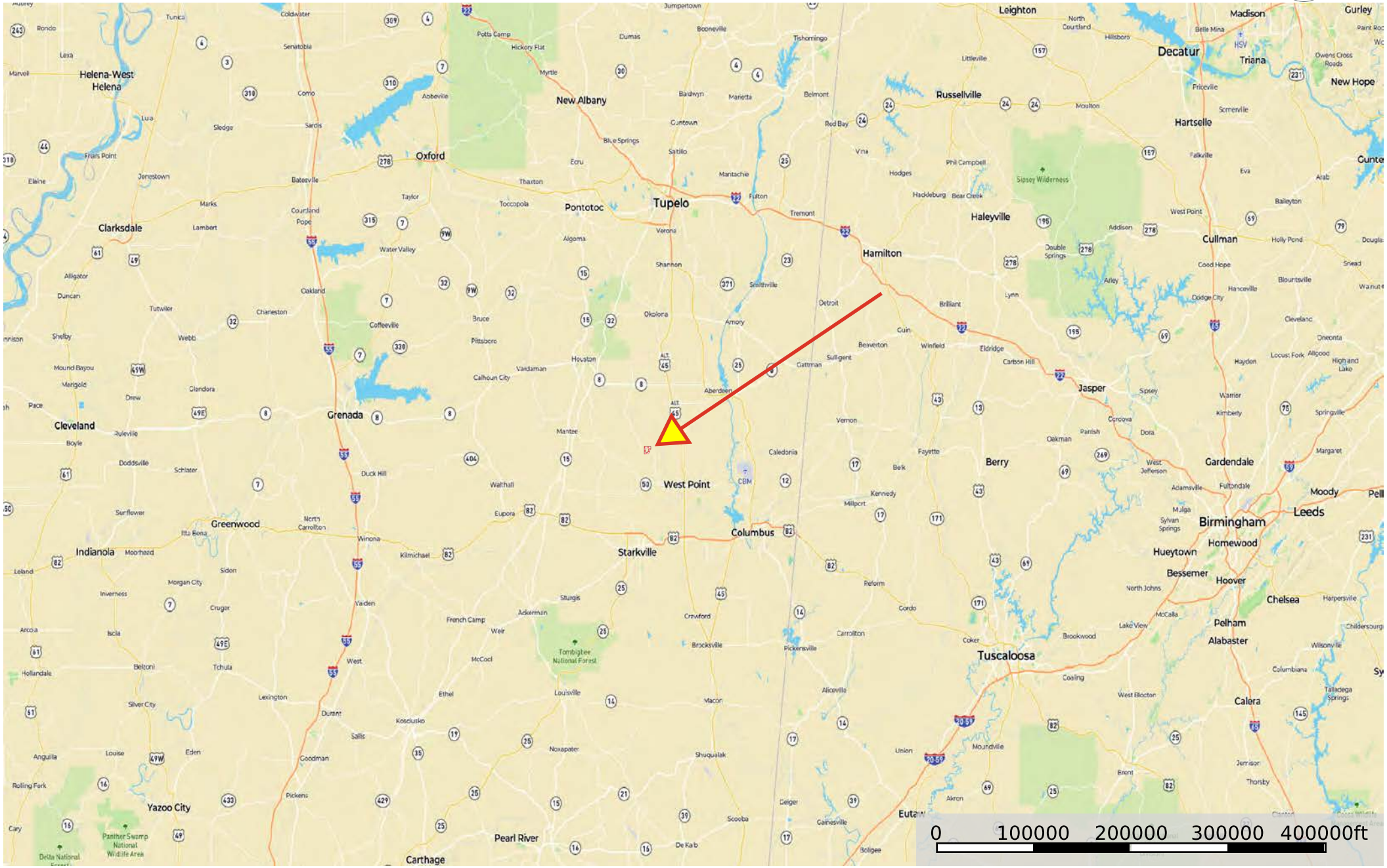


527 Acres - Clay County MS

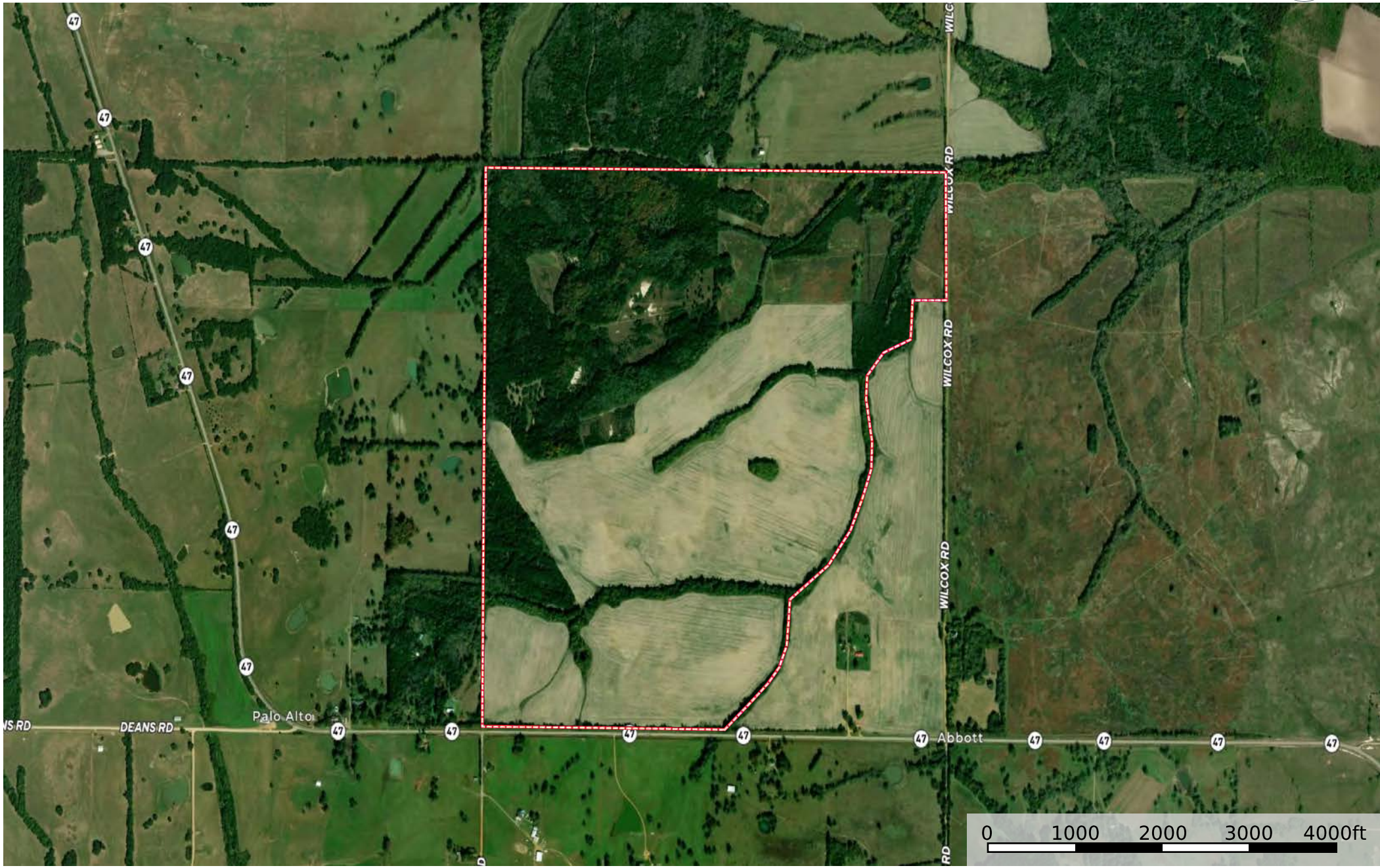
Mississippi, AC +/-



Boundary

527 Acres - Clay County MS

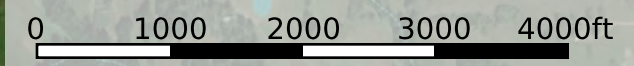
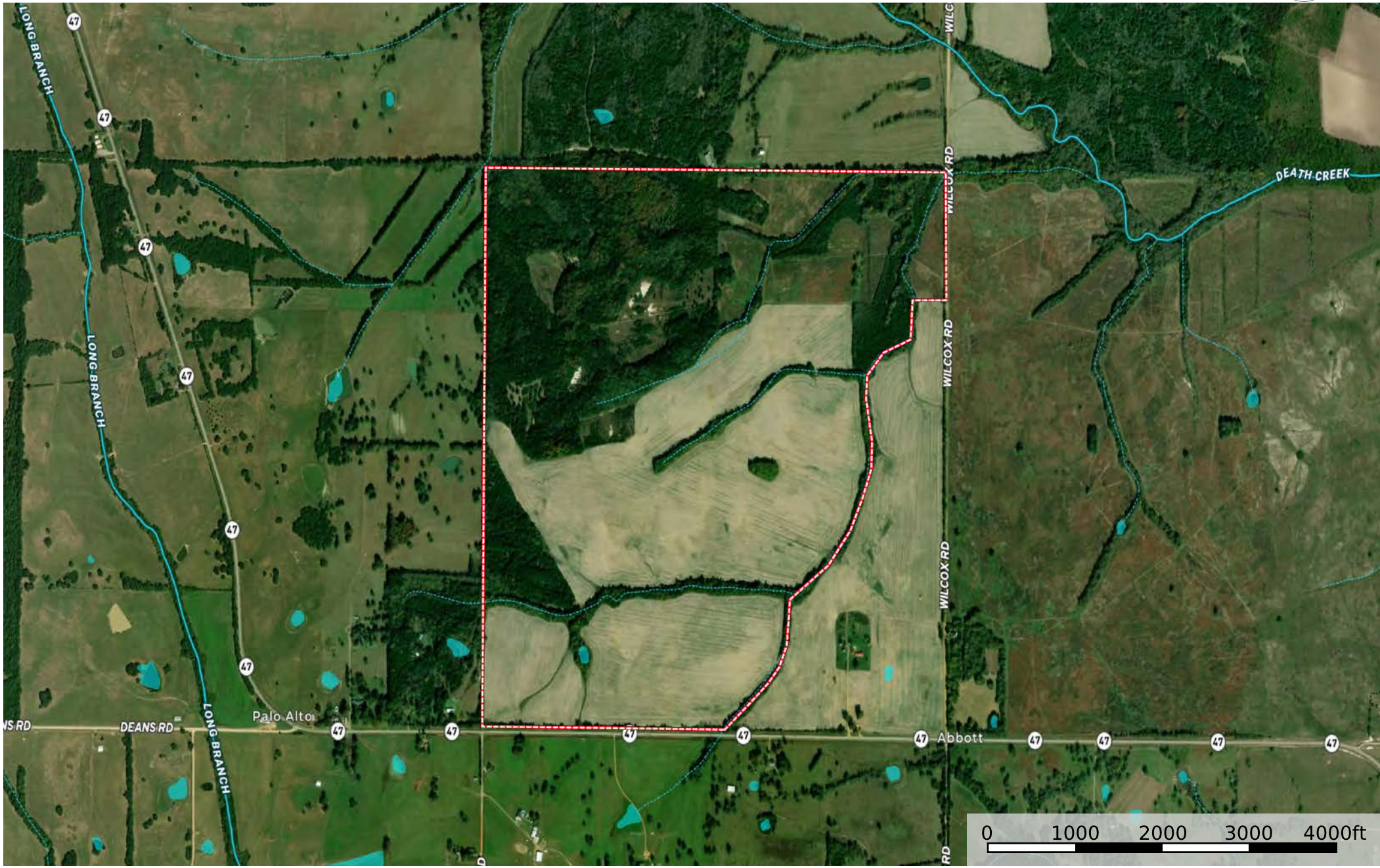
Mississippi, AC +/-



Boundary

527 Acres - Clay County MS

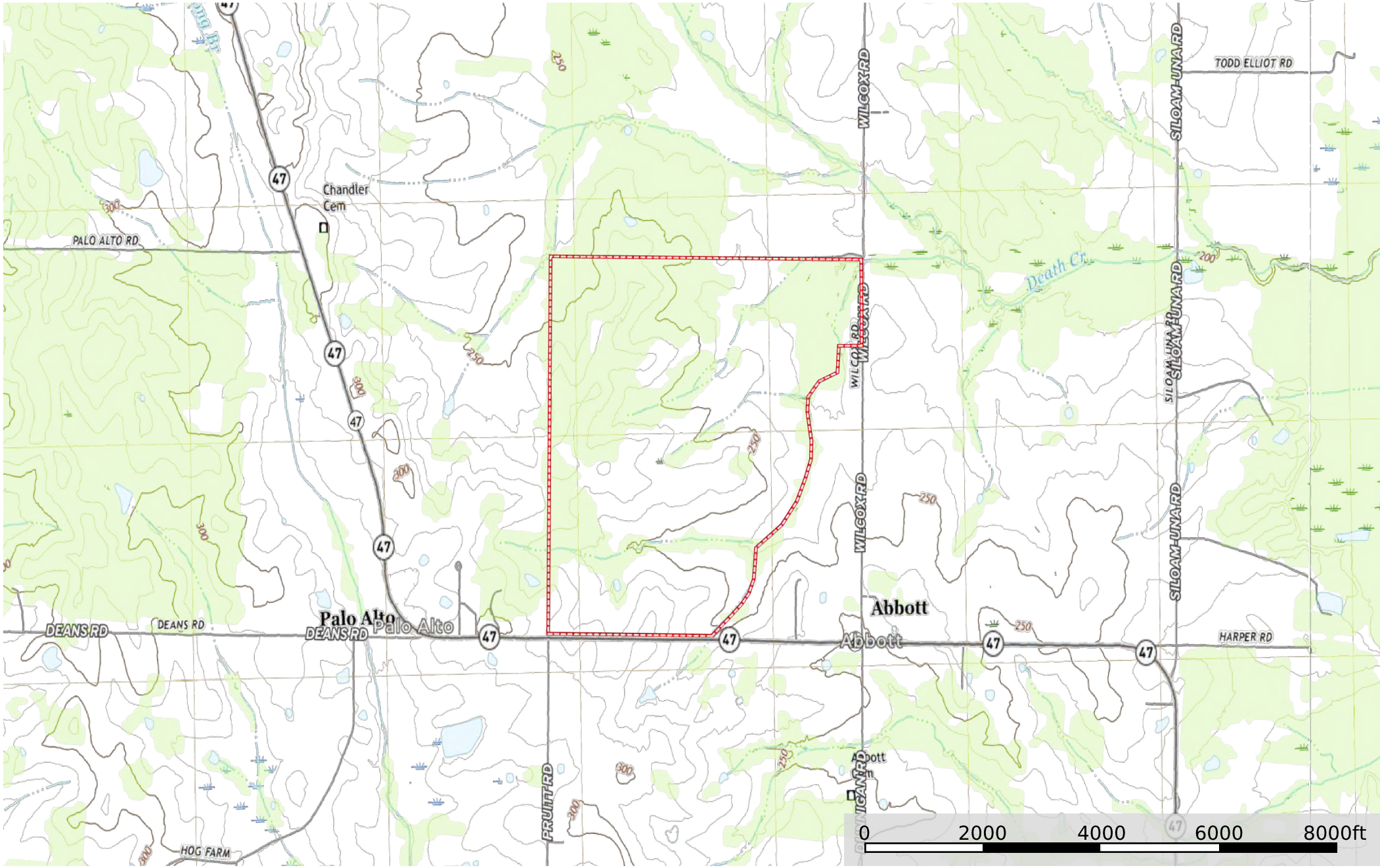
Mississippi, AC +/-



- Boundary
- Stream, Intermittent
- River/Creek
- Water Body

527 Acres - Clay County MS

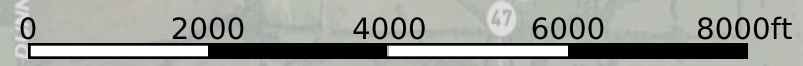
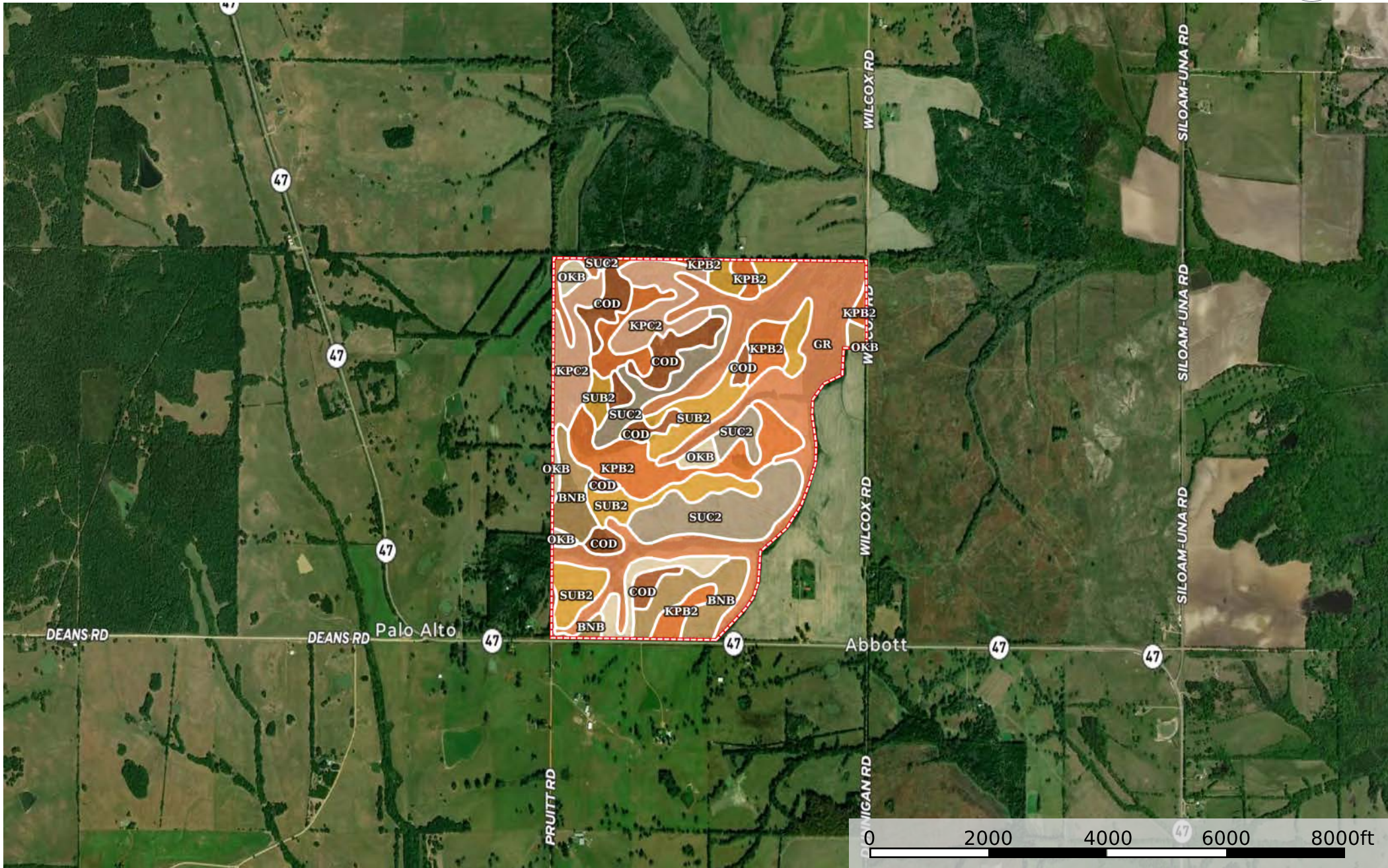
Mississippi, AC +/-



Boundary

527 Acres - Clay County MS

Mississippi, AC +/-



Boundary

Boundary 520.48 ac

SOIL CODE	SOIL DESCRIPTION	ACRES	%	CPI	NCCPI	CAP
Gr	Griffith silty clay, 0 to 2 percent slopes, occasionally flooded	134.97	25.93	0	45	2w
KpB2	Kipling silt loam, 2 to 5 percent slopes, moderately eroded	80.38	15.44	0	58	3w
SuB2	Sumter silty clay, 2 to 5 percent slopes, moderately eroded	69.36	13.33	0	29	3e
SuC2	Sumter silty clay, 5 to 12 percent slopes, moderately eroded	68.01	13.07	0	29	6e
KpC2	Kipling silt loam, 5 to 8 percent slopes, moderately eroded	49.11	9.44	0	60	4e
CoD	Chalk outcrop-Demopolis complex, 5 to 15 percent slopes	47.41	9.11	0	22	8s
BnB	Binnsville silty clay loam, 2 to 6 percent slopes	46.66	8.96	0	26	6e
OkB	Okolona silty clay, 1 to 3 percent slopes	24.58	4.72	0	52	2e
TOTALS		520.48(*)	100%	-	40.73	3.9

(*) Total acres may differ in the second decimal compared to the sum of each acreage soil. This is due to a round error because we only show the acres of each soil with two decimal.

