

FOR SALE

JEFFERSON COUNTY, NE

211 ACRES

CROP & PASTURE LAND

\$1,095,000



ABOUT THIS FARM

This farm offers a total of 211.62 acres. 63.1 acres pasture and 140.22 dryland crop ground available for immediate possession. The west part of the farm has new drain tile. The farm has regular terraces and step terraces. The ground is very productive and has been well maintained. The pasture has remained ungrazed for the past 2 years. It is a very clean pasture with very few trees. Barbed wire fence is good and there is rural waterline on the north side of the property. Rural water is not connected to this property and it will be the buyer's responsibility to obtain the water connection.

Excellent hunting area with remote location off the road and next to a body of water. It has all the features to attract water fowl and other wildlife.

CONTACT US
402-806-2579
NFN LAND
NFNLAND.COM



LAND DETAILS

Legal Description:

SEC 26-2-1 NW ¼ EX FR (131.68 A)
& E ½ SW ¼ (80 A)

Total Acres:

211.62

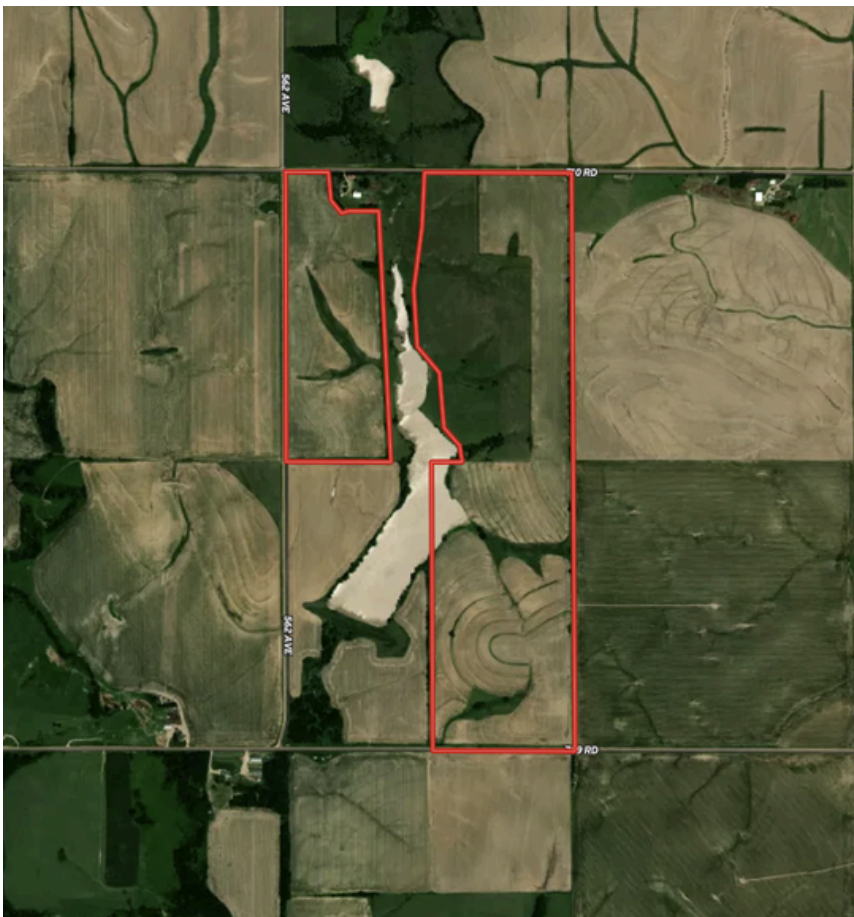
Zoning:

AG

2024 RE Tax:

\$5183.24

MAP & LINKS



From Fairbury, NE go west 6 miles on HWY 136 to 562nd Ave. Go south 2 miles to 710th Rd. This will put you at the northwest corner of the property.

Scan here to view
the interactive map



Scan here to
view the video

