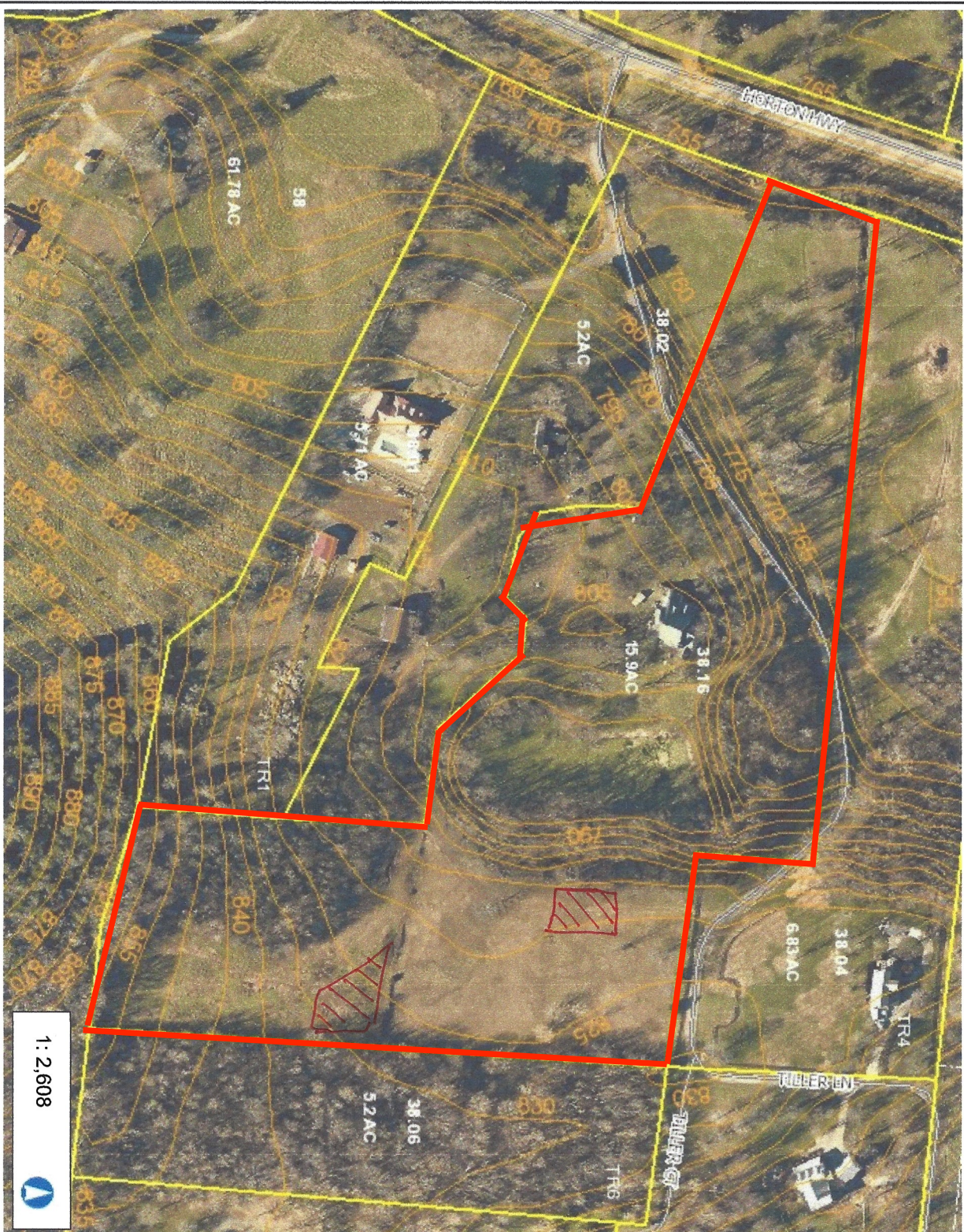


Tools & Features Demonstration Site



1 : 2,608

This map is a user generated static output from an Internet mapping site and is for reference only. Data layers that appear on this map may or may not be accurate, current, or otherwise reliable.

0.1
0
0.04
0.1 Miles
NAD_1983_StatePlane_Tennessee_FIPS_4100_Feet
© Latitude Geographics Group Ltd.

Legend

- Parcels
- Parcel Numbers
- Parcel Acreage
- Subdivision Name
- Lot Numbers
- Group Corner Annotation
- Control Map
- Notes
- Miscellaneous
- Easement
- Exemptions
- Conflicts
- Lines
- 5ft Contours
- Corporate Limits
- BRENTWOOD
- FAIRVIEW
- FRANKLIN
- NOLLENSVILLE
- SPRING HILL
- THOMPSONS STATION
- Parks
- Centerlines
- <all other values>
- INTERSTATE
- ACCESS

Notes

Approximate area with suitable soil

EARTHSEARCH SOIL CONSULTING, LLC

2000 Mallory Ln.
Suite 130-306
Franklin, TN 37067
(615) 210-5523

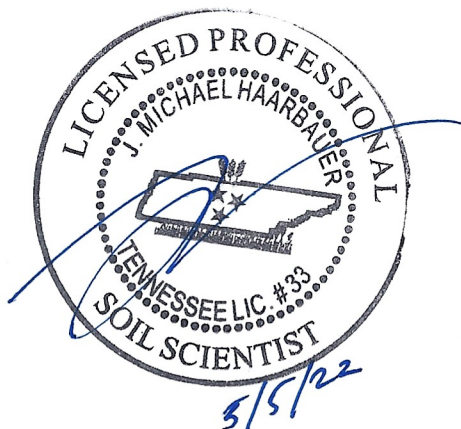
05/05/22

To whom it may concern,

This letter is to verify that a preliminary soil evaluation was performed at 8992 Horton Hwy. in Williamson Co. The soil on this tract was evaluated for subsurface sewage disposal possibilities. Two areas of suitable soil were located on the property. The soil was identified as the Stiversville series with an estimated absorption rate of 60 minutes per inch. Each area appeared to be about 15,000 sq. ft.+. Depending on final soil mapping results, each area should be adequate for a four to five bedroom septic disposal area. The approximate areas are shown on the satellite image provided and are marked with orange pin flags onsite. **These findings are based on a preliminary evaluation only. Extra high intensity soil mapping, property line and easement locations will be required for final approvals. Only the Williamson County Department of Sewage Disposal has the authority to determine the number of bedrooms and system approvals.** For any questions please contact me at 615-210-5523.

Sincerely,

J. Michael Haarbauer



Tools & Features Demonstration Site



1 : 2,608

0.1
0
0.04
0.1 Miles

This map is a user generated static output from an Internet mapping site and is for reference only. Data layers that appear on this map may or may not be accurate, current, or otherwise reliable.
THIS MAP IS NOT TO BE USED FOR NAVIGATION

Legend

- Parcels
- Parcel Numbers
- Parcel Acreage
- Subdivision Name
- Lot Numbers
- Group Corner Annotation
- Control Map
- Notes
- Miscellaneous
- Easement
- Exemptions
- Conflicts
- Lines
- 5ft Contours
- Corporate Limits
- BRENTWOOD
- FAIRVIEW
- FRANKLIN
- NOLENSVILLE
- SPRING HILL
- THOMPSONS STATION
- Parks
- Centerlines
- <all other values>
- INTERSTATE
- ACCESS

Notes

Approximate area with suitable soil