

Charming Brick Home

611 Magnolia Drive

Indianola, Sunflower County, MS



\$204,250



**Tom
Smith
LAND AND
HOMES**

Expect More. Get More.

Property Information

Location:

- Indianola Bayou Acres Neighborhood

Property Use:

- Residential

Coordinates:

- 33.4524, -90.6407

Property Highlights

- 0.35± Acre Corner Lot
- 2,480 sq. ft.
- 3 Bedrooms, 2.5 Bathrooms
- Brick Exterior
- Central HVAC
- Two Car Garage
- Private Fenced Backyard



Expect More. Get More.

**A Real Estate Expert
You Can Trust!**

**EMERSON
LOVELACE**
REALTOR®

Office: 662.441.2500
Cell: 601.715.3302

Emerson@TomSmithLand.com



The Residence

2,480± sq. ft.

Welcome to this well-maintained brick home in Indian Bayou Acres. Built in 1950 and updated for today's lifestyle, it blends original character with modern comfort.

The home offers approximately 2,480 adjusted square feet (2,250 base) with three bedrooms, two full baths, and one half bath—plenty of room to spread out and entertain.

Inside, you'll find hardwood and ceramic tile floors, a gas log fireplace, and updated kitchen and bathrooms. The kitchen features stainless steel appliances, modern finishes, and generous counter space for everyday cooking or hosting friends and family. Central HVAC keeps the home comfortable year-round.

Set on a 0.35-acre corner lot (167.4 x 90), the outdoor space is just as inviting. Enjoy mornings on the front porch or relax in the fenced backyard with a wooden deck that's ready for cookouts or quiet evenings outside. A two-car garage, classic brick exterior, and mature landscaping complete the picture. This is a solid, move-in-ready home in a well-established neighborhood.



**EMERSON
LOVELACE**
REALTOR®

Office: 662.441.2500

Cell: 601.715.3302

Emerson@TomSmithLand.com



The Residence



**EMERSON
LOVELACE**
REALTOR®

Office: 662.441.2500

Cell: 601.715.3302

Emerson@TomSmithLand.com



Expect More. Get More.

Aerial Map

[VIEW INTERACTIVE MAP](#) →



**EMERSON
LOVELACE**
REALTOR®

Office: 662.441.2500

Cell: 601.715.3302

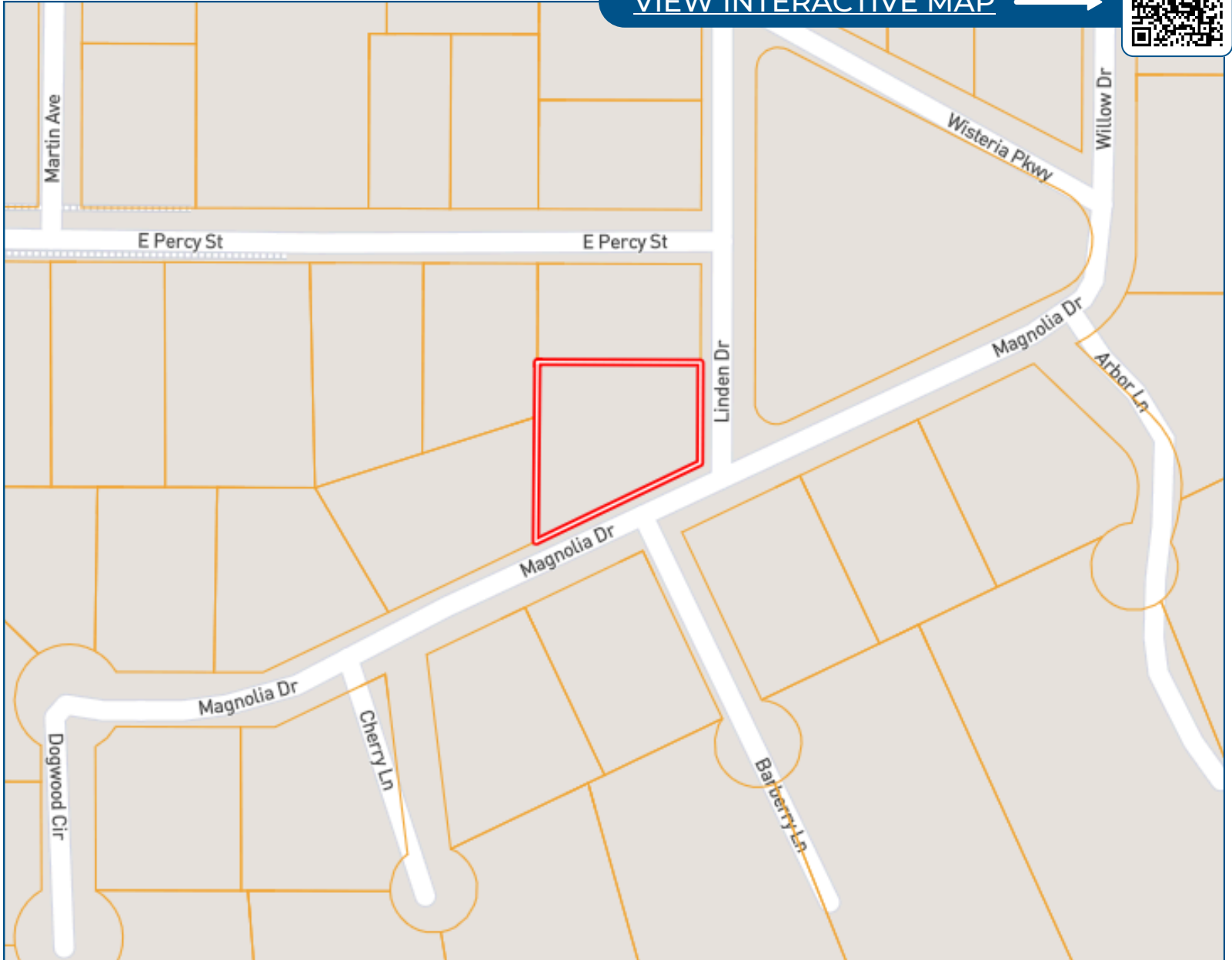
Emerson@TomSmithLand.com



Expect More. Get More.

Ownership Map

[VIEW INTERACTIVE MAP](#) →



**EMERSON
LOVELACE**
REALTOR®

Office: 662.441.2500
Cell: 601.715.3302

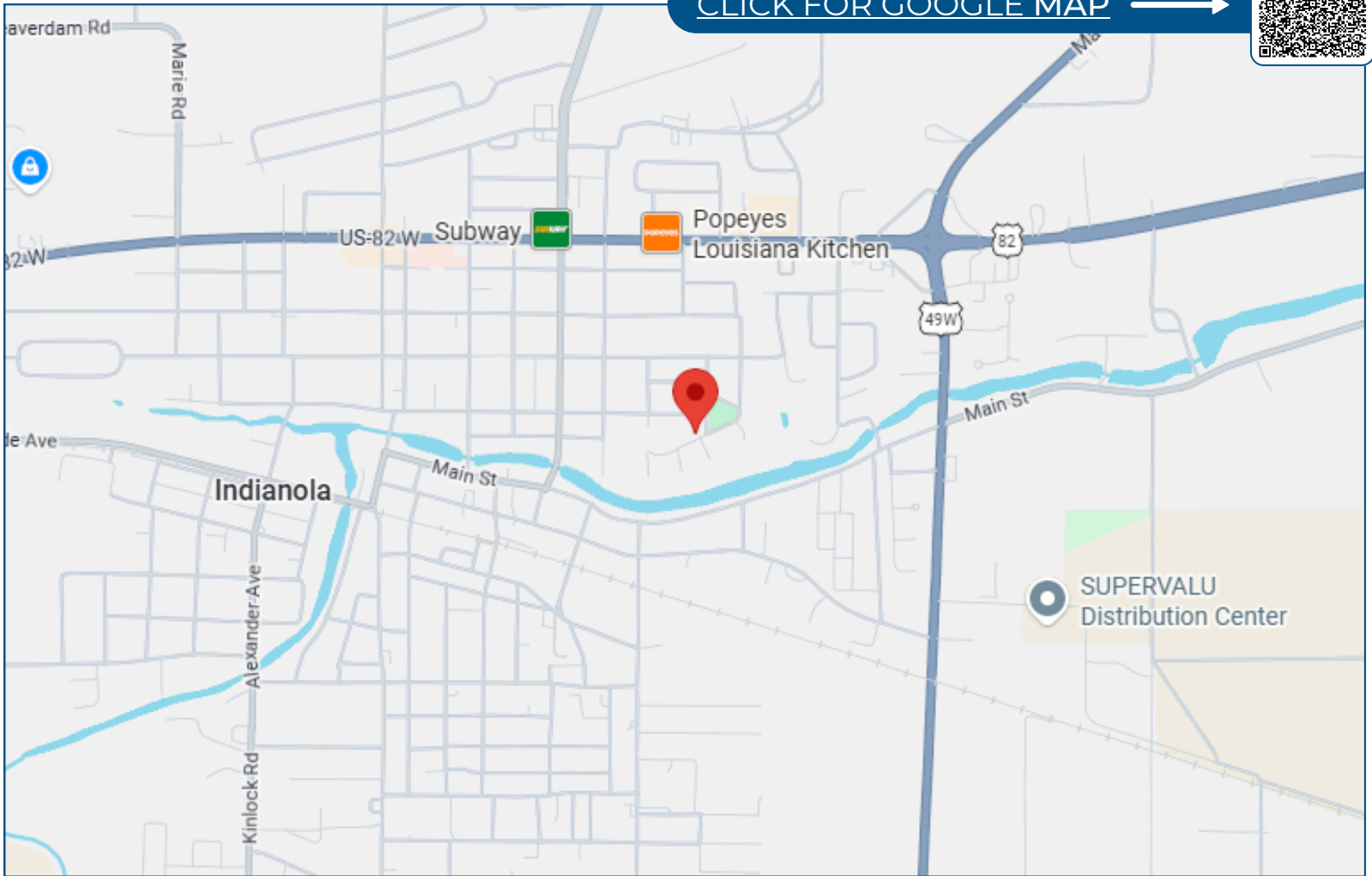
Emerson@TomSmithLand.com



Expect More. Get More.

Directional Map

CLICK FOR GOOGLE MAP 



611 Magnolia Drive Indianola, MS 38751

Directions from the intersection of Hwy 49 and Hwy 82 Indianola, MS: Travel West on Hwy 82 for approximately 0.5 miles and turn left onto State Street. In 440 feet turn left onto Highland Drive and in 0.2 miles turn left onto Willow Dr. Continue 0.2 miles and Willow Drive turns into Magnolia Drive and in 0.1 mile the house will be on the right.

**EMERSON
LOVELACE**
REALTOR®

Office: 662.441.2500

Cell: 601.715.3302

Emerson@TomSmithLand.com



Expect More. Get More.

Listing Agent



EMERSON LOVELACE

Emerson is a fifth generation native of the Mississippi Delta dating back to the late 1800's. With strong family ties in the Indianola Commercial Real Estate Market, Emerson manages and consults both clients and prospective clients on real estate opportunities in and around Sunflower County, MS.

After graduating from the University of Mississippi with a Bachelor of Business Administration degree in 1998, Emerson spent a year enjoying the mountains of Aspen, Colorado which proved to be a much-needed prospective change for his future plans. His first job in real estate would be realized in Denver, Colorado as a real estate mortgage consultant, followed by six years managing a successful financial futures trading group at the Chicago Board of Trade.

Originally receiving his real estate license in 2006 selling homes along the beaches of Highway 30A in Florida, Emerson has since held real estate licenses in both Georgia and Mississippi as well. Shortly after moving back to the Mississippi Delta in 2013 to manage and sell his real estate investments, he decided his love of the area was just too strong to move away. As a consultant with his late father's firm Lovelace Real Estate Investments, Emerson built a successful real estate investment portfolio he proudly manages to this day.

Over the course of his professional career in real estate finance, sales, consulting and management, nothing is more important to Emerson than the fiduciary relationship with his clients. Attention to detail, hard work, dedication, and an open mind are of the utmost importance to him getting the job done right and maintaining long lasting relationships for the future.

OFFICE: 662.441.2500

CELL: 601.715.3302

Emerson@TomSmithLand.com

CALL EMERSON TODAY!



Expect More. Get More.