

# Cabin on 2.76± Acres Oktober County, MS



**\$289,000**

Welcome to 1887 MS Hwy 182. This 1,408 square foot, 3 bed 2 bath cabin sits on 2.76± acres in the Adaton Community. This cabin is situated at the end of a dead-end road with plenty of privacy. It features front and back porches that over-look the property and the entire back yard is completely fenced. There is also a large barn on the property for all your storage needs. The circle driveway allows for easy access all around the house, barn and property. This property is just 7.5 miles from Main Street in Starkville. and within 20 minutes of Mississippi State University! To schedule a private showing, call or text Walker Trantum today!



**WALKER  
TRANUM**  
REALTOR®

Office: 662.268.6333

Cell: 662.769.1442

Walker@TomSmithHomes.com



Expect More. Get More.

**A Real Estate Expert You Can Trust**

TomSmithLandandHomes.com

Information is believed to be accurate but not guaranteed.







**WALKER  
TRANUM**  
REALTOR®

Office: 662.268.6333

Cell: 662.769.1442

Walker@TomSmithHomes.com



Expect More. Get More.

**A Real Estate Expert You Can Trust**

TomSmithLandandHomes.com

Information is believed to be accurate but not guaranteed.







**WALKER  
TRANUM**  
REALTOR®

Office: 662.268.6333

Cell: 662.769.1442

Walker@TomSmithHomes.com



Expect More. Get More.

**A Real Estate Expert You Can Trust**

TomSmithLandandHomes.com

Information is believed to be accurate but not guaranteed.





# Aerial Map



[Interactive Map Link](#)



**WALKER  
TRANUM**  
REALTOR®

Office: 662.268.6333  
Cell: 662.769.1442  
Walker@TomSmithHomes.com



Expect More. Get More.

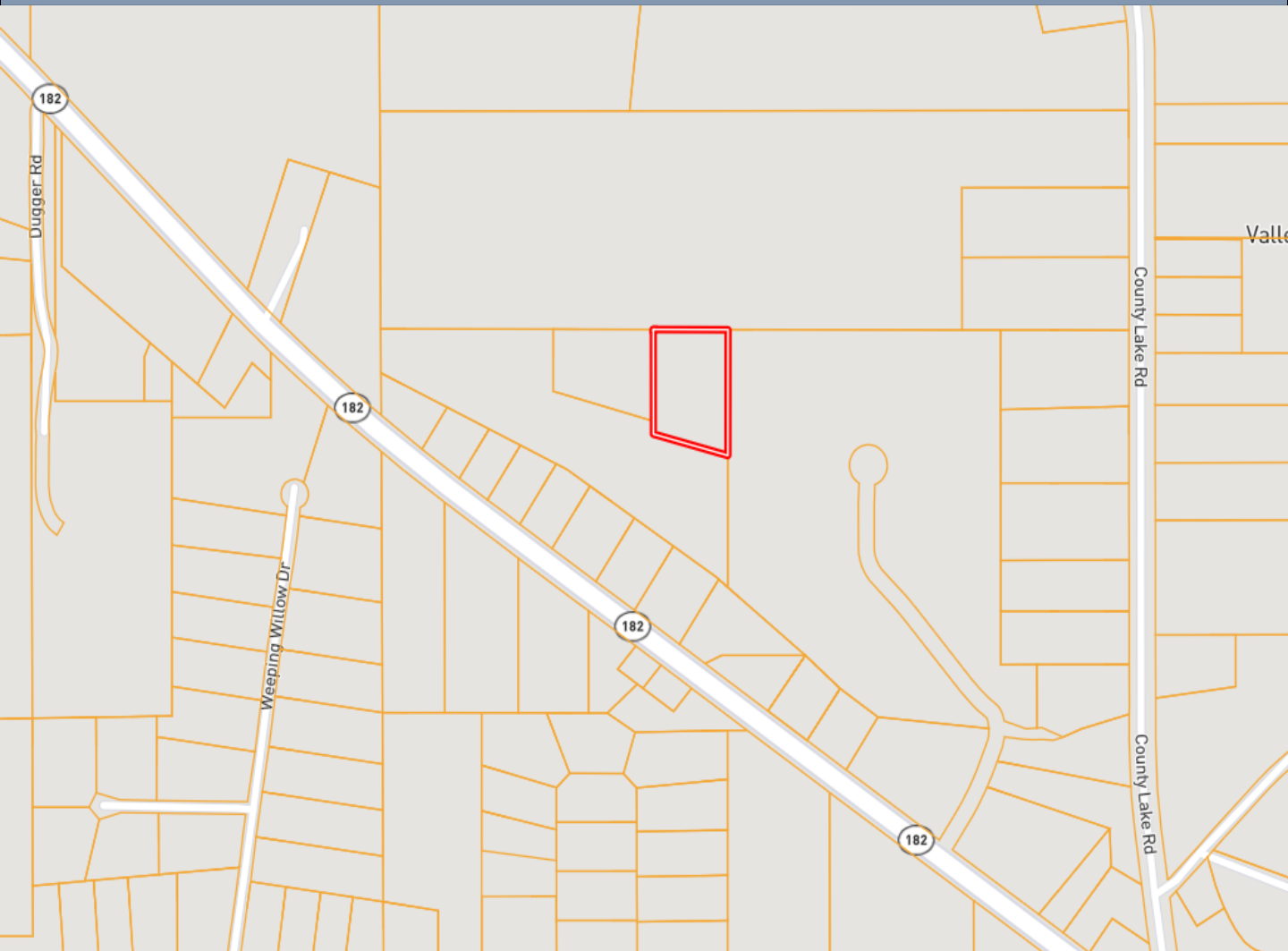
**A Real Estate Expert You Can Trust**

TomSmithLandandHomes.com

Information is believed to be accurate but not guaranteed.



# Ownership Map



**WALKER  
TRANUM**  
REALTOR®

Office: 662.268.6333

Cell: 662.769.1442

Walker@TomSmithHomes.com



Expect More. Get More.

**A Real Estate Expert You Can Trust**

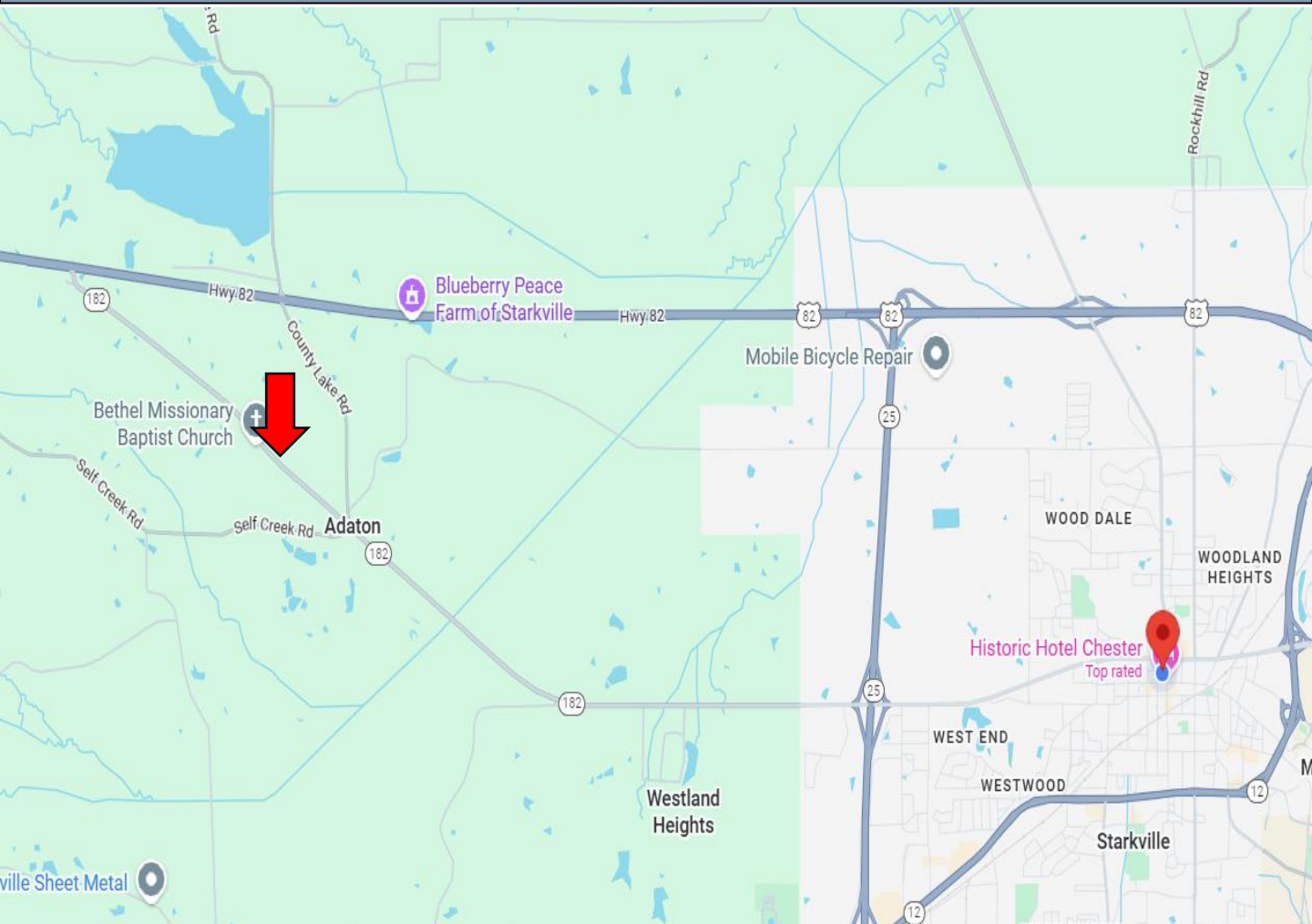
TomSmithLandandHomes.com

Information is believed to be accurate but not guaranteed.





# Directional Map



Directions from Starkville, MS: Turn right onto W Main St for .4 miles. Then turn right onto Ernest H Jones Jr Drive for .1 miles. After that turn left onto MS-182 W for 6.8 miles and the property will be on your left.

[Google Map Link](#)



**WALKER  
TRANUM**  
REALTOR®

Office: 662.268.6333

Cell: 662.769.1442

Walker@TomSmithHomes.com



Expect More. Get More.

**A Real Estate Expert You Can Trust**

TomSmithLandandHomes.com

Information is believed to be accurate but not guaranteed.

