



# SMALLTOWN

HUNTING PROPERTIES  
& REAL ESTATE<sup>SM</sup>

**103 SILVERLEAF DRIVE  
MADISON COUNTY, MS**

**\$899,999**



OFFICE (769) 888-2522 | [WWW.SMALLTOWNPROPERTIES.COM](http://WWW.SMALLTOWNPROPERTIES.COM)

# 103 SILVERLEAF DRIVE

# PROPERTY PROFILE

## LOCATION:

- 103 Silverleaf Drive  
Madison, MS 39110
- Silverleaf Subdivision
- Madison County

## COORDINATES:

- 32.53695, -90.1659

## TAX INFORMATION:

- TBD

## PROPERTY USE:

- Residential

## PROPERTY INFORMATION:

- 1± Acre Lot
- New Construction
- 3,745± SqFt Heated/Cooled
- 4 Bedrooms/4.5 Bathrooms
- Climate-Controlled 3-Car Garage
- Engineered Oak Hardwood Floors
- Vaulted Living and Kitchen Area
- Indoor and outdoor Ventless Fireplaces
- Covered Back Porch
- Built-In Outdoor Grill  
and Cooking Area
- 24kW Whole-House Generator



**SMALLTOWN**  
HUNTING PROPERTIES  
& REAL ESTATE<sup>SM</sup>

**CODY BELLIPANNI**

LAND SPECIALIST

C: 601-559-1758

O: 769-888-2522

[cbellipanni@smalltownproperties.com](mailto:cbellipanni@smalltownproperties.com)

4848 Main St. - Flora, MS 39071

[smalltownproperties.com](http://smalltownproperties.com)

Information is believed to be accurate but not guaranteed.

# WELCOME TO 103 SILVERLEAF DRIVE

**WELCOME TO A STRONG, WELL-BUILT HOME IN A FANTASTIC LOCATION: 103 SILVERLEAF DRIVE IN MADISON, MISSISSIPPI.** This new-construction home sits on a beautiful 1± acre lot in Silverleaf Subdivision, just minutes from the small town of Livingston. The home offers 3,745± square feet of well-designed space with four bedrooms, four full baths, and one half bath across two levels.

The main living area features a tall vaulted ceiling, engineered oak hardwood floors, an indoor ventless fireplace, and an open layout that flows between the living room, kitchen, and dining area. The kitchen includes an oversized island, walk-in pantry, and clean custom finishes. A mudroom is located off the garage entry.

The primary suite has a spacious walk-in closet and a modern bath with a soaking tub and separate shower. A private bedroom and bath are on the second level.



**SMALLTOWN**  
HUNTING PROPERTIES  
& REAL ESTATE<sup>SM</sup>

**CODY BELLIPANNI**

LAND SPECIALIST

C: 601-559-1758

O: 769-888-2522

[cbellipanni@smalltownproperties.com](mailto:cbellipanni@smalltownproperties.com)

4848 Main St. - Flora, MS 39071

[smalltownproperties.com](http://smalltownproperties.com)

Information is believed to be accurate but not guaranteed.

# MORE ABOUT 103 SILVERLEAF DRIVE

The covered back porch overlooks a large backyard with views of a beautiful hardwood tree bottom, offering privacy and room to expand outdoor living. The home includes a fully climate-controlled 3-car garage, a 24 kW whole-house generator, and a full irrigation system for the yard and landscaping.

The home is located in the highly sought-after Madison County School District, zoned for Mansdale Elementary, Germantown Middle, and Germantown High School. The location is hard to beat, being just minutes from local restaurants and shops and only a short drive to the growing areas of Gluckstadt and Madison, in addition to shopping and dining at Renaissance at Colony Park. The home is also located directly across from Lake Caroline Golf Club, making it easy to join and enjoy golf close to home.

**To schedule a private tour, contact Cody Bellipanni today and experience #TheSmallTownWay!**



**SMALLTOWN**  
HUNTING PROPERTIES  
& REAL ESTATE<sup>SM</sup>

**CODY BELLIPANNI**

LAND SPECIALIST

C: 601-559-1758

O: 769-888-2522

[cbellipanni@smalltownproperties.com](mailto:cbellipanni@smalltownproperties.com)

4848 Main St. - Flora, MS 39071

[smalltownproperties.com](http://smalltownproperties.com)

Information is believed to be accurate but not guaranteed.



# SMALLTOWN

HUNTING PROPERTIES  
& REAL ESTATE<sup>SM</sup>

**CODY BELLIPANNI**

LAND SPECIALIST

C: 601-559-1758

O: 769-888-2522

[cbellipanni@smalltownproperties.com](mailto:cbellipanni@smalltownproperties.com)

4848 Main St. - Flora, MS 39071

[smalltownproperties.com](http://smalltownproperties.com)



# SMALLTOWN

HUNTING PROPERTIES  
& REAL ESTATE<sup>SM</sup>

**CODY BELLIPANNI**

LAND SPECIALIST

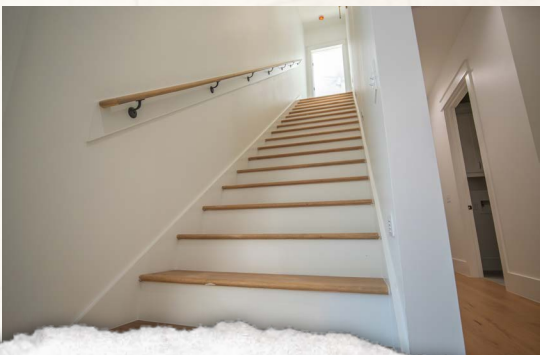
C: 601-559-1758

O: 769-888-2522

[cbellipanni@smalltownproperties.com](mailto:cbellipanni@smalltownproperties.com)

4848 Main St. - Flora, MS 39071

[smalltownproperties.com](http://smalltownproperties.com)



# SMALLTOWN

HUNTING PROPERTIES  
& REAL ESTATE<sup>SM</sup>

**CODY BELLIPANNI**

LAND SPECIALIST

C: 601-559-1758

O: 769-888-2522

[cbellipanni@smalltownproperties.com](mailto:cbellipanni@smalltownproperties.com)

4848 Main St. - Flora, MS 39071

[smalltownproperties.com](http://smalltownproperties.com)



# SMALLTOWN

HUNTING PROPERTIES  
& REAL ESTATE<sup>SM</sup>

**CODY BELLIPANNI**

LAND SPECIALIST

C: 601-559-1758

O: 769-888-2522

[cbellipanni@smalltownproperties.com](mailto:cbellipanni@smalltownproperties.com)

4848 Main St. - Flora, MS 39071

[smalltownproperties.com](http://smalltownproperties.com)



# SMALLTOWN

HUNTING PROPERTIES  
& REAL ESTATE<sup>SM</sup>

**CODY BELLIPANNI**

LAND SPECIALIST

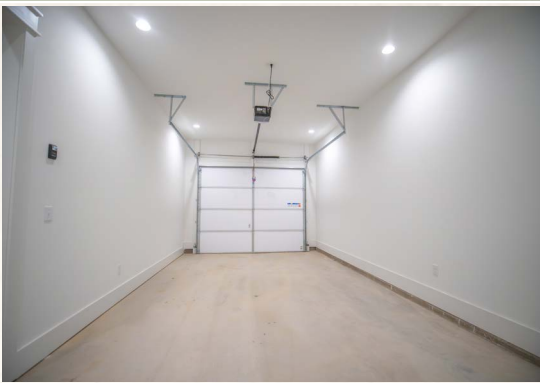
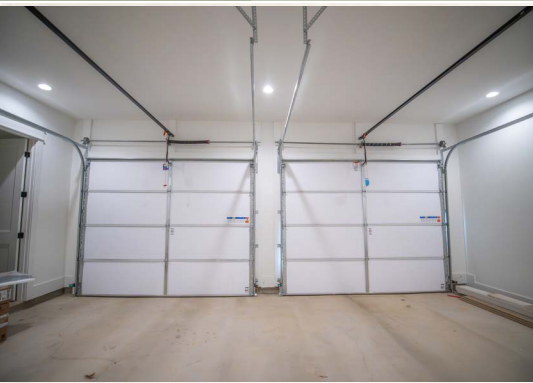
C: 601-559-1758

O: 769-888-2522

[cbellipanni@smalltownproperties.com](mailto:cbellipanni@smalltownproperties.com)

4848 Main St. - Flora, MS 39071

[smalltownproperties.com](http://smalltownproperties.com)



# SMALLTOWN

HUNTING PROPERTIES  
& REAL ESTATE<sup>SM</sup>

**CODY BELLIPANNI**

LAND SPECIALIST

C: 601-559-1758

O: 769-888-2522

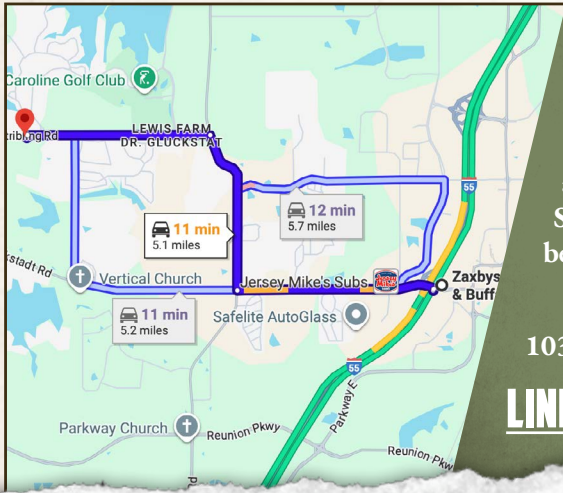
[cbellipanni@smalltownproperties.com](mailto:cbellipanni@smalltownproperties.com)

4848 Main St. - Flora, MS 39071

[smalltownproperties.com](http://smalltownproperties.com)



land id. LINK



Directions From the Gluckstadt Exit off I-55: Travel 1.7 miles west on Gluckstadt Road. Turn right on Catlett Road and continue 1.5 miles. Turn left on Stribling Road and proceed 1.7 miles. Turn left on Silverleaf Drive and the property will be the first house on the right.

Physical Address:  
 103 Silverleaf Drive | Madison, MS 39110

**LINK TO GOOGLE MAP DIRECTIONS**



**SMALLTOWN**  
 HUNTING PROPERTIES  
 & REAL ESTATE<sup>SM</sup>

**CODY BELLIPANNI**

LAND SPECIALIST

C: 601-559-1758

O: 769-888-2522

cbellipanni@smalltownproperties.com

4848 Main St. - Flora, MS 39071

smalltownproperties.com