

53.7± ACRES

Recreation / Investment

Forrest County, MS



\$191,000



Expect More. Get More.

TomSmithLandandHomes.com

Office: 601.898.2772

Property Information

Location:

- 3 miles South of Hwy 49 & Hwy 98 intersection

Property Use:

- Investment, Hunting, and Residential

Coordinates:

- 31.2104, -89.2528

Property Highlights

- 53.7± Acres
- 0.5± miles from Hwy 49 for quick access
- 430± feet of paved road frontage
- Utilities Available



BRADY RICHARDSON
REALTOR®

O: 601.898.2772 | C: 662.418.8791
Brady@TomSmithLand.com



JAKE CALLENDER
REALTOR®

O: 601.898.2772 | C: 601.955.2559
Jake@TomSmithLand.com

TomSmithLandandHomes.com

Information is believed to be accurate but not guaranteed.

The Property

53.7± Acres

This 53.7-acre tract in Forrest County, MS offers the perfect blend of recreation and investment potential. The property features a beautiful mix of timber, providing both natural beauty and long-term value. With its diverse landscape, this tract offers multiple opportunities—whether you're looking for a peaceful homesite, a weekend hunting property, or a solid land investment.

Convenient access to Highway 49 makes this property easy to reach while still offering the quiet seclusion of the outdoors. The mix of timber and natural habitat creates excellent conditions for wildlife, making it ideal for deer and small game hunting or simply enjoying the outdoors.

Whether your goal is recreation, a homesite, or investment, this 53.7-acre property in Forrest County is one you don't want to miss. Call Jake Callender or Brady Richardson with Tom Smith Land and Homes to schedule your private showing today!



BRADY RICHARDSON
REALTOR®

O: 601.898.2772 | C: 662.418.8791
Brady@TomSmithLand.com



JAKE CALLENDER
REALTOR®

O: 601.898.2772 | C: 601.955.2559
Jake@TomSmithLand.com

TomSmithLandandHomes.com

Information is believed to be accurate but not guaranteed.

TomSmithLandandHomes.com

Information is believed to be accurate but not guaranteed.



Aerial Photos



BRADY RICHARDSON
REALTOR®

O: 601.898.2772 | C: 662.418.8791
Brady@TomSmithLand.com



JAKE CALLENDER
REALTOR®

O: 601.898.2772 | C: 601.955.2559
Jake@TomSmithLand.com

TomSmithLandandHomes.com

Information is believed to be accurate but not guaranteed.



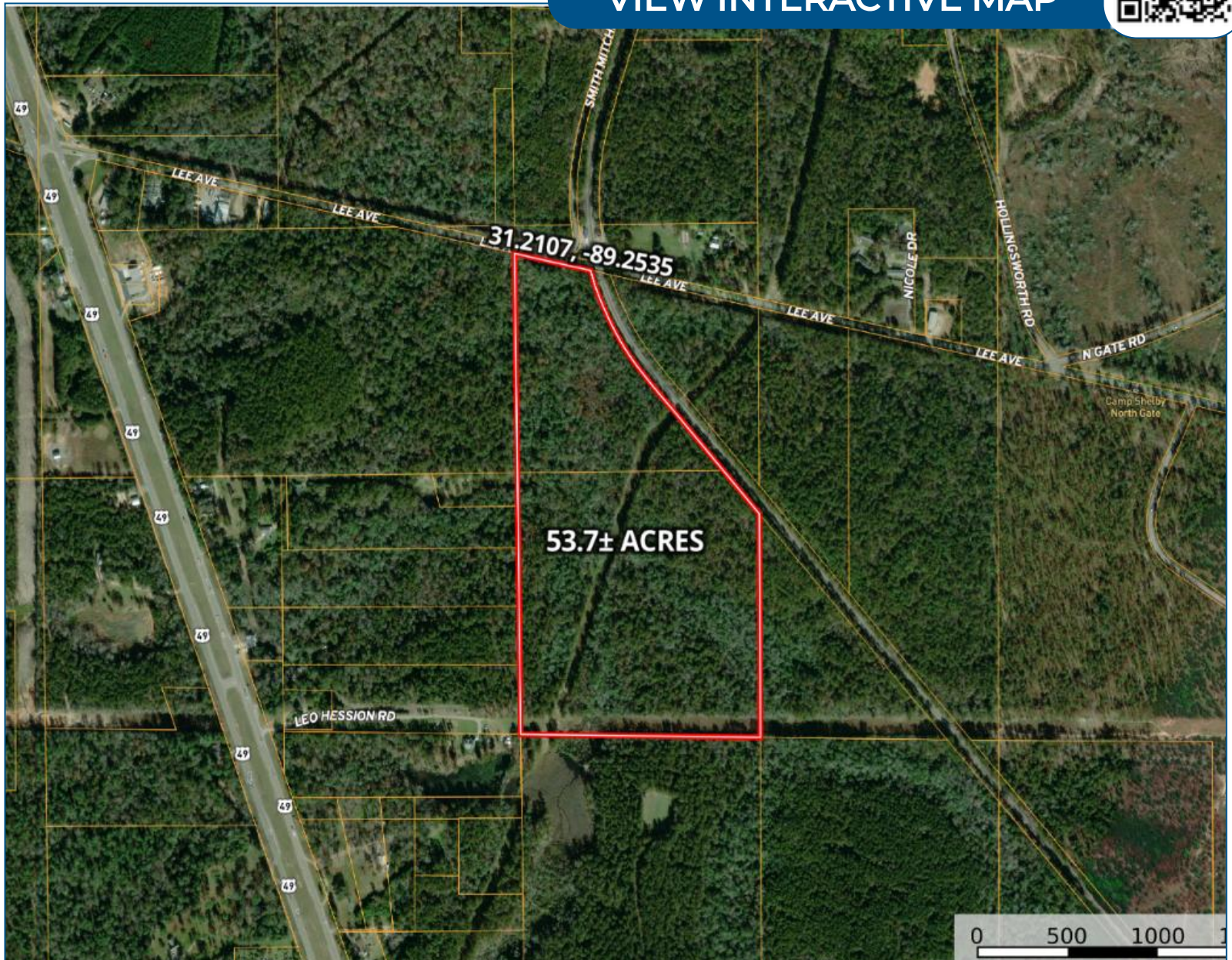
TomSmithLandandHomes.co

Information is believed to be accurate but not guaranteed.

Aerial Map



VIEW INTERACTIVE MAP



BRADY RICHARDSON
REALTOR®

O: 601.898.2772 | C: 662.418.8791
Brady@TomSmithLand.com



JAKE CALLENDER
REALTOR®

O: 601.898.2772 | C: 601.955.2559
Jake@TomSmithLand.com

TomSmithLandandHomes.com

Information is believed to be accurate but not guaranteed.



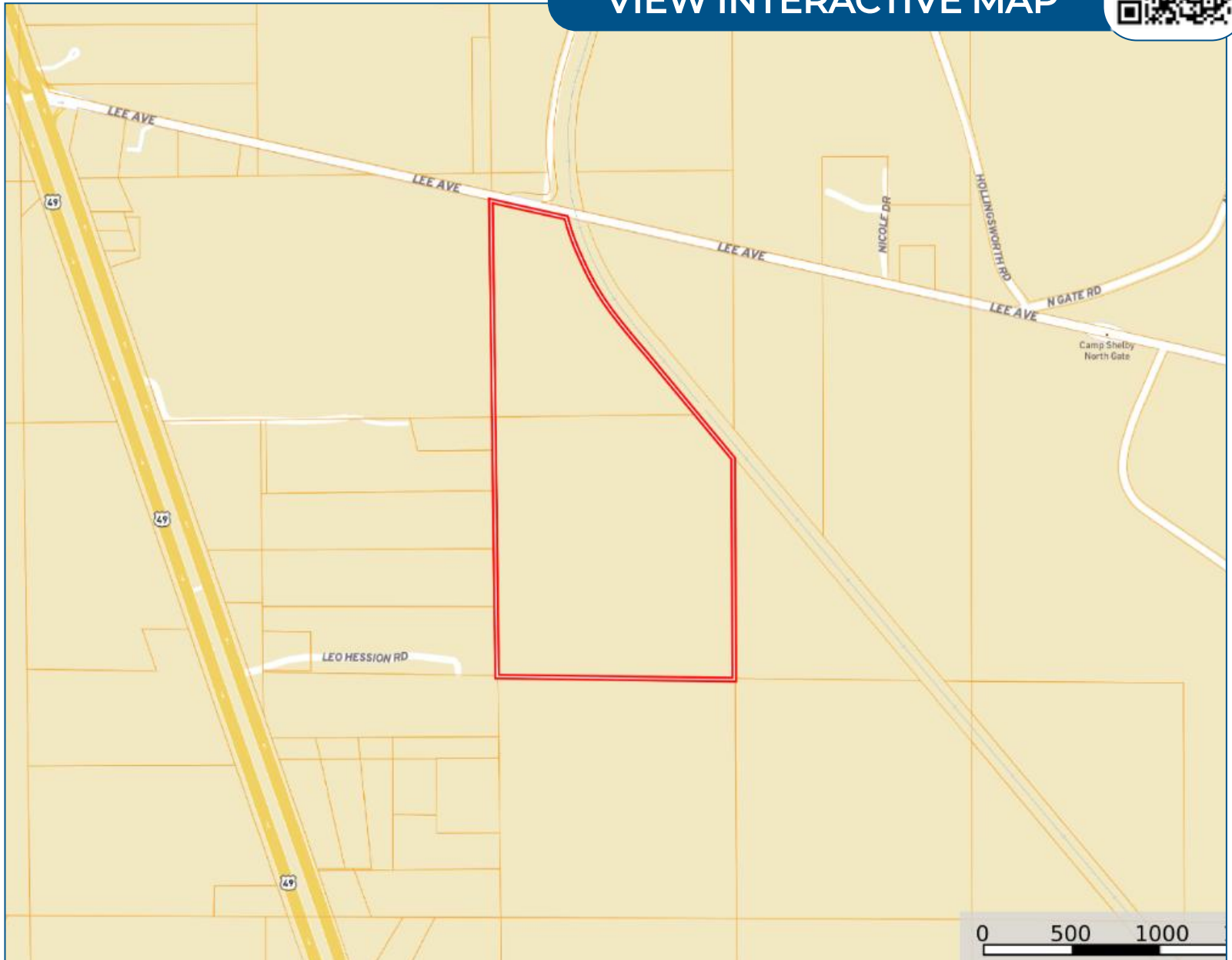
TomSmithLandandHomes.co

Information is believed to be accurate but not guaranteed.

Ownership Map



[VIEW INTERACTIVE MAP](#)



BRADY RICHARDSON
REALTOR®

O: 601.898.2772 | C: 662.418.8791
Brady@TomSmithLand.com



JAKE CALLENDER
REALTOR®

O: 601.898.2772 | C: 601.955.2559
Jake@TomSmithLand.com

TomSmithLandandHomes.com

Information is believed to be accurate but not guaranteed.

TomSmithLandandHomes.co

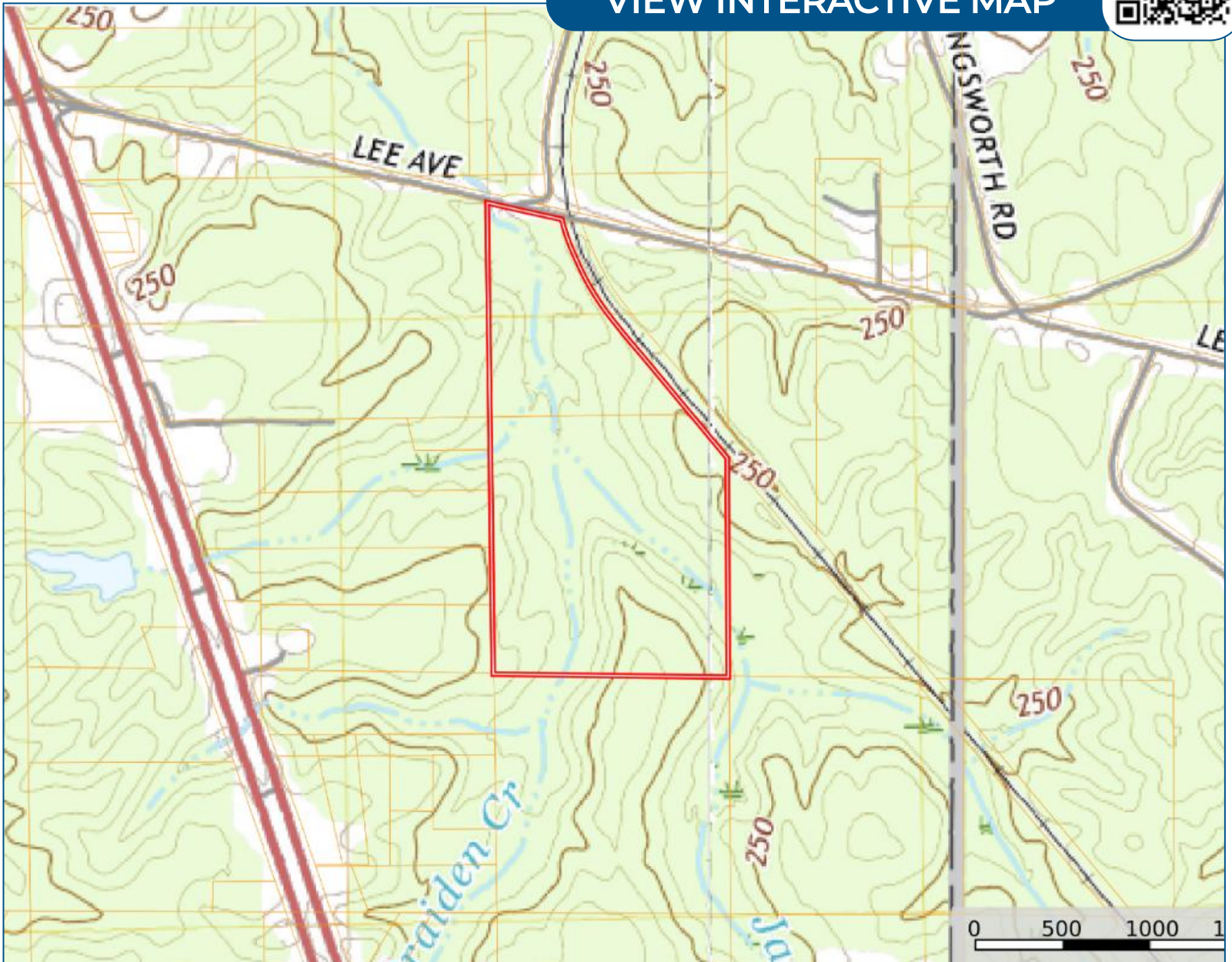
Information is believed to be accurate but not guaranteed.



Topo Map



VIEW INTERACTIVE MAP



BRADY RICHARDSON
REALTOR®

O: 601.898.2772 | C: 662.418.8791
Brady@TomSmithLand.com



JAKE CALLENDER
REALTOR®

O: 601.898.2772 | C: 601.955.2559
Jake@TomSmithLand.com

TomSmithLandandHomes.com

Information is believed to be accurate but not guaranteed.

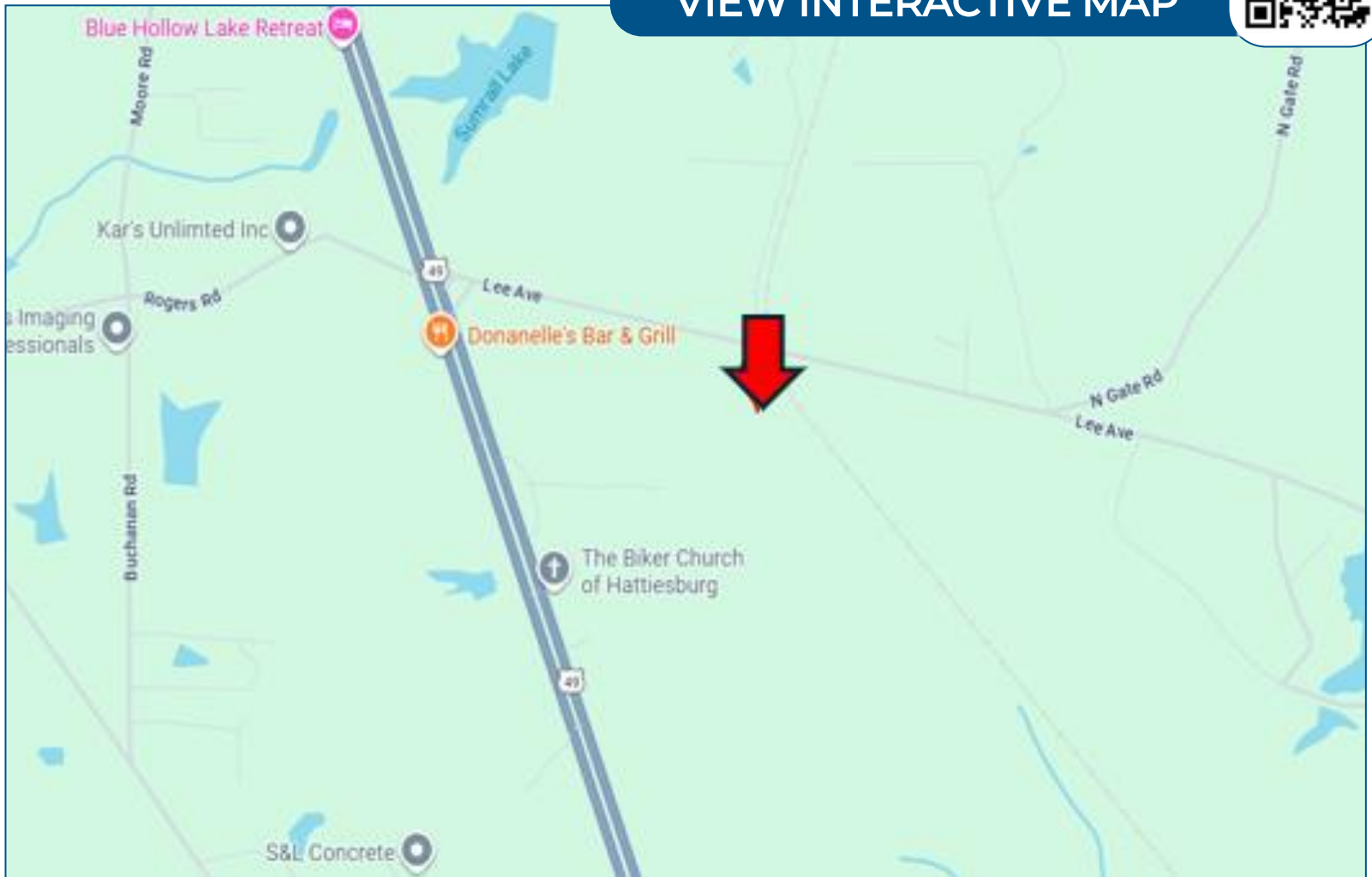
TomSmithLandandHomes.co

Information is believed to be accurate but not guaranteed.



Directional Map

VIEW INTERACTIVE MAP



DIRECTONS FROM THE INTERSECTION OF HWY 49 AND HWY 98: Head south on Hwy 49 S for 2.2 miles. Turn left onto Lee Ave and go straight for 0.6 miles and the property will be on your right. [Google Map Link](#)

BRADY RICHARDSON
REALTOR®

O: 601.898.2772 | C: 662.418.8791
Brady@TomSmithLand.com



JAKE CALLENDER
REALTOR®

O: 601.898.2772 | C: 601.955.2559
Jake@TomSmithLand.com

TomSmithLandandHomes.com

Information is believed to be accurate but not guaranteed.

TomSmithLandandHomes.co

Information is believed to be accurate but not guaranteed.

