

# Dream Homesite

2.5± Acres

Florence/Simpson County/MS



**\$29,875**



Expect More. Get More.

# Property Information

## Location:

- Bones Road in Florence, MS

## Property Use:

- Homesite Opportunity

## Coordinates:

- 32.047683, -90.114768

# Property Highlights

- 2.5± Acres
- Lakefront
- Homesite



**JOSH WREN** REALTOR®  
O: 601.898.2772 | C: 601.497.9440  
Josh@TomSmithLand.com



**CHAD WILSON** REALTOR®  
O: 601.898.2772 | C: 601.750.1970  
Chad@TomSmithLand.com

**Expect More. Get More.**

*The Real Estate Experts You Can Trust!*



**TomSmithLandandHomes.com**

Information is believed to be accurate but not guaranteed.

# The Property

# 2.5± Acres

Are you looking for the perfect spot to build your dream home or cabin? This 2.5± acre lakefront property in Simpson County offers stunning views and partial lake ownership. Conveniently located just 9 miles from Florence and 30 minutes from Mendenhall, this tranquil setting is ideal for creating your private retreat. Don't miss this unique opportunity! Call Chad or Josh today to schedule your tour!



**JOSH WREN**  
REALTOR®

O: 601.898.2772 | C: 601.497.9440  
Josh@TomSmithLand.com

**CHAD WILSON**  
REALTOR®

O: 601.898.2772 | C: 601.750.1970  
Chad@TomSmithLand.com

**Expect More. Get More.**

*The Real Estate Experts You Can Trust!*



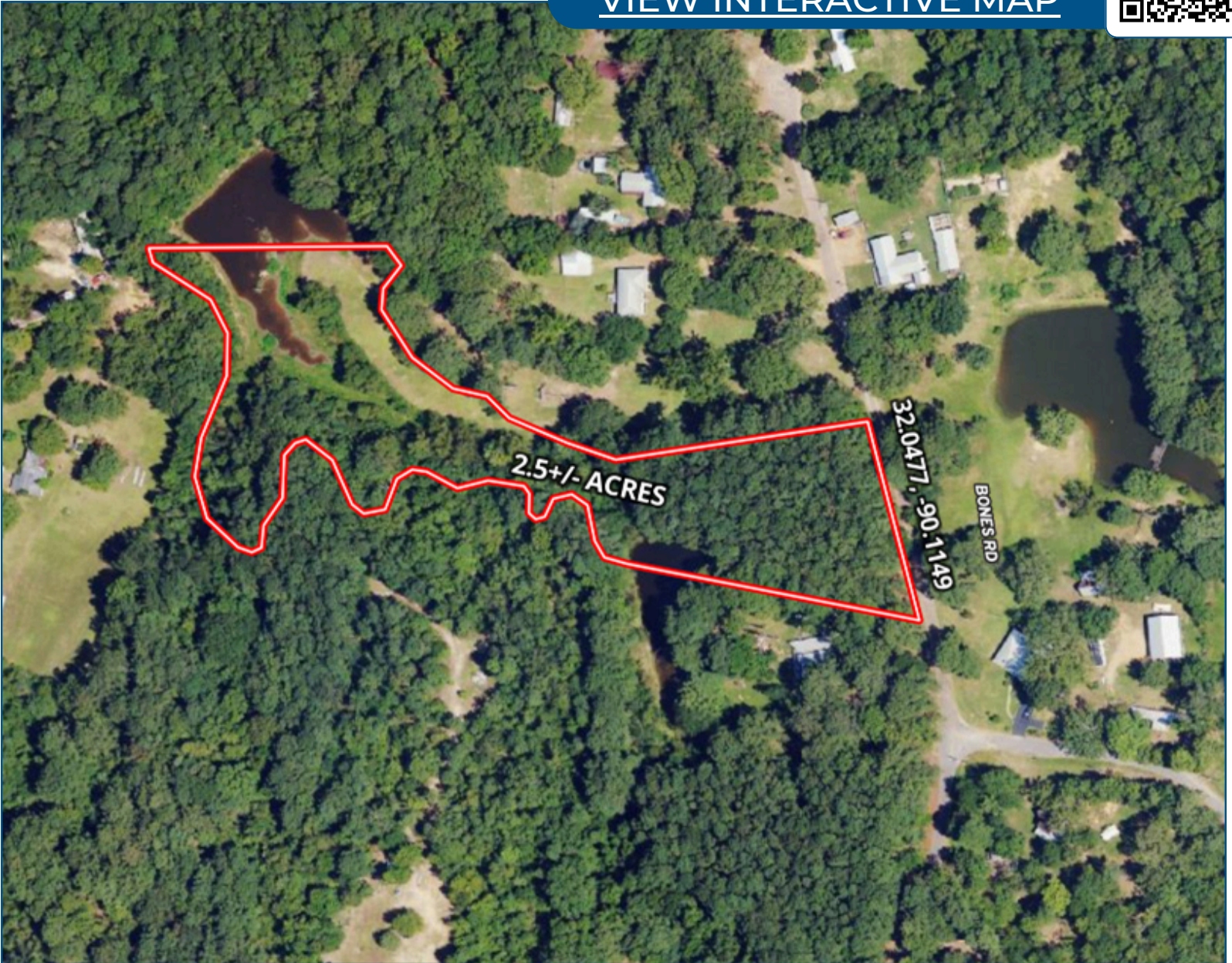
[TomSmithLandandHomes.com](http://TomSmithLandandHomes.com)

Information is believed to be accurate but not guaranteed.

# Aerial Map



[VIEW INTERACTIVE MAP](#)



**JOSH WREN**  
REALTOR®

O: 601.898.2772 | C: 601.497.9440  
Josh@TomSmithLand.com

**CHAD WILSON**  
REALTOR®

O: 601.898.2772 | C: 601.750.1970  
Chad@TomSmithLand.com

**Expect More. Get More.**

*The Real Estate Experts You Can Trust!*

[TomSmithLandandHomes.com](http://TomSmithLandandHomes.com)

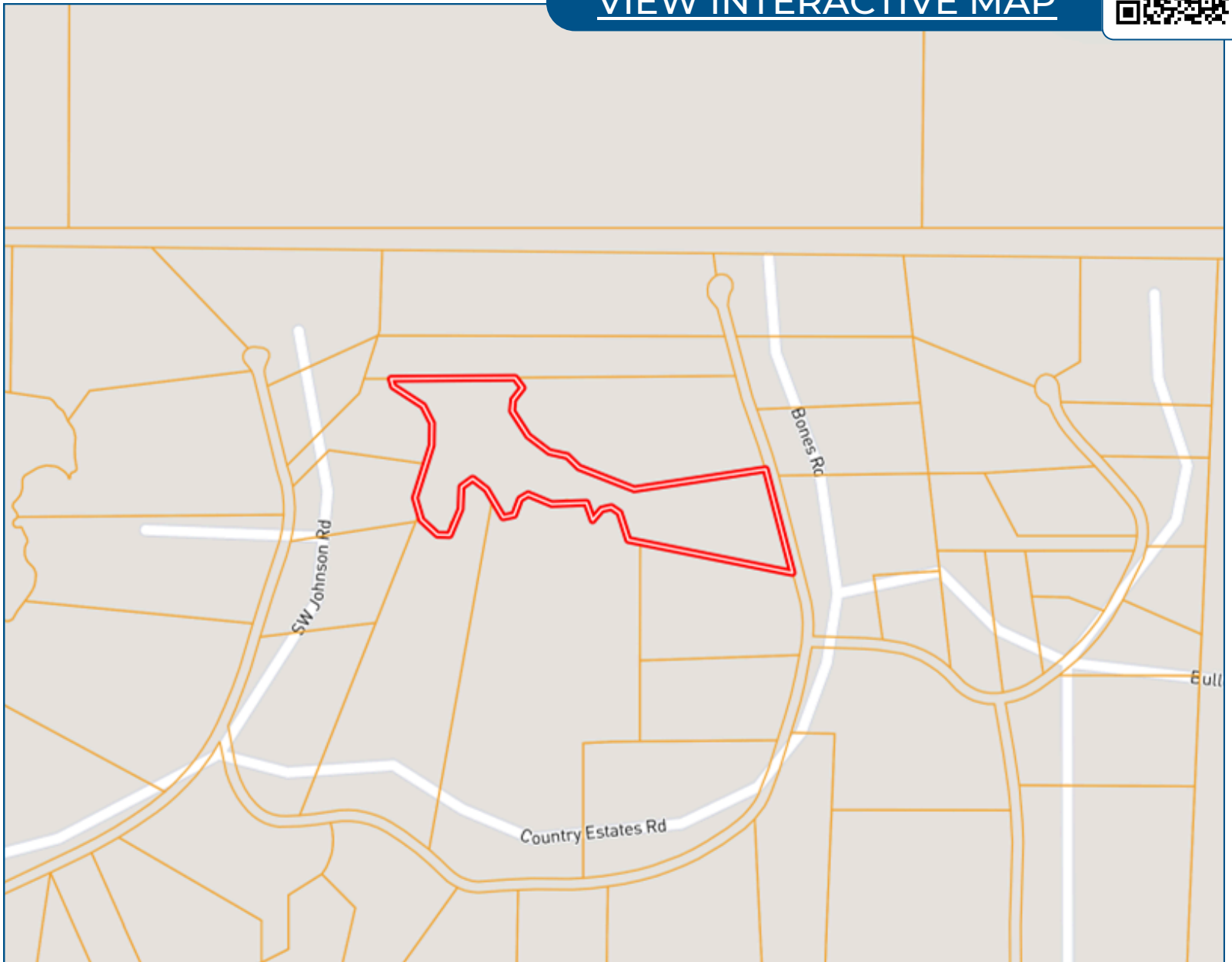
Information is believed to be accurate but not guaranteed.



# Ownership Map



[VIEW INTERACTIVE MAP](#)



**JOSH WREN**  
REALTOR®  
O: 601.898.2772 | C: 601.497.9440  
Josh@TomSmithLand.com



**CHAD WILSON**  
REALTOR®  
O: 601.898.2772 | C: 601.750.1970  
Chad@TomSmithLand.com

**Expect More. Get More.**

*The Real Estate Experts You Can Trust!*



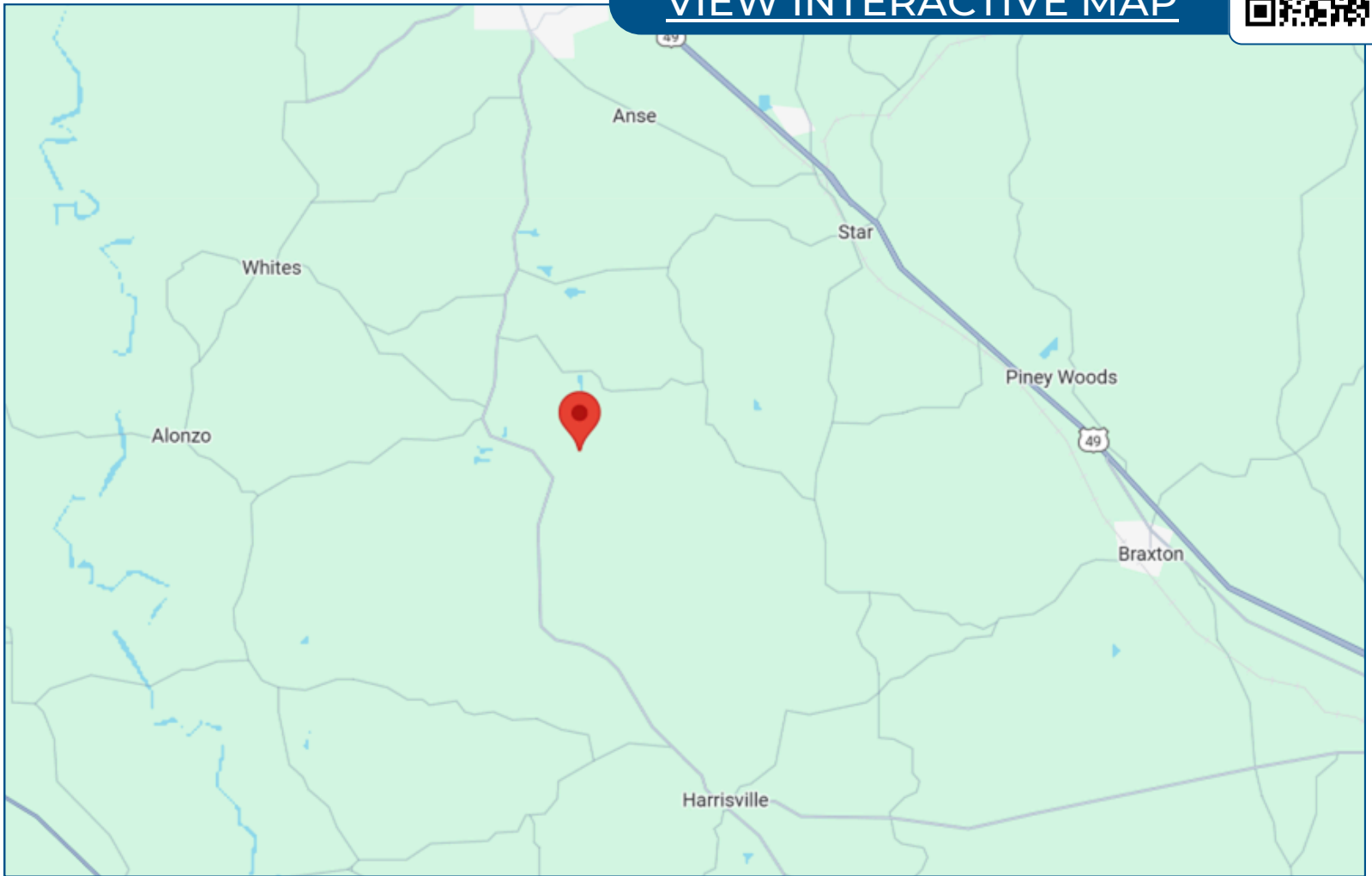
[TomSmithLandandHomes.com](http://TomSmithLandandHomes.com)

Information is believed to be accurate but not guaranteed.

# Directional Map



[VIEW INTERACTIVE MAP](#)



Directions from Hwy 49 and Hwy 469 in Florence, MS: Turn on Hwy 469 and travel 0.5 miles. Turn left onto Hwy 469 and travel 8.3 miles. Turn left onto Country Estates Rd. and travel 0.4 miles. Turn right to stay on Country Estates Rd. and travel 0.4 miles. Continue onto Bones Rd. After 210 feet, the property will be on the left.



**JOSH WREN**  
REALTOR®

O: 601.898.2772 | C: 601.497.9440  
Josh@TomSmithLand.com

**CHAD WILSON**  
REALTOR®

O: 601.898.2772 | C: 601.750.1970  
Chad@TomSmithLand.com

**Expect More. Get More.**

*The Real Estate Experts You Can Trust!*



[TomSmithLandandHomes.com](http://TomSmithLandandHomes.com)

Information is believed to be accurate but not guaranteed.