

BANK BUILDING ISOLA, MS



Commercial Opportunity - Former Bank Building on 2± Acres Located at 100 Julia Street, Belzoni, MS 39038, this former bank property presents a rare and affordable commercial opportunity in the heart of Isola. Situated on approximately 2 acres, the property offers excellent visibility, ample space, and strong potential for a wide range of business uses. The existing building features a spacious lobby, multiple private offices and rooms, a break room, two secure safes, and a functional drive-through, making it ideal for continued financial use or easy conversion to other commercial purposes. With its solid layout and infrastructure, the building can be well-suited for an office headquarters, medical or doctor's office, professional services, retail space, or specialty business. Plenty of land provides room for parking, expansion, or redevelopment, adding long-term value and flexibility. Opportunities like this are hard to find—this property is truly a steal at the price for investors, business owners, or entrepreneurs looking to establish or expand in the Delta.



DAVID BELDEN

ASSOCIATE BROKER, ALC®
O: 601.898.2772 | C: 601.415.3884
DBelden@TomSmithLand.com



BRUCE WEST

MANAGING BROKER, ALC®
O: 662.441.2500 | C: 662.873.3007
Bruce@TomSmithLand.com

Expect More. Get More.

The Real Estate Experts You Can Trust!





DAVID BELDEN
ASSOCIATE BROKER, ALC®
O: 601.898.2772 | C: 601.415.3884
DBelden@TomSmithLand.com



BRUCE WEST
MANAGING BROKER, ALC®
O: 662.441.2500 | C: 662.873.3007
Bruce@TomSmithLand.com

Expect More. Get More.

The Real Estate Experts You Can Trust!





DAVID BELDEN
 ASSOCIATE BROKER, ALC®
 O: 601.898.2772 | C: 601.415.3884
 DBelden@TomSmithLand.com



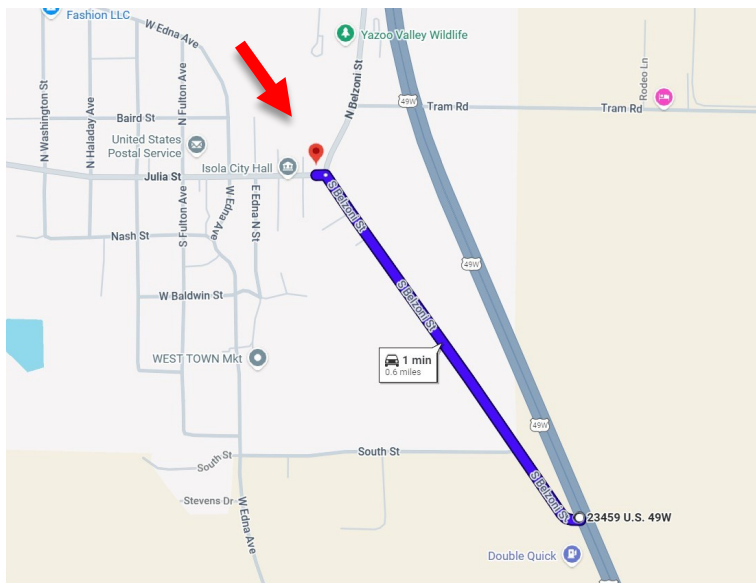
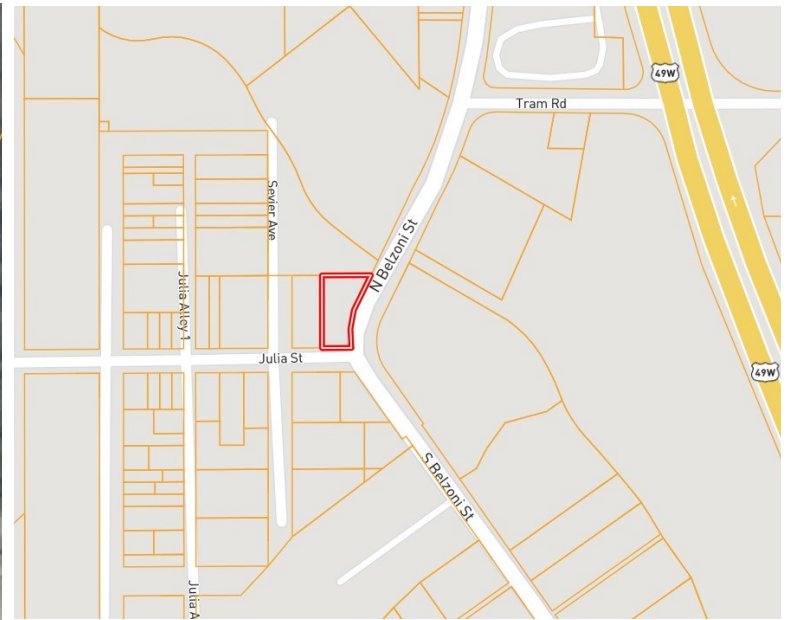
BRUCE WEST
 MANAGING BROKER, ALC®
 O: 662.441.2500 | C: 662.873.3007
 Bruce@TomSmithLand.com

Expect More. Get More.

The Real Estate Experts You Can Trust!



MAPS



Directions from HWY 49W and S Belzoni St:

Head west on S. Belzoni St for .6miles. Turn left on to Julia St and the destination is on your left.

Address:

100 Julia St., Isola MS 39426

[CLICK HERE FOR MAP LINK](#)

[CLICK HERE FOR THE LANDID INTERACTIVE MAP](#)

DAVID BELDEN

ASSOCIATE BROKER, ALC®

O: 601.898.2772 | C: 601.415.3884

DBelden@TomSmithLand.com



BRUCE WEST

MANAGING BROKER, ALC®

O: 662.441.2500 | C: 662.873.3007

Bruce@TomSmithLand.com

Expect More. Get More.

The Real Estate Experts You Can Trust!

