

# BANK BUILDING - ISOLA, MS

## *HUMPHREYS COUNTY*



Commercial Opportunity - Former Bank Building on 2± Acres in the Heart of Isola Located at 100 Julia Street, Belzoni, MS 39038, this former bank property presents a rare and affordable commercial opportunity in the heart of Isola. Situated on approximately 2 acres, the property offers excellent visibility, ample space, and strong potential for a wide range of business uses. The existing building features a spacious lobby, multiple private offices and rooms, a break room, two secure safes, and a functional drive-through, making it ideal for continued financial use or easy conversion to other commercial purposes. With its solid layout and infrastructure, the building can be well-suited for an office headquarters, medical or doctor's office, professional services, retail space, or specialty business. Plenty of land provides room for parking, expansion, or redevelopment, adding long-term value and flexibility. Opportunities like this are hard to find—this property is truly a steal at the price for investors, business owners, or entrepreneurs looking to establish or expand in the Delta.



**DAVID BELDEN**  
ASSOCIATE BROKER, ALC®

O: 601.898.2772 | C: 601.415.3884  
DBelden@TomSmithLand.com



**BRUCE WEST**  
ASSOCIATE BROKER, ALC®

O: 662.771.1101 | C: 662.873.3007  
Bruce@TomSmithLand.com

**TomSmithLandandHomes.com**

Information is believed to be accurate but not guaranteed.





**DAVID BELDEN**

ASSOCIATE BROKER, ALC®

O: 601.898.2772 | C: 601.415.3884

DBelden@TomSmithLand.com

**BRUCE WEST**

ASSOCIATE BROKER, ALC®

O: 662.771.1101 | C: 662.873.3007

Bruce@TomSmithLand.com

**TomSmithLandandHomes.com**

Information is believed to be accurate but not guaranteed.





**DAVID BELDEN**

ASSOCIATE BROKER, ALC®

O: 601.898.2772 | C: 601.415.3884

DBelden@TomSmithLand.com

**BRUCE WEST**

ASSOCIATE BROKER, ALC®

O: 662.771.1101 | C: 662.873.3007

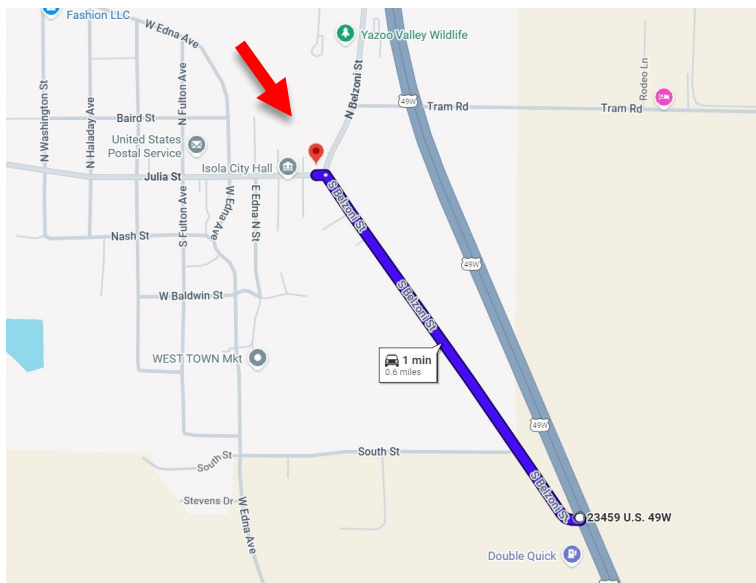
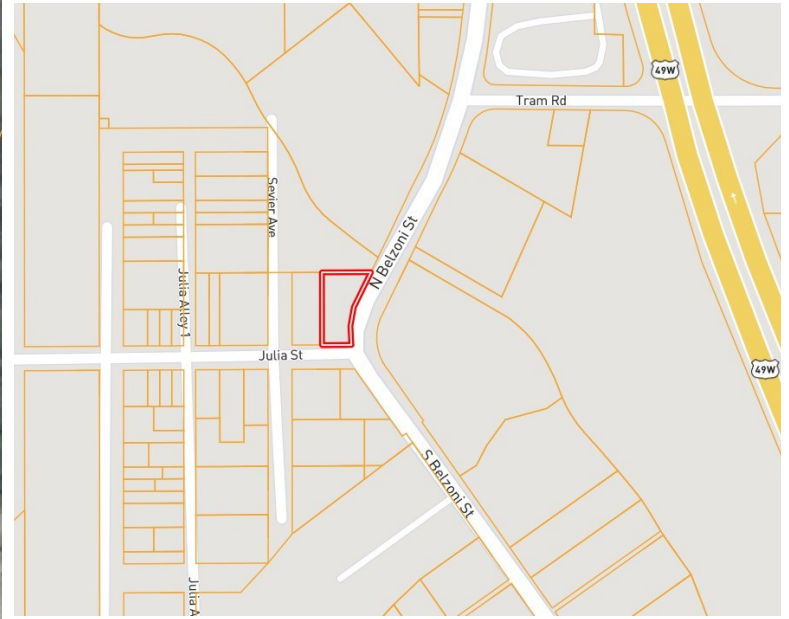
Bruce@TomSmithLand.com

**TomSmithLandandHomes.com**

Information is believed to be accurate but not guaranteed.



# MAPS



## Directions from HWY 49W and S Belzoni St:

Head west on S. Belzoni St for .6miles. Turn left on to Julia St and the destination is on your left.

## Address:

100 Julia St., Isola MS 39426

[CLICK HERE FOR MAP LINK](#)

**[CLICK HERE FOR THE LANDID INTERACTIVE MAP](#)**



**DAVID BELDEN**

ASSOCIATE BROKER, ALC®

O: 601.898.2772 | C: 601.415.3884

DBelden@TomSmithLand.com

**BRUCE WEST**

ASSOCIATE BROKER, ALC®

O: 662.771.1101 | C: 662.873.3007

Bruce@TomSmithLand.com

**TomSmithLandandHomes.com**

Information is believed to be accurate but not guaranteed.

