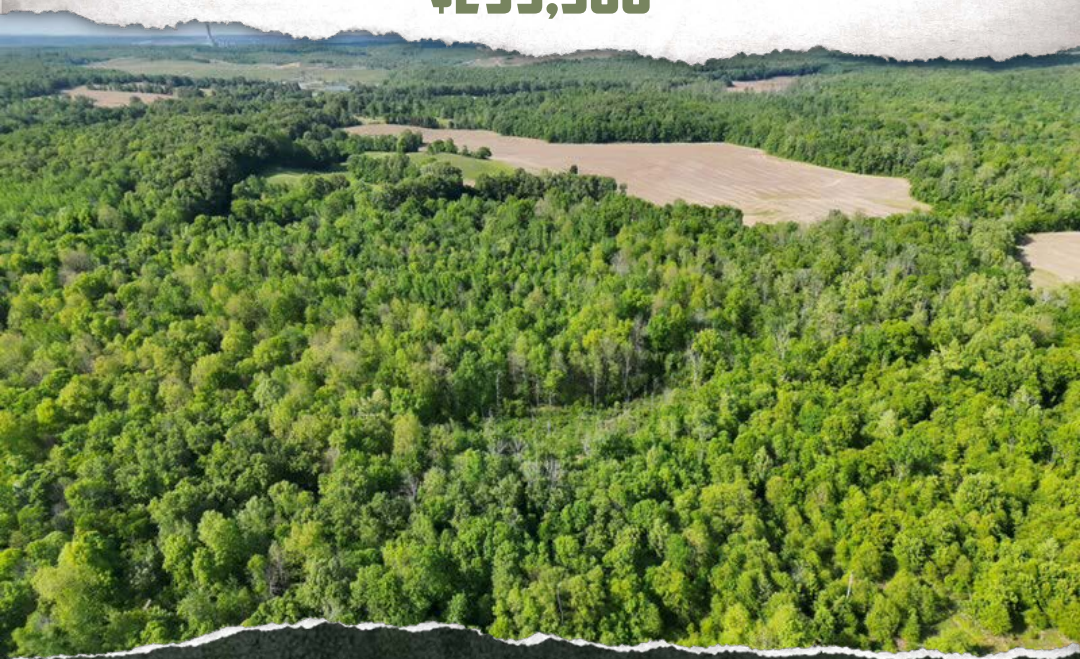




**SMALLTOWN**  
HUNTING PROPERTIES  
& REAL ESTATE<sup>SM</sup>

**90± ACRES**  
**OHIO COUNTY, KY**  
**\$299,900**



OFFICE (270) 795-1080 | [WWW.SMALLTOWNPROPERTIES.COM](http://WWW.SMALLTOWNPROPERTIES.COM)

# THE OHIO 90

# PROPERTY PROFILE

## LOCATION:

- Sheffield Lane  
Centertown, KY 42328
- Ohio County
- 11.5± Miles SW of Hartford
- 32± Miles S of Owensboro
- 56± Miles NE of Bowling Green
- 83± Miles SW of Elizabethton
- 120± Miles N of Nashville, TN
- 123± Miles SW of Louisville

## COORDINATES:

- 37.3774, -87.0682

## TAX INFORMATION:

- Parcel #: 126-7
- Deed Book/Page: 467/419

## PROPERTY USE:

- Recreational
- Hunting
- Potential Home/Cabin Site

## PROPERTY INFORMATION:

- 90± Surveyed Acres
- Mostly Wooded
- Interior Trail System
- Creek Frontage
- Great Access
- Cleared Cabin Site



**SMALLTOWN**  
HUNTING PROPERTIES  
& REAL ESTATE<sup>SM</sup>

**JAMIE ROGERS**

PRINCIPAL BROKER | PRINCIPAL AUCTIONEER

C: 270-791-4142

O: 270-795-1080

[jamie@smalltownproperties.com](mailto:jamie@smalltownproperties.com)

2101 Flint Springs Rd. - Cromwell, KY 42333

[smalltownproperties.com](http://smalltownproperties.com)

Information is believed to be accurate but not guaranteed.

# WELCOME TO THE OHIO 90

**WELCOME TO THE OHIO 90, A RARE HUNTING PROPERTY IN A HIGHLY SOUGHT-AFTER AREA OF OHIO COUNTY, KENTUCKY.** This 90± acre tract is located in Cenertown, outside of Hartford, an area that's famous for producing Boone & Crockett class bucks consistently. Located right off the Green River bottoms and surrounded by agricultural land with great cover and access, it doesn't get much better than this.

The Ohio 90 is mostly wooded and would benefit from a TSI cut, which would provide an instant ROI. The tract features an interior trail system complete with two new bridges that run the outside property border, making for great access in any wind direction. Couple that with interior bedding with large oaks on the outer edge, and the Ohio 90 sets up for great hunting. Deer like to bed here and feed their way out to the adjoining crop fields. The Ohio 90 has been surveyed and has a good entrance as well as a cleared cabin site.

**If you're in the market for a great hunting and recreational tract in Kentucky, call Jamie Rogers today to schedule a private tour and experience #TheSmallTownWay.**



**SMALLTOWN**  
HUNTING PROPERTIES  
& REAL ESTATE<sup>SM</sup>

**JAMIE ROGERS**  
PRINCIPAL BROKER | PRINCIPAL AUCTIONEER  
C: 270-791-4142  
O: 270-795-1080

[jamie@smalltownproperties.com](mailto:jamie@smalltownproperties.com)

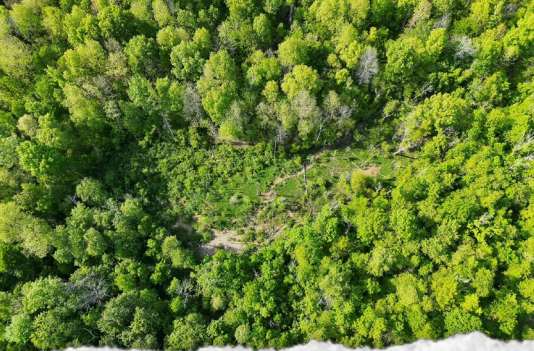
2101 Flint Springs Rd. - Cromwell, KY 42333

[smalltownproperties.com](http://smalltownproperties.com)

Information is believed to be accurate but not guaranteed.

90± ACRES

OHIO COUNTY, KENTUCKY



# SMALLTOWN

HUNTING PROPERTIES  
& REAL ESTATE<sup>SM</sup>

**JAMIE ROGERS**

PRINCIPAL BROKER | PRINCIPAL AUCTIONEER

C: 270-791-4142

O: 270-795-1080

[jamie@smalltownproperties.com](mailto:jamie@smalltownproperties.com)

2101 Flint Springs Rd. - Cromwell, KY 42333

[smalltownproperties.com](http://smalltownproperties.com)

Information is believed to be accurate but not guaranteed.

90± ACRES

OHIO COUNTY, KENTUCKY



**SMALLTOWN**  
HUNTING PROPERTIES  
& REAL ESTATE<sup>SM</sup>

**JAMIE ROGERS**

PRINCIPAL BROKER | PRINCIPAL AUCTIONEER

C: 270-791-4142

O: 270-795-1080

[jamie@smalltownproperties.com](mailto:jamie@smalltownproperties.com)

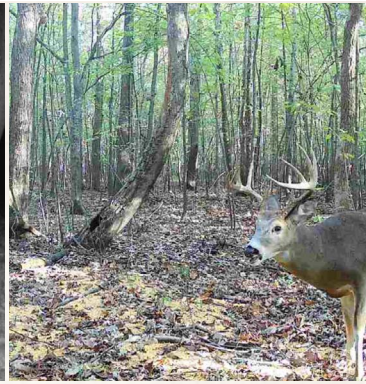
2101 Flint Springs Rd. - Cromwell, KY 42333

[smalltownproperties.com](http://smalltownproperties.com)

Information is believed to be accurate but not guaranteed.

90± ACRES

OHIO COUNTY, KENTUCKY



# SMALLTOWN

HUNTING PROPERTIES  
& REAL ESTATE<sup>SM</sup>

**JAMIE ROGERS**

PRINCIPAL BROKER | PRINCIPAL AUCTIONEER

C: 270-791-4142

O: 270-795-1080

[jamie@smalltownproperties.com](mailto:jamie@smalltownproperties.com)

2101 Flint Springs Rd. - Cromwell, KY 42333

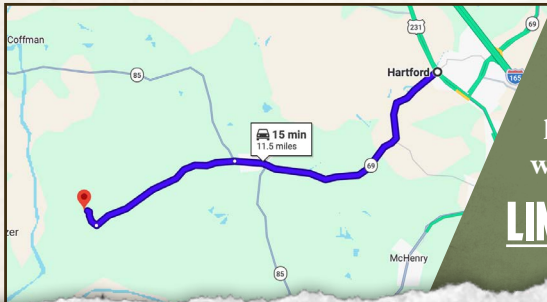
[smalltownproperties.com](http://smalltownproperties.com)

Information is believed to be accurate but not guaranteed.

90± ACRES

OHIO COUNTY, KENTUCKY

land **id.** LINK



Directions From Hartford, KY: Travel south on KY-69 for 11.8 miles. Turn left onto Sheffield Lane, and the property will be 0.75 miles ahead on the left.

[LINK TO GOOGLE MAP DIRECTIONS](#)



**SMALLTOWN**  
HUNTING PROPERTIES  
& REAL ESTATE<sup>SM</sup>

**JAMIE ROGERS**

PRINCIPAL BROKER | PRINCIPAL AUCTIONEER

C: 270-791-4142

O: 270-795-1080

[jamie@smalltownproperties.com](mailto:jamie@smalltownproperties.com)

2101 Flint Springs Rd. - Cromwell, KY 42333

[smalltownproperties.com](http://smalltownproperties.com)

Information is believed to be accurate but not guaranteed.