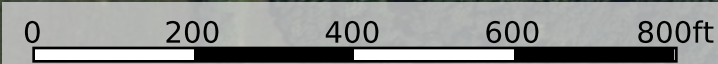
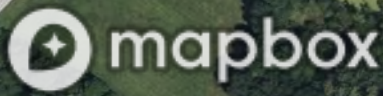


**TRACT 3 - 40± ACRES**

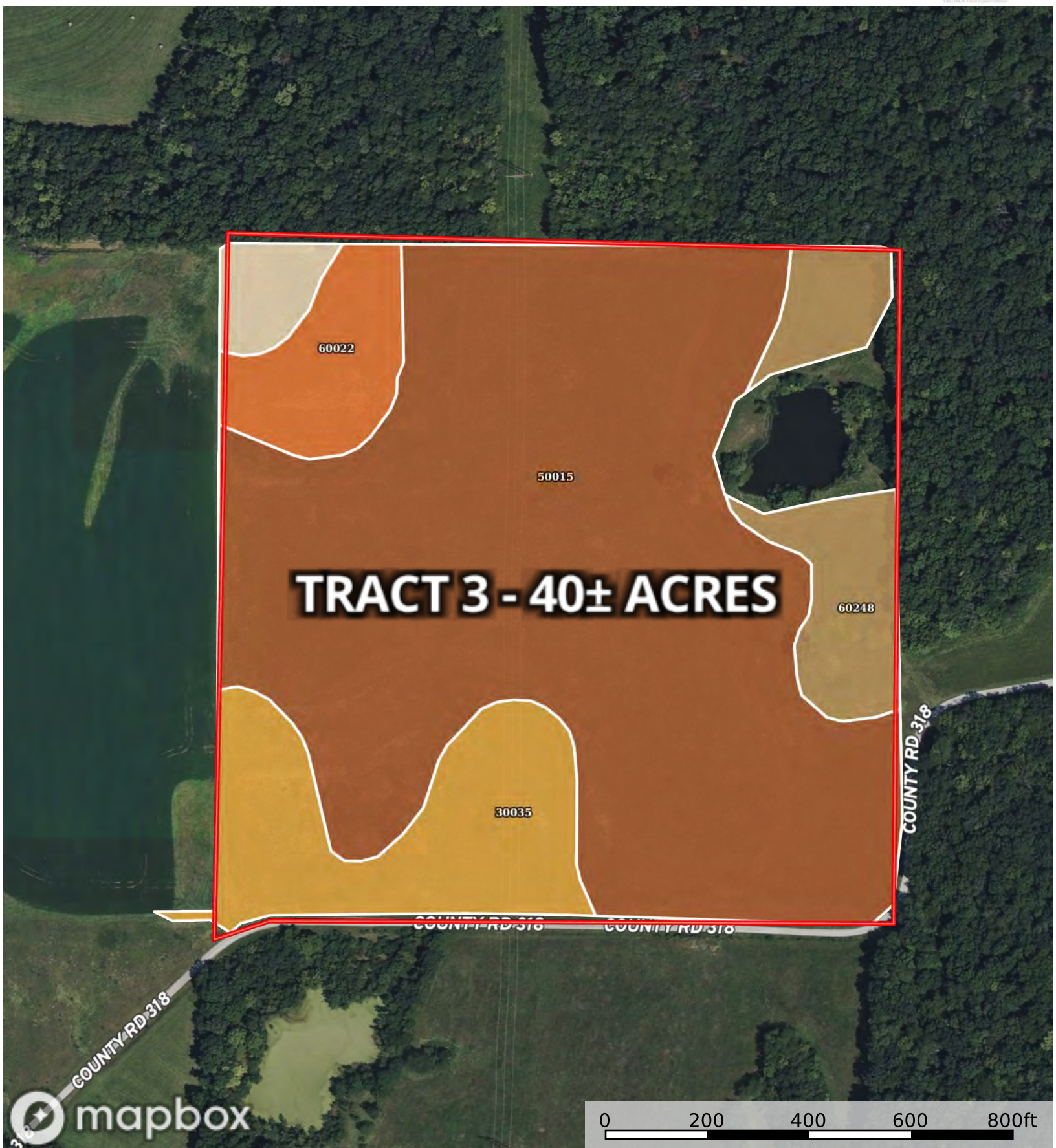
COUNTY RD 318

COUNTY RD 318

COUNTY RD 318



Boundary



Boundary

SOIL CODE	SOIL DESCRIPTION	ACRES	%	CPI	NCCPI	CAP
50015	Adco silt loam, 1 to 5 percent slopes	26.74	70.06	0	63	3e
30035	Armstrong loam, 5 to 12 percent slopes, eroded	5.18	13.57	0	71	3e
60248	Winfield silt loam, 5 to 12 percent slopes, eroded	3.08	8.07	0	74	4e
60022	Leonard silt loam, 1 to 6 percent slopes, eroded	2.29	6.0	0	61	3e
30098	Keswick loam, 5 to 14 percent slopes, eroded	0.88	2.31	0	54	4e
TOTALS		38.17(*)	100%	-	64.65	3.1

(\*) Total acres may differ in the second decimal compared to the sum of each acreage soil. This is due to a round error because we only show the acres of each soil with two decimal.

