

30.85 ± Acres

Close to I-20/I-55 corridor

Hinds County, Jackson, Mississippi



\$400,000



Expect More. Get More.

Property Information

Location:

- Less than 1 mile from Exit 5A
- Exit on I-220

Property Use:

- Unimproved commercial

Coordinates:

- 32.35835, -90.22585

Property Highlights

- 30.85 ± Acres
- Predominantly open land
- Fenced and electronic gate
- 605' of Northside Drive frontage
- Less than 1 mile from I-220



JOSH WREN REALTOR®
O: 601.898.2772 | C: 601.497.9440
Josh@TomSmithLand.com



CHAD WILSON REALTOR®
O: 601.898.2772 | C: 601.750.1970
Chad@TomSmithLand.com

Expect More. Get More.

The Real Estate Experts You Can Trust!



TomSmithLandandHomes.com

Information is believed to be accurate but not guaranteed.

The Property

30.85± Acres

This 30.85± acre unimproved commercial tract offers a rare combination of size, access, and visibility. The property is predominantly open land, fully fenced, and secured by an electronic gate. Located less than one mile from the I-220 Medgar Evers exit, it provides excellent connectivity while maintaining privacy and control. With approximately 605 feet of frontage along Northside Drive, the site is well-positioned for a wide range of commercial or investment uses



JOSH WREN
REALTOR®

O: 601.898.2772 | C: 601.497.9440
Josh@TomSmithLand.com



CHAD WILSON
REALTOR®

O: 601.898.2772 | C: 601.750.1970
Chad@TomSmithLand.com

Expect More. Get More.

TomSmithLandandHomes.com

The Real Estate Experts You Can Trust!

Information is believed to be accurate but not guaranteed.



Aerial Map

[VIEW INTERACTIVE MAP](#)



JOSH WREN

REALTOR®

O: 601.898.2772 | C: 601.497.9440

Josh@TomSmithLand.com



CHAD WILSON

REALTOR®

O: 601.898.2772 | C: 601.750.1970

Chad@TomSmithLand.com

Expect More. Get More.

The Real Estate Experts You Can Trust!

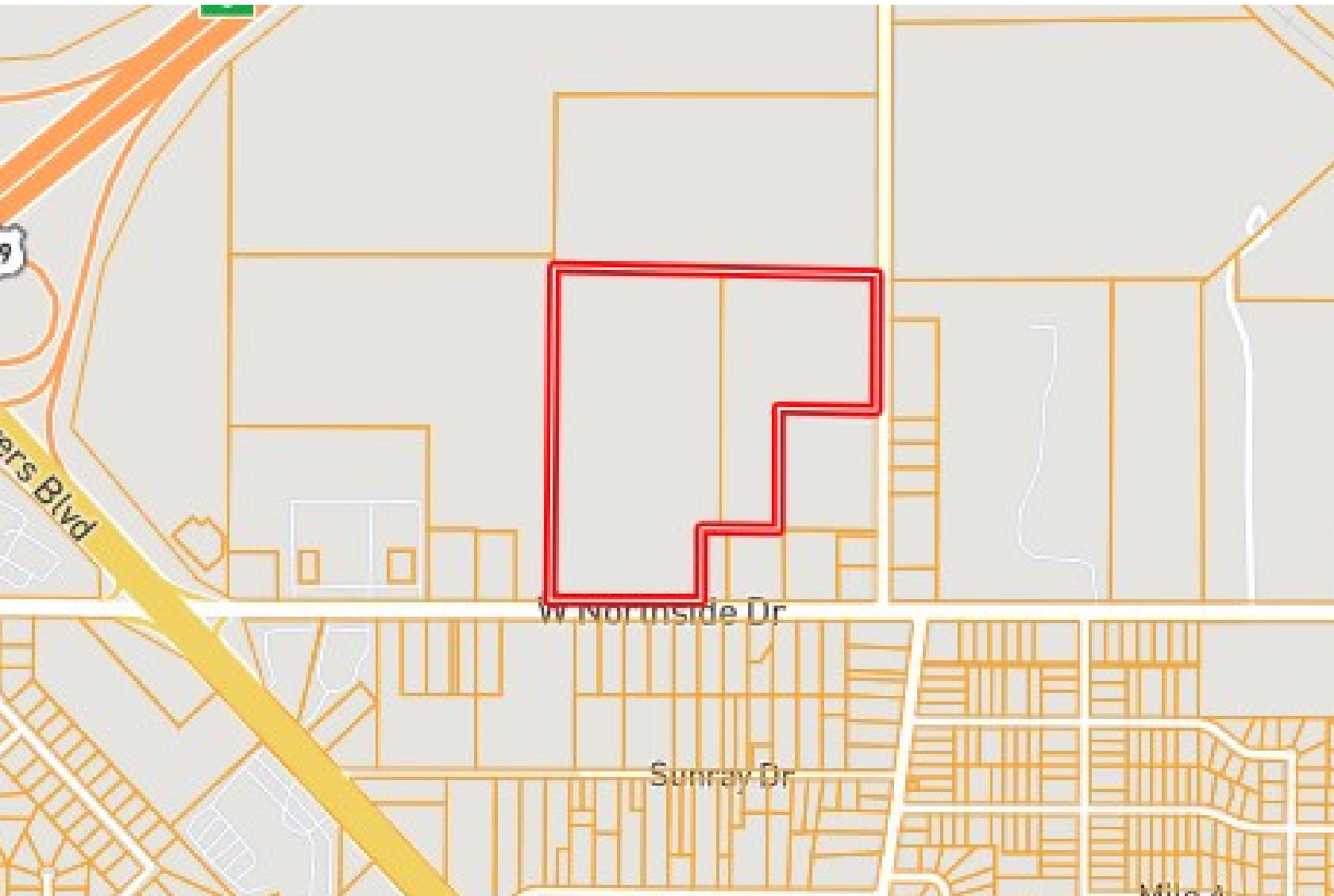


TomSmithLandandHomes.com

Information is believed to be accurate but not guaranteed.

Ownership Map

[VIEW INTERACTIVE MAP](#)



JOSH WREN

REALTOR®

O: 601.898.2772 | C: 601.497.9440

Josh@TomSmithLand.com



CHAD WILSON

REALTOR®

O: 601.898.2772 | C: 601.750.1970

Chad@TomSmithLand.com

Expect More. Get More.

The Real Estate Experts You Can Trust!

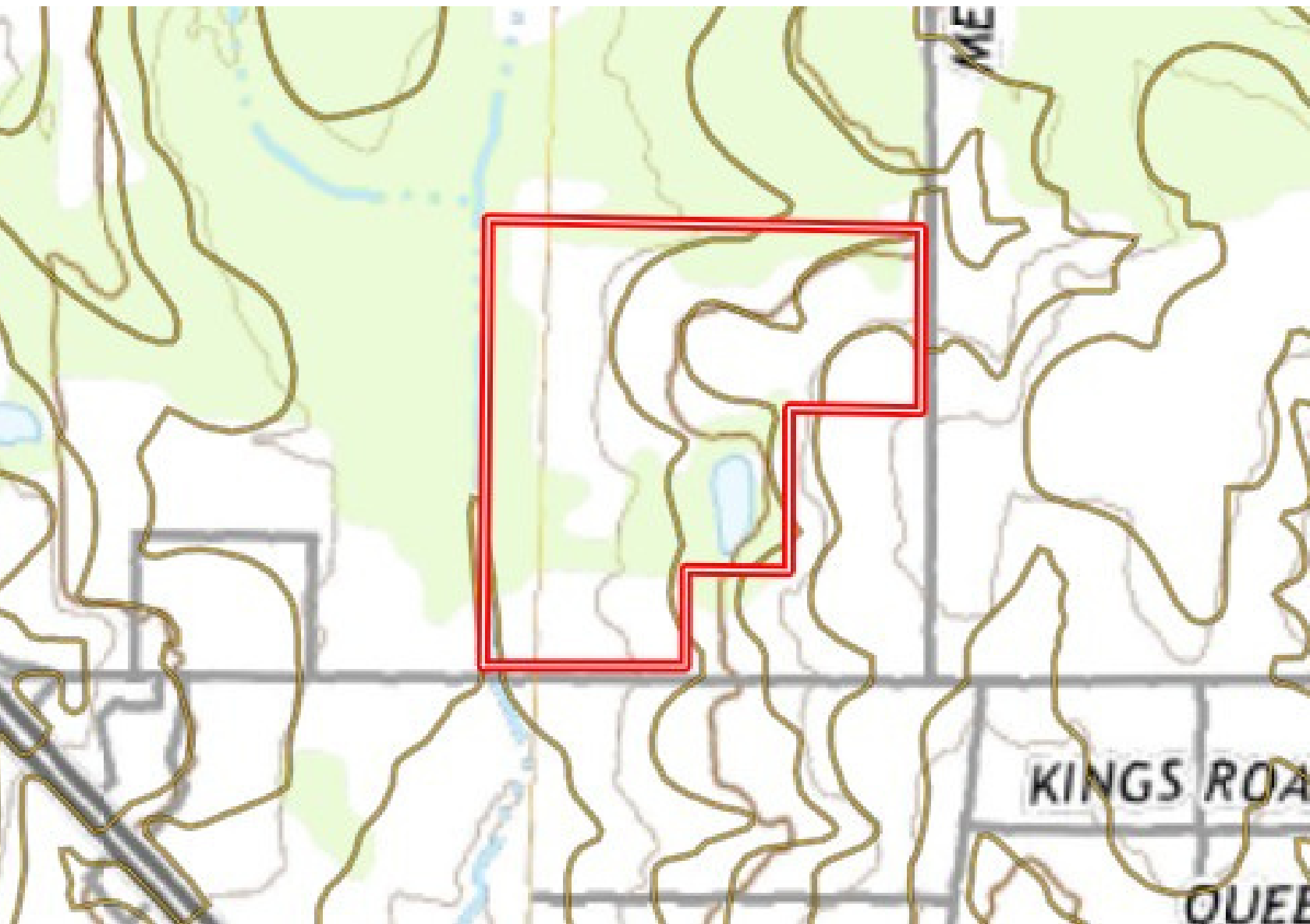
TomSmithLandandHomes.com

Information is believed to be accurate but not guaranteed.



Topo Map

[VIEW INTERACTIVE MAP](#)



JOSH WREN

REALTOR®

O: 601.898.2772 | C: 601.497.9440

Josh@TomSmithLand.com



CHAD WILSON

REALTOR®

O: 601.898.2772 | C: 601.750.1970

Chad@TomSmithLand.com

Expect More. Get More.

The Real Estate Experts You Can Trust!

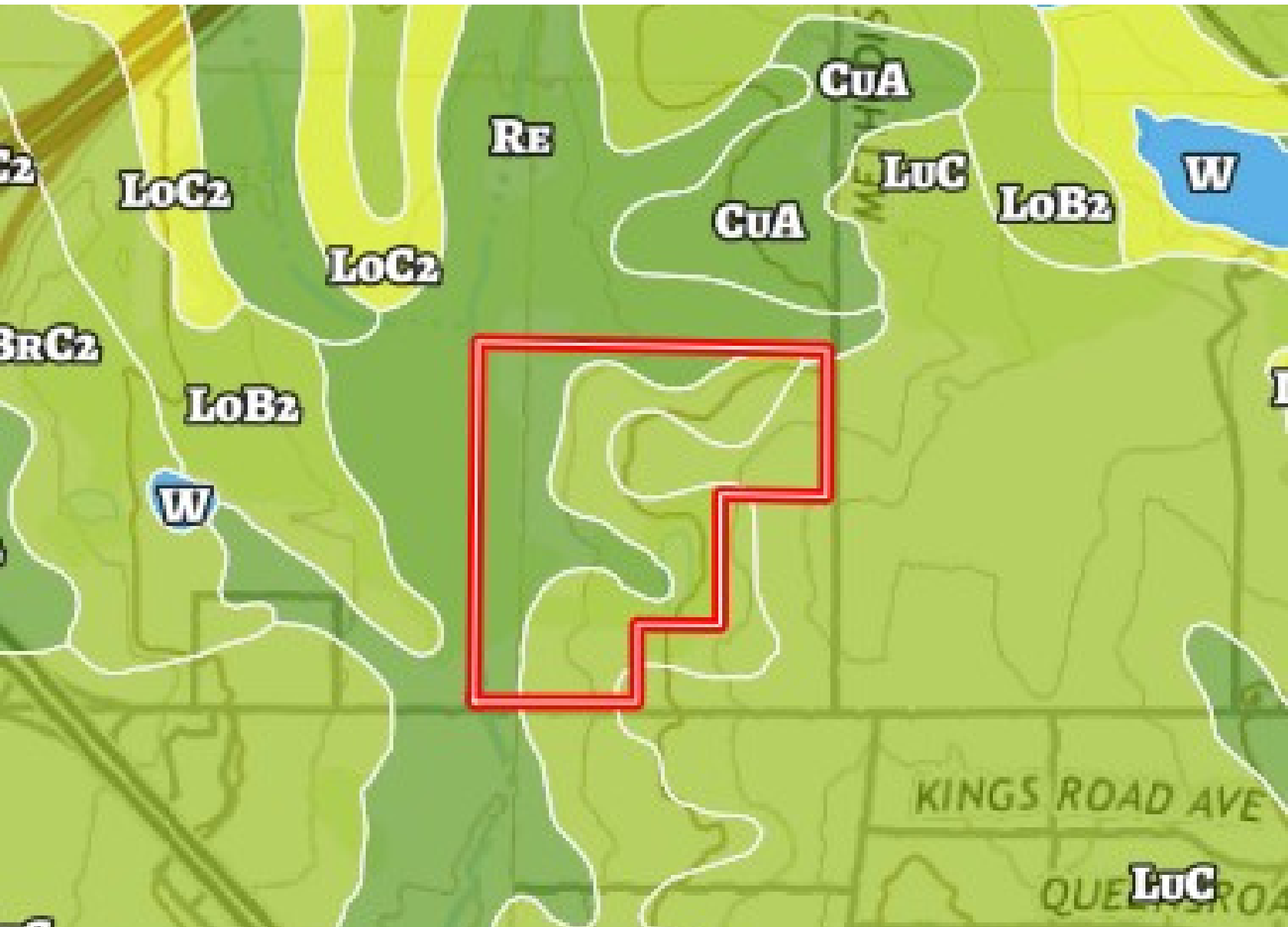


TomSmithLandandHomes.com

Information is believed to be accurate but not guaranteed.

Soil Map

[VIEW INTERACTIVE MAP](#)



JOSH WREN
REALTOR®
O: 601.898.2772 | C: 601.497.9440
Josh@TomSmithLand.com



CHAD WILSON
REALTOR®
O: 601.898.2772 | C: 601.750.1970
Chad@TomSmithLand.com

Expect More. Get More.

The Real Estate Experts You Can Trust!

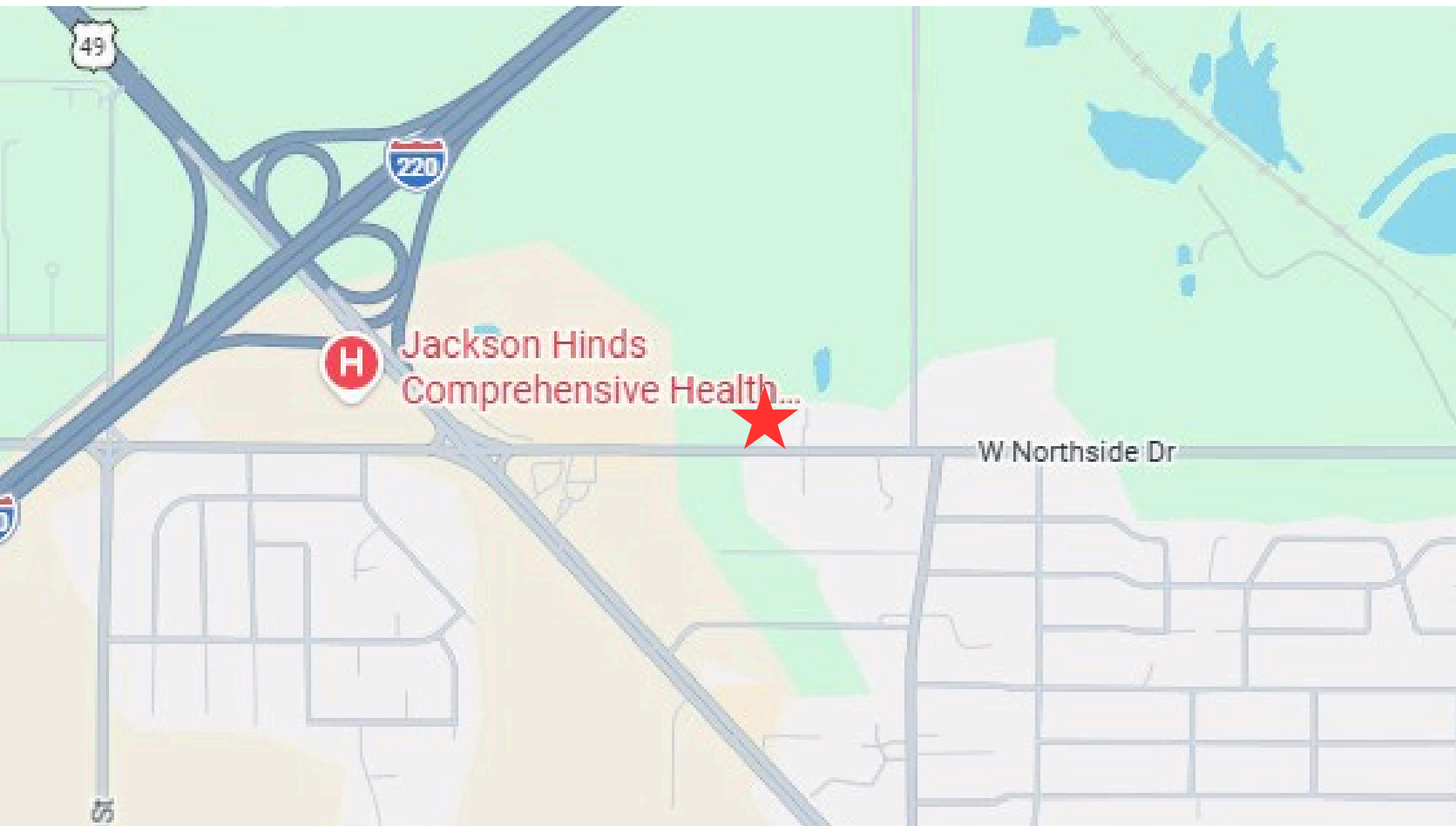
TomSmithLandandHomes.com

Information is believed to be accurate but not guaranteed.



Directional Map

[VIEW INTERACTIVE MAP](#)



From I-55 North and I-220: Go South on I-220 and proceed for 8.4 miles, take exit 5A, turn Left onto Medgar Evers Blvd and proceed for 0.5 miles, turn Left at light onto W Northside Drive, property will be located in 0.3 miles on your left.

JOSH WREN
REALTOR®

O: 601.898.2772 | C: 601.497.9440
Josh@TomSmithLand.com



CHAD WILSON
REALTOR®

O: 601.898.2772 | C: 601.750.1970
Chad@TomSmithLand.com

Expect More. Get More.

The Real Estate Experts You Can Trust!



TomSmithLandandHomes.com

Information is believed to be accurate but not guaranteed.