

LAND FOR SALE



Highway 81 Commercial Site

9.00 ± ACRES | FILLMORE COUNTY, NEBRASKA

Don't miss this opportunity to purchase this well-improved commercial site, located just off of four-lane Highway 81, between Fairmont and Geneva.



Adam D. Pavelka, J.D.

LISTING AGENT:

ADAM D. PAVELKA, J.D.

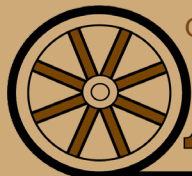
C: 402.984.7744

E: Adam@AgriAffiliates.com

Kent Richter, Mike Wilken, Jeffrey D. Parr



See Full Online
Listing



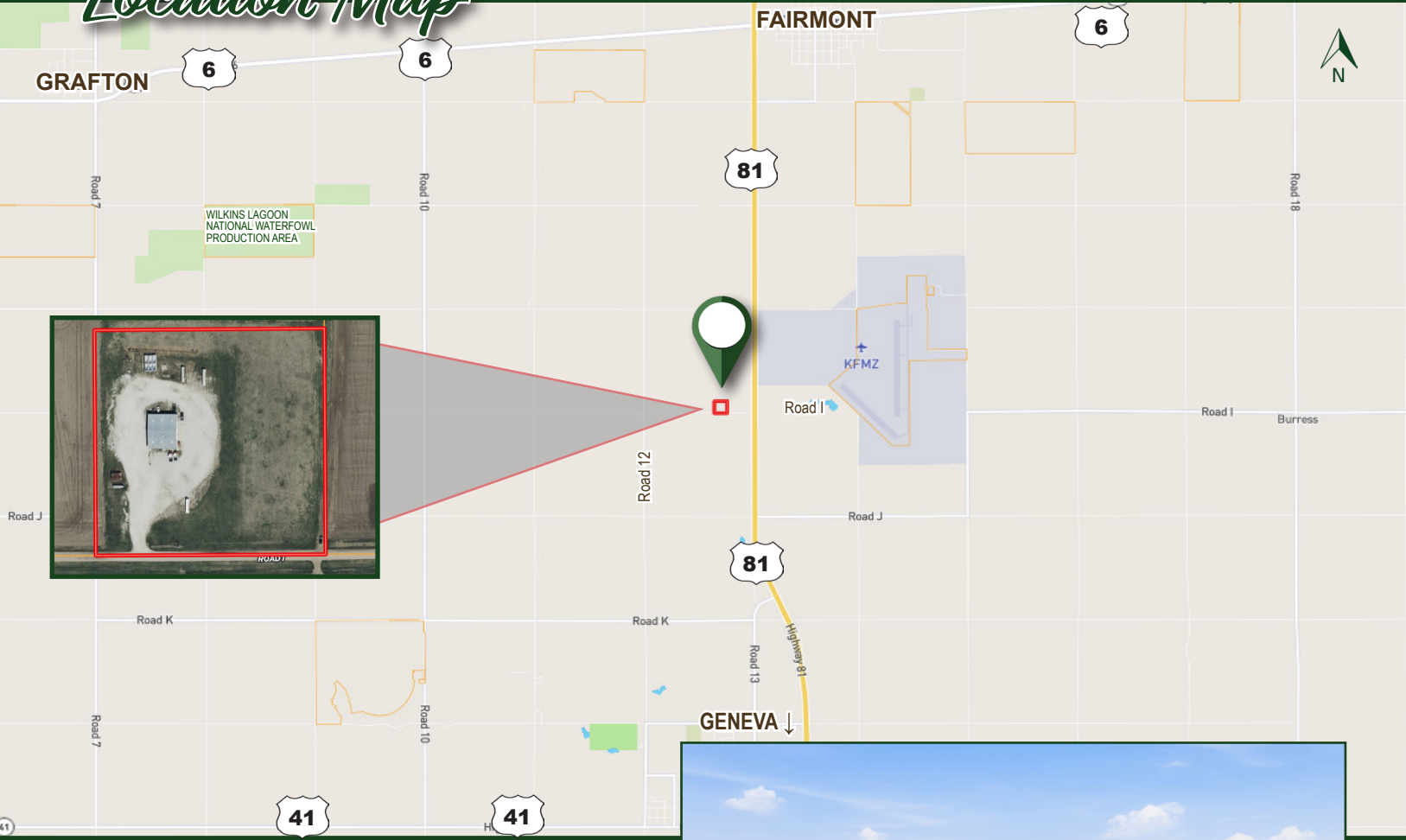
Offered exclusively by:

AGRI AFFILIATES®

Hastings, NE • **AgriAffiliates.com** • 402.519.2777

Information contained herein was obtained from sources deemed reliable. We have no reason to doubt the accuracy, but the information is not guaranteed. Prospective Buyers should verify all information. All maps provided by Agri Affiliates, Inc. are approximations only, to be used as a general guideline, and not intended as survey accurate. As with any agricultural land, this property may include noxious weeds. Agri Affiliates, Inc. and all agents are acting as Agent of the Seller.

Location Map



Property Details

LEGAL DESCRIPTION:

A tract of land contained in the West Half (W½) of the Southeast Quarter (SE¼) of Section Twelve (12), Township Seven (7) North, Range Three (3) West of the 6th P.M., Fillmore County, Nebraska (full legal description available upon request). Also known as, 1214 Road I, Fairmont, NE 68354.

LOCATION:

From Geneva, Nebraska: 2.5 miles north on Highway 81, then .25 mile west on Road I, to the southeastern corner of the property.

ACRES & TAXES:

Tax-Assessed Acres | 9.00 ± acres
2025 Real Estate Taxes | \$1,477.72

LEASES:

Full possession upon closing!

NRD:

Upper Big Blue Natural Resources District

COMMENTS:

- Well-improved county road access just ¼ mile off of Highway 81
- 6,956 square foot fully-insulated shop with heat
- 14 ft. x 14 ft., multiple overhead door access from both the east and west sides with automatic openers
- Two office areas on the north and south sides of the building with storage areas and adjacent restrooms
- Full cement floors
- Floor drains and a washbay area
- Well-improved, rocked parking lot
- Steel frame construction
- Underground fuel storage that was satisfactorily tested on June 9, 2025. Testing report available for review upon request.
- Serviced by natural gas and fiber internet
- Perfect location for any sort of commercial or agricultural enterprise

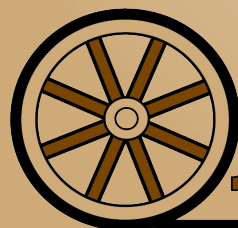
PRICE:

\$445,000.00





**Excellent opportunity to purchase
this conveniently located commercial
site, with amenities galore!**



AGRI AFFILIATES®

Hastings, NE • AgriAffiliates.com • 402.519.2777 • f @ X in v