



# SMALLTOWN

HUNTING PROPERTIES  
& REAL ESTATE<sup>SM</sup>

**60.7± ACRES**  
**SMITH COUNTY, MS**  
**\$165,000**



OFFICE (769) 888-2522 | [WWW.SMALLTOWNPROPERTIES.COM](http://WWW.SMALLTOWNPROPERTIES.COM)

# THE SMITH 60.7

## PROPERTY PROFILE

### LOCATION:

- 2181 Smith County Road 559  
Pulaski, MS 39152
- Access via Deeded Easement
- Borders the Bienville  
National Forest
- Smith County
- 47± Miles SE of Jackson
- 64± Miles SW of Meridian
- 150± Miles N of Slidell, LA
- 175± Miles NE of Hammond, LA

### COORDINATES:

- 32.17595, -89.58375

### TAX INFORMATION:

- 2025 Taxes: \$158.51

### PROPERTY USE:

- Recreational
- Hunting
- Potential Home Site

### PROPERTY INFORMATION:

- 60.7± Acres
- Recently Harvested Timber
- Scattered Oaks
- New 3± Acre Pond
- Perimeter Fire Lane
- Well-Maintained  
Internal Roads
- Deer/Turkey/Small Game
- No Utilities



**SMALLTOWN**  
HUNTING PROPERTIES  
& REAL ESTATE<sup>SM</sup>

**BRADEN SMITH**

LAND SPECIALIST

C: 601-757-9193

O: 769-888-2522

[braden@smalltownproperties.com](mailto:braden@smalltownproperties.com)

4848 Main St. - Flora, MS 39071

[smalltownproperties.com](http://smalltownproperties.com)

Information is believed to be accurate but not guaranteed.

# WELCOME TO THE SMITH 60.7

**INTRODUCING THE SMITH 60.7 IN PULASKI, MISSISSIPPI.** This 60.7± acre property in Smith County consists primarily of recently harvested timberland with scattered mature oak trees and a Streamside Management Zone (SMZ) winding through the tract, providing excellent wildlife habitat. The current owner has invested in the property by constructing a brand-new 3± acre pond, ready for you to stock and manage as you choose. Well-maintained internal roads provide easy access throughout the property, while a perimeter fire lane surrounds the entire tract, making access and management convenient.

Deer and turkey are frequently seen on the Smith 60.7, making it an excellent choice for hunting and outdoor recreation. The layout of this tract also sets up exceptionally well for hunting during a north wind, allowing hunters to access much of the property while minimizing disturbance to wildlife.



**SMALLTOWN**  
HUNTING PROPERTIES  
& REAL ESTATE<sup>SM</sup>

**BRADEN SMITH**

LAND SPECIALIST

C: 601-757-9193

O: 769-888-2522

[braden@smalltownproperties.com](mailto:braden@smalltownproperties.com)

4848 Main St. - Flora, MS 39071

[smalltownproperties.com](http://smalltownproperties.com)

Information is believed to be accurate but not guaranteed.

# MORE ABOUT THE SMITH 60.7

One of the tract's most attractive features is its direct border with the Bienville National Forest, giving you access to thousands of additional acres of hunting and recreational opportunities. This unique combination allows a 60.7± acre property to hunt much larger than its actual size.

Whether you're looking for a hunting property, a weekend getaway, a future homesite, or a long-term land investment, the Webster 60.7 offers outstanding opportunities in a quiet rural setting.

**Contact Braden Smith today to schedule a private showing and experience #TheSmallTownWay.**



**SMALLTOWN**  
HUNTING PROPERTIES  
& REAL ESTATE<sup>SM</sup>

**BRADEN SMITH**

LAND SPECIALIST

C: 601-757-9193

O: 769-888-2522

[braden@smalltownproperties.com](mailto:braden@smalltownproperties.com)

4848 Main St. - Flora, MS 39071

[smalltownproperties.com](http://smalltownproperties.com)

Information is believed to be accurate but not guaranteed.

60.7± ACRES

SMITH COUNTY, MISSISSIPPI



# SMALLTOWN

HUNTING PROPERTIES  
& REAL ESTATE<sup>SM</sup>

**BRADEN SMITH**

LAND SPECIALIST

C: 601-757-9193

O: 769-888-2522

[braden@smalltownproperties.com](mailto:braden@smalltownproperties.com)

4848 Main St. - Flora, MS 39071

[smalltownproperties.com](http://smalltownproperties.com)

Information is believed to be accurate but not guaranteed.

60.7± ACRES

SMITH COUNTY, MISSISSIPPI



**SMALLTOWN**  
HUNTING PROPERTIES  
& REAL ESTATE<sup>SM</sup>

**BRADEN SMITH**

LAND SPECIALIST

C: 601-757-9193

O: 769-888-2522

[braden@smalltownproperties.com](mailto:braden@smalltownproperties.com)

4848 Main St. - Flora, MS 39071

[smalltownproperties.com](http://smalltownproperties.com)

*Information is believed to be accurate but not guaranteed.*

60.7± ACRES

SMITH COUNTY, MISSISSIPPI



**SMALLTOWN**  
HUNTING PROPERTIES  
& REAL ESTATE<sup>SM</sup>

**BRADEN SMITH**

LAND SPECIALIST

C: 601-757-9193

O: 769-888-2522

[braden@smalltownproperties.com](mailto:braden@smalltownproperties.com)

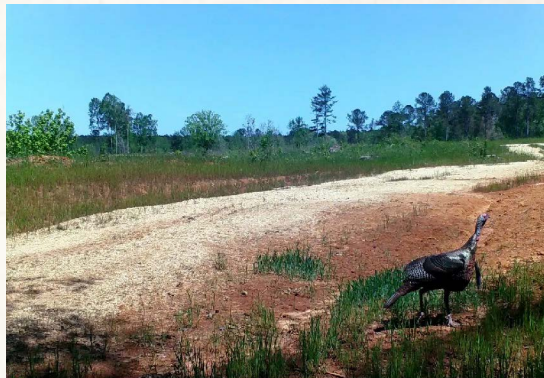
4848 Main St. - Flora, MS 39071

[smalltownproperties.com](http://smalltownproperties.com)

Information is believed to be accurate but not guaranteed.

60.7± ACRES

SMITH COUNTY, MISSISSIPPI



**SMALLTOWN**  
HUNTING PROPERTIES  
& REAL ESTATE<sup>SM</sup>

**BRADEN SMITH**

LAND SPECIALIST

C: 601-757-9193

O: 769-888-2522

[braden@smalltownproperties.com](mailto:braden@smalltownproperties.com)

4848 Main St. - Flora, MS 39071

[smalltownproperties.com](http://smalltownproperties.com)

Information is believed to be accurate but not guaranteed.

60.7± ACRES

SMITH COUNTY, MISSISSIPPI



**SMALLTOWN**  
HUNTING PROPERTIES  
& REAL ESTATE<sup>SM</sup>

**BRADEN SMITH**

LAND SPECIALIST

C: 601-757-9193

O: 769-888-2522

[braden@smalltownproperties.com](mailto:braden@smalltownproperties.com)

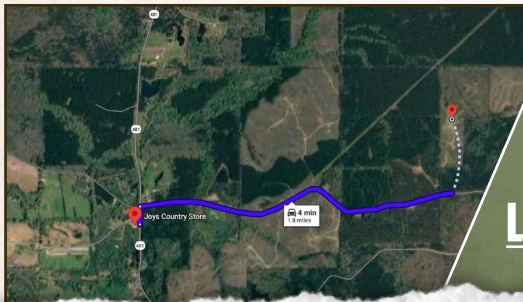
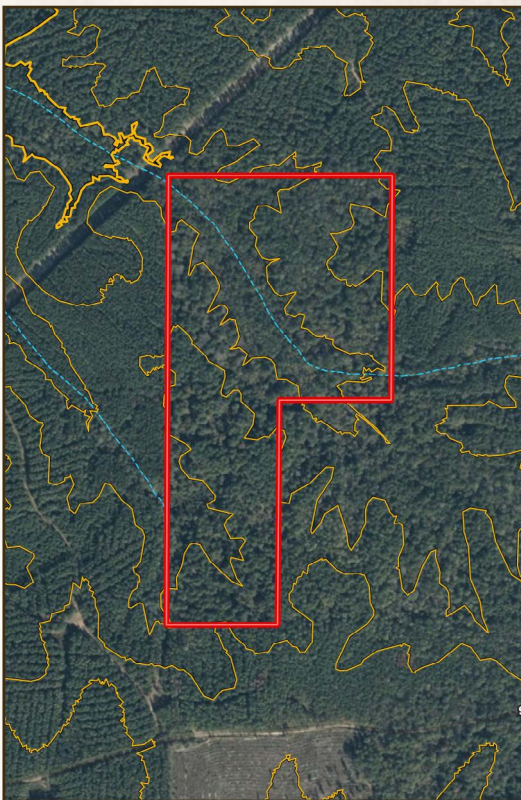
4848 Main St. - Flora, MS 39071

[smalltownproperties.com](http://smalltownproperties.com)

Information is believed to be accurate but not guaranteed.

60.7± ACRES SMITH COUNTY, MISSISSIPPI

land id. LINK



Directions from Joys Country Store in Pulaski, MS: Travel on Smith County Road 559 for 1.7 miles to the entrance of the deeded easement on the right.

[LINK TO GOOGLE MAP DIRECTIONS](#)



**SMALLTOWN**  
HUNTING PROPERTIES  
& REAL ESTATE<sup>SM</sup>

**BRADEN SMITH**

LAND SPECIALIST

C: 601-757-9193

O: 769-888-2522

[braden@smalltownproperties.com](mailto:braden@smalltownproperties.com)

4848 Main St. - Flora, MS 39071

[smalltownproperties.com](http://smalltownproperties.com)

Information is believed to be accurate but not guaranteed.