

**6± ACRES**

**Foxworth, MS**

**Marion County**



**\$48,000**



**Expect More. Get More.**

**TomSmithLandandHomes.com**

**Office: 601.898.2772**

# Property Information

## Location:

- Hwy 35, Foxworth, MS

## Coordinates:

- 31.1279, -89.8349

## Property Use:

- Development
- Residential
- Investment

# Property Highlights

- 4 Lots Ready for Development
- Hwy 35 Road Frontage
- Close to Columbia, MS & Foxworth, MS



Dale Wilds



David Belden

Tom Smith Land and Homes

**DALE WILDS** REALTOR®

C: 662.715.7109 | Dale@TomSmithLand.com

**DAVID BELDEN** ASSOCIATE BROKER, ALC®

C: 601.415.3884 | DBelden@TomSmithLand.com

**Expect More. Get More.**

*The Real Estate Experts You Can Trust!*



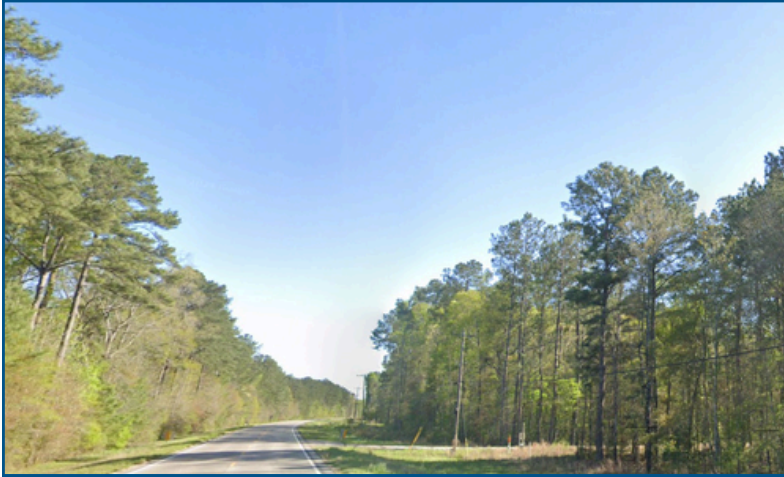
**TomSmithLandandHomes.com**

Information is believed to be accurate but not guaranteed.

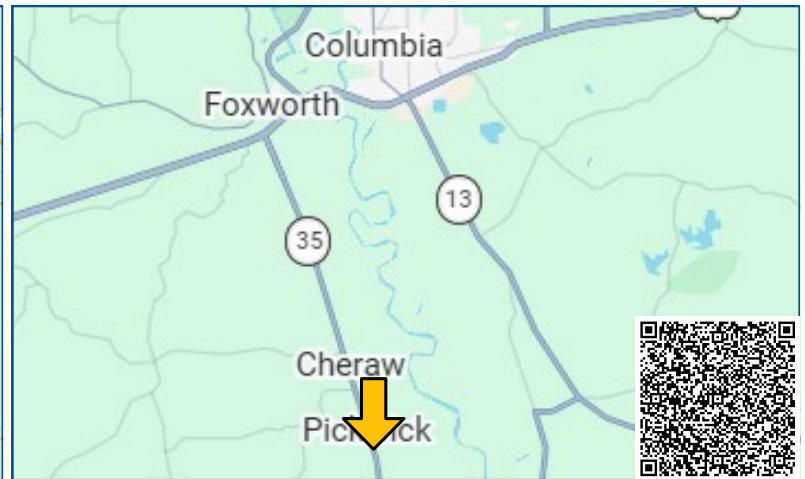
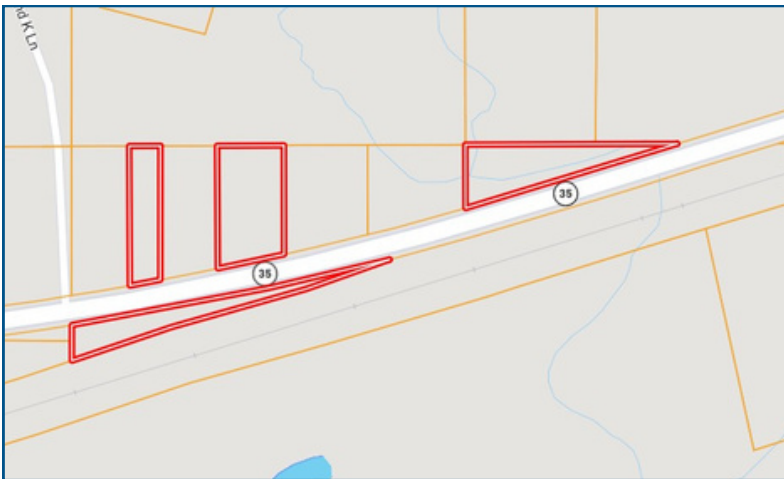
# The Property

# 6± Acres

This 6± acre property, located just south of Foxworth, MS, offers a great opportunity for investors or those seeking multiple homesites. The property is divided into four separate parcels, including approximately 2± acres, 2.04± acres, 1.12± acres, and 1.32± acres, providing flexibility for a variety of uses. Whether you're looking to build multiple homes, create a small homestead setup, or hold as an investment, this property offers plenty of potential. Enjoy the quiet rural setting while still being conveniently located near Foxworth and the surrounding areas.



[VIEW INTERACTIVE MAP](#)



**DALE WILDS**  
REALTOR®  
C: 662.715.7109  
Dale@TomSmithLand.com



**DAVID BELDEN**  
ASSOCIATE BROKER, ALC®  
C: 601.415.3884  
DBelden@TomSmithLand.com

**Expect More. Get More.**

*The Real Estate Experts You Can Trust!*

[TomSmithLandandHomes.com](http://TomSmithLandandHomes.com)

Information is believed to be accurate but not guaranteed.

