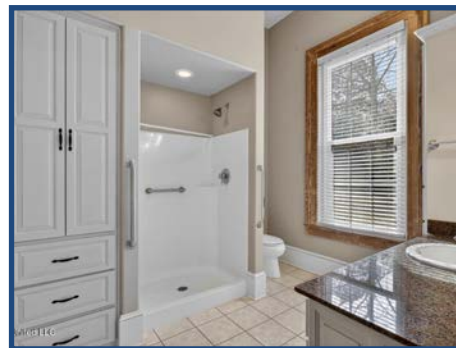
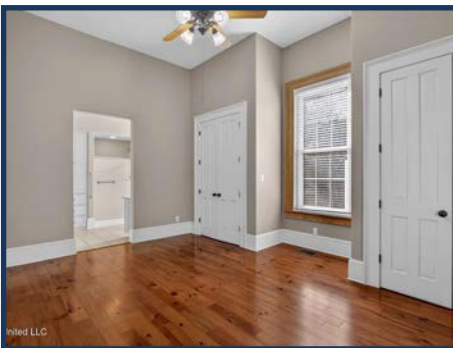
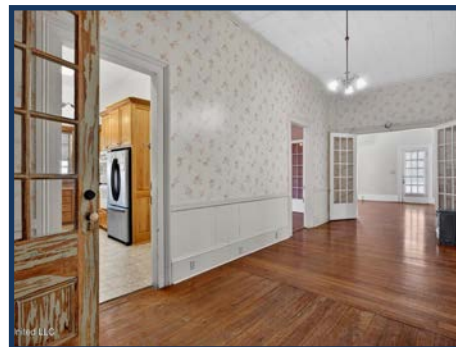




This beautifully preserved 5-bedroom, 3-bath Craftsman bungalow, built in 1920, is located in the charming small town of Summit, just two blocks from the heart of downtown. Full of character and timeless appeal, the home features heart pine flooring, generously sized rooms with soaring 14-foot ceilings, a formal dining room, and a stunning wide hallway that makes a memorable first impression. The modern kitchen blends convenience with historic charm and includes a spacious walk-in pantry, while a large mudroom just off the back entrance adds everyday practicality. Three of the five bedrooms are exceptionally large, with two showcasing beautiful antique fireplaces that reflect the home's rich history. The primary suite, located at the rear of the home, offers a more modern touch with double closets and an updated bathroom, while still maintaining the wood-style flooring and tall ceilings that complement the rest of the house. Just off the primary suite is a cozy den or sitting area, perfect for a quiet retreat. Situated on a large lot shaded by scattered oak trees, the property also features a concrete driveway, single carport, expansive front porch, spacious workshop, and plenty of room for gardens or a children's play area. Upstairs, you'll find two additional small bedrooms, a full bathroom, and an unfinished space ideal for storage or a future game room. With central heat and air and move-in ready condition, this 105-year-old home offers the perfect blend of historic charm and modern comfort. Located within walking distance of Summit's thriving downtown filled with local restaurants and shops, this spacious and affordable historic home is a rare find. Call today to schedule a showing.

504 W Railroad Avenue, Summit, MS

31.281789, -90.467329 GPS



\$247,000

5 Bed/3 Bath
0.75± Acres
MLS #4140508



Scott Campbell

Broker Associate
scottcampbell050@gmail.com
Office: (601) 250-0017
Cell: (601) 248-4595
SouthernStatesRealty.com