

7.48± Acres

Madison County

Central Blvd #183, Flora, MS, 39071



\$210,000



Expect More. Get More.

TomSmithLandandHomes.com

Office: 601.898.2772

Property Information

Location:

- Central Blvd #183, Flora, MS, 39071

Property Use:

- Homesite

Coordinates:

- 32.54265, -90.3287

Property Highlights

- 7.48± Acres
- 100x125 Dirt House Pad
- Wooded and Cleared
- Water and Power Available



Expect More. Get More.

**LAYTON
HORNE**
REALTOR®

Office: 601.898.2772
Cell: 601.624.1282

Layton@TomSmithLand.com

**A Real Estate Expert
You Can Trust!**



The Property

7.48± Acres

This 7.48± acre tract in Flora, MS, offers an excellent opportunity for a homesite or small acreage retreat. The property is primarily wooded, providing privacy and a natural setting, with a cleared area already in place for building. A 100x125 dirt house pad has been established, helping streamline the construction process for your future home. Utilities are conveniently available, with access to both water and power nearby. The combination of wooded acreage and a prepared homesite makes this property well-suited for those looking to build in a quiet, rural environment while still being within a short drive of town amenities. Whether you're planning a primary residence or a weekend getaway, this tract provides a solid foundation to bring your vision to life. Buyer to verify all information, including utilities, acreage, and suitability for intended use.



**LAYTON
HORNE**
REALTOR®

Office: 601.898.2772
Cell: 601.624.1282

Layton@TomSmithLand.com



The Property



**LAYTON
HORNE**
REALTOR®

Office: 601.898.2772

Cell: 601.624.1282

Layton@TomSmithLand.com



Expect More. Get More.

Aerial Photos



**LAYTON
HORNE**
REALTOR®

Office: 601.898.2772
Cell: 601.624.1282

Layton@TomSmithLand.com

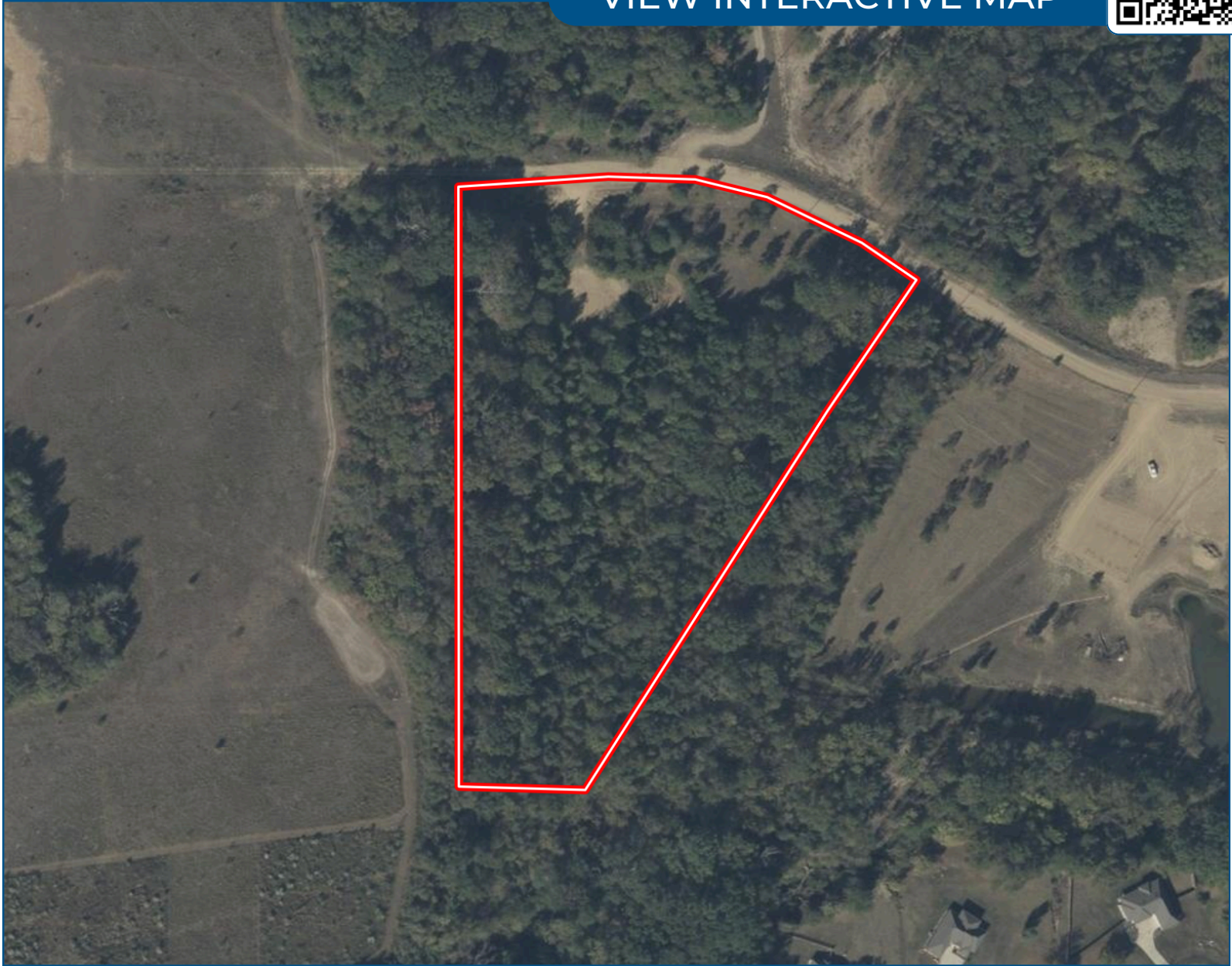


Expect More. Get More.

Aerial Map



[VIEW INTERACTIVE MAP](#)



**LAYTON
HORNE**
REALTOR®

Office: 601.898.2772
Cell: 601.624.1282

Layton@TomSmithLand.com

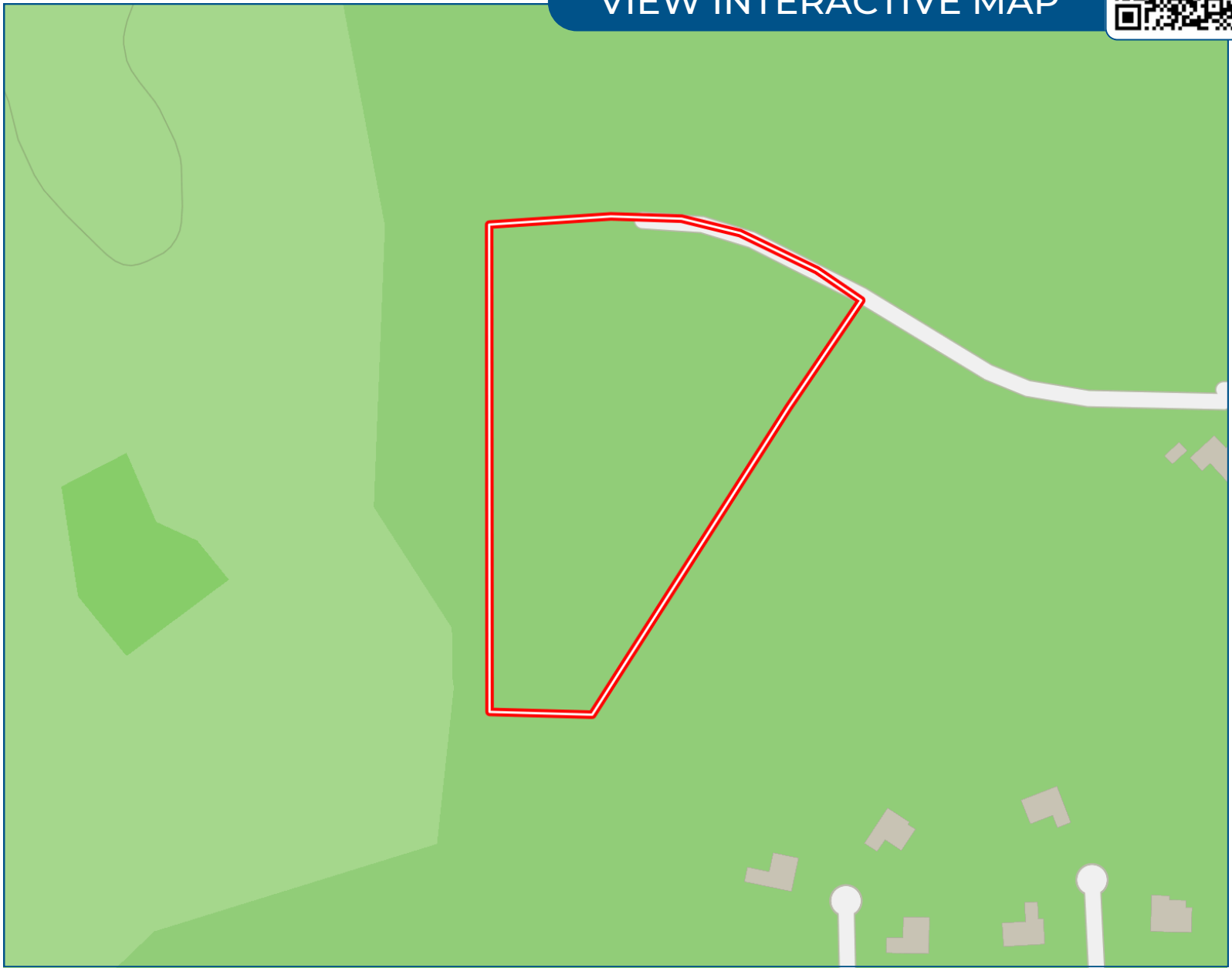


Expect More. Get More.

Ownership Map



[VIEW INTERACTIVE MAP](#)



**LAYTON
HORNE**
REALTOR®

Office: 601.898.2772
Cell: 601.624.1282

Layton@TomSmithLand.com



Expect More. Get More.

Topo Map



[VIEW INTERACTIVE MAP](#)



**LAYTON
HORNE**
REALTOR®

Office: 601.898.2772
Cell: 601.624.1282

Layton@TomSmithLand.com



Expect More. Get More.

Soil Map



[VIEW INTERACTIVE MAP](#)



**LAYTON
HORNE**
REALTOR®

Office: 601.898.2772
Cell: 601.624.1282

Layton@TomSmithLand.com

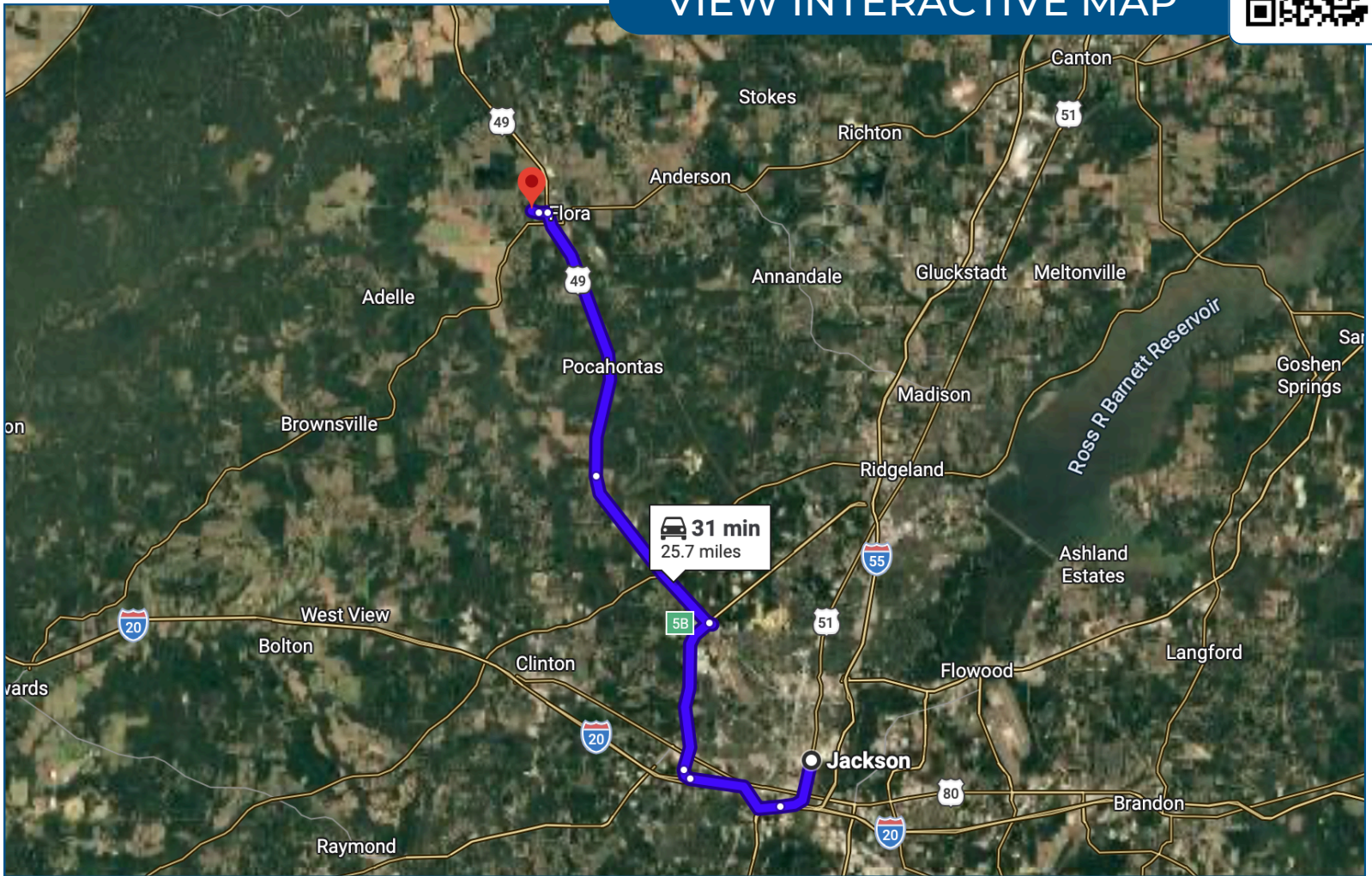


Expect More. Get More.

Directional Map



VIEW INTERACTIVE MAP



From Jackson, MS:

Head north on I-220, then take US-49 North toward Flora. Continue on this route for approximately 25.2 miles, which should take around 27 minutes. Once you reach Central Boulevard, continue driving on Central Blvd for about 0.5 miles (roughly 3 minutes) until you arrive at your destination.

**LAYTON
HORNE**
REALTOR®

Office: 601.898.2772
Cell: 601.624.1282

Layton@TomSmithLand.com



Expect More. Get More.

Listing Agent



Layton Horne

Realtor/Land Agent

Layton Horne is a dedicated realtor from Flora, Mississippi, passionate about helping clients find their perfect homes and investment properties. A proud graduate of Tri-County Academy, Layton has a deep connection to the local community and a strong understanding of the area's real estate market. When not working with clients, Layton enjoys hunting and fishing, making the most of Mississippi's great outdoors. With a commitment to hard work, integrity, and local expertise, Layton ensures every real estate transaction is a success.

OFFICE: 601.898.2772

CELL: 601.624.1282

Layton@TomSmithLand.com

CALL ME TODAY!



Expect More. Get More.