

Diverse Family Estate

354± Acres in Madison County, MS

333 Beaverdam Road, Camden, MS



\$2,175,000



Expect More. Get More.

Property Information

Location:

- 333 Beaverdam Road,
Camden, MS 39045

Coordinates:

- 32.77495, -89.7731

Property Use:

- Residential
- Hunting
- Timberland
- Pastureland

Property Highlights

- 354± Acres
- The Main Residence
 - 2,250± Sq Ft
 - 2 Bedroom, 2 Bathrooms
 - Built in 2022
- The Workshop
 - 48' x 80' Enclosed Workshop
 - 16-Foot Roll-Up Doors
- The Horse Barn
 - 25' x 75' Horse Barn
 - 8 Stalls
 - Tack & Feed Room
 - Exterior Wash Rack
 - Round Pen



TOM SMITH
ALC®, BROKER
Office: 601.898.2772
Cell: 601.454.9397
Tom@TomSmithLand.com

**Call The Land Man
Today!**



The Estate

354± Acres

Set across 354± breathtaking acres in Madison County, Mississippi, this remarkable estate offers a rare combination of privacy, natural beauty, and turnkey functionality—creating the ideal setting for a legacy family property or premier recreational retreat. A winding, scenic drive leads you through the landscape and up to an impressive double-gated entrance, setting the tone for what lies beyond. From the moment you arrive, it's clear this property is something special. Built in 2022, the thoughtfully designed 2,250± square foot home blends modern comfort with timeless craftsmanship. This single-story residence features two bedrooms and two bathrooms, highlighted by soaring 21-foot beamed ceilings that create a grand yet inviting atmosphere. The spacious kitchen is designed for both everyday living and entertaining, complete with a large island, walk-in pantry, and dedicated breakfast area. The primary suite offers a private retreat with 10-foot ceilings, double vanities, a large jetted tub, separate walk-in shower, and generous closet space. High-end finishes—including custom cabinetry, granite countertops throughout, wood laminate flooring, and dual tankless water heaters—reflect the quality and attention to detail found in every corner of the home. Double French doors open to a back porch that captures some of the most stunning views in Central Mississippi. Here, you can enjoy peaceful mornings or unwind in the evening while watching wildlife gather below and sunsets stretch across the horizon—occasionally accompanied by the sight of a soaring bald eagle. Beyond the home, the improvements are equally impressive. A 48' x 80' fully enclosed workshop features four 16-foot roll-up doors, including a recessed bay designed for working on larger equipment such as tractors and trailers. With a full concrete foundation, the space is ideal for storage, projects, or commercial-grade use. Directly across from the workshop, the 25' x 75' horse barn is perfectly positioned for efficiency and ease of use. It includes eight stalls, an office, tack room, and feed room, along with an exterior wash rack, round pen, and turnout area—making it a complete equestrian setup. The land itself is as diverse as it is beautiful. Approximately 200± acres are in mature, 25-year-old pine timber, complemented by 45± acres of hardwood draws and bottomland. An additional 50± acres of recently harvested timberland is being transitioned into pasture, while 40± acres of younger planted pine provide excellent bedding habitat for wildlife. The balance of the acreage consists of established food plots, internal roads, pastureland, and well-planned improvements. This property offers exceptional hunting opportunities, with abundant populations of whitetail deer, turkey, and small game. A well-maintained internal road system provides easy access throughout the entire tract. Located on Beaverdam Road in Madison County, this private estate is shown by appointment only. Proof of funds is required prior to scheduling. This is more than just a property—it's a place to build a legacy.

**TOM
SMITH**
ALC®, BROKER

Office: 601.898.2772

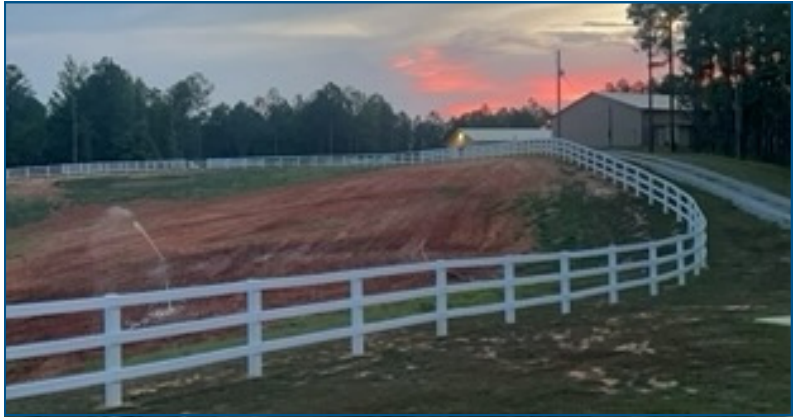
Cell: 601.454.9397

Tom@TomSmithLand.com



The Estate

VIEW PROPERTY VIDEO



**TOM
SMITH**

ALC®, BROKER

Office: 601.898.2772

Cell: 601.454.9397

Tom@TomSmithLand.com



Expect More. Get More.

The Estate



**TOM
SMITH**

ALC®, BROKER

Office: 601.898.2772

Cell: 601.454.9397

Tom@TomSmithLand.com



Expect More. Get More.

The Residence



**TOM
SMITH**

ALC®, BROKER

Office: 601.898.2772

Cell: 601.454.9397

Tom@TomSmithLand.com



Expect More. Get More.

The Residence



**TOM
SMITH**

ALC®, BROKER

Office: 601.898.2772

Cell: 601.454.9397

Tom@TomSmithLand.com



Expect More. Get More.

The Residence



**TOM
SMITH**

ALC®, BROKER

Office: 601.898.2772

Cell: 601.454.9397

Tom@TomSmithLand.com



Expect More. Get More.

The Residence



**TOM
SMITH**

ALC®, BROKER

Office: 601.898.2772

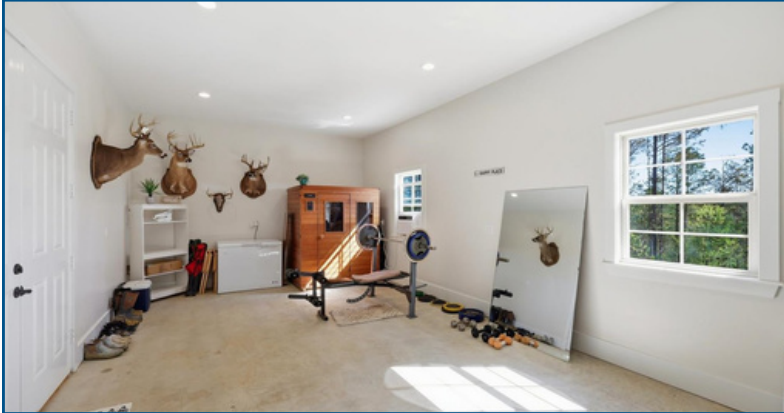
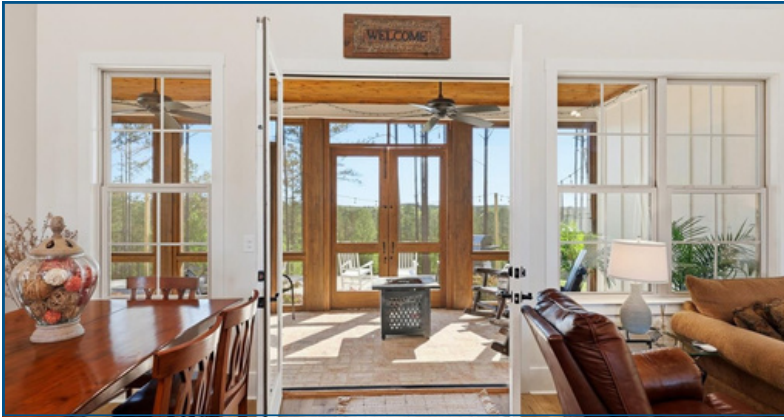
Cell: 601.454.9397

Tom@TomSmithLand.com



Expect More. Get More.

The Residence



**TOM
SMITH**

ALC®, BROKER

Office: 601.898.2772

Cell: 601.454.9397

Tom@TomSmithLand.com



Expect More. Get More.

The Horse Barn



**TOM
SMITH**

ALC®, BROKER

Office: 601.898.2772

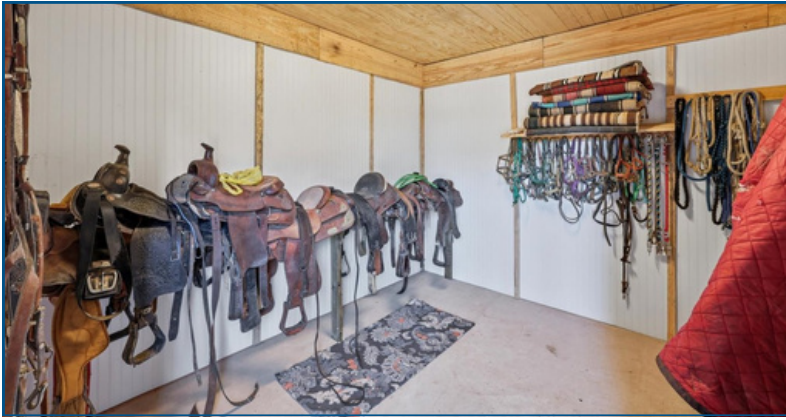
Cell: 601.454.9397

Tom@TomSmithLand.com



Expect More. Get More.

The Horse Barn



**TOM
SMITH**

ALC®, BROKER

Office: 601.898.2772

Cell: 601.454.9397

Tom@TomSmithLand.com


**Tom
Smith
LAND AND
HOMES**

Expect More. Get More.

The Workshop



**TOM
SMITH**

ALC®, BROKER

Office: 601.898.2772

Cell: 601.454.9397

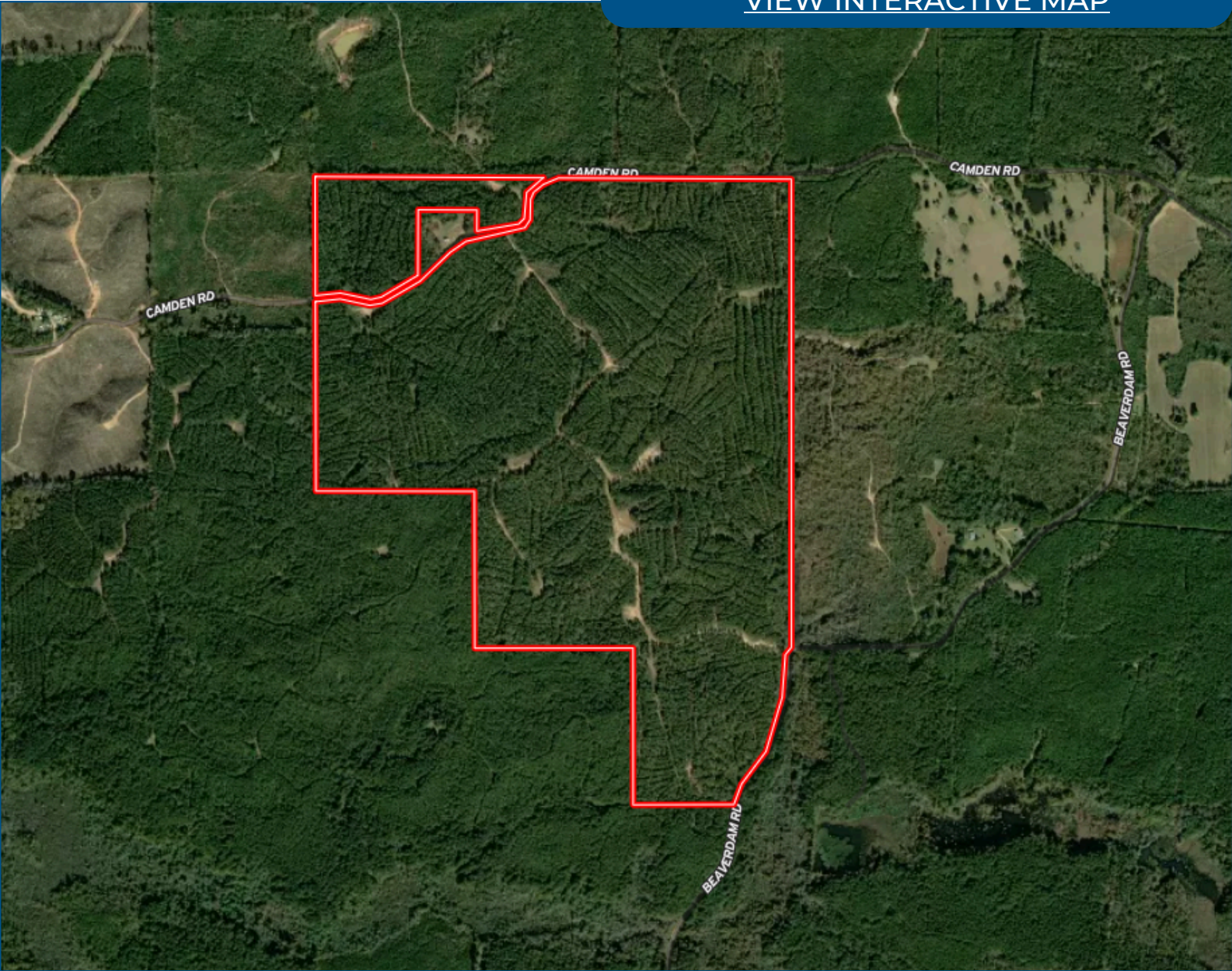
Tom@TomSmithLand.com



Expect More. Get More.

Aerial Map

[VIEW INTERACTIVE MAP](#)



**TOM
SMITH**

ALC®, BROKER

Office: 601.898.2772

Cell: 601.454.9397

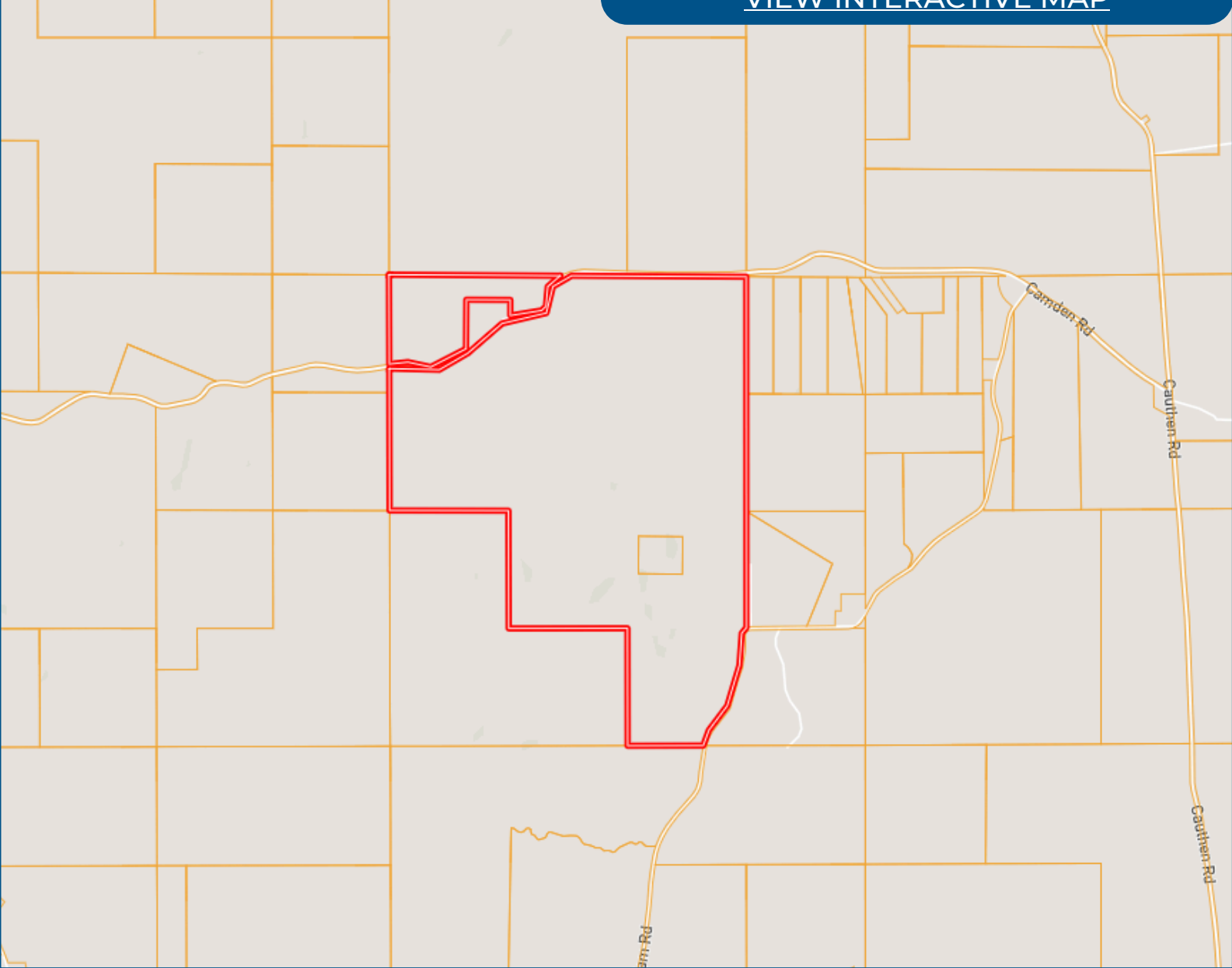
Tom@TomSmithLand.com



Expect More. Get More.

Ownership Map

[VIEW INTERACTIVE MAP](#)



TOM SMITH

ALC®, BROKER

Office: 601.898.2772

Cell: 601.454.9397

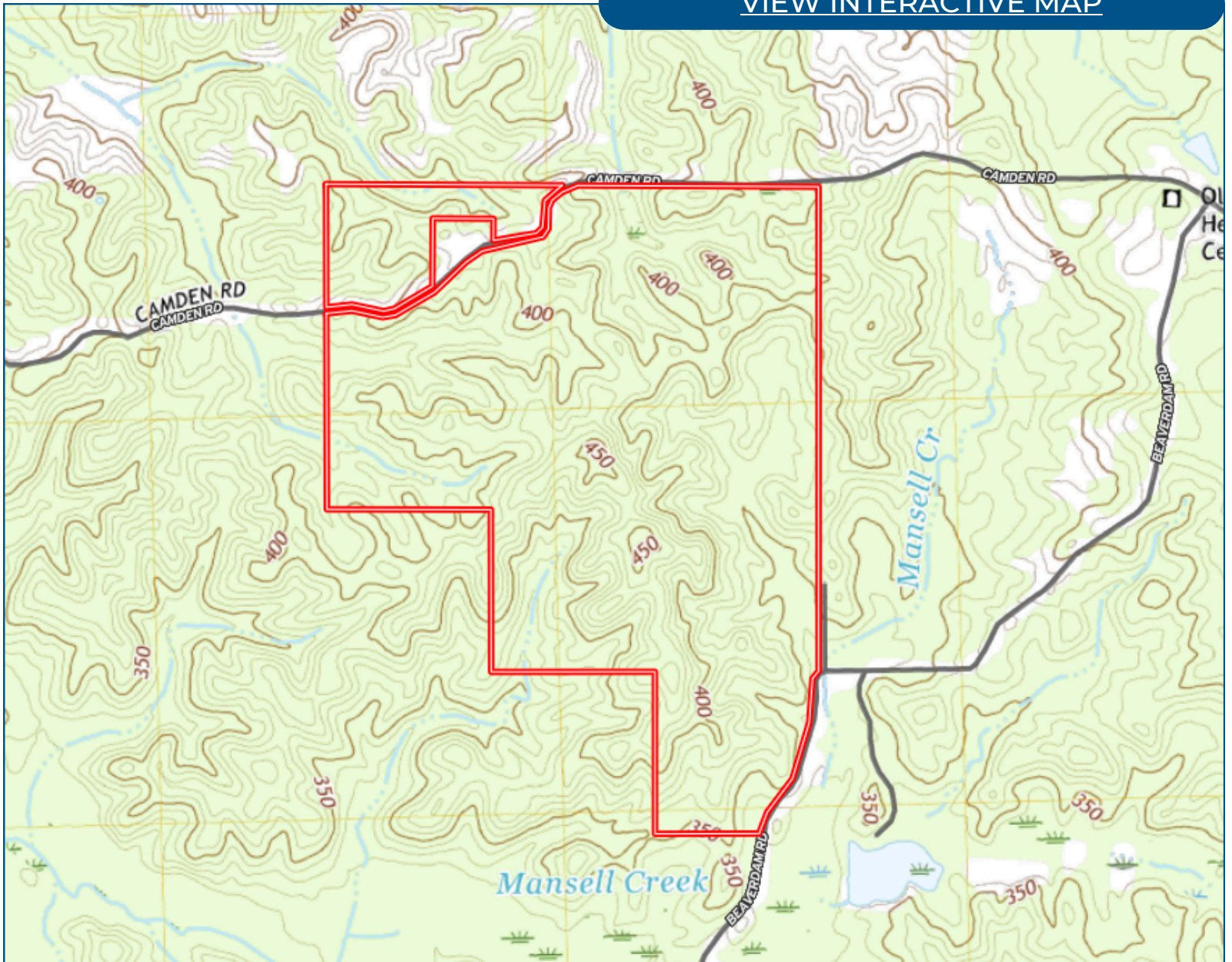
Tom@TomSmithLand.com



Expect More. Get More.

Topo Map

[VIEW INTERACTIVE MAP](#)



**TOM
SMITH**

ALC®, BROKER

Office: 601.898.2772

Cell: 601.454.9397

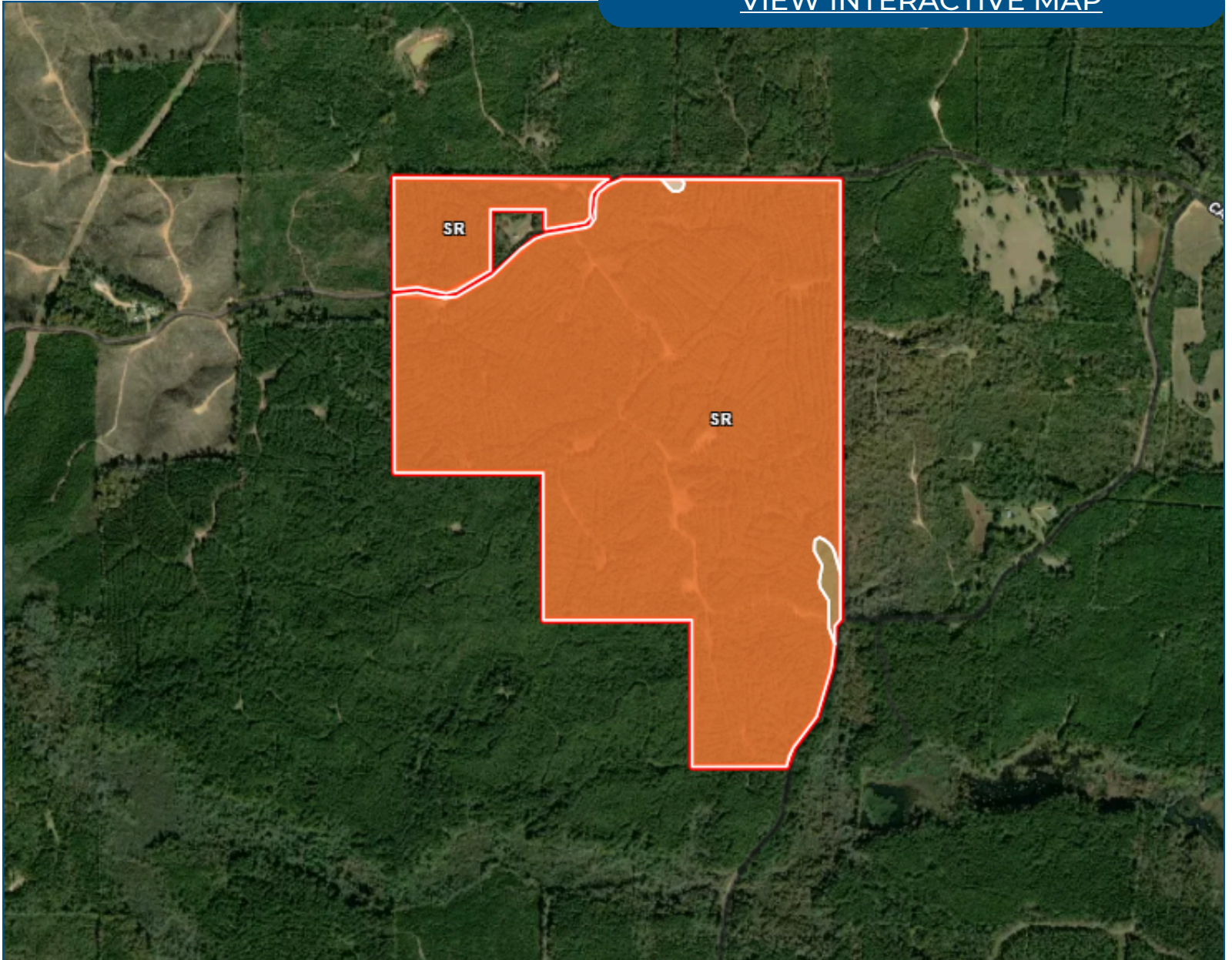
Tom@TomSmithLand.com



Expect More. Get More.

Soil Map

[VIEW INTERACTIVE MAP](#)



**TOM
SMITH**

ALC®, BROKER

Office: 601.898.2772

Cell: 601.454.9397

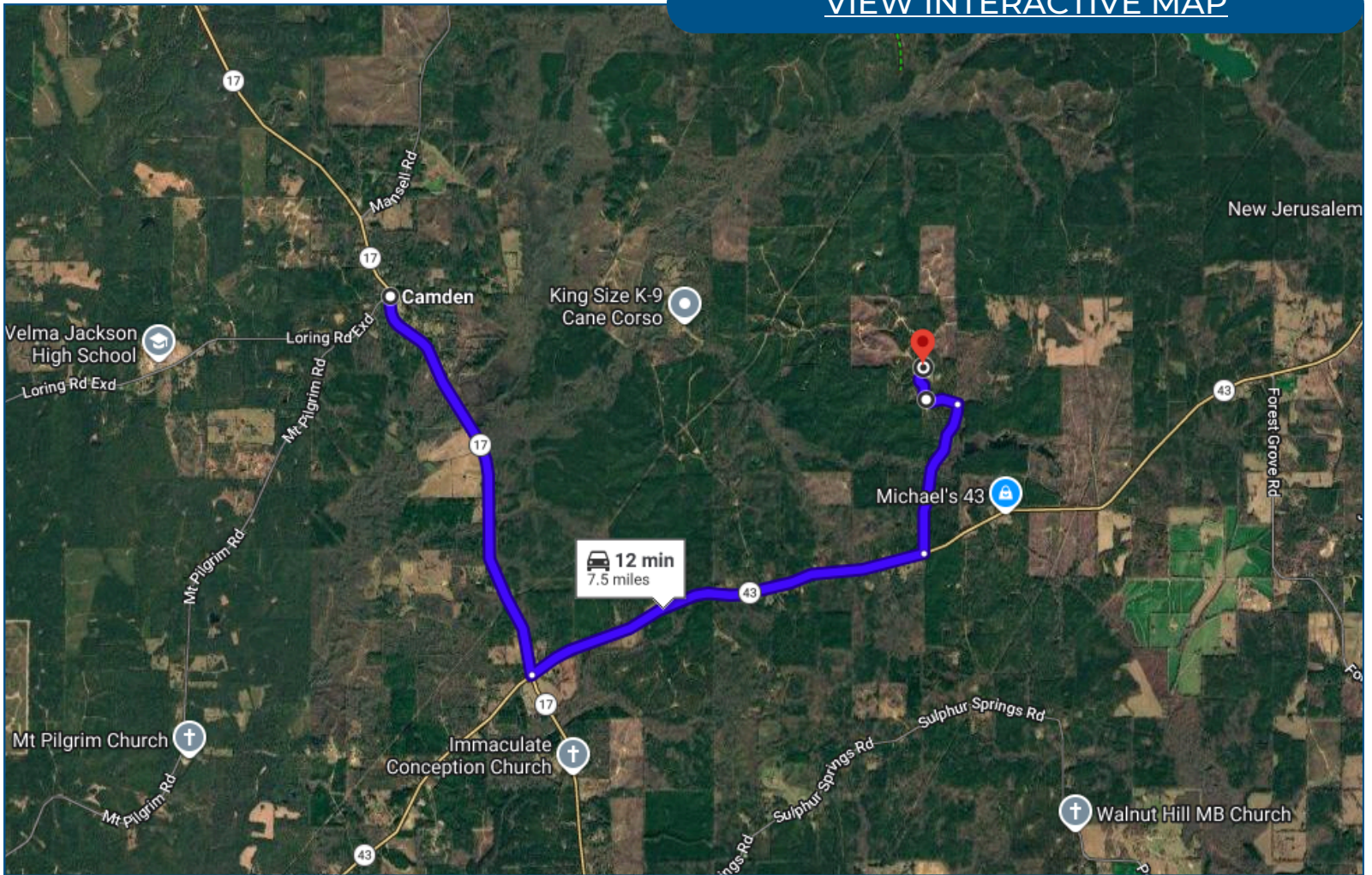
Tom@TomSmithLand.com



Expect More. Get More.

Directional Map

[VIEW INTERACTIVE MAP](#)



Directions from Camden, MS:

Head toward Loring Rd Exd for 3 miles. Turn left onto MS-43 N for 3 miles. Turn left onto Beaverdam Rd in 1.1 miles. Turn left in 0.4 miles. Follow the road all the way to the end and your destination will be straight ahead through the gated entrance.

**TOM
SMITH**
ALC®, BROKER

Office: 601.898.2772

Cell: 601.454.9397

Tom@TomSmithLand.com



Expect More. Get More.

Listing Agent



TOM SMITH

FOUNDER & BROKER, ALC®

24+ Years in Mississippi Land, Ag and Management

Tom Smith is the Principal Broker and founder of Tom Smith Land and Homes, bringing over two decades of real estate expertise and a deep-rooted knowledge of the Mississippi market. A native of Meridian, Mississippi, Tom attended Mississippi State University and launched his real estate career in Madison in 2002.

With a strong background in executive leadership, Tom brings a strategic business mindset to real estate, having previously served in top management roles with major companies such as Wal-Mart and Home Depot, as well as holding CEO positions for retail organizations across the U.S.

Tom is one of the few Realtors in the Southeastern U.S. to hold the prestigious Accredited Land Consultant (ALC) designation from the Realtor Land Institute, which he earned in 2006. He is also a recipient of the APEX Award, recognizing him among the top-performing land brokers in America. His specialties include recreational tracts, timberland investment, commercial properties, and 1031 Tax-Deferred Exchanges.

An avid outdoorsman, Tom enjoys hunting, fishing, boating, and golf in his free time. He and his wife of 29 years, Ellen, make their home in Lake Caroline (Madison), Mississippi, and are proud parents of two daughters—one residing in Lakeland, Tennessee, and the other in Charleston, South Carolina.

OFFICE: 601.898.2772

CELL: 601.454.9397

Tom@TomSmithLand.com

**CALL THE LAND MAN
TODAY!**

