

Aerial Map



©2025 AgriData, Inc.



Boundary Center: 41° 29' 26, -88° 21' 44.7



19-35N-8E
Kendall County
Illinois



Maps Provided By:

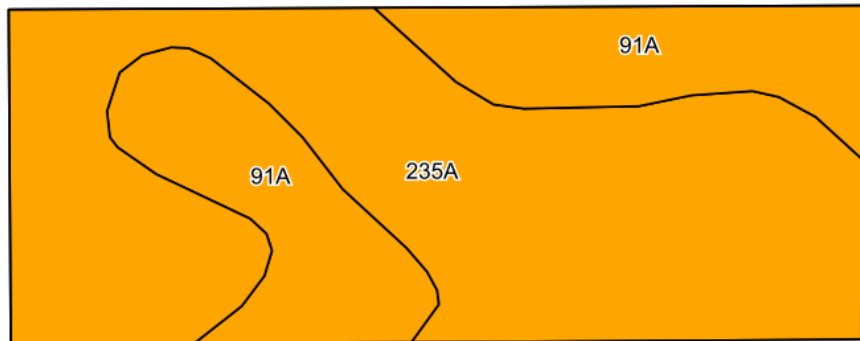
surety
CUSTOMIZED ONLINE MAPPING

© AgriData, Inc. 2023 www.AgriDataInc.com

8/18/2025

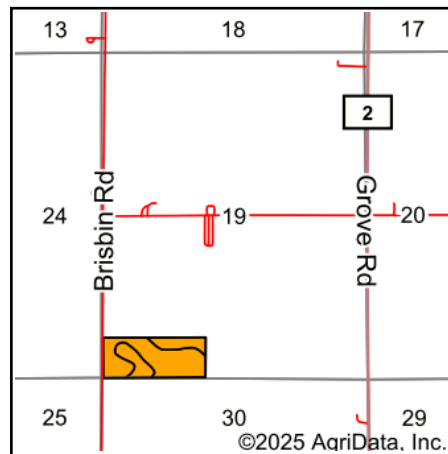
Field borders provided by Farm Service Agency as of 5/21/2008.

Soils Map



©2025 AgriData, Inc.

Soils data provided by USDA and NRCS.



State: **Illinois**
 County: **Kendall**
 Location: **19-35N-8E**
 Township: **Seward**
 Acres: **24.99**
 Date: **8/18/2025**



Maps Provided By:

 CUSTOMIZED ONLINE MAPPING
 © AgriData, Inc. 2023 www.AgriDataInc.com



Area Symbol: IL093, Soil Area Version: 21

Code	Soil Description	Acres	Percent of field	Il. State Productivity Index Legend	Water Table	Restrictive Layer	Soil Drainage	Subsoil rooting a	Corn Bu/A	Soybeans Bu/A	Crop productivity index for optimum management	*n NCCPI Overall	*n NCCPI Corn	*n NCCPI Soybeans
**235A	Bryce silty clay, 0 to 2 percent slopes	17.11	68.5%		0.5ft.	> 6.5ft.	Poorly drained	FAV	**161	**54	**120	55	44	33
**91A	Swygert silty clay loam, 0 to 2 percent slopes	7.88	31.5%		1.5ft.	4.2ft. (Densic material)	Somewhat poorly drained	UNF	**158	**52	**118	63	63	57
Weighted Average									160.1	53.4	119.4	*n 57.5	*n 50	*n 40.6

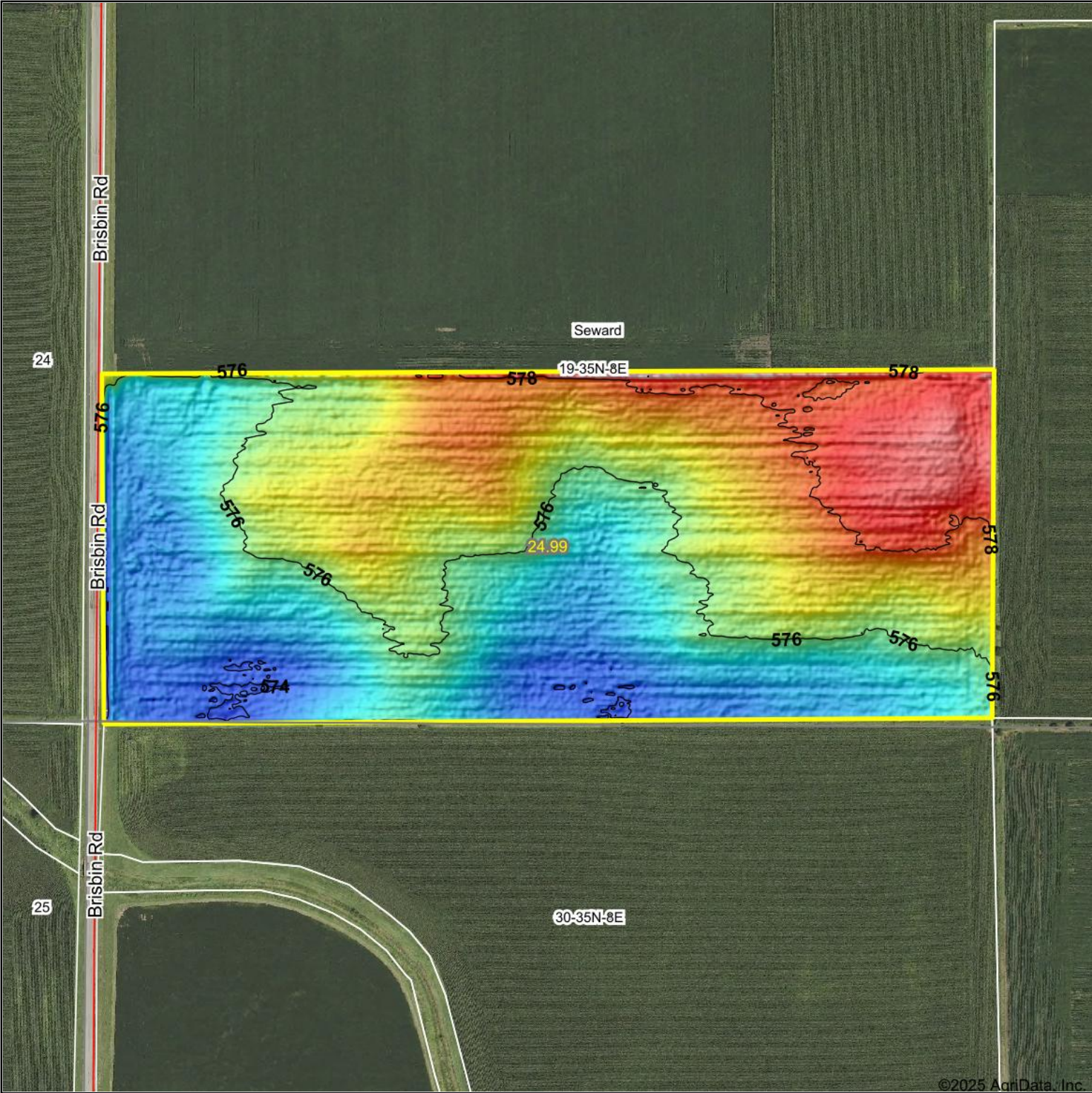
Table: Optimum Crop Productivity Ratings for Illinois Soil EFOTG are sourced from Bulletin 811 calculated Map Unit Base Yield Indices, and adjusted (Adj) for slope, erosion, flooding, and surface texture. Publication Date: 01-28-2025

Crop yields and productivity (B811 EFOTG) are maintained at the following USDA web site: 2023 Illinois Soil Productivity and Yield Indices: <https://efotg.sc.egov.usda.gov/#/state/IL/documents/section=2&folder=52809>

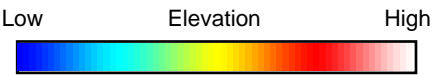
** Base indexes from Bulletin 811 adjusted for slope, erosion, flooding, and surface texture according to the Il. Soils EFOTG

*n: The aggregation method is "Weighted Average using all components"

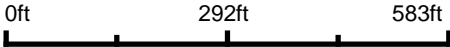
Topography Hillshade



©2025 AgriData, Inc.



Source: USGS 1 meter dem
Interval(ft): 2
Min: 573.7
Max: 579.9
Range: 6.2
Average: 576.2
Standard Deviation: 1.35 ft



19-35N-8E
Kendall County
Illinois

Boundary Center: 41° 29' 26, -88° 21' 44.7

Field borders provided by Farm Service Agency as of 5/21/2008.